

TOGETHER WE

PLAN

NATIONAL CITY

Focused General Plan Update

Webinar Series - August 2020
nationalcityca.gov/FGPU

Escuchar en Español

Llame al **+1 (214) 416-0400**

Código de Conferencia: **9200546**



Agenda

1. Introductions and Webinar Housekeeping
2. Project Overview
3. Housing and Land Use Elements
4. Transportation Element
5. Safety Element
6. Climate Action Plan
7. Wrap-Up



+



TARA LAKE
PROJECT MANAGER
Land Use/Housing
WSP



SETH TORMA
Transportation Planning
WSP



STEPHANIE WHITMORE
Environmental Planning
WSP



RYAN WHIPPLE
Transportation Planning
Webinar Q&A Moderator
National City Resident
WSP



+

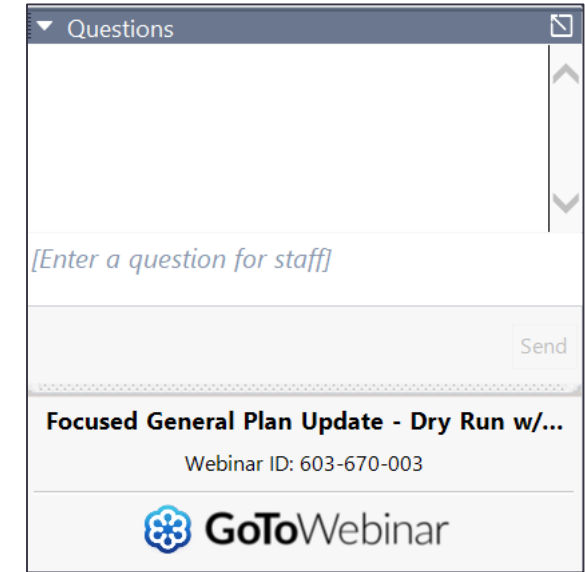


NATIONAL CITY STAFF

- Carlos Aguirre, Director of the National City Housing Authority
- Martin Reeder, Principal Planner
- Ray Pe, Principal Planner
- Angelita Palma, Community Development Manager
- Myra Martinez, Housing Authority Intern
- Roberto Yano, City Engineer
- Jose Lopez, Deputy City Engineer

Webinar Housekeeping

Ask questions! Submit written questions using the Q&A feature



- Want to talk more? Call during Office Hours. Dates and times are listed on the project page (link below) and closing slides.
- Polling – let us know what you think!
- Meeting presentation and summaries to be posted online at the project page:
nationalcityca.gov/FGPU



Listen in Spanish! Escuchar en Español

Llame al **+1 (214) 416-0400**
Código de Conferencia: **9200546**

Call **+1 (214) 416-0400**
Conference Code: **9200546**



**More opportunities!
Más oportunidades**

Seminario Web en Español

— Miércoles 9 de septiembre desde 6-7:30pm

Horario de oficina en Español

— Jueves 10 de septiembre desde 5-6pm. Llame al (619) 336-4301.

Encuesta (en Español)

— nationalcityca.gov/FGPU

Spanish Webinar

— Wednesday, September 9 from 6-7:30pm

Office Hours in Spanish

— Thursday, September 10 from 5-6pm. Call (619) 336-4301.

Survey (in Spanish)

— nationalcityca.gov/FGPU

ESCUCHAR EN ESPAÑOL – LISTEN IN SPANISH!
LLAME AL +1 (214) 416-0400 | CÓDIGO DE CONFERENCIA 9200546
CALL +1 (214) 416-0400 | CONFERENCE CODE 9200546

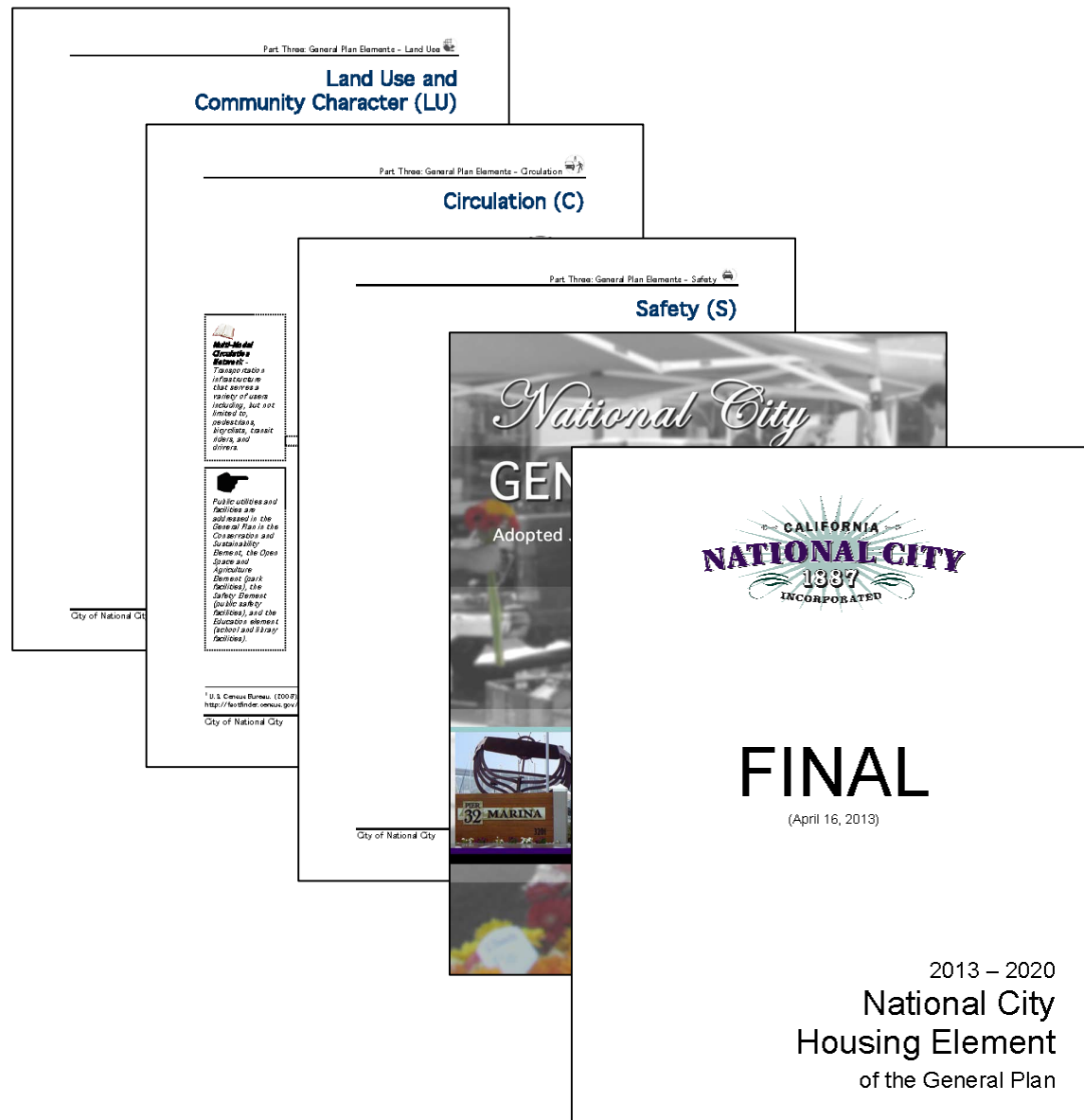
An aerial photograph of a city street, likely in Los Angeles, showing a mix of residential and commercial buildings, palm trees, and a clear view of mountains in the distance. A semi-transparent white rectangular overlay is centered horizontally across the middle of the image, containing the text 'PROJECT OVERVIEW' in a bold, black, sans-serif font. The text is positioned over a street intersection and a large building. The background shows a dense urban area with various building styles, including multi-story apartment complexes and smaller houses, interspersed with greenery and palm trees. The sky is overcast with grey clouds.

PROJECT OVERVIEW



Focused General Plan Update

- Citywide “blueprint” document last updated in 2011
- Need to address new state legislation related to housing, land use, transportation, safety, and climate change
- Reflect local planning efforts
- Address changing regional context and forecasted future growth



ESCUCHAR EN ESPAÑOL – LISTEN IN SPANISH!
LLAME AL +1 (214) 416-0400 | CÓDIGO DE CONFERENCIA 9200546
CALL +1 (214) 416-0400 | CONFERENCE CODE 9200546

Scope of the Focused General Plan Update

- Focused Policy Updates
- Supporting Updates to Codes, Ordinances, and Development Standards
- Environmental Review

Policies

- Housing Element
- Land Use Element
- Transportation Element
- Safety Element
- Climate Action Plan

Codes, Ordinances, & Development Standards

- Zoning Code
- Specific Plans
- Objective Design Standards

Environmental Review

- Supplemental Program Environmental Impact Report (PEIR)



Timeline

Critical Path:

- Preferred Land Use and Mobility Network (Fall 2020)
- Environmental Review (Winter 2021)
- Housing Element Submittal to HCD (Spring/Summer 2021)

<p>Spring 2020 Existing Conditions Analysis</p>
<p>Summer 2020 Outreach Vision, Goals, and Policies Land Use Scenarios</p>
<p>Fall 2020 Preferred Land Use and Mobility Network Zoning Code Updates Outreach Draft Elements</p>
<p>Winter 2021 Environmental Review Technical Studies</p>
<p>Spring/Summer 2021 Public Review/Adoption Housing Element Submittal to HCD</p>



Help Shape Your Community!

- Survey
- Webinars
- Office Hours
- Social Media and Website
- Stakeholder Interviews

nationalcityca.gov/FGPU

#TogetherWePlan

#NationalCity

City of National City
1243 National City Blvd
National City, CA 91950

PRSRT STD
ECRWSS
U.S. POSTAGE
PAID
PERMIT #2686
SAN DIEGO, CA

*****ECRWSSDDM*****
Postal Customer

**FOCUSED GENERAL
PLAN UPDATE**

ACTUALIZACIÓN DEL PLAN GENERAL ENFOCADO

.....

HELP SHAPE YOUR COMMUNITY!
¡AYUDA A DAR FORMA A TU COMUNIDAD!

ESCUCHAR EN ESPAÑOL – LISTEN IN SPANISH!
 LLAME AL +1 (214) 416-0400 | CÓDIGO DE CONFERENCIA 9200546
 CALL +1 (214) 416-0400 | CONFERENCE CODE 9200546



Survey

Generated on the MetroQuest Platform (both English and Spanish available):

- Welcome Screen
- Housing Budget
- Mobility Markers
- Rate Housing Types
- Wrap Up

Visit project page for survey:

www.nationalcityca.gov/FGPU

National City Focused General Plan Update



Welcome

National City Focused General Plan Update

Be a part of the process to update National City's General Plan, the City's "blueprint" document that guides future growth and investments. Share your voice and vision for the future!

Planning Area

Begin

WELCOME

HOUSING BUDGET

MOBILITY MARKERS

RATE HOUSING TYPES

WRAP UP

Since 2011, new laws have passed and the City will need to update the housing, land use, transportation, and safety elements of the General Plan.

TOGETHER WE
PLAN
NATIONAL CITY

ESCUCHAR EN ESPAÑOL – LISTEN IN SPANISH!
LLAME AL +1 (214) 416-0400 | CÓDIGO DE CONFERENCIA 9200546
CALL +1 (214) 416-0400 | CONFERENCE CODE 9200546



Polling Question #1:

What topic area being addressed through the Focused General Plan Update is most important to you?

Select one:

- Land Use
- Housing
- Transportation
- Safety
- Climate Change



LAND USE & HOUSING ELEMENTS

TOGETHER WE

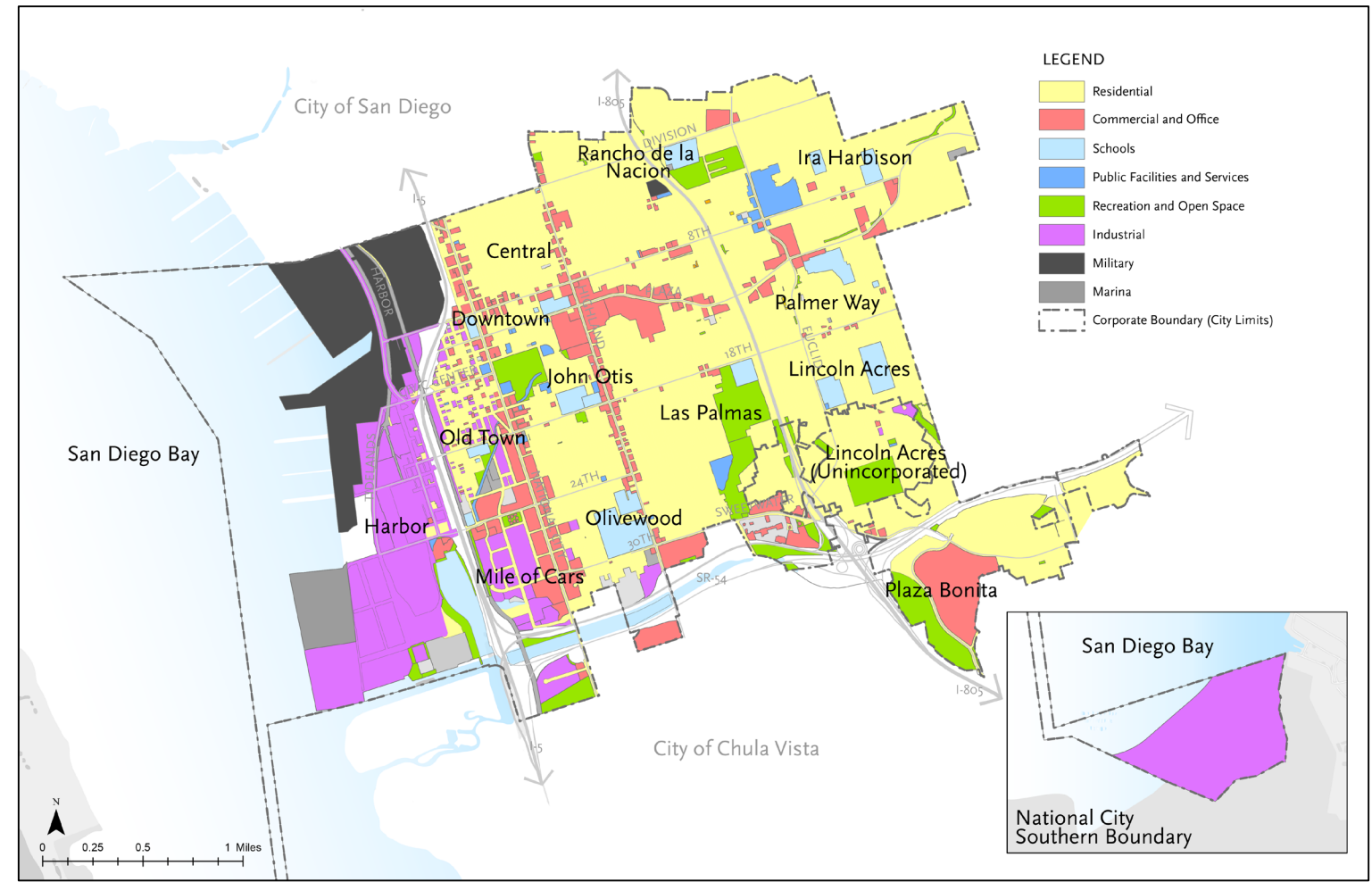
PLAN

NATIONAL CITY

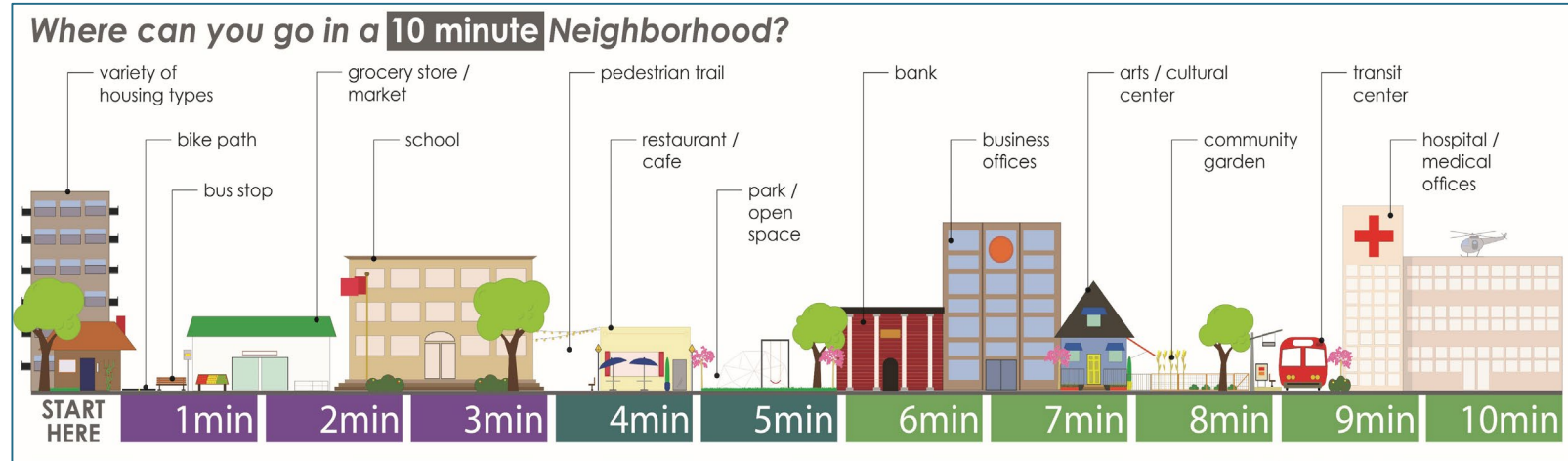
What is a Land Use Element?

Designates the general distribution, location, and extent of uses of land for housing, business, industry, open space, etc.

Existing Land Uses



10-Minute Neighborhoods



10-minute neighborhoods
 Source: INTRACONnect (2020)



What is a Housing Element?

Contains policies and programs to address housing for all income levels. Requirements set by State law.

National City Growth Forecast

2020

Population: 62,342

Housing Units: 17,458

2035

Population: 73,329

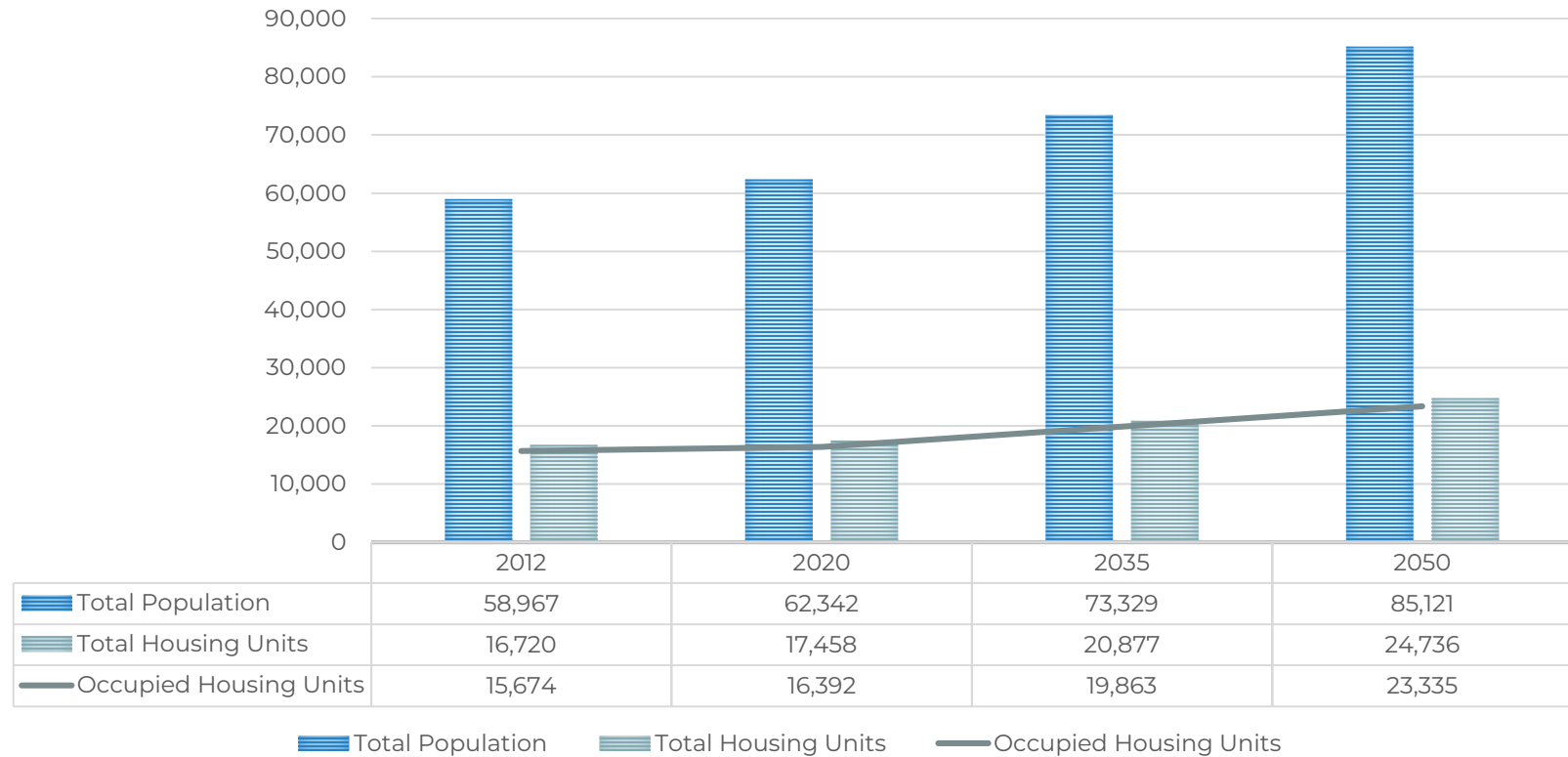
Housing Units: 20,877

2050

Population: 85,121

Housing Units: 24,736

NATIONAL CITY GROWTH FORECAST



Source: Series 13 Regional Growth Forecast. SANDAG.

ESCUCHAR EN ESPAÑOL – LISTEN IN SPANISH!
 LLAME AL +1 (214) 416-0400 | CÓDIGO DE CONFERENCIA 9200546
 CALL +1 (214) 416-0400 | CONFERENCE CODE 9200546



6th Cycle Regional Housing Needs Assessment (RHNA)

- Planning Period: 2021-2029
- San Diego region’s target: 171,685 units
- National City’s target: 5,437 units

NATIONAL CITY DRAFT 6TH CYCLE RHNA ALLOCATION

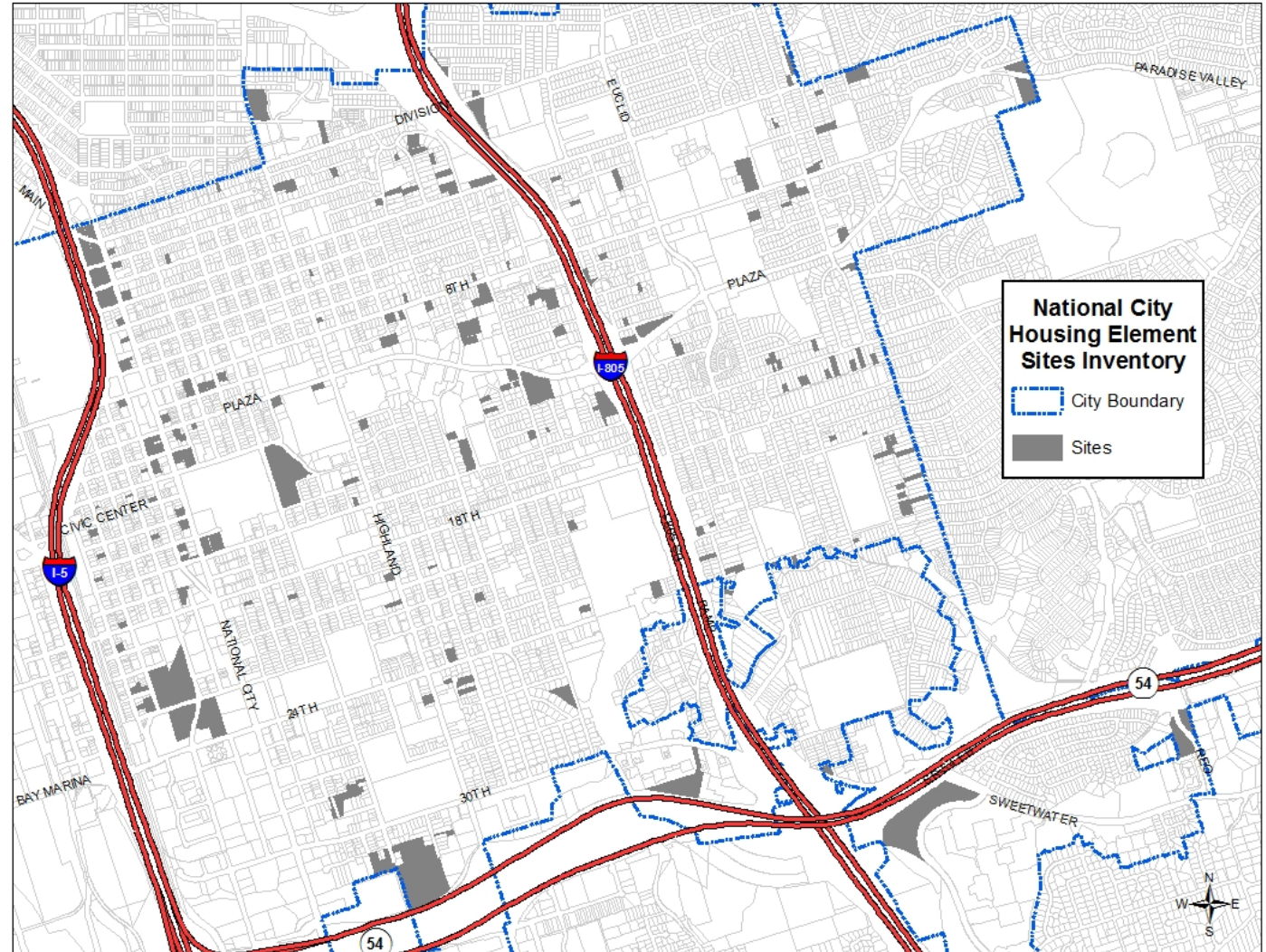
Income Group	Percentage of AMI	Share
Very Low Income	31-50	645
Low Income	51-80	506
Moderate Income	81-120	711
Above Moderate Income	>120	3,575
Total		5,437

Source: 6th Cycle Draft RHNA Allocation. SANDAG.

6th Cycle Regional Housing Needs Assessment (RHNA)

Site Inventory being compiled according to state guidelines:

- Vacant sites
- City-owned sites
- Downtown Specific Plan
- Mixed-use districts and corridors
- Multi-family zoned areas



Prior Site Inventory (Cycle 5)

ESCUCHAR EN ESPAÑOL – LISTEN IN SPANISH!
LLAME AL +1 (214) 416-0400 | CÓDIGO DE CONFERENCIA 9200546
CALL +1 (214) 416-0400 | CONFERENCE CODE 9200546

TOGETHER WE

PLAN

NATIONAL CITY

Goals and Policies

- Goal 1: Maintain and enhance the quality of existing residential neighborhoods.
- Goal 2: Conserve the affordability of the existing housing stock.

SLIDE 23



ESCUCHAR EN ESPAÑOL – LISTEN IN SPANISH!
LLAME AL +1 (214) 416-0400 | CÓDIGO DE CONFERENCIA 9200546
CALL +1 (214) 416-0400 | CONFERENCE CODE 9200546

TOGETHER WE

PLAN

NATIONAL CITY

Goals and Policies

- Goal 3: Increase the availability and affordability of safe and sanitary housing for all income groups
- Goal 4: Provide a sufficient number of housing units and range of housing types

SLIDE 24



ESCUCHAR EN ESPAÑOL – LISTEN IN SPANISH!
LLAME AL +1 (214) 416-0400 | CÓDIGO DE CONFERENCIA 9200546
CALL +1 (214) 416-0400 | CONFERENCE CODE 9200546

TOGETHER WE

PLAN

NATIONAL CITY

Goals and Policies

- Goal 5: Promote and implement fair housing practices and equal access to housing opportunities
- Goal 6: Enhance housing affordability through energy conservation and design

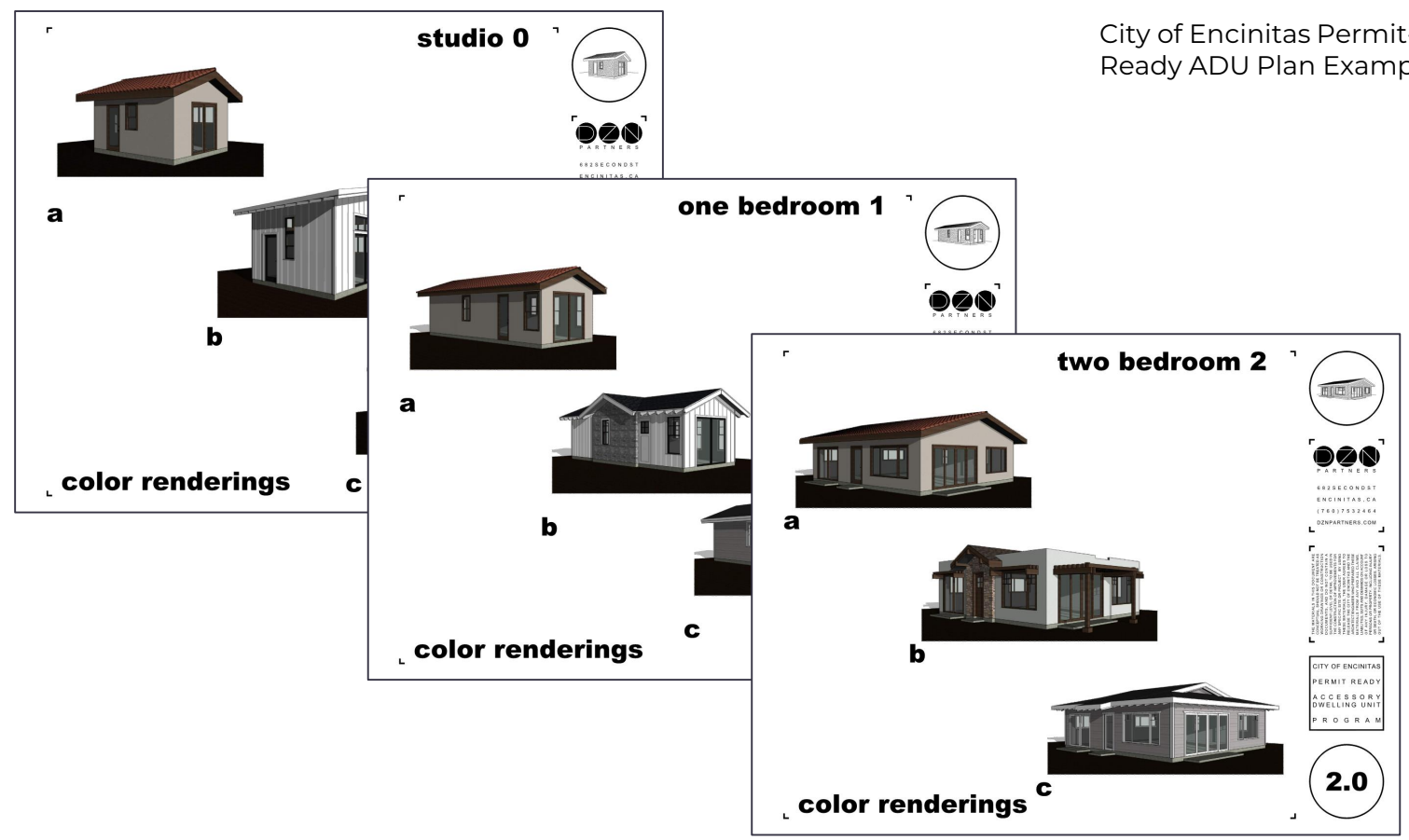
SLIDE 25



ESCUCHAR EN ESPAÑOL – LISTEN IN SPANISH!
LLAME AL +1 (214) 416-0400 | CÓDIGO DE CONFERENCIA 9200546
CALL +1 (214) 416-0400 | CONFERENCE CODE 9200546

Strategy: Increase Housing Production

— Adopt an **Accessory Dwelling Unit Ordinance**



ACCESSORY DWELLING UNITS

Adopt an ordinance with ADU standards

Provide permit-ready, customizable plans

Example: City of Encinitas Permit-Ready ADU (PRADU) Program

TOGETHER WE

PLAN

NATIONAL CITY

Strategy: Increase Housing Production

— Adopt an **inclusionary housing ordinance**



City of San Diego COMM22

INCLUSIONARY HOUSING ORDINANCE

Adopt an ordinance that requires a certain percentage of new development to be set aside as affordable units or pay an in-lieu fee

Must strike a balance with market conditions to be effective

Example: City of San Diego Inclusionary Housing Ordinance

ESCUCHAR EN ESPAÑOL – LISTEN IN SPANISH!

LLAME AL +1 (214) 416-0400 | CÓDIGO DE CONFERENCIA 9200546

CALL +1 (214) 416-0400 | CONFERENCE CODE 9200546

TOGETHER WE

PLAN

NATIONAL CITY

Strategy: Increase Housing Production

- Provide **incentives** to supplement the State Density Bonus program

SLIDE 28



City of San Diego NOOK Micro-units

INCENTIVES

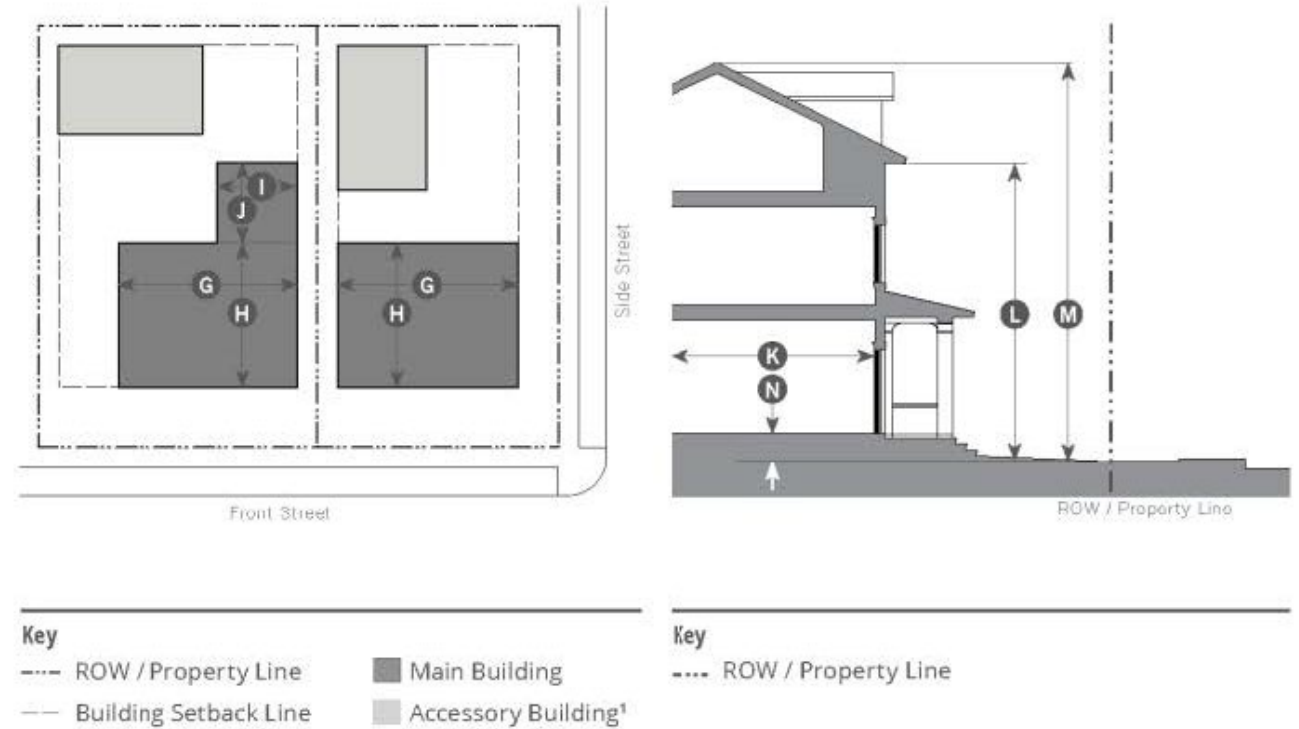
Additional density and/or height for certain types of development (microunits, proximity to transit, etc.)

Example: City of San Diego Housing SD Program

ESCUCHAR EN ESPAÑOL – LISTEN IN SPANISH!
LLAME AL +1 (214) 416-0400 | CÓDIGO DE CONFERENCIA 9200546
CALL +1 (214) 416-0400 | CONFERENCE CODE 9200546

Strategy: Reduce Development Costs

— Develop **Objective Design Standards**



OBJECTIVE DESIGN STANDARDS

Design standards that involve no personal or subjective judgement and is uniformly verifiable by benchmarks and criteria

Can include site elements (massing and articulation, parking locations, etc.) and building design (roof design, building details, etc.)

Example: City of Novato (pictured above)

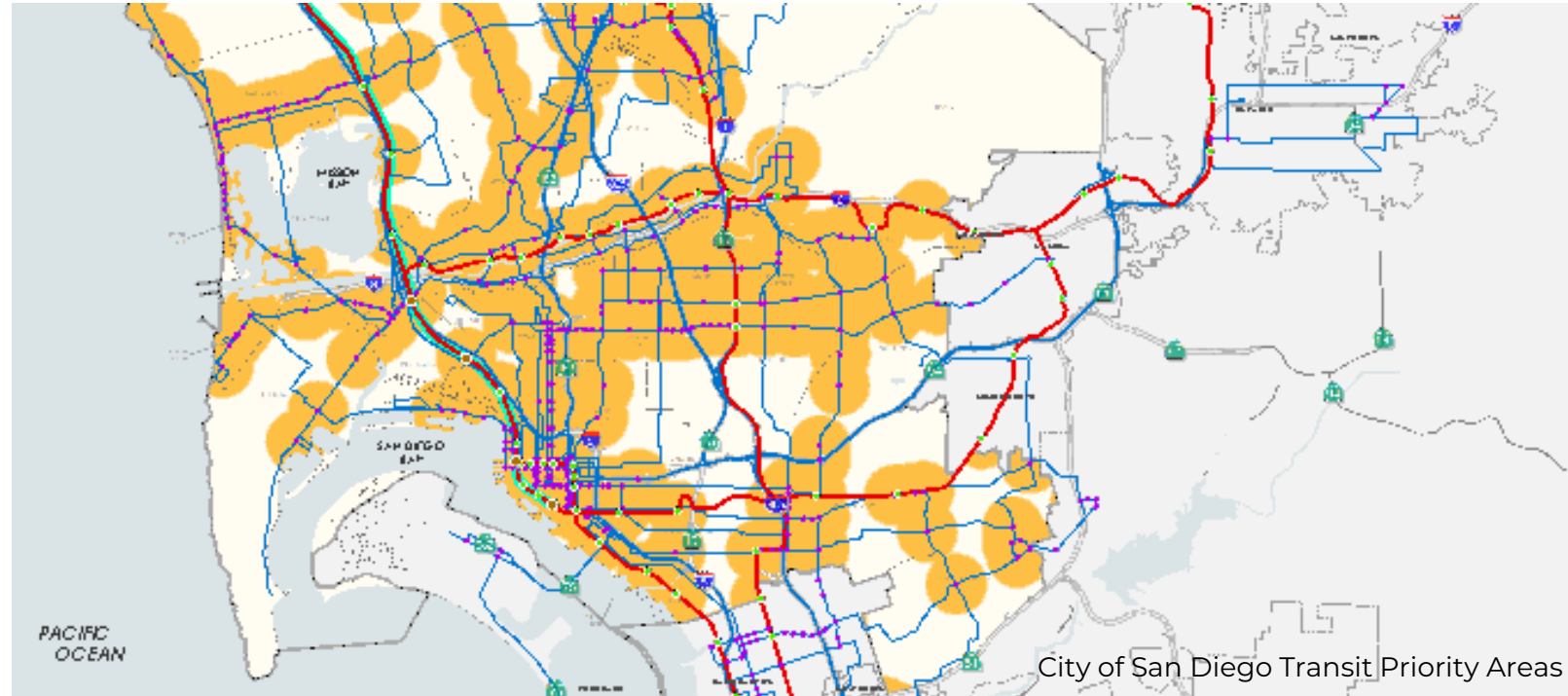
ESCUCHAR EN ESPAÑOL – LISTEN IN SPANISH!

LLAME AL +1 (214) 416-0400 | CÓDIGO DE CONFERENCIA 9200546

CALL +1 (214) 416-0400 | CONFERENCE CODE 9200546

Strategy: Reduce Development Costs

— Reduce **parking requirements**



REDUCE PARKING REQUIREMENTS

Parking requirements increase the amount of land needed per unit and, consequentially, building cost

Revise parking requirements to provide more flexibility; consider reducing based on proximity to transit and other factors

Example: City of San Diego Transit Priority Area Multifamily Residential Parking Standards

TOGETHER WE

PLAN

NATIONAL CITY

Strategy: Reduce Development Costs

— Streamline **entitlement processes**



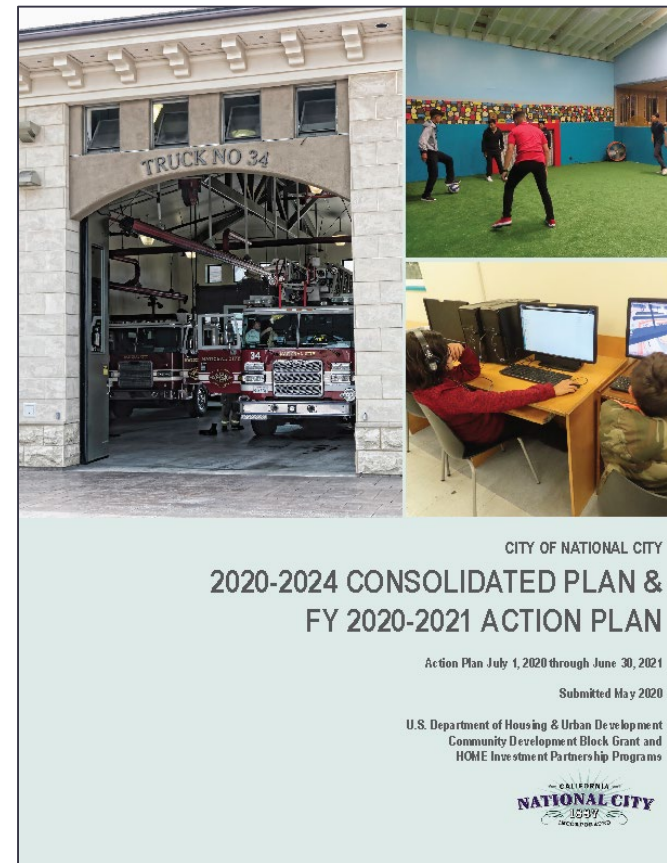
STREAMLINED ENTITLEMENT PROCESSES

Streamlined review and ministerial approval for multifamily projects that meet certain criteria

Example: City of Santa Rosa Streamlined Eligibility Checklist

Strategy: Support Homeowners and Renters

— Continue programs that provide **support for homeowners and renters**



PROGRAMS

Tenant-Based Rental Assistance (TBRA)

Down Payment Assistance

Landlord-Tenant Counseling Programs

Housing Rehabilitation and Repair (Prior Program)

ESCUCHAR EN ESPAÑOL – LISTEN IN SPANISH!
LLAME AL +1 (214) 416-0400 | CÓDIGO DE CONFERENCIA 9200546
CALL +1 (214) 416-0400 | CONFERENCE CODE 9200546

TOGETHER WE

PLAN

NATIONAL CITY

Polling Questions



Polling Question #2:

To accommodate the City's housing need, where would you prioritize housing production?

Choose all that apply:

- Downtown National City
- Westside/Old Town National City
- Commercial Corridors (Highland Ave, Plaza Blvd, 8th Street, and 18th Street)
- Other Neighborhoods

Polling Question #3:

To accommodate the City's housing need, what type of units would you like to see produced?

Choose all that apply:

- Accessory Dwelling Units (ADUs)
- Low-medium density (multifamily up to 3 stories)
- Medium density (multifamily up to 6 stories)
- Medium-high density (multifamily up to 9 stories)
- High density (multifamily up to 20 stories)

TOGETHER WE

PLAN

NATIONAL CITY

Questions & Answers





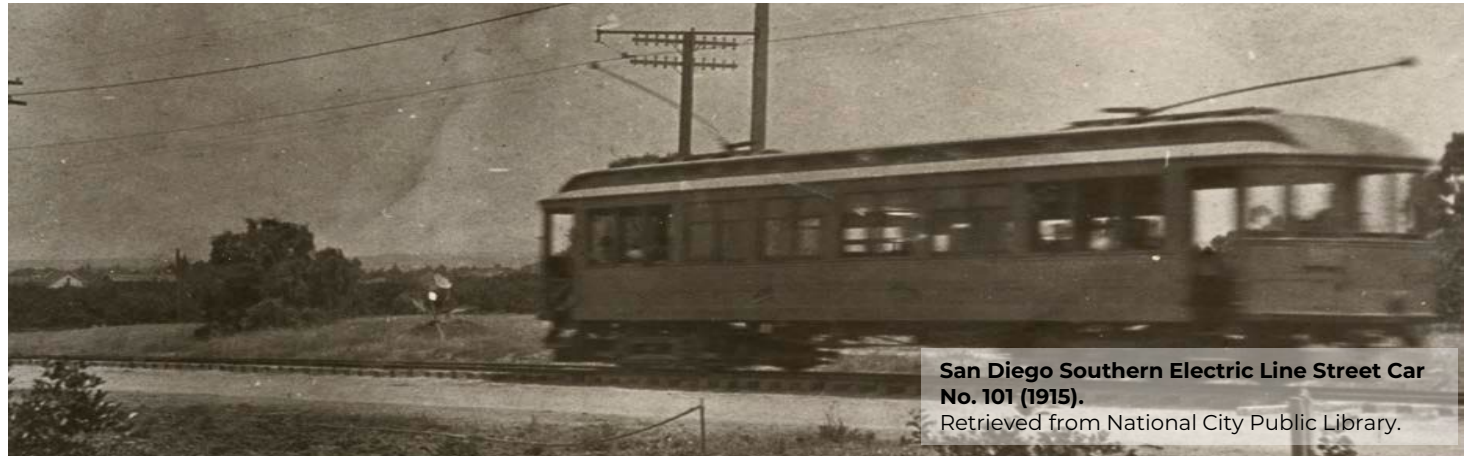
TRANSPORTATION ELEMENT

TOGETHER WE

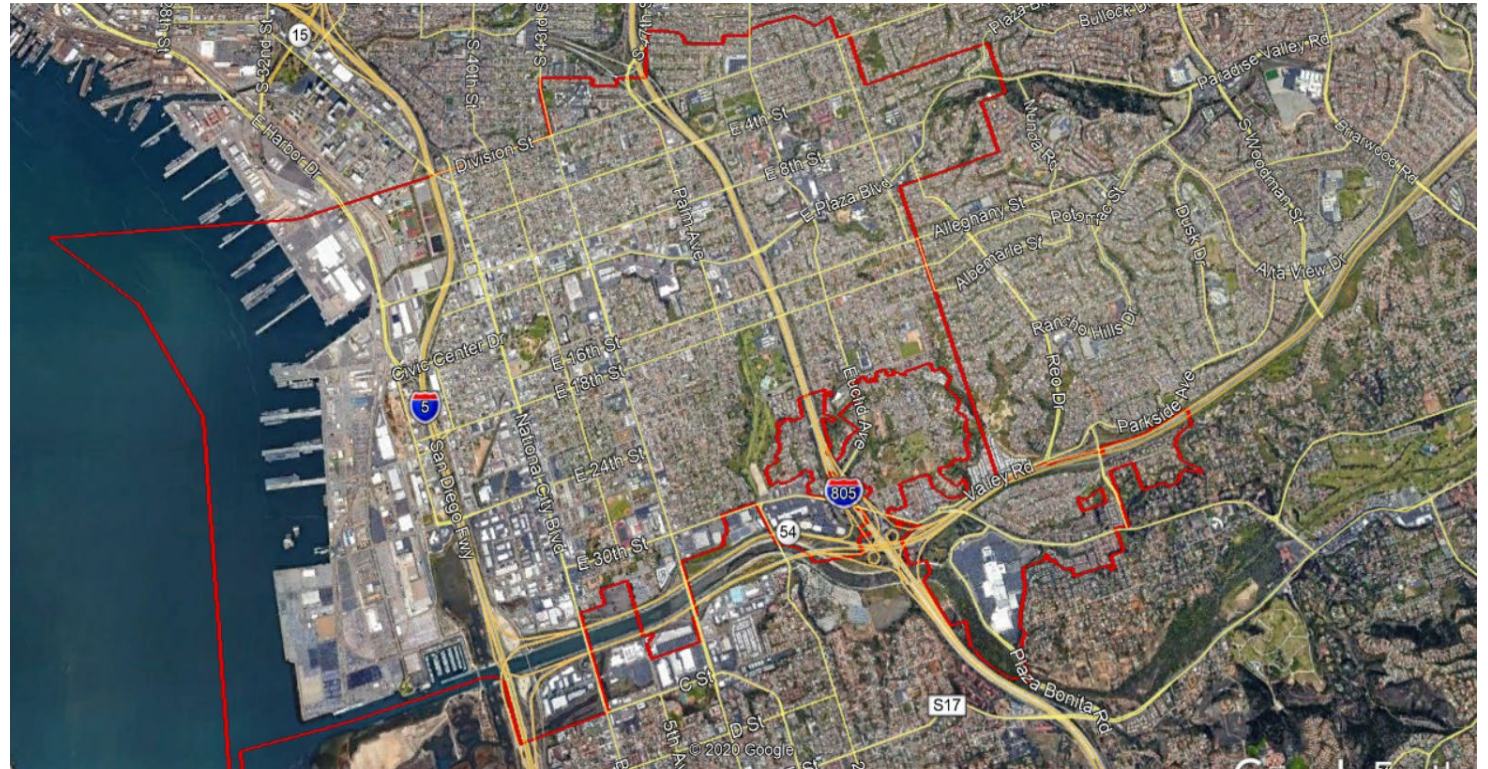
PLAN

NATIONAL CITY

National City's Transportation History



San Diego Southern Electric Line Street Car No. 101 (1915).
Retrieved from National City Public Library.



ESCUCHAR EN ESPAÑOL – LISTEN IN SPANISH!
LLAME AL +1 (214) 416-0400 | CÓDIGO DE CONFERENCIA 9200546
CALL +1 (214) 416-0400 | CONFERENCE CODE 9200546



What is a Transportation Element?

*The blueprint document
that guides the City's
decision making
related to transportation
for the future.*

TOGETHER WE

PLAN

NATIONAL CITY

What is in a Transportation Element?

- Pedestrians
- Bicyclists
- Public Transit
- Vehicles
- Goods Movement
- New Mobility
- TDM / TSM

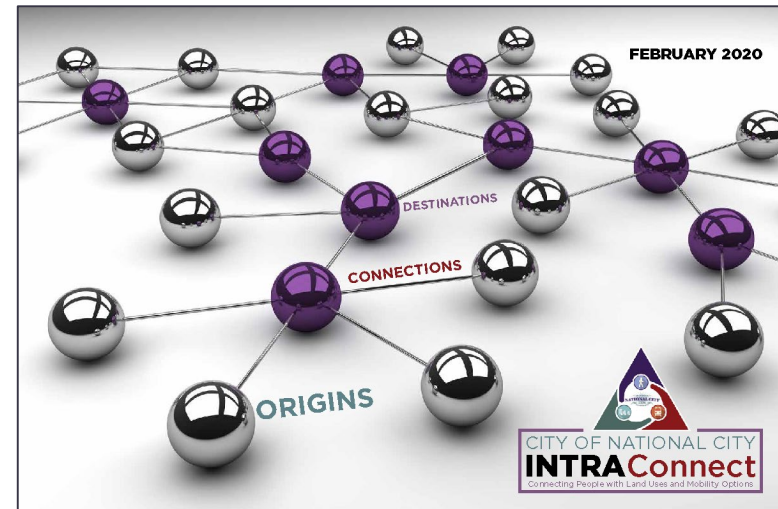
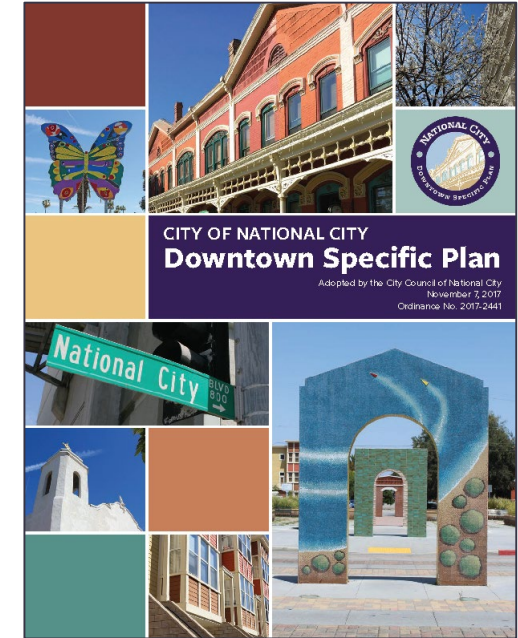
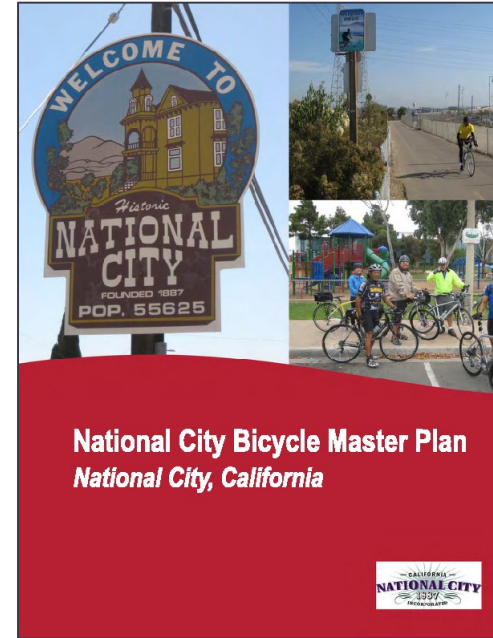
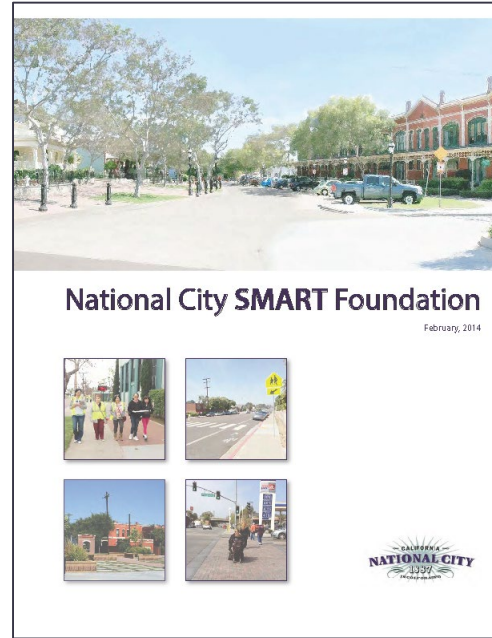


ESCUCHAR EN ESPAÑOL – LISTEN IN SPANISH!
LLAME AL +1 (214) 416-0400 | CÓDIGO DE CONFERENCIA 9200546
CALL +1 (214) 416-0400 | CONFERENCE CODE 9200546

Building from Previous City Efforts

Focused studies and plans since the last General Plan update in 2011:

- SMART Foundation Plan (2014)
- Downtown Specific Plan (2017)
- INTRACONnect (2020)
- Homefront to Waterfront Connectivity Study (2020)
- Bicycle Master Plan
- ADA Master Plan



ESCUCHAR EN ESPAÑOL – LISTEN IN SPANISH!
LLAME AL +1 (214) 416-0400 | CÓDIGO DE CONFERENCIA 9200546
CALL +1 (214) 416-0400 | CONFERENCE CODE 9200546

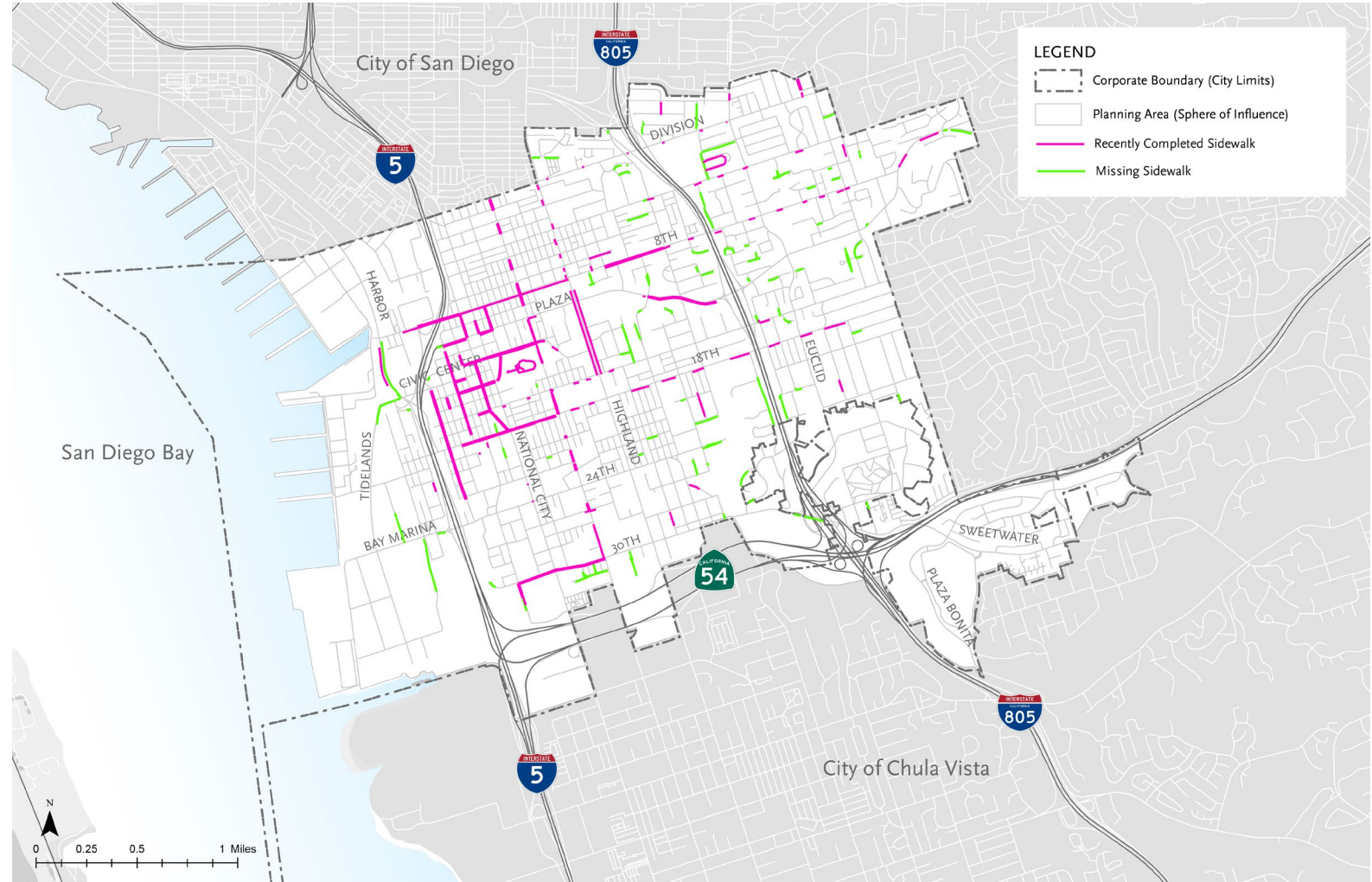
TOGETHER WE

PLAN

NATIONAL CITY

Existing Conditions: Pedestrian Environment

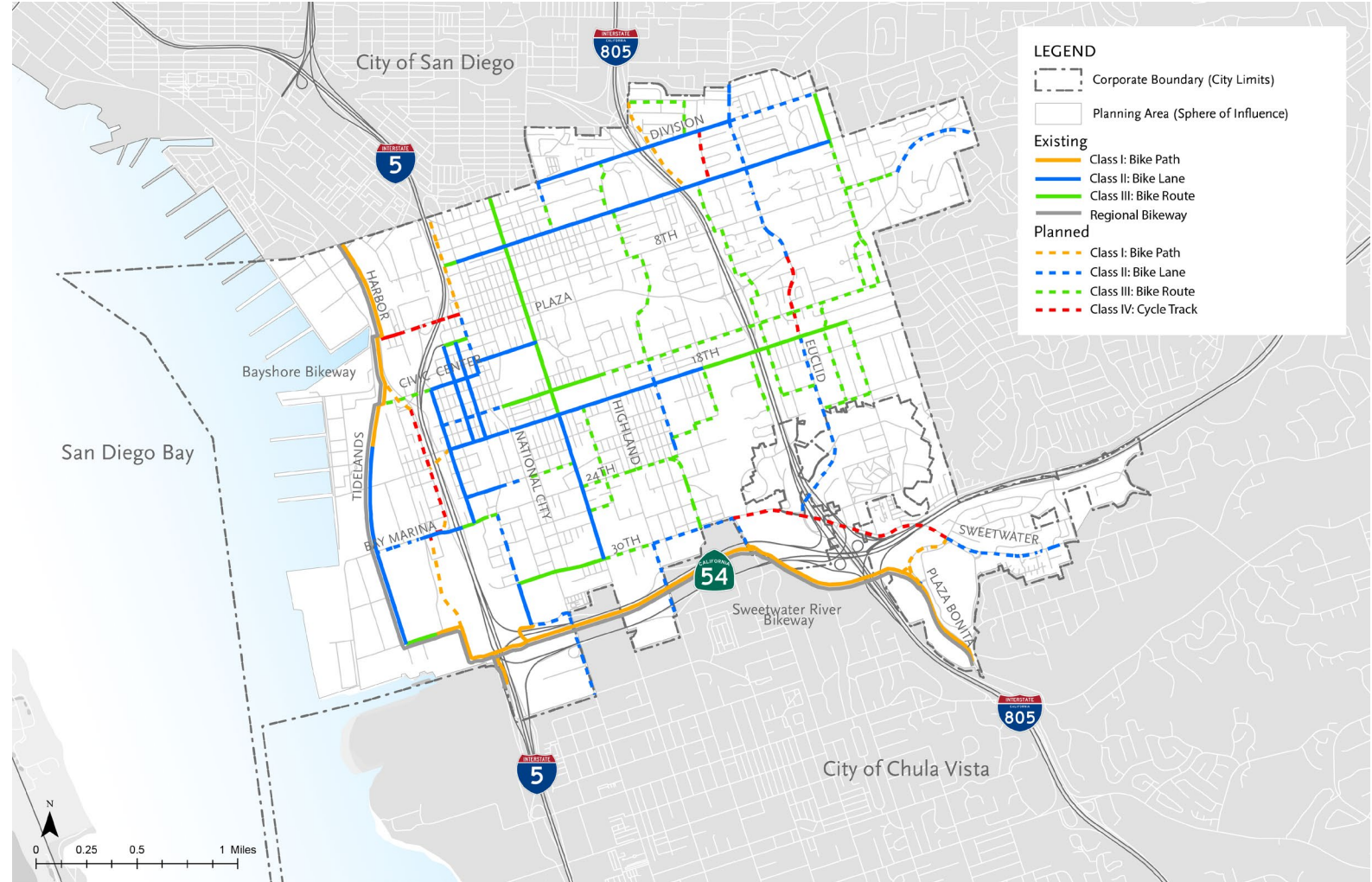
*Missing and Recently
Completed Sidewalks*



ESCUCHAR EN ESPAÑOL – LISTEN IN SPANISH!
LLAME AL +1 (214) 416-0400 | CÓDIGO DE CONFERENCIA 9200546
CALL +1 (214) 416-0400 | CONFERENCE CODE 9200546

Existing Conditions: Bicycle Environment

Existing and Planned Bicycle Facilities



ESCUCHAR EN ESPAÑOL – LISTEN IN SPANISH!
LLAME AL +1 (214) 416-0400 | CÓDIGO DE CONFERENCIA 9200546
CALL +1 (214) 416-0400 | CONFERENCE CODE 9200546



What drives the Transportation Element?

Safety and Reliability

Economic Development

**Accessible Neighborhoods
(10-Minute Destinations)**

Ready for Future Technology

TOGETHER WE

PLAN

NATIONAL CITY

Safety and Reliability

SLIDE 45



ESCUCHAR EN ESPAÑOL – LISTEN IN SPANISH!
LLAME AL +1 (214) 416-0400 | CÓDIGO DE CONFERENCIA 9200546
CALL +1 (214) 416-0400 | CONFERENCE CODE 9200546

TOGETHER WE

PLAN

NATIONAL CITY

Economic Development



TOGETHER WE

PLAN

NATIONAL CITY

Accessible Neighborhoods (10-Minute Destinations)



TOGETHER WE

PLAN

NATIONAL CITY

Ready for Future Technology



TOGETHER WE

PLAN

NATIONAL CITY

Polling Questions



Polling Question #4:

What types of transportation do you generally use?

Choose all that apply

- Walking
- Biking
- Private automobile
- Public transport
- Rideshare

Polling Question #5:

What influences the type of transportation you choose?

Choose all that apply:

- Safety
- Time
- Cleanliness
- Availability and access
- Cost

Polling Question #6:

What transportation improvements should we focus on?

Choose all that apply:

- Pedestrians
- Bicyclists
- Private automobiles
- Public transport
- Streetscape beautification (e.g. trees)

TOGETHER WE

PLAN

NATIONAL CITY

Tell Us More!

Mark specific locations via the Project Survey – Mobility Markers exercise

nationalcityca.gov/FGPU

National City Focused General Plan Update



Navigation bar: 1 WELCOME, 2 HOUSING BUDGET, 3 MOBILITY MARKERS, 4 RATE HOUSING TYPES, 5 WRAP UP

3 MOBILITY MARKERS

What to do Next Task

Please drag and drop at least 5 markers on the map.

- Home
- Destination
- Bike Issue
- Ped. Issue
- Transit Issue
- Vehicle Issue

Map Data Terms of Use Report a map error

ESCUCHAR EN ESPAÑOL – LISTEN IN SPANISH!
LLAME AL +1 (214) 416-0400 | CÓDIGO DE CONFERENCIA 9200546
CALL +1 (214) 416-0400 | CONFERENCE CODE 9200546

TOGETHER WE

PLAN

NATIONAL CITY

Questions & Answers





SAFETY ELEMENT

What is a Safety Element?

Addresses the potential short and long-term risks of fires, floods, earthquakes, landslides, climate change, hazards, emergency services and disaster response, and other locally relevant safety issues.



Key Topics and Drivers

State legislation:

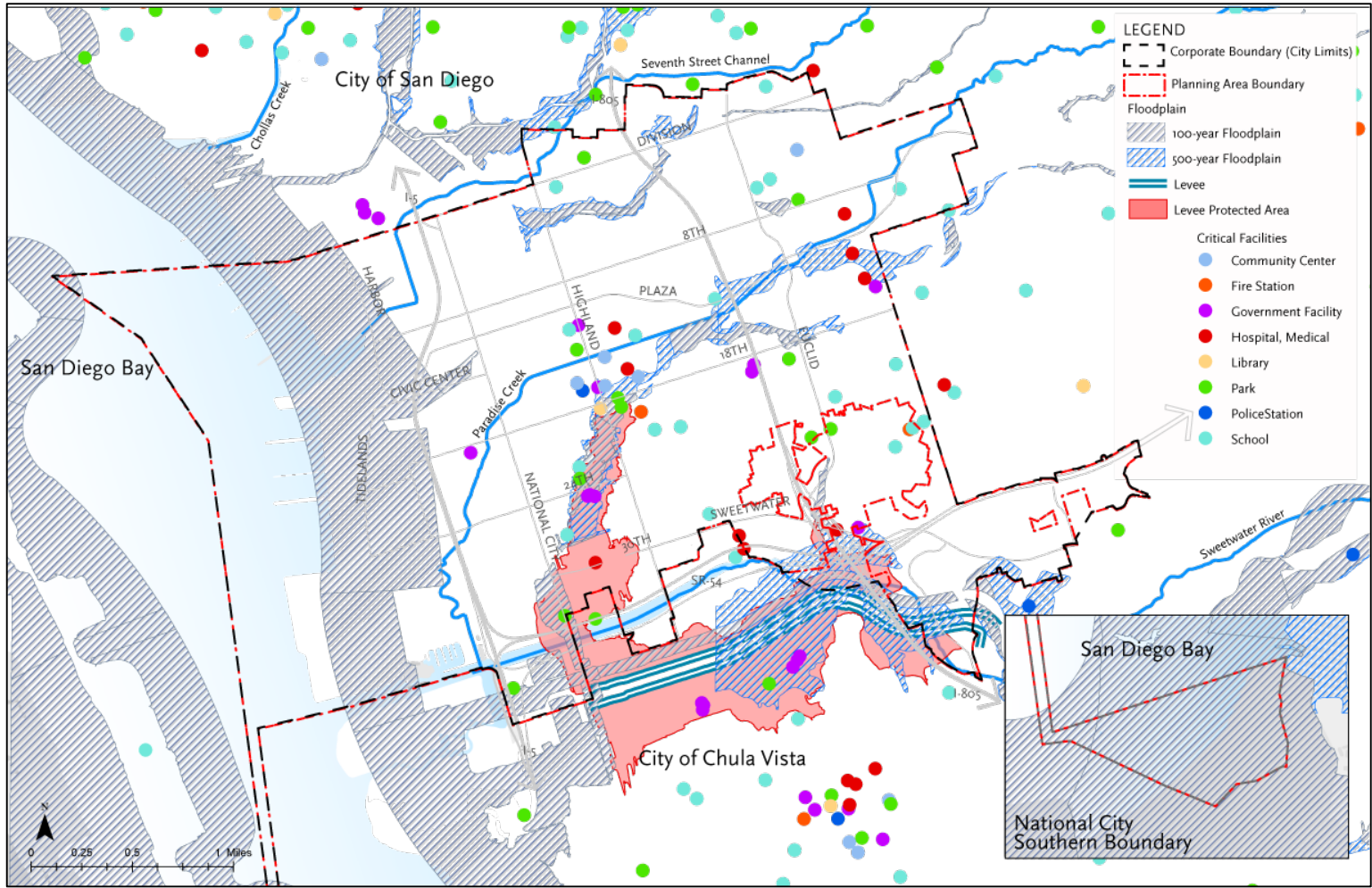
- SB 379: Requires safety element updates to include climate adaptation and resilience strategies
- SB 1000: Identify environmental justice communities
- SB 1035: Revise the safety element no less than every eight years (tied to Housing Element cycle)

Hazard Mitigation Planning
Seismic and Geologic Hazards
Flood Hazards and Inundation
Fire and Emergency Services
Emergency and Disaster Preparedness & Response
Hazardous Materials, Brownfields, and Military Installations
Climate Change, Adaptation, and Resilience

Natural Hazards: Seismic, Geologic Flooding and Wildfire

Key updates:

- FEMA Floodplain Maps



Updated DRAFT FEMA Floodplain Map

ESCUCHAR EN ESPAÑOL – LISTEN IN SPANISH!
 LLAME AL +1 (214) 416-0400 | CÓDIGO DE CONFERENCIA 9200546
 CALL +1 (214) 416-0400 | CONFERENCE CODE 9200546

TOGETHER WE

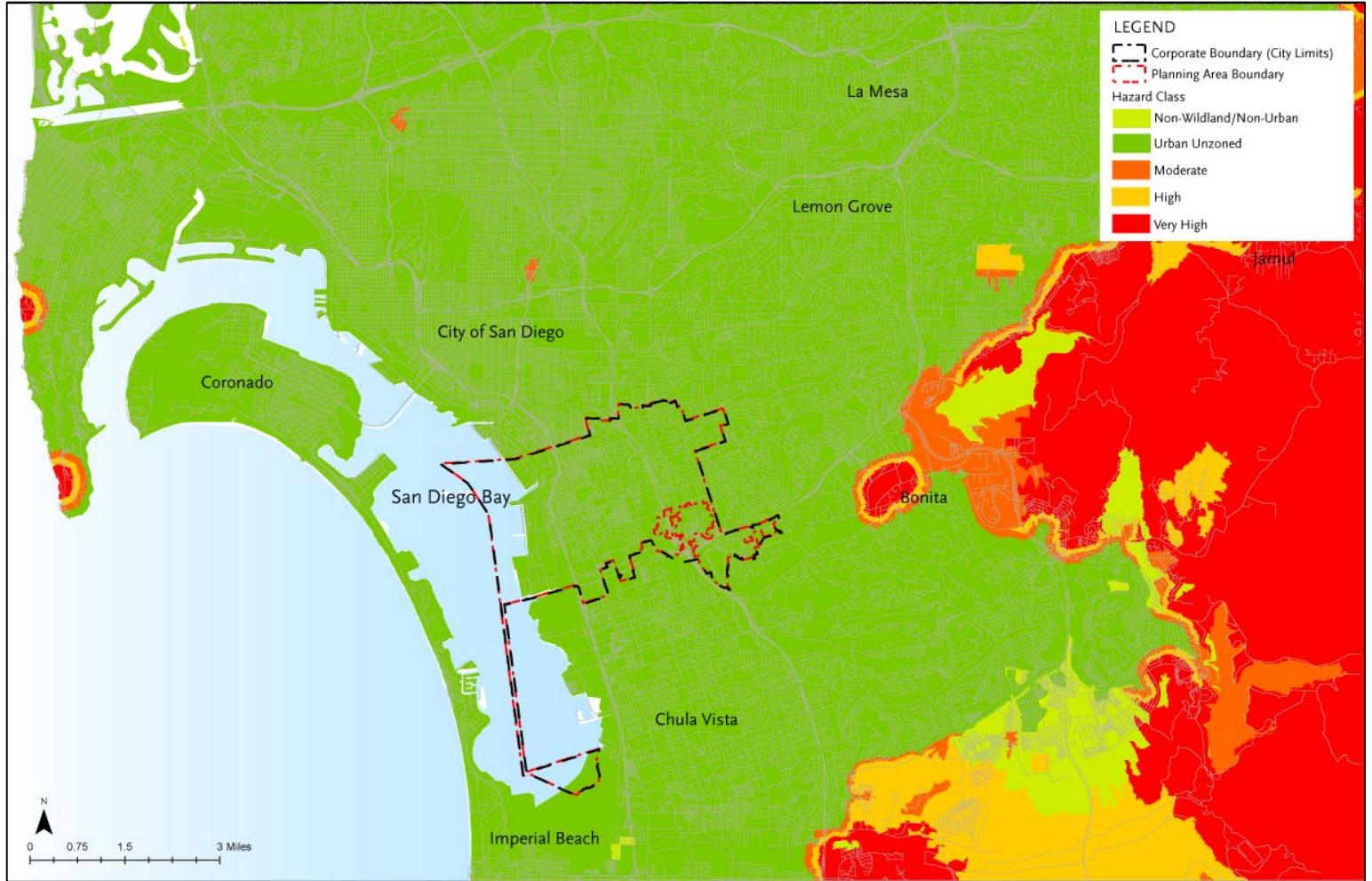
PLAN

NATIONAL CITY

Natural Hazards: Seismic, Geologic Flooding and Wildfire

Key updates:

— CALFIRE Wildfire Hazards



Updated DRAFT CALFIRE Wildfire Hazard Map

ESCUCHAR EN ESPAÑOL – LISTEN IN SPANISH!
LLAME AL +1 (214) 416-0400 | CÓDIGO DE CONFERENCIA 9200546
CALL +1 (214) 416-0400 | CONFERENCE CODE 9200546

TOGETHER WE

PLAN

NATIONAL CITY

Emergency Response and Disaster Preparedness

Key updates:

- Emergency Response Times

Fire Department:

- Average response time of 6 minutes 34 seconds for 911-emergency calls

Police Department:

- Average response time of 5 minutes 15 seconds for Priority 1 Emergency Calls

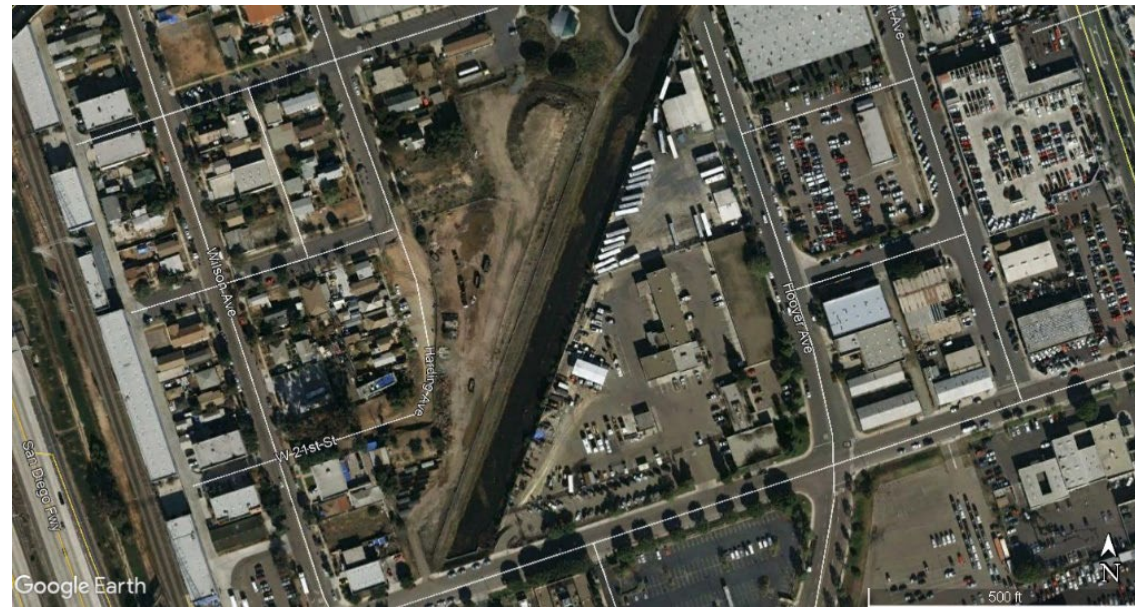
SLIDE 60



ESCUCHAR EN ESPAÑOL – LISTEN IN SPANISH!
LLAME AL +1 (214) 416-0400 | CÓDIGO DE CONFERENCIA 9200546
CALL +1 (214) 416-0400 | CONFERENCE CODE 9200546

Brownfields and Other Hazards

- Brownfield sites are properties that may include the presence of a hazardous substance, pollutant, or contaminant.
- Difficult to redevelop due to remediation costs and liability concerns.
- Once remediated, brownfields present opportunities for infill development.



Paradise Creek Apartments Site

Before (above)
After (right)



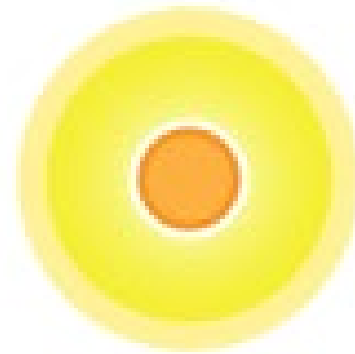
ESCUCHAR EN ESPAÑOL – LISTEN IN SPANISH!
LLAME AL +1 (214) 416-0400 | CÓDIGO DE CONFERENCIA 9200546
CALL +1 (214) 416-0400 | CONFERENCE CODE 9200546

Climate Adaptation and Resilience

- Climate-related risks include rising temperatures, sea level rise, and other public health and safety-related issues.
- State law (SB 379) requires an assessment of climate-related vulnerabilities and a comprehensive strategy to respond.
- Impacts to be assessed based on modeling tools from State resources (Cal-Adapt).

SLIDE 62

Climate-Related Risks



Extreme Heat



Extreme
Precipitation



Sea Level Rise

ESCUCHAR EN ESPAÑOL – LISTEN IN SPANISH!
LLAME AL +1 (214) 416-0400 | CÓDIGO DE CONFERENCIA 9200546
CALL +1 (214) 416-0400 | CONFERENCE CODE 9200546

TOGETHER WE

PLAN

NATIONAL CITY

Polling Questions



Polling Question #7:

What safety-related issues concern you the most?

Choose all that apply:

- Natural hazards: seismic, geologic, flooding, and wildfire
- Crime or emergency response
- Hazardous materials and brownfields
- Climate change adaptation

TOGETHER WE

PLAN

NATIONAL CITY

Questions & Answers





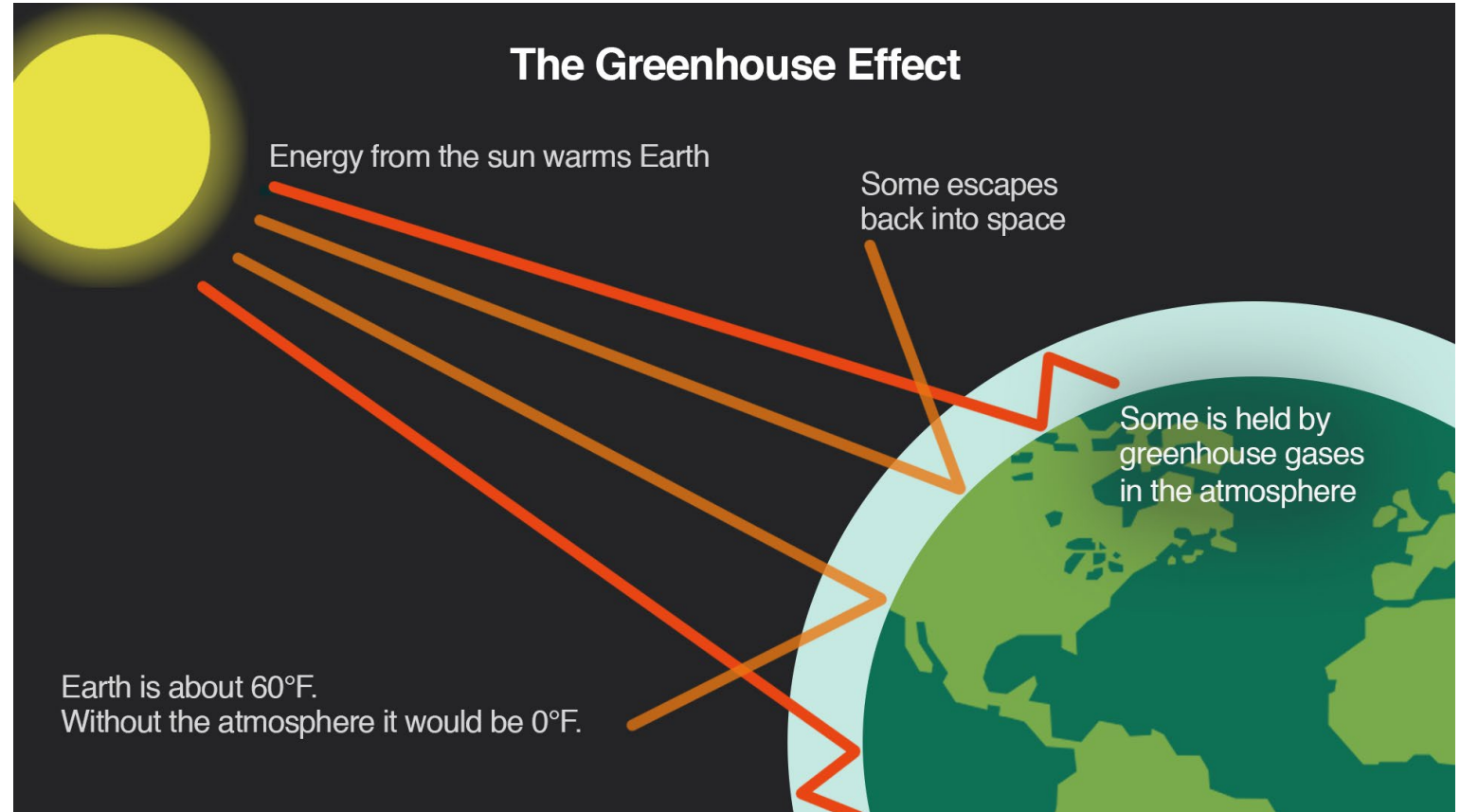
CLIMATE ACTION PLAN

CHAMBER OF COMMERCE & VISITOR CENTER

901

Climate Planning: Overview

- Greenhouse Gases (GHGs) are gases that trap heat in the atmosphere
- GHG stem mainly from fossil fuels used in transportation
- Communities can reduce their GHG contributions through climate planning



The Greenhouse Effect, illustrated above.

Climate Action Plan (CAP)

A CAP guides the City in reducing its contribution to global climate change by:

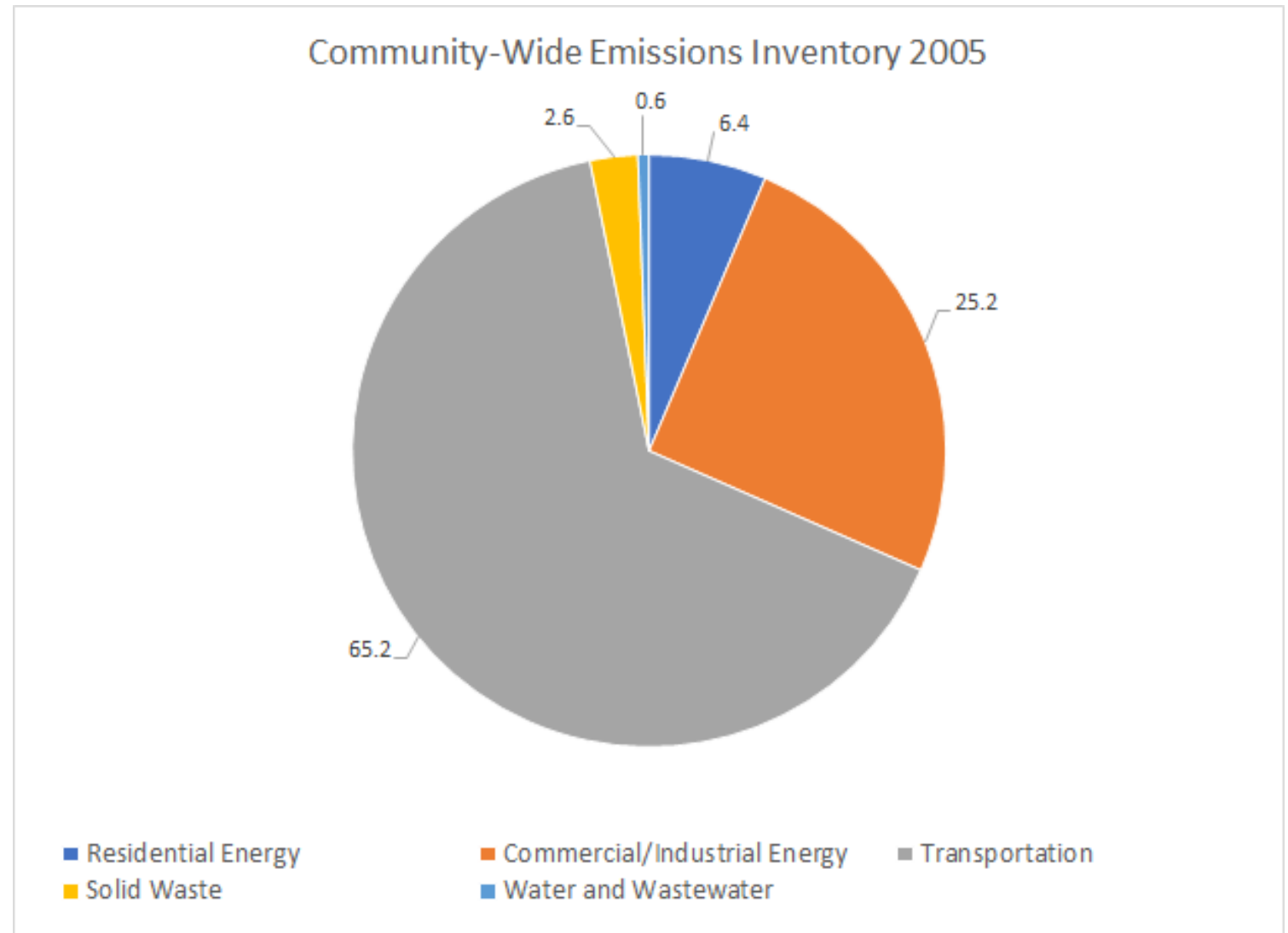
- Inventorying and forecasting GHG emissions
- Creating emission reduction targets
- Proposing measures & policies
- Implementing performance standards & monitoring programs



Climate Action Plan: GHG Emissions Inventory

- Electricity and Natural Gas
- Transportation
- Solid Waste and Wastewater
- Water
- Government Operations

Inventory update is currently in progress.



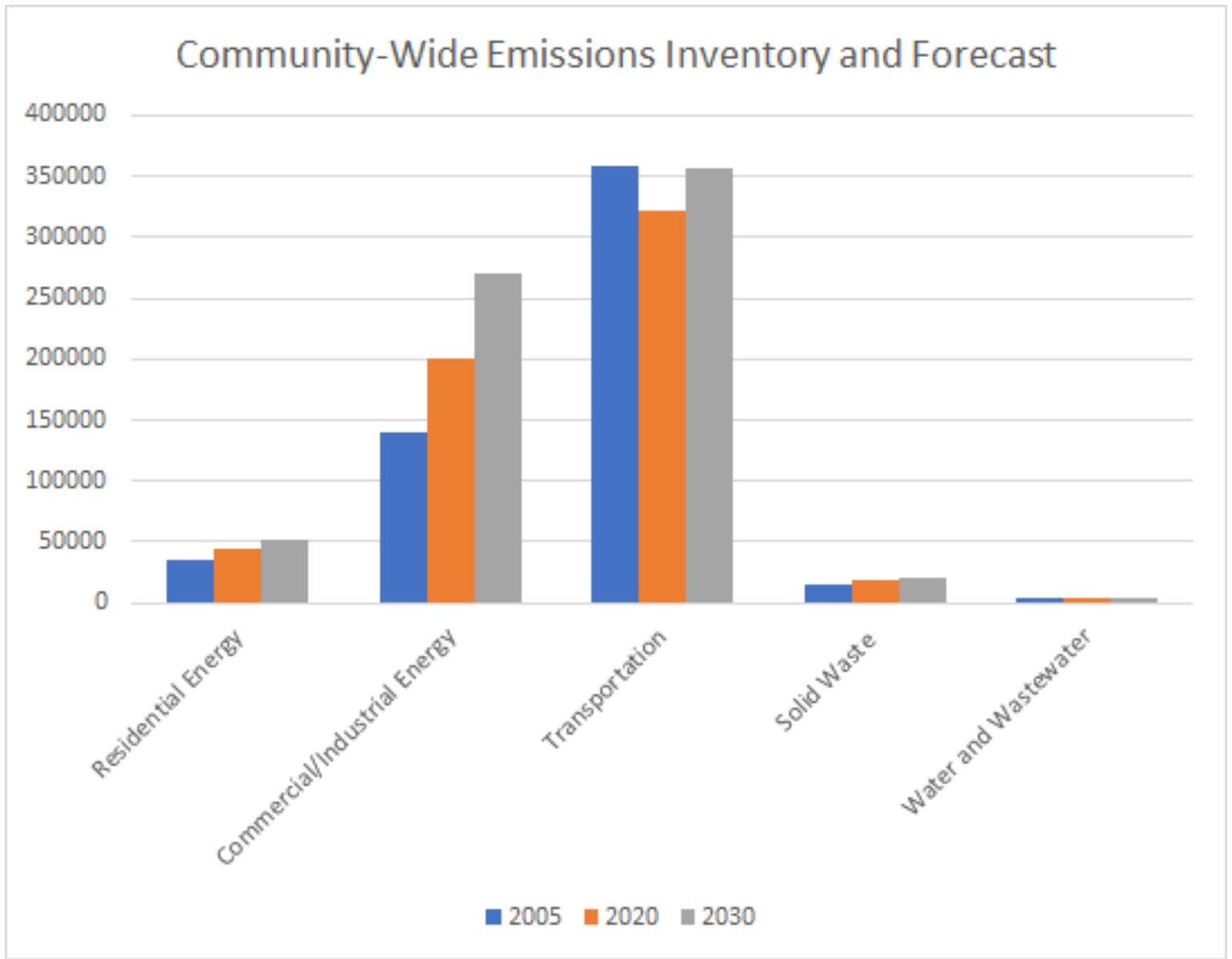
Source: CACP Model, ICLEI, 2009 and DC&E, 2010.

Transportation (65.2%) and Commercial/Industrial Energy (25.2%) shown as largest emissions sectors.

ESCUCHAR EN ESPAÑOL – LISTEN IN SPANISH!
 LLAME AL +1 (214) 416-0400 | CÓDIGO DE CONFERENCIA 9200546
 CALL +1 (214) 416-0400 | CONFERENCE CODE 9200546

Climate Action Plan: GHG Emissions Forecast

- “Business As Usual” (BAU) emissions forecasted through the General Plan Update horizon year (2050).
- BAU forecast used as a comparison point for emissions reduction efforts.



Source: CACP Model, ICLEI, 2009 and DC&E, 2010.

ESCUCHAR EN ESPAÑOL – LISTEN IN SPANISH!
 LLAME AL +1 (214) 416-0400 | CÓDIGO DE CONFERENCIA 9200546
 CALL +1 (214) 416-0400 | CONFERENCE CODE 9200546

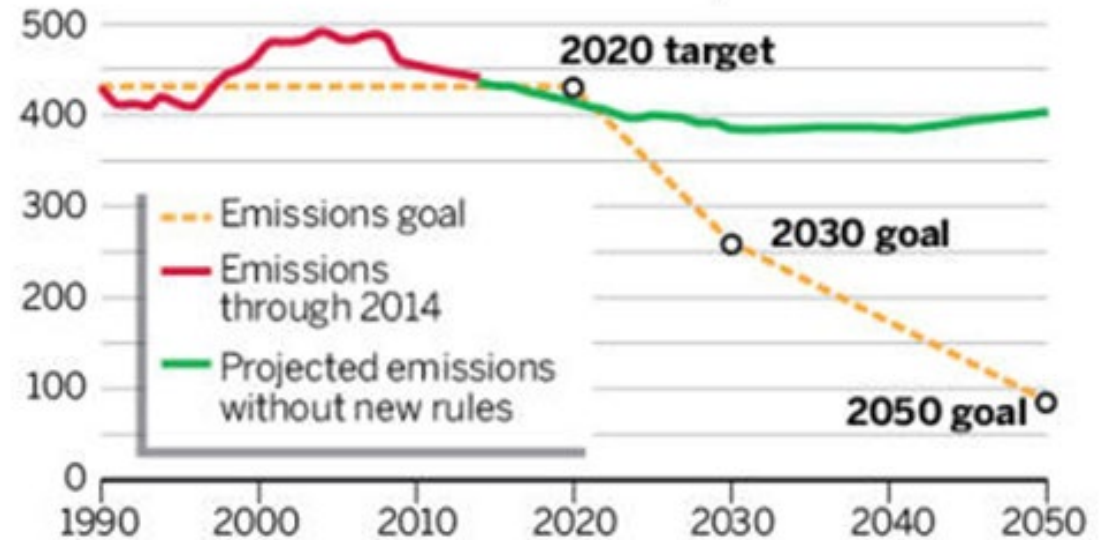
Climate Action Plan: GHG Emissions Targets

- Emission targets set by the State (AB32, SB32, Executive Order S-3-05)
- California is required to reduce greenhouse gases by 80% below 1990 levels by 2050
- Align community targets with state reduction targets

CALIFORNIA GREENHOUSE GAS EMISSIONS

California is on track to meet its goal for greenhouse gas emissions by 2020, but will need to do far more to reach targets for 2030 and 2050.

Million metric tons of carbon dioxide equivalent



Source: California Air Resources Board

BAY AREA NEWS GROUP



Climate Action Plan: Emissions Reduction Strategies

Strategies linked to land use
and transportation elements.

Energy

- Reduce consumption through energy-efficiency
- Encourage renewable energy (Community Choice Aggregation [Energy])
- Encourage building energy audits

Transportation and Land Use

- Encourage “smart growth” that fosters well-connected land uses and transportation investments to reduce VMT
- Support investments in multi-modal infrastructure (biking, walking, and transit)
- Encourage teleworking and other transportation demand management (TDM) measures

Solid Waste, Wastewater, and Water

- Establish incentives for green waste recycling programs
- Encourage the use of gray and reclaimed water

Source: National City's Climate Action Plan, 2011

ESCUCHAR EN ESPAÑOL – LISTEN IN SPANISH!
LLAME AL +1 (214) 416-0400 | CÓDIGO DE CONFERENCIA 9200546
CALL +1 (214) 416-0400 | CONFERENCE CODE 9200546

TOGETHER WE

PLAN

NATIONAL CITY

Climate Action Plan: Next Steps

- CAP relies heavily on community participation
- Help to make choices to reduce emissions in your community



TOGETHER WE

PLAN

NATIONAL CITY

Polling Questions



Polling Question #8:

What emissions-reducing activities do you currently participate in?

Choose all that apply:

- Alternative transportation (Ride transit, bike to work, etc.)
- Composting
- Solar or energy efficient appliances
- Landscape with drought-tolerant plants
- Other

Polling Question #9:

What strategies would you like to see National City implement to reduce emissions?

Choose all that apply:

- Increase opportunities for other modes of transportation
- Pursue incentives for financing renewable energy projects
- Increase recycling and composting initiatives
- Pursue Community Choice Energy

TOGETHER WE

PLAN

NATIONAL CITY

Questions & Answers



Help Shape Your Community!

1. **Take a survey!** Visit nationalcityca.gov/FGPU

2. Upcoming Webinars

- **Monday, August 24** from 1pm-2:30pm
- **Thursday, August 27** from 5pm-6:30pm
- **Saturday, August 29** from 9am-10:30am
- **Miércoles 9 de Septiembre** – Seminario Web en Español desde 6pm-7:30pm.
(Wednesday, September 9 – *Spanish Webinar from 6pm-7:30pm*)

3. Call during office hours

Call Tara Lake at (619) 849-5415 during the times listed below to speak in English.

- **Tuesday, August 25** from 10am-12pm
- **Wednesday, August 26** from 3pm-5pm
- **Friday, August 28** from 10am-12pm

Llame durante las horas de oficina que se indican en la lista abajo. Comuníquese con Myra Martínez al (619) 336-4301.

- **Martes, 25 de Agosto** desde 10am-12pm
- **Miércoles, 26 de Agosto** desde 3pm-5pm
- **Viernes, 28 de Agosto** desde 10am-12pm
- **Jueves, 10 de Septiembre** desde 5pm-6pm



Tara Lake

Project Manager

Tara.Lake@wsp.com

(619) 849-5415

Carlos Aguirre

Director of the National City Housing Authority

caguirre@nationalcityca.gov

(619) 336-4391