

Installation Resiliency Study: National City

City Council Meeting

January 16, 2023



NATIONAL CITY
IN THE CENTER OF IT ALL

Tom Bertulis, MS, PE, PTOE
Senior Associate, KTUA
Tom@KTUA.com





Agenda and Project Team

- Grant Funding and Project Extents
- Analysis Summary
- Project Selection and Ranking
- Project Concepts



ktua

Kimley»Horn

Expect More. Experience Better.

ktua



About the Project

- A Resiliency Planning Grant
- The grant was received by:
 - City of National City
 - in partnership with Naval Base San Diego,
 - involves projects **both in National City and San Diego**
- Funded from the **Office of Local Defense Community Cooperation (OLDCC)**

OLDCC Resiliency Grant

Purpose/Needs

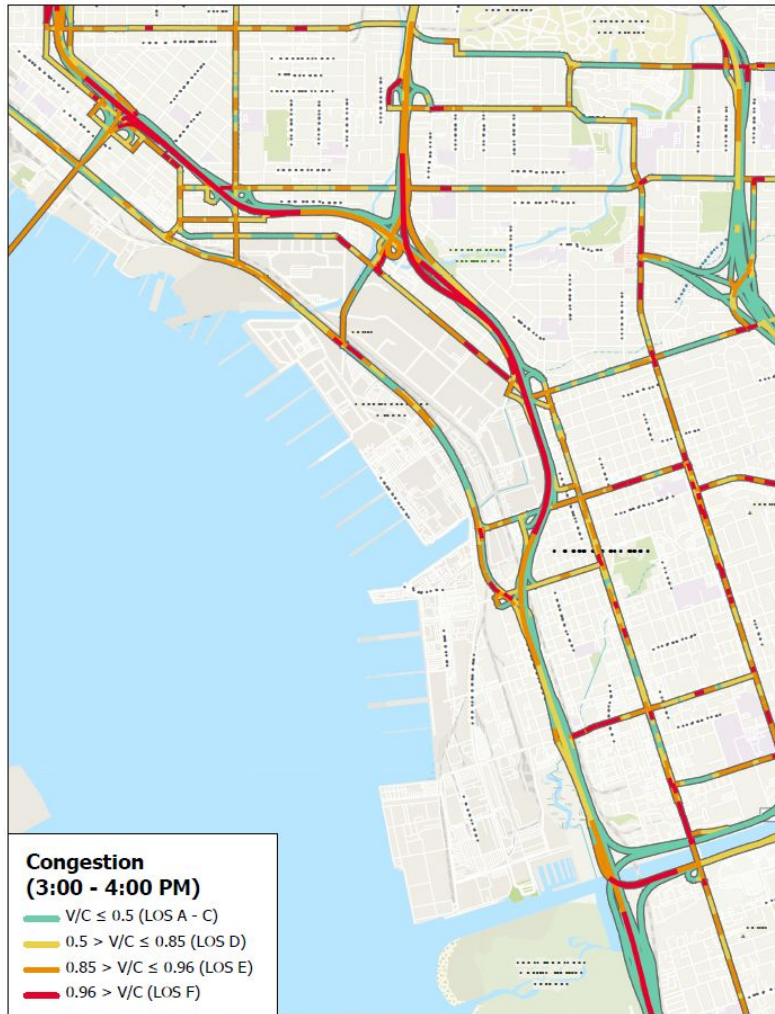
1. Encouraged **coordination & collaboration** between local agencies as needed **to build consensus on project priorities** that address:
 - a. transportation,
 - b. traffic, and
 - c. parking needs around NBSD.

1. **Utilized** SANDAG's Military Working Group (**MWG**) **members** as an Advisory Committee.

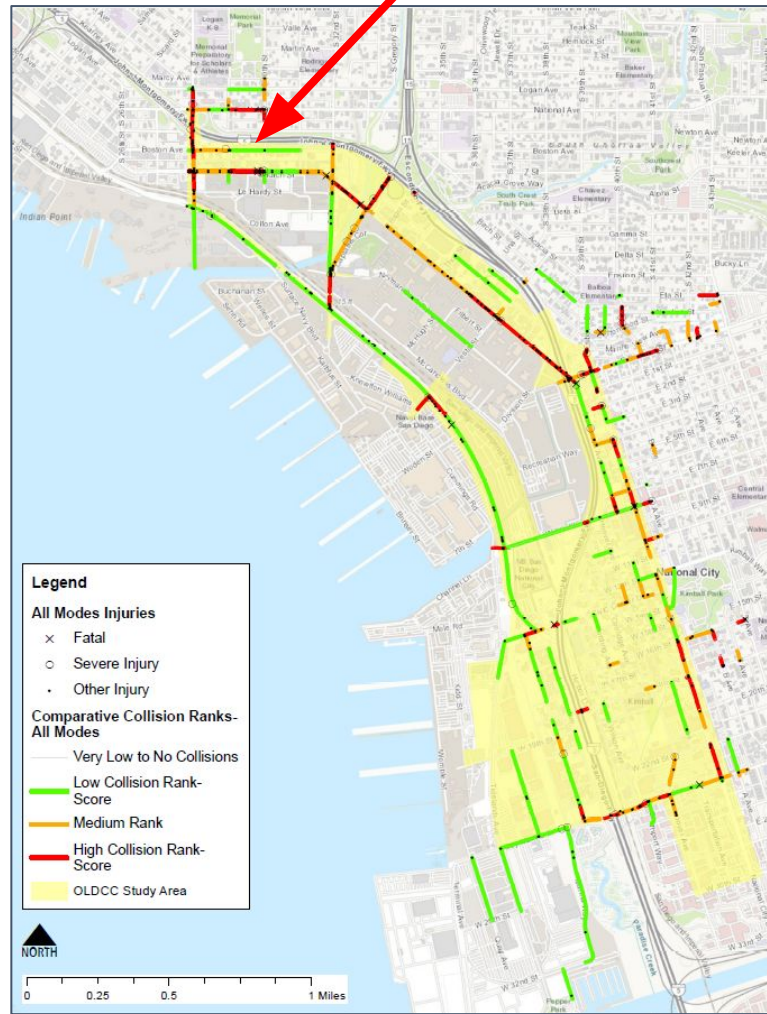
1. The **Policy Committee** (*Mayor, Vice Mayor, DPW Director, NBSD Rep*) reviewed the Study, made **final recommendations** reflected in the Study.

Traffic Analysis

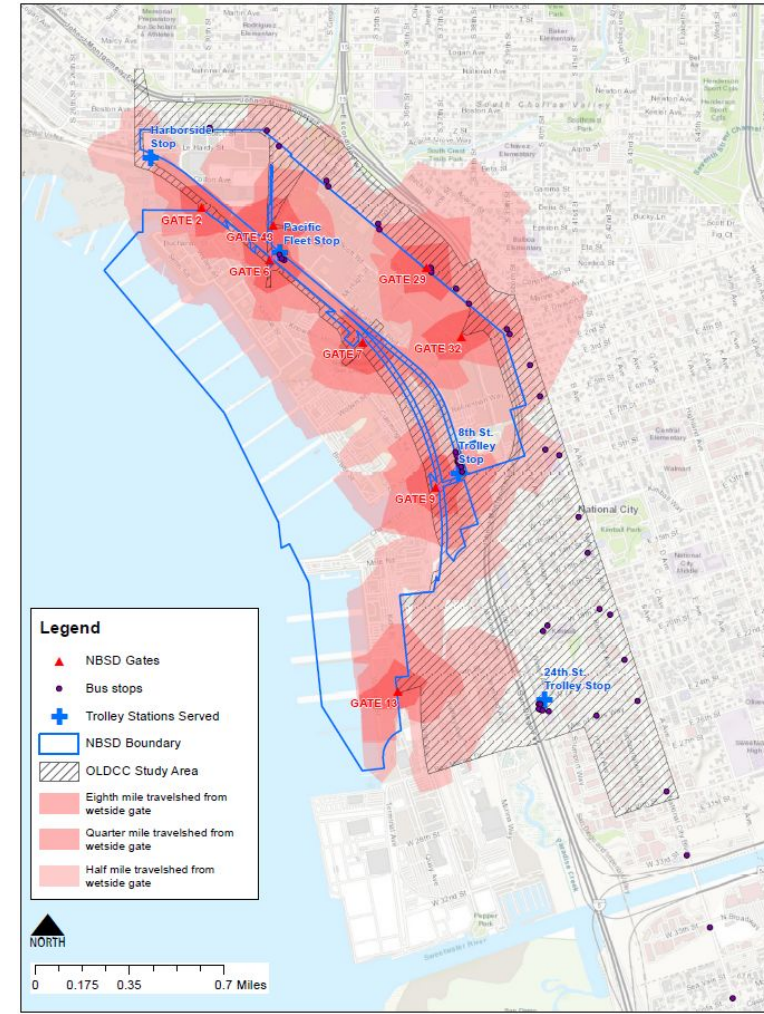
OLDCC Study area in yellow



Traffic Congestion



Collisions

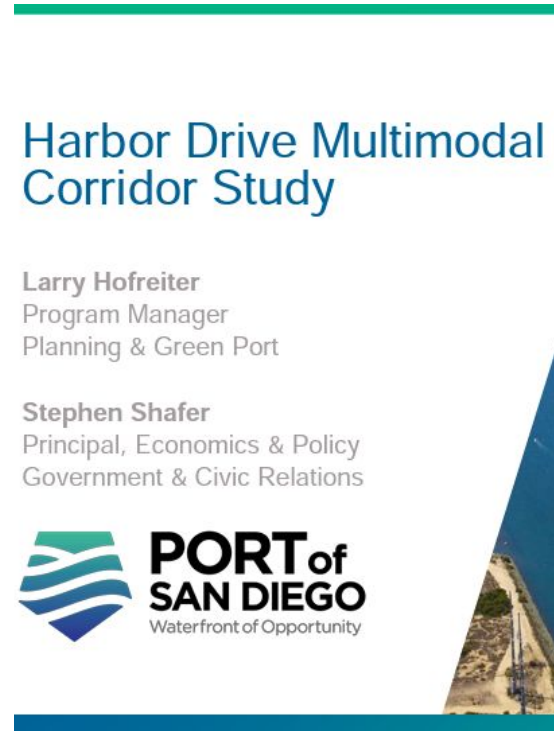


Walksheds

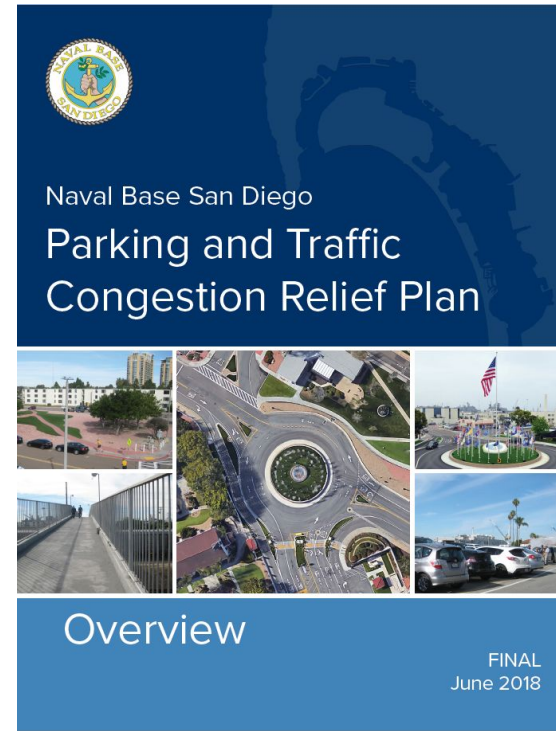
Existing Planning Documents Research



SANDAG Regional
**Military Multimodal
Access Strategy**



Port of San Diego:
**Harbor Drive
Multimodal Corridor
Study**




Naval Base San Diego
**Parking and Traffic
Congestion Relief
Plan**

Additional documents

- 8th Street and Roosevelt Ave Caltrans **ATP Grant**
- Roosevelt Ave **Smart Growth**
- National City Marina District **Balanced Land Use Plan**, 2016
- National City Integrated Neighborhoods Study (**Intraconnect**)
- & more!
- **Close to 180**

**Planned Projects
identified**

Prioritizing and Ranking Projects



RANK	OBJ ID	PRIMARY CORRIDORS AND INTERSECTIONS (TOP 30)	LOCATION N (START)	LOCATION (END)	Plan that the Project is sourced from	Collisions/mile or Collisions/int SCORE	Proximity* to NBSD Gates (2, 6, 7, 9, 13, 29, 32, 43) SCORE	Average Congestion (V/C) SCORE	Pedestria Quality SCORE	Bicycle Level of Traffic Stress (LTS) SCORE	Connection SCORE (STRAHNET, freeways, trolleys lines, etc)	TOTAL SCORE
1	ID68	32nd St	Harbor Dr	Main St	CIP Caltrans	0	9	9.9	4	4	10	42.6
2	ID128	Station	N/A	N/A	Waterfront Plan	0	9	0	4	4	25	42.0
3	ID27	Station	N/A	N/A	Waterfront Plan	1	9	8.5	4	4	15	41.5
4	ID52	28th St	Harbor Dr	Main St	Diego Harbor	10	3	9.6	4	4	10	40.6
5	ID40	Ave	N/A	N/A	Diego Harbor	8	3	8.5	3	3	10	35.5

- **Safety** : Density of collisions
- **Congestion** : Average Peak Period Congestion (Volume / Capacity)
- **Connectivity** : Proximity to NBSD Gate, STRAHNET Corridors
- **Pedestrian** : Quality of Facilities: Sidewalks, Buffers, Crossings
- **Bicycle** : Level of Traffic Stress based on Speed, # Lanes, Bike Facility Type

Level 1 Projects

Identified as high priority by project stakeholders. Level 1 includes an approximate 30% conceptual design plan.

Bay Marina Drive/Mile of Cars Way.....84

See Appendix X

Main Street.....86

See Appendix X

Level 2 Projects

Identified as medium priority by project stakeholders. Level 2 includes an approximate 10% conceptual design plan.

National City Boulevard.....88

8th Street (Dry Side).....90

19th Street.....92

Level 3 Projects

Identified as low priority by project stakeholders. Level 3 includes a list of improvements only. The 8th Street (Pre-Signal) project also includes an approximate 5% conceptual design plan as well.

8th Street (Pre-Signal).....94

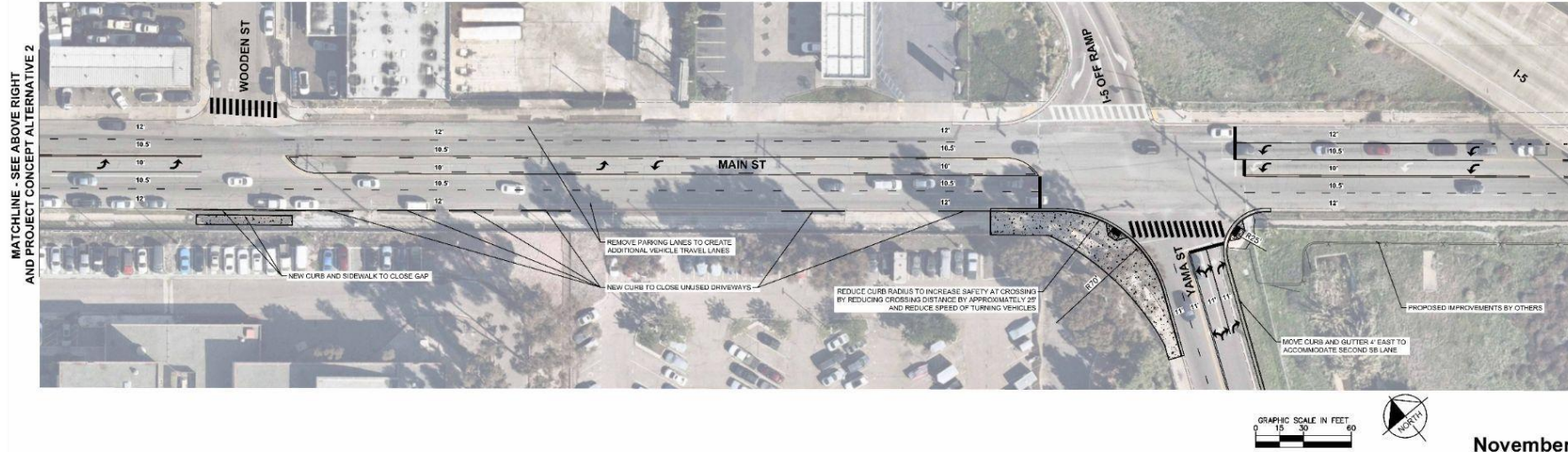
8th Street (Wet Side).....96

Civic Center Drive.....98

KEY TAKEAWAY: Several projects in or nearing construction that *need to be completed* before these projects can effectively be finalized and moved forward:

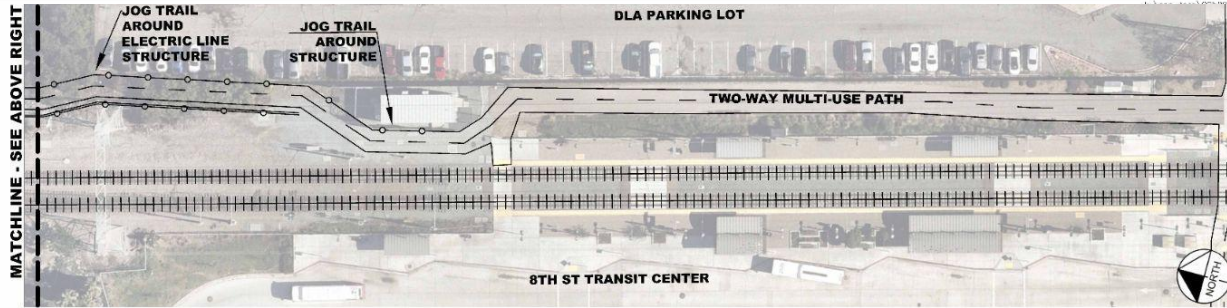
- 1. Harbor Drive 2.0 Project**
- 2. Vesta Street Bridge Project**
- 3. 8th St/Roosevelt ATP Project**
- 4. Bayshore Bikeway Phase 4 Project**

Main Street PRELIMINARY CONCEPT



November 2023

Office of Local Defense Community Cooperation
Main Street Between Vesta Street and Osborn Street | Page 1/2
Project Concept Alternative 1



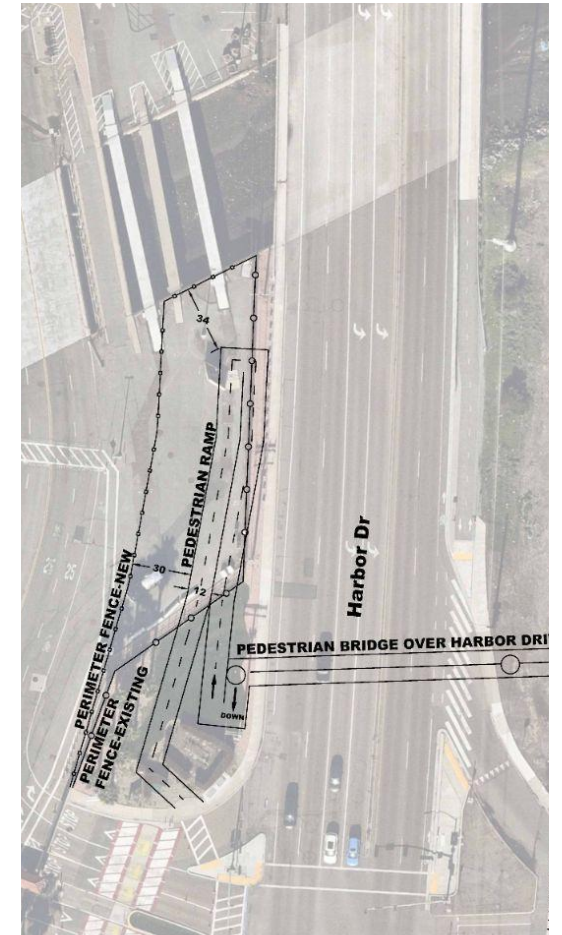
8th Street: Bridge Over Paleta Creek

PRELIMINARY CONCEPT



Bike Turnstile sample

- 8th St to NBSD Dry Side
- Two-Way Multi-Use Path
- Bike Turnstile
- Bridge Over Creek



8th Street: Bridge Over Harbor Drive

PRELIMINARY CONCEPT



Thank You

Tom Bertulis, MS, PE, PTOE
Senior Associate, KTUA Urban Planning and Landscape Architecture
Tom@KTUA.com