

TOGETHER WE

**PLAN**

NATIONAL CITY

# National City Climate Action Plan (CAP) 2023 Update

# Agenda

---



## **CAP Update**

Where We're Going  
Emissions Profile  
Past Success  
Implementation summary



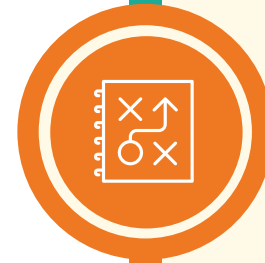
## **CAP Summary**

Community-Wide Emissions Inventory  
National City & Legislative Baseline Forecasts  
Reduction Strategies Overview



## **Background Overview**

State Drivers  
Regional Picture  
2011 CAP Implementation Status  
Unique Profile



## **Strategies & Priorities**

Detailed Greenhouse Gas Reduction

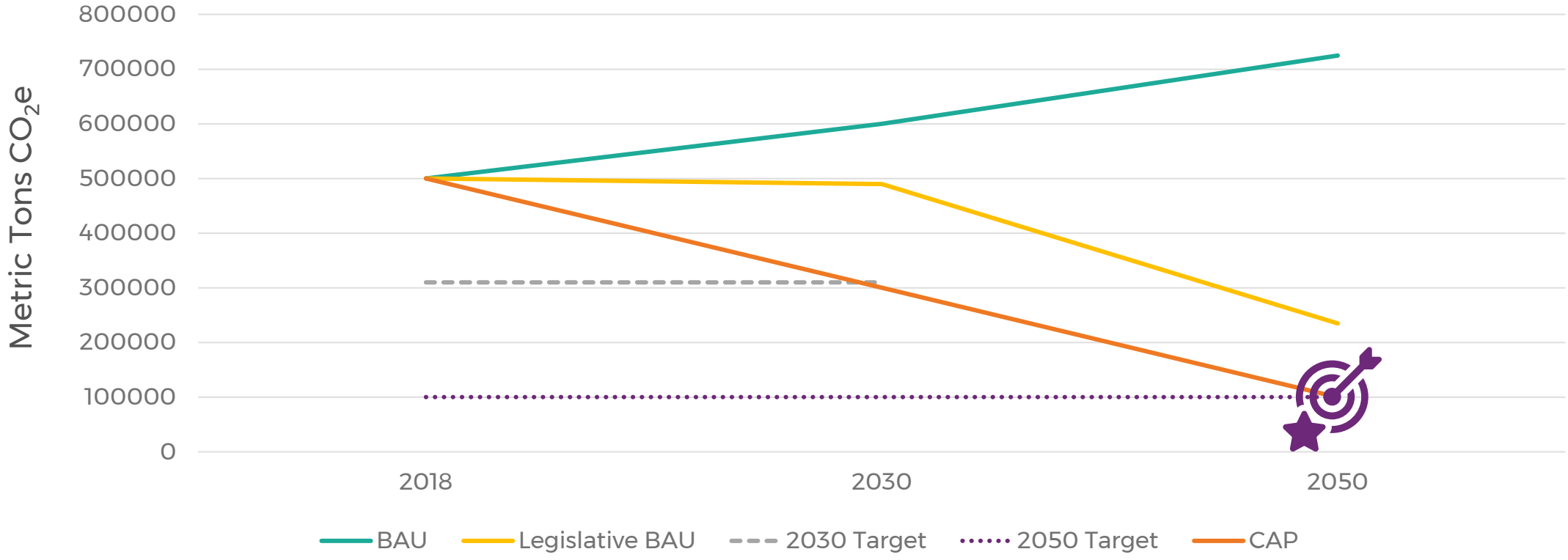
# CAP Update

This Climate Action Plan Update (CAP Update) addresses the major sources of greenhouse gas (GHG) emissions in National City and sets forth a detailed and long-term strategy that the City and community can implement to help the State achieve its GHG emissions reduction targets.

This CAP Update builds upon the goals of the 2011 CAP and provides an updated baseline emissions inventory for the City.

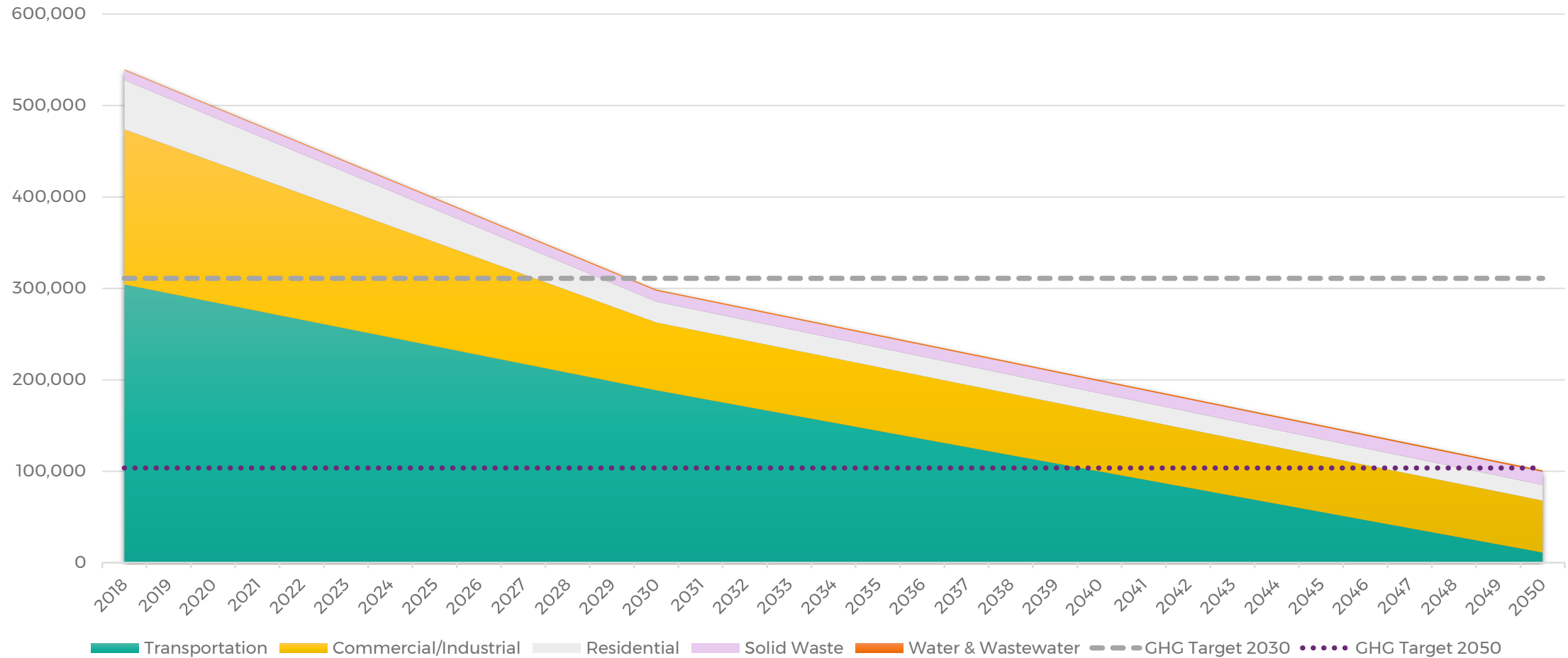
# Where We're Going

Mitigated Forecast with Legislative Actions and Reduction Strategies



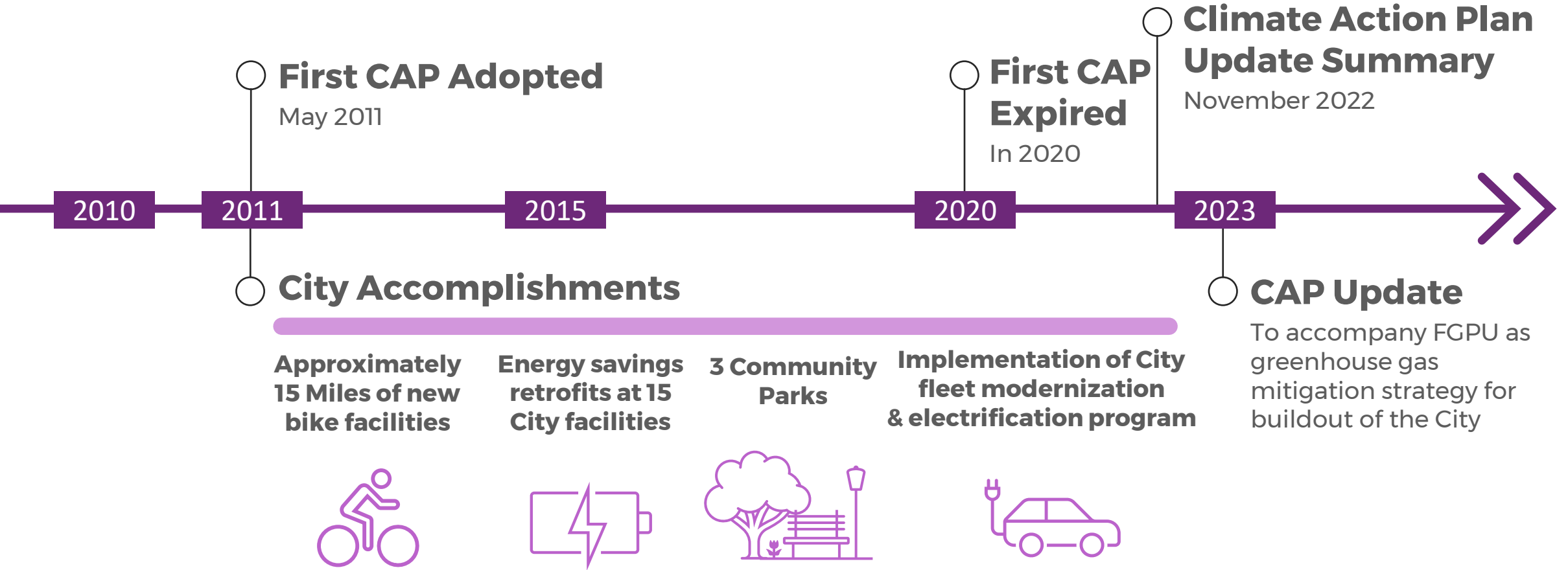
# Emissions Profile

## Mitigated Forecast Emissions by Sector



# Our Past Success

Where we've gone



# 2011 CAP Implementation Summary



# Climate Action Plan Summary

November 2022



- 1 Developed National City Greenhouse Gas (GHG) Emissions Inventory (2018)
- 2 Completed Baseline Forecasts (“Business as Usual” or BAU projections)
  - Established GHG Emissions Targets to align with State targets
  - Developed mitigated emissions forecast
- 3 Reviewed National City’s 2011 CAP strategies and developed revised/new emissions reduction strategies



# Community Engagement

Community Outreach Completed to Date: 2020 – 2023

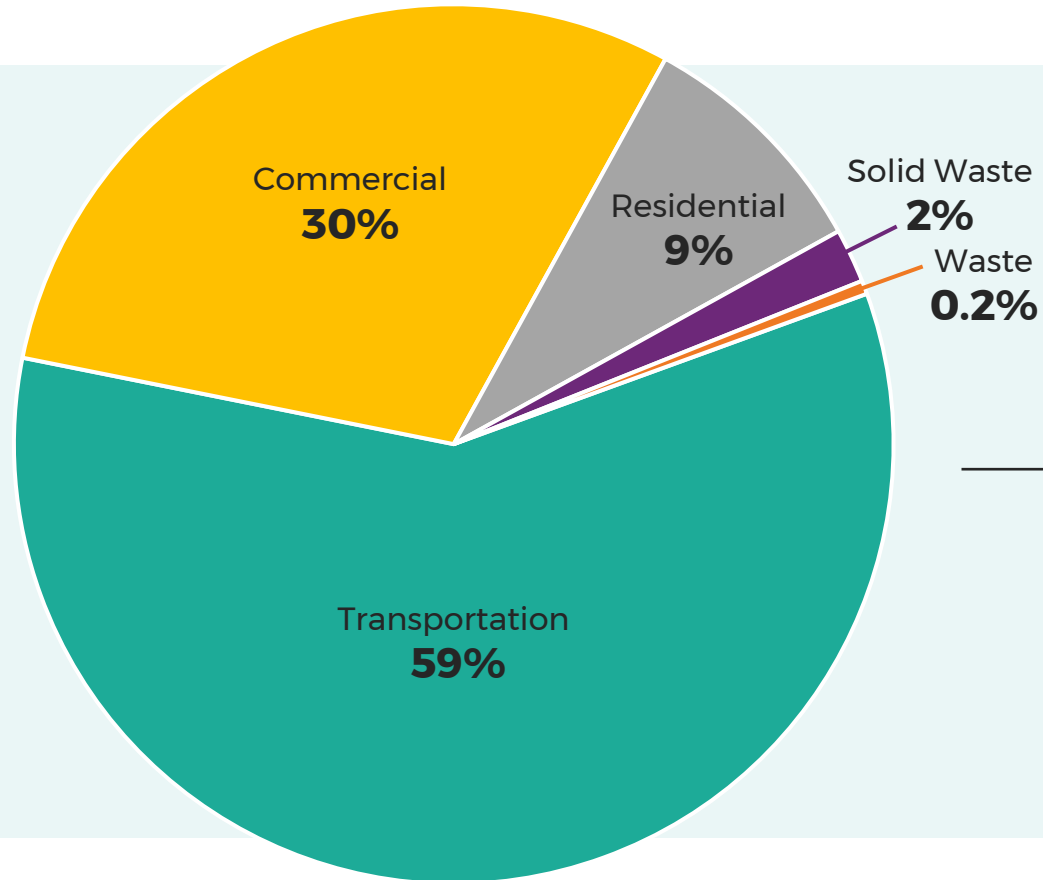
- Online Survey
- Webinars (7 total)
- Telephone Office Hours
- Interactive Map
- Stakeholder Interviews
- Planning Commission & City Council Briefings
- Workshops & Hearings (for Housing Committee, Planning Commission, and City Council)

# Climate Action Plan Summary

## Community-Wide Emissions Inventory

1

- Transportation
- Residential
- Waste
- Commercial and Industrial
- Water and Wastewater



TOGETHER WE  
**PLAN**  
NATIONAL CITY

CLIMATE ACTION PLAN  
FOCUSED GENERAL PLAN UPDATE  
NOVEMBER 2022

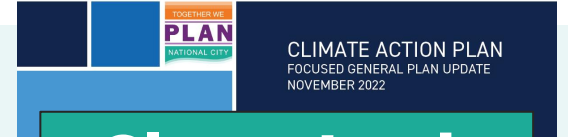
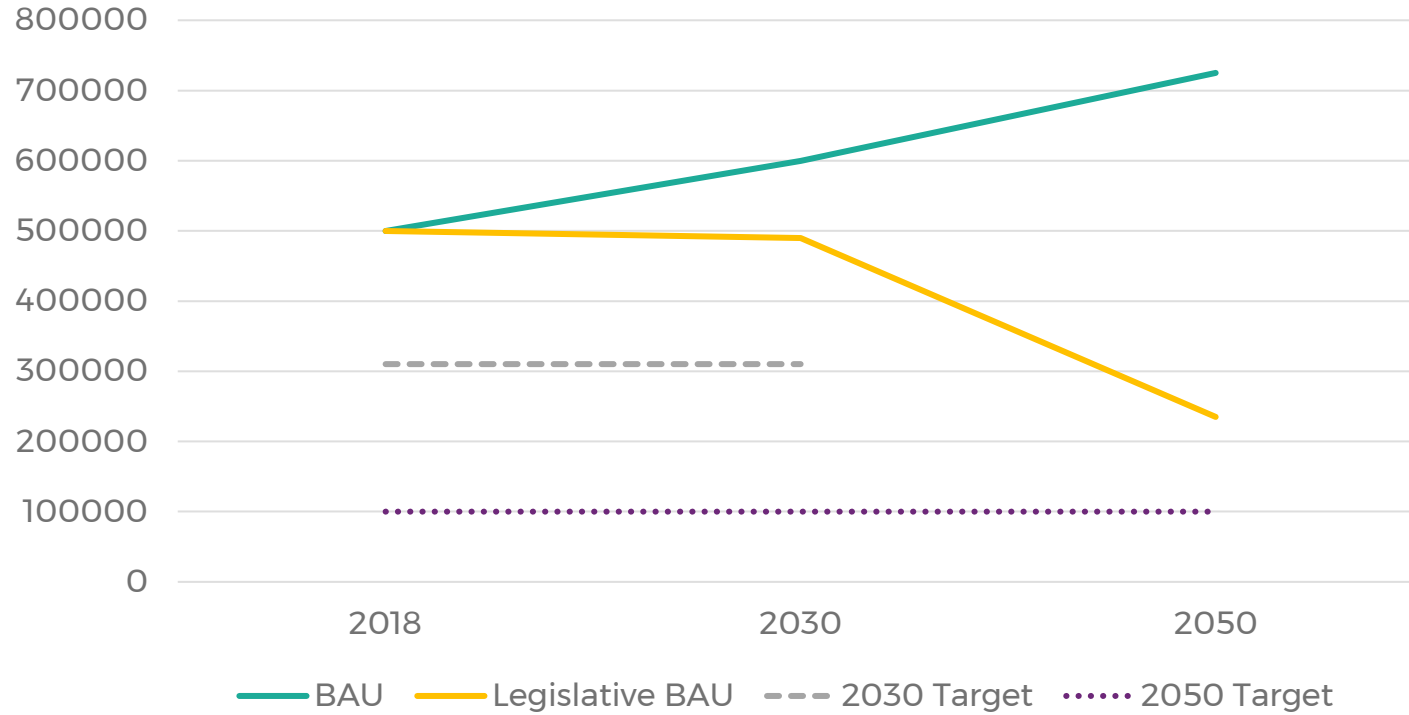
**Closer Look**

# Climate Action Plan Summary

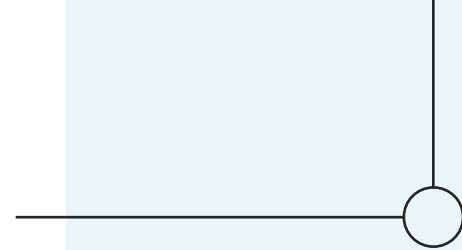
## National City and Legislative Baseline Forecasts

2

Metric Tons CO<sub>2</sub>e



**Closer Look**

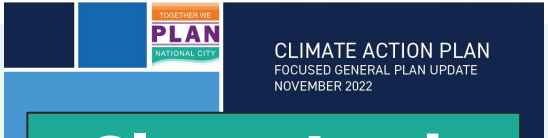


# Climate Action Plan Summary

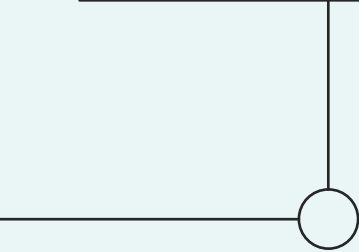
## Reduction Strategies Overview

3

Strategy	2018	2030	2050
Transportation	304,070	188,409	11,242
Commercial/Industrial	153,738	74,377	56,594
Residential	48,872	22,788	17,344
Solid Waste	10,492	11,907	14,367
Water and Wastewater	1,091	1,231	1,486
Emissions avoided from CAP measures		-185,171	-138,516
Emissions avoided from Federal and State Regulations		-123,888	-494,705
Total Reductions		-309,059	-633,221
<b>% Below 2018 Baseline Emissions</b>		<b>-42%</b>	<b>-81%</b>



**Closer Look**



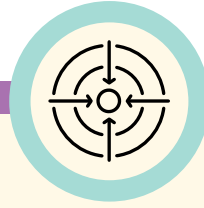
# Background Overview

2020 - 2023



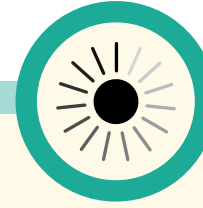
## State Drivers

What are they and why do they matter?



## Regional Picture

2020-2023



## 2011 CAP Implementation Status

National City Summary



## Unique Profile

What makes National City Unique?

# Background Overview 2020 - 2023

**2045**  
Net Zero



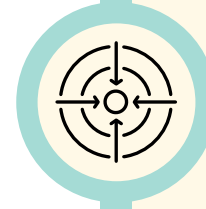
## State Drivers

- Electric Vehicle Mandate
- 2045 Net Zero Targets
- CARB Scoping Plan 2022

# Background Overview 2020 - 2023



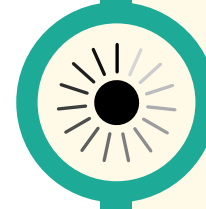
SAN DIEGO  
**COMMUNITY  
POWER**



## Regional Picture

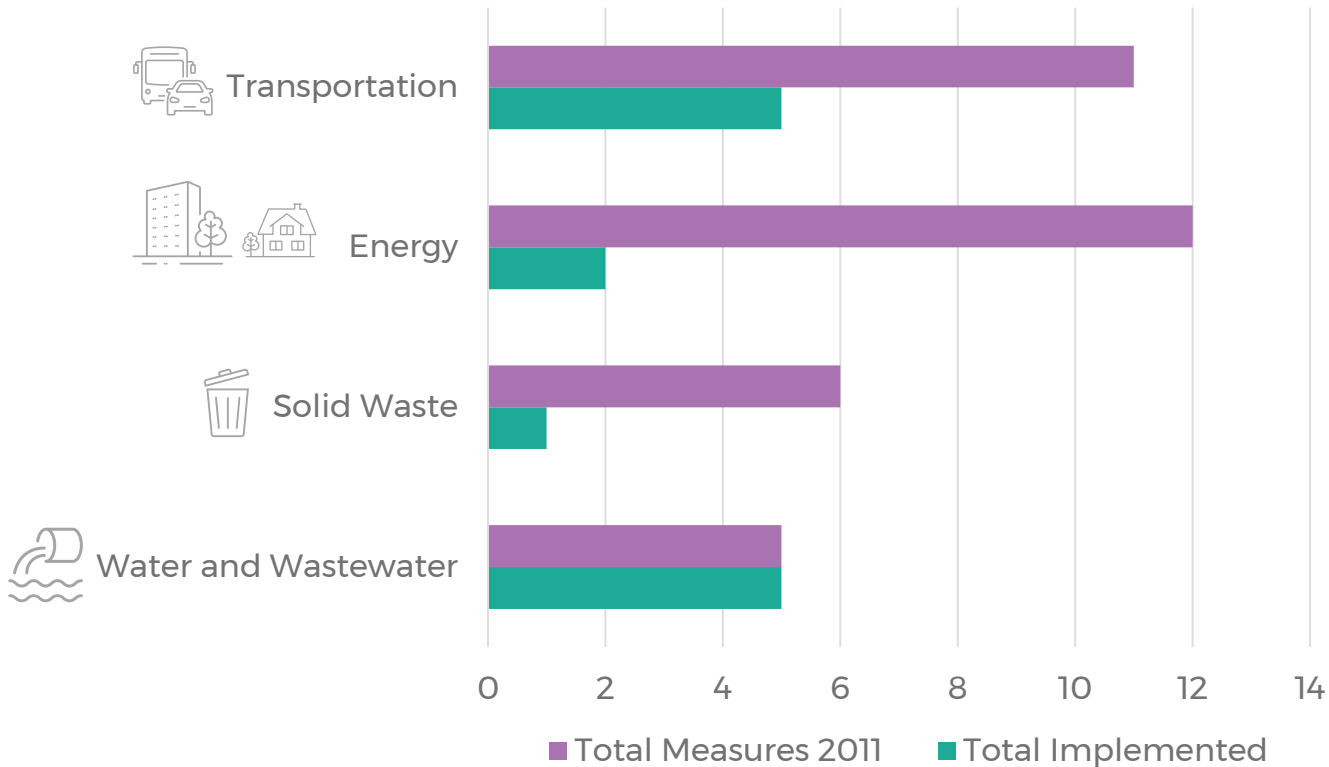
- Formation of San Diego Community Choice Power
- SANDAG – CAP and Funding
- El Cajon CAP Rescinded
- City of San Diego CAP updated 2022 and Status
- Low-hanging fruit is GONE
- Berkeley Decision

# Background Overview 2020 - 2023



## 2011 CAP Implementation Status

National City Summary





# Background Overview 2020 - 2023



## Unique Profile

What makes National City unique?

- Vehicles Miles Traveled (VMT) Today and 2050
- Building Stock: Natural Gas vs. Electric

National City Base Year VMT Metrics

VMT Metric	Base Year (2012)		% of Regional Base Year (average)
	Region	National City	National City
VMT per capita	17.6	11.1	63.1%

VMT Impact Determination

VMT per capita	2050 Without Project	2050 With Project	Significant Impact?
National City	8.33	8.21	No
Regional	14.72	14.72	

# Strategies & Priorities

Detailed GHG Reduction



**Transportation**



**Commercial /  
Industrial  
Energy Use**



**Residential  
Energy Use**



**Solid Waste**



**Water and  
Wastewater**

# Strategies & Priorities Detailed GHG Reduction

## Transportation

**Objective**



Reduce Vehicle Miles Traveled

Encourage Clean Transportation

Promote Completion of Transportation Studies

Encourage Parking Restrictions and Prioritizations

Promote Vehicle and Driver Efficiency



# Strategies & Priorities

Detailed GHG Reduction

## Transportation

### Strategies

- Encourage high density and mixed-use development
- Reduce parking requirements
- Develop a Transportation Demand Management Plan
- Support San Diego Metropolitan Transit Service (MTS)
- Continue bicycle corridor improvements
- Improve access to bike share and electric scooters
- Increase commuter walking opportunities
- Identify gaps in existing pedestrian network and address improvement opportunities
- Identify gaps in existing pedestrian network and address improvement opportunities
- Incorporate the “Complete Streets” principal to capital projects and plans
- Implement strategies that prioritize parking for high occupancy vehicles
- Encourage employers to institute programs that provide financial incentives for commuters to reduce their vehicle trips
- Encourage employers to institute telework programs and alternative work schedules to reduce commuting during peak hours



# Strategies & Priorities Detailed GHG Reduction

## Commercial Energy Use

## Residential Energy Use

### Existing Stock

- Energy-efficiency upgrades/audits
- Energy financing program/retrofits

### New Development

- Exceed Calgreen/Incentives
- LEED certification
- CCE
- Restrict new natural gas connections
- Building electrification
- On-site renewables



# Strategies & Priorities Detailed GHG Reduction

## Solid Waste

## Water & Wastewater

### Strategies

- Greenwaste recycling
- Curbside composting

### Strategies

- Stormwater re-capture systems in capital projects
- Water financing program/efficiency retrofits



# What's Next?



**Monitoring**

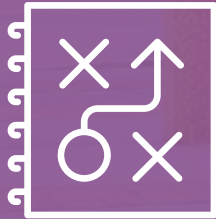


**Implementation**



**Continued Community  
Engagement**

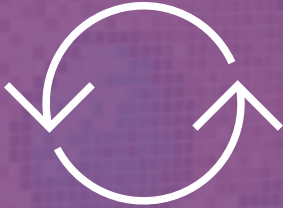
# In Summary



Aligns with FGPU  
Goals and Policies



Meets State 2030  
and 2050 Targets



CEQA Qualified for  
Future Streamlining



TOGETHER WE

**PLAN**

NATIONAL CITY

**Questions?**



# Mode Share Series 13 Regional Model



Agg Mode	Existing Adopted 2050		Preferred Alt 2050	
	Trips	Mode Share	Trips	Mode Share
Bike	2,489	0.42%	2,667	0.45%
HOV2	153,440	25.93%	154,282	25.76%
HOV3	89,982	15.21%	90,312	15.08%
Other	5,528	0.93%	5,726	0.96%
SOV	221,612	37.45%	223,940	37.39%
Transit	32,857	5.55%	33,704	5.63%
Walk	85,871	14.51%	88,375	14.75%



# Mode Share ACS: Means of Transportation to Work

Mode	United States	California	San Diego County	National City
Bicycle	0.5%	0.8%	0.6%	<b>0.7%</b>
Drove Alone Car, Truck, or Van	74.9%	72.1%	73.9%	<b>66.0%</b>
Carpool Car, Truck, or Van	8.9%	10.0%	8.7%	<b>15.5%</b>
Transit	4.6%	4.6%	2.6%	<b>5.1%</b>
Walked	2.6%	2.5%	2.9%	<b>7.0%</b>
Other Means	1.3%	1.6%	1.7%	<b>1.7%</b>
Worked at Home	7.3%	8.4%	9.6%	<b>4.1%</b>

Source: American Community Survey 2020 5-Year Estimates, Table S0801

