



**AGENDA OF A REGULAR MEETING
OF THE NATIONAL CITY
TRAFFIC SAFETY COMMITTEE**

WEDNESDAY, AUGUST 16, 2023 AT 1:00 P.M.

**CITY HALL
LARGE CONFERENCE ROOM
1243 NATIONAL CITY BOULEVARD
NATIONAL CITY, CA 91950**

- * CALL TO ORDER
- * PLEDGE OF ALLEGIANCE
- * ROLL CALL
- * APPROVAL OF THE MEETING MINUTES FROM JUNE 14, 2023

PUBLIC ORAL COMMUNICATION (Three-Minute Time Limit)

Note: Pursuant to State Law, items requiring Committee action must be brought back on a subsequent Committee agenda unless they are of a demonstrated emergency or urgent nature.

OLD BUSINESS

NONE

GENERAL INFORMATION

Upon request, this agenda can be made available in appropriate alternative formats to persons with a disability in compliance with the American with Disabilities Act. Please contact the City Clerk's Office at (619) 336-4228 to request a disability-related modification or accommodation. Notification 24-hours prior to the meeting will enable the City to make reasonable arrangements to ensure accessibility to this meeting.

NEW BUSINESS

1. ITEM NO. 2023-10

REQUEST FOR INSTALLATION OF A BLUE CURB DISABLED PERSONS PARKING SPACE WITH SIGNAGE IN FRONT OF THE RESIDENCE AT 507 F AVENUE

BY: WAYNE BORMANN

2. ITEM NO. 2023-11

REQUEST FOR INSTALLATION OF A BLUE CURB DISABLED PERSONS PARKING SPACE WITH SIGNAGE IN FRONT OF THE RESIDENCE AT 135 E. 6TH STREET

BY: VANESSA HURTADO

3. ITEM NO. 2023-12

REQUEST FOR INSTALLATION OF A BLUE CURB DISABLED PERSONS PARKING SPACE WITH SIGNAGE IN FRONT OF THE RESIDENCE AT 228 W. 15TH STREET #B

BY: GUADALUPE PAUDA-MARTINEZ

4. ITEM NO. 2023-13

REQUEST TO INSTALL TWO (2) LIMITED PARALLEL PARKING SPACES IN FRONT OF GRACIELA'S FAMILY CHILD CARE LOCATED AT 212 S KENTON AVENUE TO INCREASE PARKING TURNOVER FOR CUSTOMERS

BY: GRACIELA MORFIN

5. ITEM NO. 2023-14

ESTABLISHING SPEED LIMITS ON VARIOUS NATIONAL CITY ROADWAYS BASED ON CERTIFIED ENGINEERING AND TRAFFIC SURVEYS

BY: STAFF

GENERAL INFORMATION

Upon request, this agenda can be made available in appropriate alternative formats to persons with a disability in compliance with the American with Disabilities Act. Please contact the City Clerk's Office at (619) 336-4228 to request a disability-related modification or accommodation. Notification 24-hours prior to the meeting will enable the City to make reasonable arrangements to ensure accessibility to this meeting.

FUTURE ITEMS

1. Traffic Safety Committee Bylaws
2. Evaluation of the pedestrian enhancements for E. 8th Street and A Avenue and E. 8th Street and B Avenue

STAFF REPORTS

COMMITTEE MEMBER COMMENTS

ADJOURNMENT

GENERAL INFORMATION

Upon request, this agenda can be made available in appropriate alternative formats to persons with a disability in compliance with the American with Disabilities Act. Please contact the City Clerk's Office at (619) 336-4228 to request a disability-related modification or accommodation. Notification 24-hours prior to the meeting will enable the City to make reasonable arrangements to ensure accessibility to this meeting.

MINUTES of a REGULAR MEETING
of the NATIONAL CITY TRAFFIC
SAFETY COMMITTEE
WEDNESDAY, August 16, 2023 at 1:00 P.M.

I CALL TO ORDER

Committee Chairman Cynthia Fuller called the meeting of the Traffic Safety Committee to order at 1:09 p.m. on Wednesday, June 14, 2023, at CITY HALL, Large conference

II PLEDGE OF ALLEGIANCE

III ROLL CALL

Committee Members Present: Marisa Rosales, Kelly Piper, Cynthia Fuller Quinonez

Committee Members Absent: Chris Coyote

Officials Present: Luca Zappiello – Associate Civil Engineer; Ricardo Rodriguez – Assistant Civil Engineer, Evelyn Nunez- Executive Assistant.

IV APPROVAL OF THE MINUTES FROM June 14, 2022

Motion by Piper, 2nd by Rosales to approve the Minutes from the meeting of June 17, 2023

Carried by vote 3-0

V PUBLIC ORAL COMMUNICATION: (Three-Minute Time Limit)

Larry Emerson

Joan Rincon

Zachary Gomez

VI NEW BUSINESS

1. ITEM NO. 2023-07
REQUEST FOR INSTALLATION OF A BLUE CURB DISABLED PERSONS
PARKING SPACE WITH SIGNAGE IN FRONT OF THE RESIDENCE AT 117 E.
2ND STREET

BY: MARCO LOPEZ

Marco Lopez, was present to speak on behalf of this item.

Ricardo Rodriguez, Assistant Civil Engineer–, provided the staff report for this item.

Committee Members discussed the item. There was no public opposition to this item.

Action: Motion by Piper, 2nd by Rosales, to approve staff recommendation for installation of a blue curb disabled persons parking space with signage in front of the residence at 117 E. 2nd Street.

Carried by unanimous vote, 3-0.

2. ITEM NO. 2023-08
REQUEST FOR INSTALLATION OF A BLUE CURB DISABLED PERSONS
PARKING SPACE WITH SIGNAGE IN FRONT OF THE RESIDENCE AT 605 E.6TH
Street

BY: Ramon Camacho

Ramon Camacho, was present to speak on behalf of this item.

Ricardo Rodriguez, Assistant Civil Engineer, provided the staff report for this item.

Committee Members discussed the item. There was no public opposition to this item.

Action: Motion by Piper, 2nd by Rosales, to approve staff recommendation for installation of a blue curb disabled persons parking space with signage in front of the residence at 605 E.6th Street.

Carried by unanimous vote, 3-0

3. ITEM NO. 2023-09

REQUEST FOR INSTALLATION OF A BLUE CURB DISABLED PERSONS PARKING SPACE WITH SIGNAGE IN FRONT OF THE RESIDENCE AT 621 E. 16th Street

BY: Mario Marin

No one from the public was present to speak on behalf of this item.

Ricardo Rodriguez, Assistant Civil Engineer, provided the staff report for this item.

Committee Members discussed the item. There was no public opposition to this item.

Action: Motion by Coyote, 2nd by Rosales, to approve staff recommendation for installation of a blue curb disabled persons parking space with signage in front of the residence at 621 E. 16th Street

Carried by unanimous vote, 3-0

VII OLD BUSINESS

NONE

IX FUTURE ITEMS

1. Traffic Safety Committee Bylaws

X STAFF REPORTS

XI COMMITTEE MEMBER COMMENTS

- Per Piper request on update on Division St., report from the City of San Diego.
- Cynthia Fuller comments on new park on Division & Palm. Possibly can create increase in traffic.

XII ADJOURNMENT 2:16 P.M.

Action: Motion by Piper, 2nd by Rosales to adjourn to the next regularly scheduled Traffic Safety Committee meeting on August 16, 2023 at 1:00p.m at CITY HALL, Large conference room.

Carried by unanimous vote, 3-0

**NATIONAL CITY TRAFFIC SAFETY COMMITTEE
AGENDA REPORT FOR AUGUST 16, 2023**

ITEM NO. 2023-10

ITEM TITLE: REQUEST FOR INSTALLATION OF A BLUE CURB DISABLED PERSONS PARKING SPACE WITH SIGNAGE IN FRONT OF THE RESIDENCE AT 507 F AVENUE

PREPARED BY: Ricardo Rodriguez, Assistant Engineer – Civil Engineering & Public Works Department

DISCUSSION:

Mr. Wayne Bormann, resident of 507 F Avenue, has requested a blue curb disabled persons parking space in front of his residence. The resident possess a valid disabled persons placard from the California Department of Motor Vehicles. Mr. Bormann stated that since it is difficult for him to find parking in front of his residence he has to park his vehicle elsewhere. Mr. Bormann stated that a disabled persons parking space in front of his residence would provide easier access to his house.

Staff visited the site and observed that Mr. Bormann's residence does not have a garage or a driveway. Since there is no garage or driveway, the resident does not have accessible parking available on the property.

The City of National City has amended chapter 11.32.225 of the National City Municipal Code which is used to evaluate requests for disabled persons parking spaces. The City's Disabled persons parking zone requirements for Special Hardship Cases are as follows:

1. Applicant (or guardian) must be in possession of valid license plates or placard for "disabled persons" or "disabled veterans". *This condition is met.*
2. The proposed disabled parking space must be in front (or side if on a corner lot) of the applicant's (or guardian's) place of residence. *This condition is met.*
3. The residence must not have useable off-street parking available or an off-street space available that may be converted into disabled parking. *This condition is met.*

It shall be noted that disabled persons parking spaces do not constitute "personal reserved parking" and that any person with valid "disabled persons" license plates or placards may park in handicap spaces.

Please see attached exhibit for the location of existing blue curb disabled persons parking spaces within a 4-block radius from the proposed location for this request.

STAFF RECOMMENDATION:

Since all three conditions of the City's Disabled persons parking zone requirements for Special Hardship Cases are met, staff recommends the installation of a blue curb disabled persons parking space with signage in front of the residence at 507 F Avenue.

EXHIBITS:

1. Public Request Form
2. Location Map
3. Location Map showing existing blue curb parking spaces in the area
4. Photos
5. City Council Disabled Persons Parking Policy

2023-10



Request for Blue Curb Disabled Persons Parking Space

Name of Applicant: Wayne Borman

Name of Disabled Person (if different from above): _____

Address: 507 F. Ave National City CA 91950

Email: _____ Phone Number: 1

Please answer the following questions, which will assist Engineering Department Staff, the Traffic Safety Committee, and your City Council in determining if you are qualified to have a blue curb disabled persons parking space placed in front of your residence. Please be informed that all blue curb parking spaces are considered public parking. Therefore, any registered vehicle in possession of a disabled persons placard or license plate is legally allowed to park in the blue curb space for up to 72 continuous hours.

1. Do you possess a valid disabled person's placard issued by the California Department of Motor Vehicles (DMV)?

YES NO

If YES, please include a copy of the placard, which contains name, address, placard number, and expiration date along with this request form.

2. Does your residence have a garage?

YES NO

If answered YES, is the garage large enough to park a vehicle (minimum of 20' x 12')?

YES NO

3. Does your residence have a driveway?

YES NO

If answered YES, please refer to the following questions:

a. Is the driveway large enough to park a vehicle (minimum of 20' x 12')?

YES NO

b. Is the driveway level?

YES NO

c. Is the driveway sloped/inclined?

YES NO

Additional comments _____

PLEASE INSTALL HANDICAP PARKING IN FRONT OF
My Home.

I APPRECIATE YOUR HELP.

Engineering & Public Works Department

1243 National City Boulevard, National City, CA 91950-4301

619/336-4380 Fax 619/336-4397 www.nationalcityca.gov



CUSTOMER RECEIPT COPY

EXPIRES: 06/30/2025

*** D I S A B L E D P E R S O N P L A C A R D ***

PLACARD NUMBER: PIC: 1 TV: 91 DATE ISSUED: 07/31/23
MO/YR: EG
BORMANN WAYNE DT FEES RECVD: 07/31/23
507 F AVE

NATIONAL CITY
CA 91950
CO: 37



AMT DUE : NONE
AMT RECVD - CASH :
- CHCK :
- CRDT :

E10 669 E9 0000000 0002 CS E10 073123 N1 375264A

DEPARTMENT OF MOTOR VEHICLES PLACARD IDENTIFICATION CARD

THIS IDENTIFICATION CARD OR FACSIMILE COPY IS TO BE CARRIED BY THE PLACARD OWNER. PRESENT IT TO ANY PEACE OFFICER UPON DEMAND. IMMEDIATELY NOTIFY DMV BY PHONE OR MAIL OF ANY CHANGE OF ADDRESS. WHEN PARKING, HANG THE PLACARD FROM THE REAR VIEW MIRROR. REMOVE IT WHEN DRIVING.

PLACARD#: PLACARD HOLDER: BORMANN WAYNE
EXPIRES: 06/30/2025 507 F AVE
DOB:
ISSUED: 07/31/23
TYPE: N1 NATIONAL CITY
CA 91950

PURCHASE OF FUEL (BUSINESS & PROFESSIONS CODE 13660):
STATE LAW REQUIRES SERVICE STATIONS TO REFUEL A DISABLED PERSON'S VEHICLE AT SELF-SERVICE RATES, EXCEPT SELF-SERVICE FACILITIES WITH ONLY ONE CASHIER.

WHEN YOUR PLACARD IS PROPERLY DISPLAYED, YOU MAY PARK IN/ON:
*DISABLED PERSON PARKING SPACES (BLUE ZONES) *STREET METERED ZONES WITHOUT PAYING *GREEN ZONES WITHOUT RESTRICTIONS TO TIME LIMITS *STREET WHERE PREFERENTIAL PARKING PRIVILEGES ARE GIVEN TO RESIDENTS AND MERCHANTS.

YOU MAY NOT PARK IN/ON: *RED ZONES *TOW AWAY ZONES *WHITE OR YELLOW ZONES *SPACES MARKED BY CROSSHATCH LINES NEXT TO DISABLED PERSON PARKING SPACES.

IT IS CONSIDERED MISUSE: *TO DISPLAY A PLACARD UNLESS THE DISABLED OWNER IS BEING TRANSPORTED *TO DISPLAY A PLACARD WHICH HAS BEEN CANCELLED OR REVOKED *TO LOAN YOUR PLACARD TO ANYONE, INCLUDING FAMILY MEMBERS. MISUSE IS A MISDEMEANOR (SECTION 4461VC) AND CAN RESULT IN CANCELLATION OR REVOCATION OF THE PLACARD. LOSS OF PARKING PRIVILEGES, AND/OR FINES.

Exhibit A: Location Map with Recommended Enhancements (TSC Item: 2023-10)

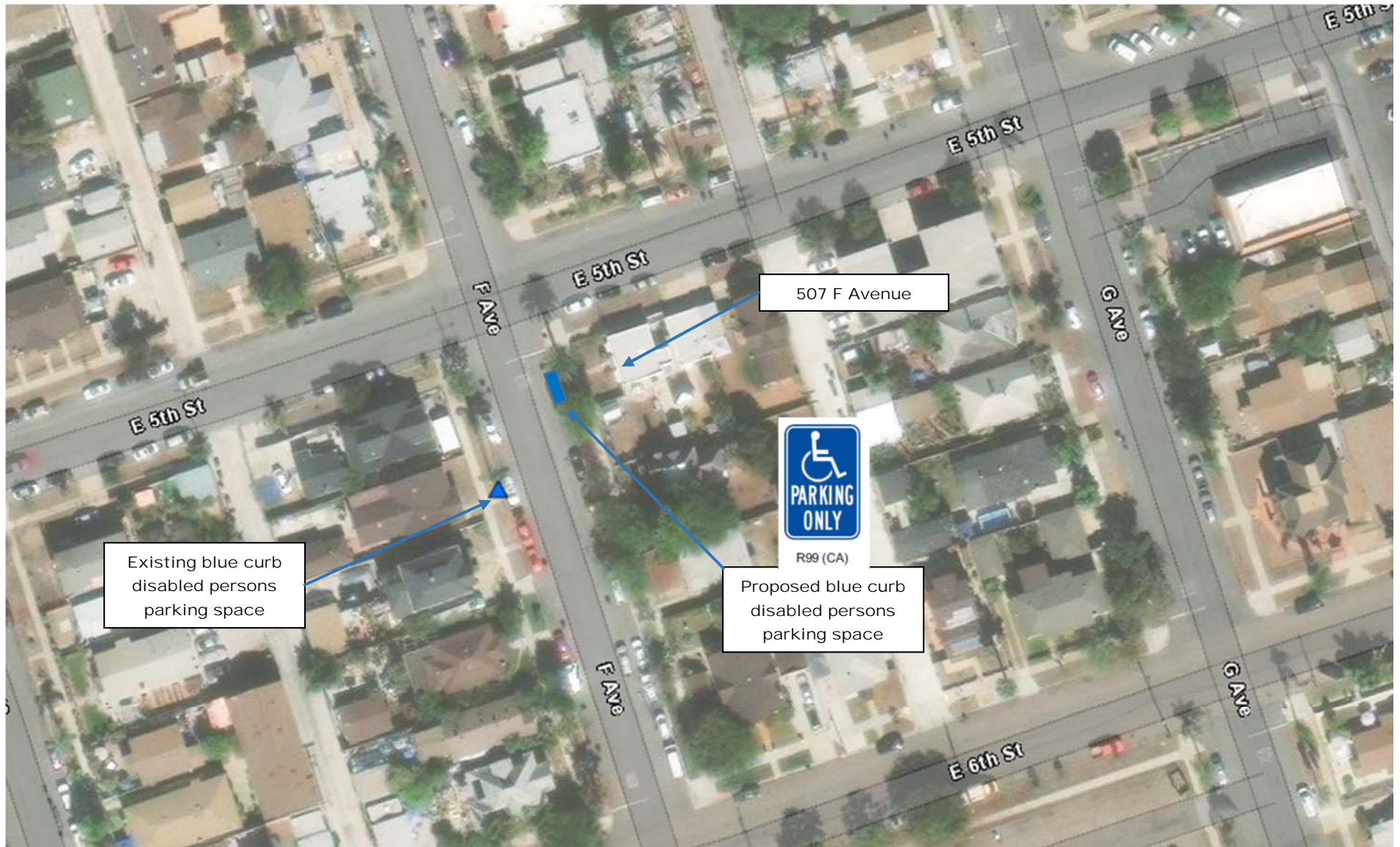


Exhibit B: Location Map Showing Existing Blue Curb Parking Space (TSC Item: 2023-10)





Photo of residence at 507 F Avenue (Looking East)



Location of proposed blue curb disabled persons parking space in front of 507 F Avenue (Looking East)

-
4. Green means no stopping, standing or parking for longer than fifteen or thirty minutes, as marked or signed, at any time between seven a.m. and six p.m. of any day except Sundays and holidays, unless otherwise indicated on postage signage.
 5. Blue means parking reserved exclusively for disabled persons. Vehicles must display either a distinguishing license plate or placard issued pursuant to CVC Section 22511.5.B. When the Director of Public Works, as authorized under this title, has caused curb markings to be placed, no person shall stop, stand or park a vehicle adjacent to any such legible curb marking in violation of any of the provisions of this section, and it is unlawful for any person not duly authorized, to paint or cause said curbs to be painted.
- (Ord. 827 § 71, 1951)

11.32.200 Loading permitted—Effect.

- A. Permission herein granted to stop or stand a vehicle for purposes of loading or unloading of materials applies only to commercial vehicles and shall not extend beyond the time necessary therefor, and in no event for more than twenty minutes.
- B. The loading or unloading of materials applies only to commercial deliveries, and the delivery or pickup of express and parcel post packages and United States mail.
- C. Permission herein granted to stop or park for purposes of loading or unloading passengers includes the loading or unloading of personal baggage but shall not extend beyond the time necessary therefor, and in no event for more than three minutes.
- D. Within the total time limits above specified the provisions of this section shall be enforced so as to accommodate necessary and reasonable loading or unloading but without permitting abuse of the privileges hereby granted.

(Ord. 827 § 72, 1951)

11.32.210 Loading zone—Restrictions.

No person shall stop, stand or park a vehicle in any yellow loading zone for any purpose other than loading or unloading passengers or material for such time as is permitted in Section 11.32.200.

(Ord. 827 § 73, 1951)

11.32.220 Passenger loading zone—Restrictions.

No person shall stop, stand or park a vehicle in any passenger loading zone for any purpose other than the loading or unloading of passengers for such time as is specified in Section 11.32.200.

(Ord. 827 § 74, 1951)

11.32.225 Disabled persons parking zone—Authority—Designation.

- A. The City Engineer is authorized to designate specially marked and posted on-street parking spaces for disabled persons pursuant to CVC 21101, et seq. at the following facilities:
 1. Government Buildings serving the public such as administration buildings, public employment offices, public libraries, police stations, etc.
 2. Hospitals and convalescent homes with more than 75-bed capacity.
 3. Medical facilities and doctors' offices staffed by a maximum of five practitioners. Zones shall be located to serve a maximum number of facilities on one block.
 4. Community service facilities such as senior citizens service centers, etc.

-
5. Accredited vocational training and educational facilities where no off- street parking is provided for disabled persons.
 6. Employment offices for major enterprises employing more than 200 persons.
 7. Public recreational facilities including municipal swimming pools, recreation halls, museums, etc.
 8. Public theaters, auditoriums, meeting halls, arenas, stadiums with more than 300 seating capacity.
 9. Other places of assembly such as schools and churches.
 10. Commercial and/or office building(s) with an aggregate of more than 50,000 square feet of usable floor space. Zone shall be located to serve a maximum number of facilities on one block.
 11. Hotels catering to daily guests, maintaining a ground floor lobby and a switchboard that is operated 24 hours per day.
 12. A hotel or apartment house catering to weekly or monthly guests and containing more than 30 separate living units.

B. General requirements.

1. Each disabled persons parking space shall be indicated by blue paint and a sign (white on blue) showing the international symbol of accessibility (a profile view of a wheelchair with occupant).
2. Where installed under the above criteria the total number of disabled persons curb parking spaces will be limited to 4% of the total number of on-street parking spaces available in the area and shall be distributed uniformly within the area.
3. Disabled persons parking will not be installed at locations with a full-time parking prohibition. When a disabled persons parking zone is installed where a part-time parking prohibition is in effect, the disabled persons parking zone will have the same time restrictions as the part-time parking prohibition.
4. The cost of installing disabled persons parking, not initiated by public request, will be assumed by the City on public streets and public off-street parking facilities.
5. In establishing on-street parking facilities for the disabled there shall be a reasonable determination made that the need is of an on-going nature. The intent is to prevent the proliferation of special parking stalls that may be installed for a short-term purpose but later are seldom used. Unjustified installation of such parking stalls unnecessarily increases the City's maintenance and operations costs, reduce available on- street parking for the general public, and detract from the overall effectiveness of the disabled persons parking program.
6. Applicant pays a one-time fee as determined by the City Engineer for recoverable costs related to installation and maintenance.

C. Special Hardship Cases.

1. It is not the intention of the City to provide personal reserved parking on the public right-of-way, especially in residential areas. However, exceptions may be made, in special hardship cases, provided all of the following conditions exists:
 - a. Applicant (or guardian) must be in possession of valid license plates for "disabled persons" or "disabled veterans."
 - b. The proposed disabled parking space must be in front of the applicant's (or guardian's) place of residence.
 - c. Subject residence must not have useable off-street parking available or off-street space available that may be converted into disabled parking.

**NATIONAL CITY TRAFFIC SAFETY COMMITTEE
AGENDA REPORT FOR AUGUST 16, 2023**

ITEM NO. 2023-11

ITEM TITLE: REQUEST FOR INSTALLATION OF A BLUE CURB DISABLED PERSONS PARKING SPACE WITH SIGNAGE IN FRONT OF THE RESIDENCE AT 135 E. 6TH STREET

PREPARED BY: Ricardo Rodriguez, Assistant Engineer – Civil Engineering & Public Works Department

DISCUSSION:

Mrs. Vanessa Hurtado, resident of 135 E. 6th Street, has requested a blue curb disabled persons parking space in front of her residence. The resident possess a valid disabled persons placard from the California Department of Motor Vehicles. Mrs. Hurtado stated that since it is difficult for her to find parking in front of her residence she has to park her vehicle 2-3 blocks away. Mrs. Hurtado stated that a disabled persons parking space in front of her residence would provide easier access to her house.

Staff visited the site and observed that Mrs. Hurtado's residence does not have a garage or a driveway. Since there is no garage or driveway, the resident does not have accessible parking available on the property.

The City of National City has amended chapter 11.32.225 of the National City Municipal Code which is used to evaluate requests for disabled persons parking spaces. The City's Disabled persons parking zone requirements for Special Hardship Cases are as follows:

1. Applicant (or guardian) must be in possession of valid license plates or placard for "disabled persons" or "disabled veterans". *This condition is met.*
2. The proposed disabled parking space must be in front (or side if on a corner lot) of the applicant's (or guardian's) place of residence. *This condition is met.*
3. The residence must not have useable off-street parking available or an off-street space available that may be converted into disabled parking. *This condition is met.*

It shall be noted that disabled persons parking spaces do not constitute "personal reserved parking" and that any person with valid "disabled persons" license plates or placards may park in handicap spaces.

Please see attached exhibit for the location of existing blue curb disabled persons parking spaces within a 4-block radius from the proposed location for this request.

STAFF RECOMMENDATION:

Since all three conditions of the City's Disabled persons parking zone requirements for Special Hardship Cases are met, staff recommends the installation of a blue curb disabled persons parking space with signage in front of the residence at 135 E. 6th Street.

EXHIBITS:

1. Public Request Form
2. Location Map
3. Location Map showing existing blue curb parking spaces in the area
4. Photos
5. City Council Disabled Persons Parking Policy

2023-10

REQUEST FOR BLUE CURB DISABLED PERSONS PARKING SPACE

NAME OF DISABLED PERSON: VANESSA HURTADO

NAME OF REPRESENTATIVE FOR DISABLED PERSON (if different from above):

ADDRESS: 135 E 6TH STREET, NATIONAL CITY, CA, 91950

EMAIL: _____

PHONE NUMBER: _____

Please answer the following questions, which will assist Engineering staff, the Traffic Safety Committee, and your City Council in determining if you are qualified to have a blue curb disabled persons parking space placed in front of your residence. Please be informed that all blue curb parking spaces are considered public parking. Therefore, any registered vehicle in possession of a disabled persons placard or license plate is legally allowed to park in the blue curb space for up to 72 continuous hours.

1) Do you possess a valid disabled person's placard issued by the California Department of Motor Vehicles (DMV)? YES NO
If YES, please include a copy of the placard, which contains your name, address, placard number, and expiration date.

2) Does your residence have a garage? YES NO
If YES, is the garage large enough to park a vehicle (minimum of 20' x 12') YES NO

3) Does your residence have a driveway? YES NO
If YES, a) Is the driveway large enough to park a vehicle? YES NO
(minimum of 20' x 12')
b) Is the driveway level? YES NO
c) Is the driveway sloped/inclined? YES NO

4) Please write any additional comments here (optional).
STRUGGLE WITH PARKING IN THE AFTERNOON
AFTER 5pm Really need disable parking
Please have to park 2-3 block away

CUSTOMER RECEIPT COPY

EXPIRES: 06/30/2025

*** D I S A B L E D P E R S O N P L A C A R D ***

PLACARD NUMBER: PIC: 1 TV: 92 DATE ISSUED: 07/28/23
MO/YR: EG

HURTADO VANESSA
135 EAST 6TH STREET

DT FEES RECVD: 07/28/23

NATIONAL CITY
CA 91950

AMT DUE : NONE
AMT RECVD - CASH :
- CHCK :
- CRDT :

CO: 37

H00 613 24 0000000 0006 CS H00 072823 N1 585559F

DEPARTMENT OF MOTOR VEHICLES PLACARD IDENTIFICATION CARD

THIS IDENTIFICATION CARD OR FACSIMILE COPY IS TO BE CARRIED BY THE PLACARD OWNER. PRESENT IT TO ANY PEACE OFFICER UPON DEMAND. IMMEDIATELY NOTIFY DMV BY PHONE OR MAIL OF ANY CHANGE OF ADDRESS. WHEN PARKING, HANG THE PLACARD FROM THE REAR VIEW MIRROR. REMOVE IT WHEN DRIVING.

PLACARD#: PLACARD HOLDER: HURTADO VANESSA
EXPIRES: 06/30/2025 135 EAST 6TH STREET
DOB:
ISSUED: 07/28/23
TYPE: N1 NATIONAL CITY
CA 91950

PURCHASE OF FUEL (BUSINESS & PROFESSIONS CODE 13660):
STATE LAW REQUIRES SERVICE STATIONS TO REFUEL A DISABLED PERSON'S VEHICLE AT SELF-SERVICE RATES, EXCEPT SELF-SERVICE FACILITIES WITH ONLY ONE CASHIER.

WHEN YOUR PLACARD IS PROPERLY DISPLAYED, YOU MAY PARK IN/ON:
*DISABLED PERSON PARKING SPACES (BLUE ZONES) *STREET METERED ZONES WITHOUT PAYING *GREEN ZONES WITHOUT RESTRICTIONS TO TIME LIMITS *STREET WHERE PREFERENTIAL PARKING PRIVILEGES ARE GIVEN TO RESIDENTS AND MERCHANTS.

YOU MAY NOT PARK IN/ON: *RED ZONES *TOW AWAY ZONES *WHITE OR YELLOW ZONES *SPACES MARKED BY CROSSHATCH LINES NEXT TO DISABLED PERSON PARKING SPACES.

IT IS CONSIDERED MISUSE: *TO DISPLAY A PLACARD UNLESS THE DISABLED OWNER IS BEING TRANSPORTED *TO DISPLAY A PLACARD WHICH HAS BEEN CANCELLED OR REVOKED *TO LOAN YOUR PLACARD TO ANYONE, INCLUDING FAMILY MEMBERS. MISUSE IS A MISDEMEANOR (SECTION 4461VC) AND CAN RESULT IN CANCELLATION OR REVOCATION OF THE PLACARD, LOSS OF PARKING PRIVILEGES, AND/OR FINES.

Exhibit A: Location Map with Recommended Enhancements (TSC Item: 2023-11)



Exhibit B: Location Map Showing Existing Blue Curb Parking Space (TSC Item: 2023-11)





Photo of residence at 135 E. 6th Street (Looking North)



Location of proposed blue curb disabled persons parking space in front of 135 E. 6th Street (Looking North)

-
4. Green means no stopping, standing or parking for longer than fifteen or thirty minutes, as marked or signed, at any time between seven a.m. and six p.m. of any day except Sundays and holidays, unless otherwise indicated on postage signage.
 5. Blue means parking reserved exclusively for disabled persons. Vehicles must display either a distinguishing license plate or placard issued pursuant to CVC Section 22511.5.B. When the Director of Public Works, as authorized under this title, has caused curb markings to be placed, no person shall stop, stand or park a vehicle adjacent to any such legible curb marking in violation of any of the provisions of this section, and it is unlawful for any person not duly authorized, to paint or cause said curbs to be painted.
- (Ord. 827 § 71, 1951)

11.32.200 Loading permitted—Effect.

- A. Permission herein granted to stop or stand a vehicle for purposes of loading or unloading of materials applies only to commercial vehicles and shall not extend beyond the time necessary therefor, and in no event for more than twenty minutes.
- B. The loading or unloading of materials applies only to commercial deliveries, and the delivery or pickup of express and parcel post packages and United States mail.
- C. Permission herein granted to stop or park for purposes of loading or unloading passengers includes the loading or unloading of personal baggage but shall not extend beyond the time necessary therefor, and in no event for more than three minutes.
- D. Within the total time limits above specified the provisions of this section shall be enforced so as to accommodate necessary and reasonable loading or unloading but without permitting abuse of the privileges hereby granted.

(Ord. 827 § 72, 1951)

11.32.210 Loading zone—Restrictions.

No person shall stop, stand or park a vehicle in any yellow loading zone for any purpose other than loading or unloading passengers or material for such time as is permitted in Section 11.32.200.

(Ord. 827 § 73, 1951)

11.32.220 Passenger loading zone—Restrictions.

No person shall stop, stand or park a vehicle in any passenger loading zone for any purpose other than the loading or unloading of passengers for such time as is specified in Section 11.32.200.

(Ord. 827 § 74, 1951)

11.32.225 Disabled persons parking zone—Authority—Designation.

- A. The City Engineer is authorized to designate specially marked and posted on-street parking spaces for disabled persons pursuant to CVC 21101, et seq. at the following facilities:
 1. Government Buildings serving the public such as administration buildings, public employment offices, public libraries, police stations, etc.
 2. Hospitals and convalescent homes with more than 75-bed capacity.
 3. Medical facilities and doctors' offices staffed by a maximum of five practitioners. Zones shall be located to serve a maximum number of facilities on one block.
 4. Community service facilities such as senior citizens service centers, etc.

-
5. Accredited vocational training and educational facilities where no off- street parking is provided for disabled persons.
 6. Employment offices for major enterprises employing more than 200 persons.
 7. Public recreational facilities including municipal swimming pools, recreation halls, museums, etc.
 8. Public theaters, auditoriums, meeting halls, arenas, stadiums with more than 300 seating capacity.
 9. Other places of assembly such as schools and churches.
 10. Commercial and/or office building(s) with an aggregate of more than 50,000 square feet of usable floor space. Zone shall be located to serve a maximum number of facilities on one block.
 11. Hotels catering to daily guests, maintaining a ground floor lobby and a switchboard that is operated 24 hours per day.
 12. A hotel or apartment house catering to weekly or monthly guests and containing more than 30 separate living units.

B. General requirements.

1. Each disabled persons parking space shall be indicated by blue paint and a sign (white on blue) showing the international symbol of accessibility (a profile view of a wheelchair with occupant).
2. Where installed under the above criteria the total number of disabled persons curb parking spaces will be limited to 4% of the total number of on-street parking spaces available in the area and shall be distributed uniformly within the area.
3. Disabled persons parking will not be installed at locations with a full-time parking prohibition. When a disabled persons parking zone is installed where a part-time parking prohibition is in effect, the disabled persons parking zone will have the same time restrictions as the part-time parking prohibition.
4. The cost of installing disabled persons parking, not initiated by public request, will be assumed by the City on public streets and public off-street parking facilities.
5. In establishing on-street parking facilities for the disabled there shall be a reasonable determination made that the need is of an on-going nature. The intent is to prevent the proliferation of special parking stalls that may be installed for a short-term purpose but later are seldom used. Unjustified installation of such parking stalls unnecessarily increases the City's maintenance and operations costs, reduce available on- street parking for the general public, and detract from the overall effectiveness of the disabled persons parking program.
6. Applicant pays a one-time fee as determined by the City Engineer for recoverable costs related to installation and maintenance.

C. Special Hardship Cases.

1. It is not the intention of the City to provide personal reserved parking on the public right-of-way, especially in residential areas. However, exceptions may be made, in special hardship cases, provided all of the following conditions exists:
 - a. Applicant (or guardian) must be in possession of valid license plates for "disabled persons" or "disabled veterans."
 - b. The proposed disabled parking space must be in front of the applicant's (or guardian's) place of residence.
 - c. Subject residence must not have useable off-street parking available or off-street space available that may be converted into disabled parking.

**NATIONAL CITY TRAFFIC SAFETY COMMITTEE
AGENDA REPORT FOR AUGUST 16, 2023**

ITEM NO. 2023-12

ITEM TITLE: REQUEST FOR INSTALLATION OF A BLUE CURB DISABLED PERSONS PARKING SPACE WITH SIGNAGE IN FRONT OF THE RESIDENCE AT 228 W. 15TH STREET #B

PREPARED BY: Ricardo Rodriguez, Assistant Engineer – Civil Engineering & Public Works Department

DISCUSSION:

Mrs. Guadalupe Pauda-Martinez, resident of 228 W. 15th Street #B, has requested a blue curb disabled persons parking space in front of her residence. The resident possess a valid disabled persons placard from the California Department of Motor Vehicles. Mrs. Pauda-Martinez stated that since it is difficult for her to find parking in front of her residence she has to park her vehicle elsewhere. Mrs. Pauda-Martinez stated that a disabled persons parking space as close as possible to her residence would provide easier access to her house.

Staff visited the site and observed that Mrs. Pauda-Martinez's residence does not have a garage but does have a driveway. The driveway on the east is approximately 31 feet long by 8.5 feet wide with negligible slope and the driveway on the west is approximately 30 feet long by 15 feet wide. The minimum dimensions for a driveway to accommodate a vehicle with a disabled driver or passenger is 20 feet long by 12 feet wide. Only one driveway is big enough to accommodate one disabled vehicle in a property with 3 residences.

The City of National City has amended chapter 11.32.225 of the National City Municipal Code which is used to evaluate requests for disabled persons parking spaces. The City's Disabled persons parking zone requirements for Special Hardship Cases are as follows:

1. Applicant (or guardian) must be in possession of valid license plates or placard for "disabled persons" or "disabled veterans". *This condition is met.*
2. The proposed disabled parking space must be in front (or side if on a corner lot) of the applicant's (or guardian's) place of residence. *This condition is not met.*
3. The residence must not have useable off-street parking available or an off-street space available that may be converted into disabled parking. *This condition is not met.*

It shall be noted that disabled persons parking spaces do not constitute "personal reserved parking" and that any person with valid "disabled persons" license plates or placards may park in handicap spaces.

Please see attached exhibit for the location of existing blue curb disabled persons parking spaces within a 4-block radius from the proposed location for this request.

STAFF RECOMMENDATION:

Since only one condition of the City's Disabled persons parking zone requirements for Special Hardship Cases is met, staff does not recommend the installation of a blue curb disabled persons parking space with signage.

EXHIBITS:

1. Public Request Form
2. Location Map
3. Location Map showing existing blue curb parking spaces in the area
4. Photos
5. City Council Disabled Persons Parking Policy

2023-10



Request for Blue Curb Disabled Persons Parking Space

Name of Applicant: Guadalupe pauda martinez

Name of Disabled Person (if different from above): _____

Address: 228 west 15 street # B national city ca 91950

Email: _____ Phone Number: _____

Please answer the following questions, which will assist Engineering Department Staff, the Traffic Safety Committee, and your City Council in determining if you are qualified to have a blue curb disabled persons parking space placed in front of your residence. Please be informed that all blue curb parking spaces are considered public parking. Therefore, any registered vehicle in possession of a disabled persons placard or license plate is legally allowed to park in the blue curb space for up to 72 continuous hours.

1. Do you possess a valid disabled person's placard issued by the California Department of Motor Vehicles (DMV)?

YES NO

If YES, please include a copy of the placard, which contains name, address, placard number, and expiration date along with this request form.

2. Does your residence have a garage?

YES NO

If answered YES, is the garage large enough to park a vehicle (minimum of 20' x 12')?

YES NO

3. Does your residence have a driveway?

YES NO

If answered YES, please refer to the following questions:

a. Is the driveway large enough to park a vehicle (minimum of 20' x 12')?

YES NO

b. Is the driveway level?

YES NO

c. Is the driveway sloped/inclined?

YES NO

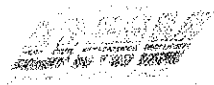
Additional comments _____

Engineering & Public Works Department

1243 National City Boulevard, National City, CA 91950-4301

619/336-4380 Fax 619/336-4397 www.nationalcityca.gov

PLEASE CHECK THE
CLOSED CAPS
THEY DO NOT
MIRROR



EXPIRES: 06/30/2025

CUSTOMER RECEIPT COPY

*** DISABLED PERSON PLACARD ***

FLACARD NUMBER: [] PIC: 1 TV: 91 DATE ISSUED: 05/04/23
MO/YR: EE

PAUDAMARTINEZ GUADALUPE
228 WEST 15 ST B

DT FEES RECVD: 05/04/23

NATIONAL CITY
CA 91950
CO: 37



AMT DUE : NONE
AMT RECVD - CASH :
- CHCK :
- CRDT :

E10 613 26 0000000 0008 CS E10 050423 N1 235717A

DEPARTMENT OF MOTOR VEHICLES PLACARD IDENTIFICATION CARD

THIS IDENTIFICATION CARD OR FACSIMILE COPY IS TO BE CARRIED BY THE PLACARD OWNER. PRESENT IT TO ANY PEACE OFFICER UPON DEMAND. IMMEDIATELY NOTIFY DMV BY PHONE OR MAIL OF ANY CHANGE OF ADDRESS. WHEN PARKING, HANG THE PLACARD FROM THE REAR VIEW MIRROR. REMOVE IT WHEN DRIVING.

A Public Service Agency

PLACARD#: [] PLACARD HOLDER: PAUDAMARTINEZ GUADALUPE
EXPIRES: 06/30/2025 228 WEST 15 ST B
DOB: []
ISSUED: 05/04/23
TYPE: N1 NATIONAL CITY
CA 91950

PURCHASE OF FUEL (BUSINESS & PROFESSIONS CODE 13660):
STATE LAW REQUIRES SERVICE STATIONS TO REFUEL A DISABLED PERSON'S VEHICLE AT SELF-SERVICE RATES, EXCEPT SELF-SERVICE FACILITIES WITH ONLY ONE CASHIER.

WHEN YOUR PLACARD IS PROPERLY DISPLAYED, YOU MAY PARK IN/ON:
*DISABLED PERSON PARKING SPACES (BLUE ZONES) *STREET METERED ZONES WITHOUT PAYING *GREEN ZONES WITHOUT RESTRICTIONS TO TIME LIMITS *STREET WHERE PREFERENTIAL PARKING PRIVILEGES ARE GIVEN TO RESIDENTS AND MERCHANTS.

YOU MAY NOT PARK IN/ON: *RED ZONES *TOW-AWAY ZONES *WHITE OR YELLOW ZONES *SPACES MARKED BY CROSSHATCH LINES NEXT TO DISABLED PERSON PARKING SPACES.

IT IS CONSIDERED MISUSE: *TO DISPLAY A PLACARD UNLESS THE DISABLED OWNER IS BEING TRANSPORTED *TO DISPLAY A PLACARD WHICH HAS BEEN CANCELLED OR REVOKED *TO LOAN YOUR PLACARD TO ANYONE, INCLUDING FAMILY MEMBERS. MISUSE IS A MISDEMEANOR (SECTION 4461VC) AND CAN RESULT IN CANCELLATION OR REVOCATION OF THE PLACARD, LOSS OF PARKING PRIVILEGES, AND/OR FINES.

Exhibit A: Location Map with Possible Enhancements (TSC Item: 2023-12)



Exhibit B: Location Map Showing Existing Blue Curb Parking Space (TSC Item: 2023-12)





Photo of residence at 228 W. 15th Street #B (Looking South)



Photo of property driveways at 228 W. 15th Street (Looking South)



Photos of property driveways at 228 W. 15th Street (Looking South)



Possible location of blue curb disabled persons parking space in front of 1508 Hoover Ave (Looking South)

-
4. Green means no stopping, standing or parking for longer than fifteen or thirty minutes, as marked or signed, at any time between seven a.m. and six p.m. of any day except Sundays and holidays, unless otherwise indicated on postage signage.
 5. Blue means parking reserved exclusively for disabled persons. Vehicles must display either a distinguishing license plate or placard issued pursuant to CVC Section 22511.5.B. When the Director of Public Works, as authorized under this title, has caused curb markings to be placed, no person shall stop, stand or park a vehicle adjacent to any such legible curb marking in violation of any of the provisions of this section, and it is unlawful for any person not duly authorized, to paint or cause said curbs to be painted.
- (Ord. 827 § 71, 1951)

11.32.200 Loading permitted—Effect.

- A. Permission herein granted to stop or stand a vehicle for purposes of loading or unloading of materials applies only to commercial vehicles and shall not extend beyond the time necessary therefor, and in no event for more than twenty minutes.
- B. The loading or unloading of materials applies only to commercial deliveries, and the delivery or pickup of express and parcel post packages and United States mail.
- C. Permission herein granted to stop or park for purposes of loading or unloading passengers includes the loading or unloading of personal baggage but shall not extend beyond the time necessary therefor, and in no event for more than three minutes.
- D. Within the total time limits above specified the provisions of this section shall be enforced so as to accommodate necessary and reasonable loading or unloading but without permitting abuse of the privileges hereby granted.

(Ord. 827 § 72, 1951)

11.32.210 Loading zone—Restrictions.

No person shall stop, stand or park a vehicle in any yellow loading zone for any purpose other than loading or unloading passengers or material for such time as is permitted in Section 11.32.200.

(Ord. 827 § 73, 1951)

11.32.220 Passenger loading zone—Restrictions.

No person shall stop, stand or park a vehicle in any passenger loading zone for any purpose other than the loading or unloading of passengers for such time as is specified in Section 11.32.200.

(Ord. 827 § 74, 1951)

11.32.225 Disabled persons parking zone—Authority—Designation.

- A. The City Engineer is authorized to designate specially marked and posted on-street parking spaces for disabled persons pursuant to CVC 21101, et seq. at the following facilities:
 1. Government Buildings serving the public such as administration buildings, public employment offices, public libraries, police stations, etc.
 2. Hospitals and convalescent homes with more than 75-bed capacity.
 3. Medical facilities and doctors' offices staffed by a maximum of five practitioners. Zones shall be located to serve a maximum number of facilities on one block.
 4. Community service facilities such as senior citizens service centers, etc.

-
5. Accredited vocational training and educational facilities where no off- street parking is provided for disabled persons.
 6. Employment offices for major enterprises employing more than 200 persons.
 7. Public recreational facilities including municipal swimming pools, recreation halls, museums, etc.
 8. Public theaters, auditoriums, meeting halls, arenas, stadiums with more than 300 seating capacity.
 9. Other places of assembly such as schools and churches.
 10. Commercial and/or office building(s) with an aggregate of more than 50,000 square feet of usable floor space. Zone shall be located to serve a maximum number of facilities on one block.
 11. Hotels catering to daily guests, maintaining a ground floor lobby and a switchboard that is operated 24 hours per day.
 12. A hotel or apartment house catering to weekly or monthly guests and containing more than 30 separate living units.

B. General requirements.

1. Each disabled persons parking space shall be indicated by blue paint and a sign (white on blue) showing the international symbol of accessibility (a profile view of a wheelchair with occupant).
2. Where installed under the above criteria the total number of disabled persons curb parking spaces will be limited to 4% of the total number of on-street parking spaces available in the area and shall be distributed uniformly within the area.
3. Disabled persons parking will not be installed at locations with a full-time parking prohibition. When a disabled persons parking zone is installed where a part-time parking prohibition is in effect, the disabled persons parking zone will have the same time restrictions as the part-time parking prohibition.
4. The cost of installing disabled persons parking, not initiated by public request, will be assumed by the City on public streets and public off-street parking facilities.
5. In establishing on-street parking facilities for the disabled there shall be a reasonable determination made that the need is of an on-going nature. The intent is to prevent the proliferation of special parking stalls that may be installed for a short-term purpose but later are seldom used. Unjustified installation of such parking stalls unnecessarily increases the City's maintenance and operations costs, reduce available on- street parking for the general public, and detract from the overall effectiveness of the disabled persons parking program.
6. Applicant pays a one-time fee as determined by the City Engineer for recoverable costs related to installation and maintenance.

C. Special Hardship Cases.

1. It is not the intention of the City to provide personal reserved parking on the public right-of-way, especially in residential areas. However, exceptions may be made, in special hardship cases, provided all of the following conditions exists:
 - a. Applicant (or guardian) must be in possession of valid license plates for "disabled persons" or "disabled veterans."
 - b. The proposed disabled parking space must be in front of the applicant's (or guardian's) place of residence.
 - c. Subject residence must not have useable off-street parking available or off-street space available that may be converted into disabled parking.

**NATIONAL CITY TRAFFIC SAFETY COMMITTEE
AGENDA REPORT FOR AUGUST 16, 2023**

ITEM NO. 2023-13

ITEM TITLE: REQUEST TO INSTALL TWO (2) LIMITED PARALLEL PARKING SPACES IN FRONT OF GRACIELA'S FAMILY CHILD CARE LOCATED AT 212 S KENTON AVENUE TO INCREASE PARKING TURNOVER FOR CUSTOMERS

PREPARED BY: Luca Zappiello, Associate Engineer - Civil Engineering & Public Works Department

DISCUSSION:

Mrs. Graciela Morfin, owner and program director of Graciela's Family Child Care (Child Care), located at 212 South Kenton Avenue, has requested the installation of two limited parking spaces in front of her property. Mrs. Morfin stated that the two unrestricted parking spaces currently located in front of her property are frequently occupied by vehicles all day and parents temporarily park their vehicles in the middle of the road in order to drop off or pick up their kids from the Child Care. Mrs. Morfin also stated that installing two limited parking spaces in front of her property will allow the parents to safely drop off and pick up their kids. Mrs. Morfin stated that the Child Care hours are 24 hours a day, Monday to Saturday.

Staff visited the site and confirmed that the Child Care is located in a residential area. The 200 block South Kenton Avenue is a 2-lane local roadway with parallel unrestricted parking on both sides of the street. Staff confirmed that the Child Care has a driveway that can accommodate one vehicle. In addition, staff confirmed that there is a manual gate located at the driveway. During the site visit, it was noted that most of the parallel unrestricted parking spaces around the property were occupied by vehicles. Based on staff's due diligence, it was determined that the Child Care hours are 6 a.m. to 6 p.m., Monday through Friday.

If the request receives final approval, the staff recommends requiring the resident to pay for the work performed by Public Works since it will benefit the single business.

STAFF RECOMMENDATION:

Staff defers to the Traffic Safety Committee for the recommendation to install two limited parking spaces in front of Mrs. Morfin's property during the Graciela's Family Child Care hours.

The Traffic Safety Committee would need to define the type of signage ("Passenger Loading Zone/ three minutes parking" or longer) and the time when the signage is valid.

EXHIBITS:

1. Public Request
2. Public Notice
3. Location Map
4. Photos

Luca Zappiello

From: Esmeralda M <cbcesmeralda@hotmail.com>
Sent: Monday, July 31, 2023 4:59 PM
To: ricardor@mationalcityca.gov
Cc: Luca Zappiello
Subject: Gracielas Family Child Care

CAUTION: This email originated from outside your organization. Exercise caution when opening attachments or clicking links, especially from unknown senders.

Hola
Estoy haciendo esta petición para poder tener estos dos espacios libres enfrente de mi casa, 212 S Kenton Ave National City Ca 91950, de qué otras personas estacionen aquí porque tengo una guardería y trabajo de lunes a sábado y mis horarios son 24 horas al día por favor ayúdame con esto porque mis padres corren peligro a estacionarse a la mitad de la calle cuando no hay lugar para estacionarse con sus niños al bajarlos y recojerlos. Su ayuda y atencion se le agradese.

Graciela Morfin
619-204-8376

Sent from my iPhone



August 10, 2023

RESIDENT/PROPERTY OWNER

Subject: TRAFFIC SAFETY COMMITTEE (TSC) ITEM NO. 2023-13

**REQUEST TO INSTALL TWO (2) LIMITED PARALLEL PARKING SPACES
IN FRONT OF GRACIELA'S FAMILY CHILD CARE LOCATED AT 212 S
KENTON AVENUE TO INCREASE PARKING TURNOVER FOR
CUSTOMERS.**

Dear Sir/Madame:

The City of National City would like to invite you to our next public Traffic Safety Committee Meeting scheduled for **Wednesday, August 16, 2020, at 1:00 P.M.** in the 2nd Floor Large Conference Room of the Civic Center Building, 1243 National City Boulevard, to discuss the above-referenced item.

The City Hall is ADA compliant. Please note that there are two disabled persons parking spaces in front of City Hall on the east side of National City that provide direct access on the 2nd Floor of City Hall via a pedestrian bridge.

If you have any questions, comments, and/or concerns, please contact the Engineering Department at 619-336-4380 and reference Traffic Safety Committee Item Number 2023-13.

Sincerely,

Martha Juarez
Acting Director of Public Works/City Engineer

SM:lz

Enclosure: Location Map

2023-13

Exhibit "A" - Location Map with Proposed Enhancements (TSC Item: 2023-13)





Location of proposed two limited parking spaces located at 212 South Kenton Avenue (looking south-west)



Location of proposed two limited parking spaces located at 212 South Kenton Avenue (looking west)

**NATIONAL CITY TRAFFIC SAFETY COMMITTEE
AGENDA REPORT FOR AUGUST 16, 2023**

ITEM NO. 2023-14

ITEM TITLE: **ESTABLISHING SPEED LIMITS ON VARIOUS NATIONAL CITY ROADWAYS BASED ON CERTIFIED ENGINEERING AND TRAFFIC SURVEYS**

PREPARED BY: Luca Zappiello, Associate Engineer – Civil Engineering & Public Works Department

DISCUSSION:

Section 22357 of the State of California Vehicle Code (CVC) permits local authorities, by ordinance, to establish speed limits greater than the prima facie speed limit of 25 miles per hour (mph) when, on the basis of an engineering and traffic survey (E&TS), the local authority determines that a speed greater than 25 mph would facilitate the orderly movement of vehicular traffic and would be reasonable and safe. Section 627 of the CVC and Section 2B.13 of the California Department of Transportation (Caltrans) Manual on Uniform Traffic Control Devices (CA-MUTCD) outline the following criteria to be considered as part of conducting an E&TS:

- 1) Prevailing speeds as determined by traffic engineering measurements.
- 2) Accident Records.
- 3) Highway, traffic, and roadside conditions not readily apparent to the driver.
- 4) Residential Density.
- 5) Safety of bicyclists and pedestrians, with increased consideration for vulnerable pedestrian groups including children, seniors, persons with disabilities, users of personal assistive mobility devices, and the unhoused.

STC Traffic (STC) completed the E&TS in April 2023, in accordance with the procedures established by Section 2B.13 of the CA-MUTCD and consistent with all applicable provisions of the CVC. STC presented the preliminary results to the Traffic Safety Committee on April 12, 2023. Direction was provided to revisit the analysis for the northern portions of Highland Avenue. STC adjusted the roadway segment limits for three segments between the northern City Limits and 18th Street, then performed a new analysis applying provisions from AB 43 and AB 1938 to maintain or reduce speed limits, where applicable, including establishment of lower speed limits within a Business Activity District. STC will support City staff with a formal presentation to the Traffic Safety Committee summarizing the results of the revised analysis.

STAFF RECOMMENDATION:

Staff recommends establishing speed limits consistent with the findings and recommendations from the engineering and traffic surveys completed in April 2023 and updated in August 2023, as presented to the Traffic Safety Committee.

EXHIBITS:

1. Presentation

**ENGINEERING & TRAFFIC SURVEYS
TO ESTABLISH SPEED LIMITS**

**TRAFFIC SAFETY COMMITTEE MEETING
AUGUST 16, 2023**



CRITERIA

CVC Section 627 | (CA-MUTCD) Section 2B.13

- Prevailing speeds as determined by traffic engineering measurements
- Accident Records
- Highway, traffic, and roadside conditions not readily apparent to the driver
- Residential Density
- Safety of bicyclists and pedestrians, with increased consideration for vulnerable pedestrian groups including children, seniors, persons with disabilities, users of personal assistive mobility devices, and the unhoused

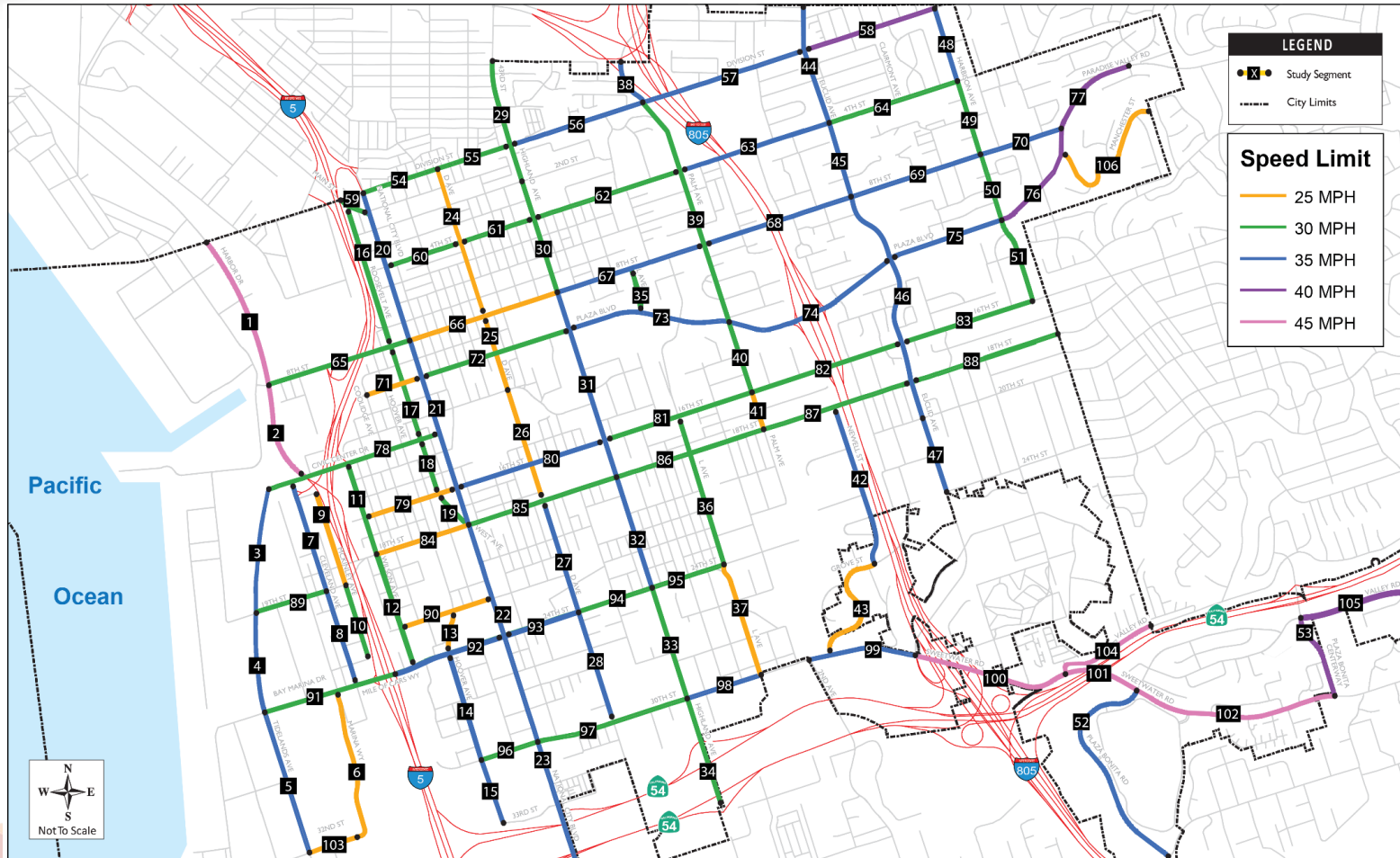


METHODOLOGY

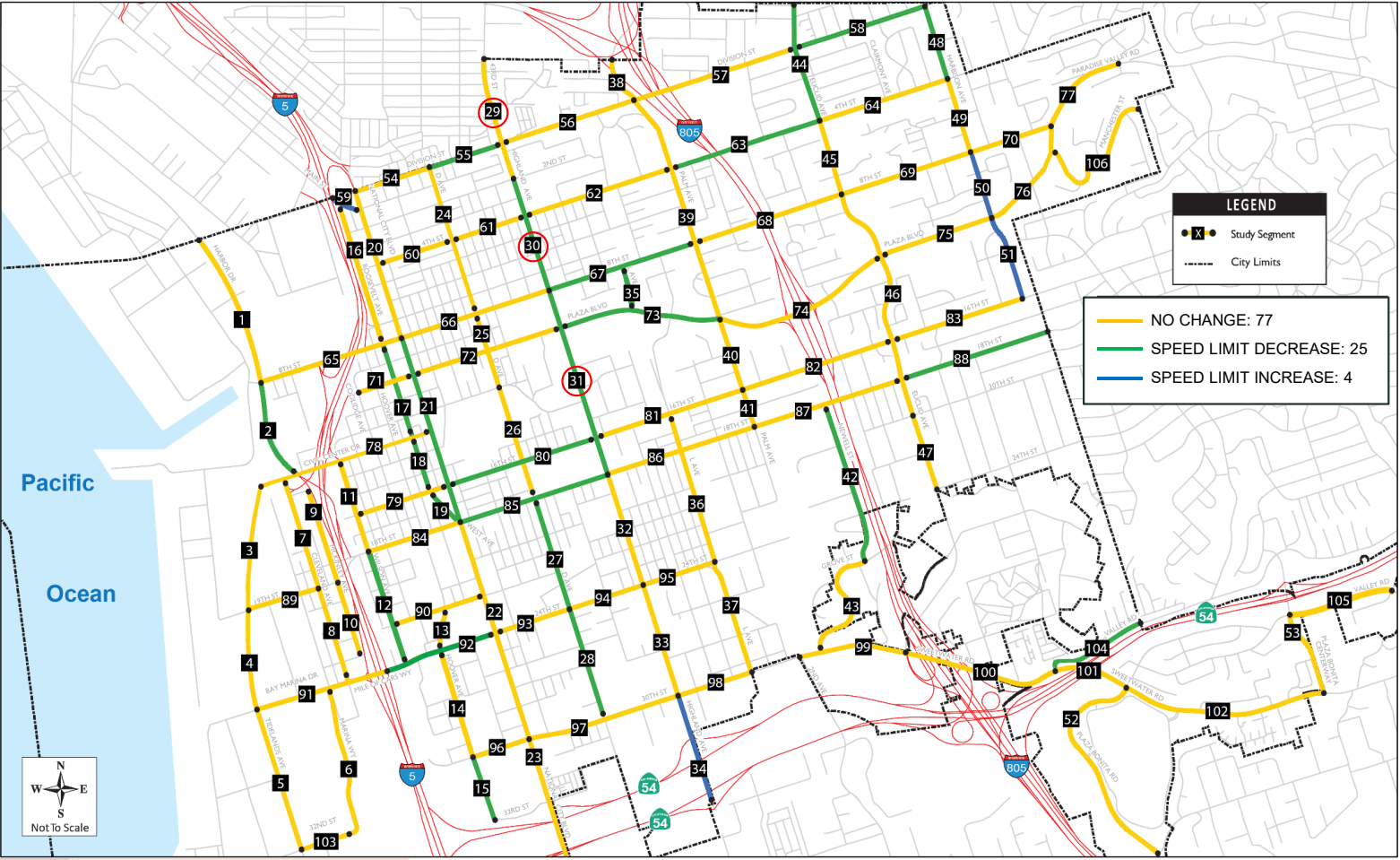
- Applied provisions from AB 43 and 1938 to maintain or reduce speed limits, where applicable, including establishment of lower speed limits within a Business Activity District
- Consolidated speed zones from 151 roadway segments to 106 roadway segments to eliminate shorter segments for better consistency with CA-MUTCD guidelines
- All National City Arterial and Collector roadways were surveyed and certified



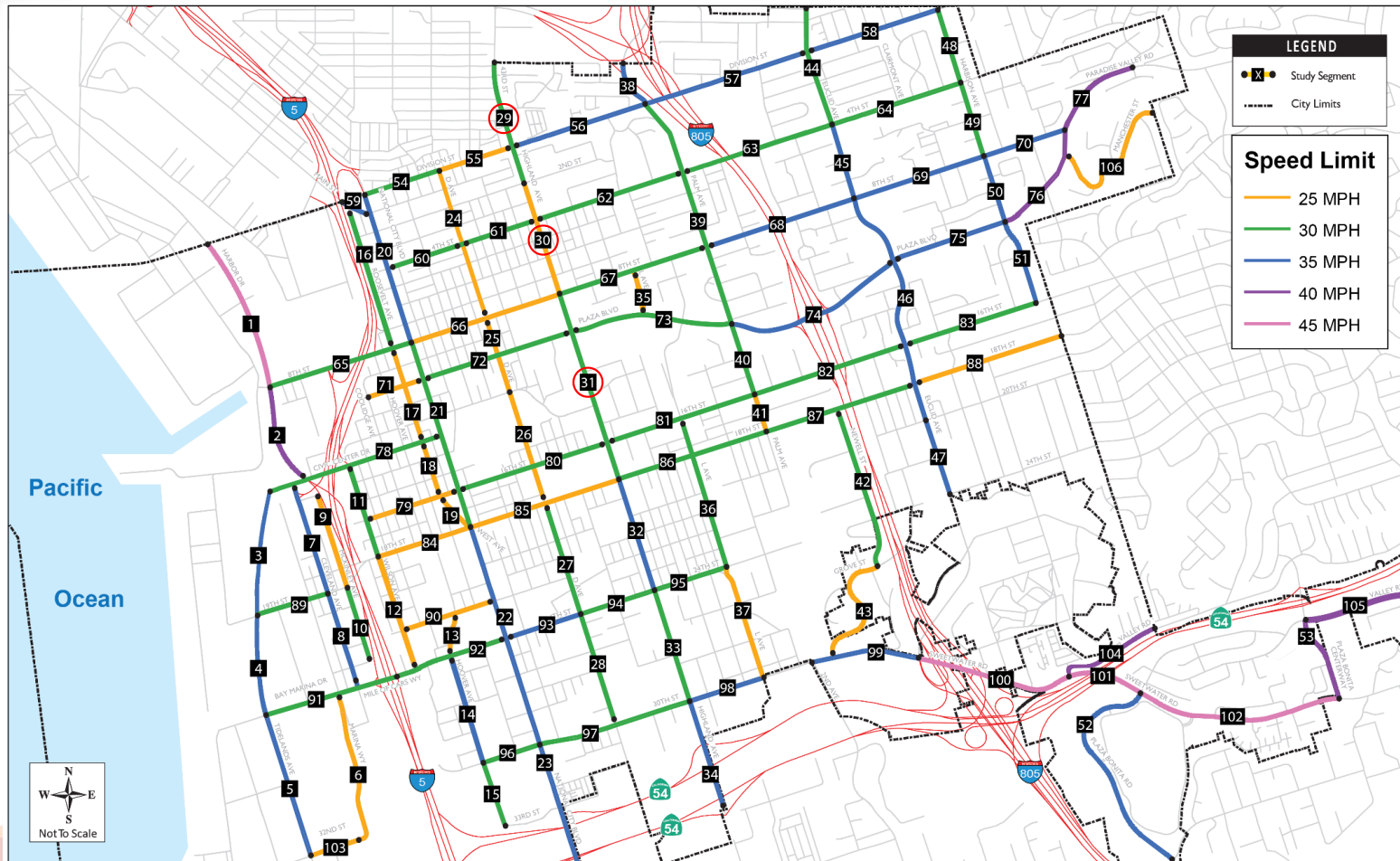
EXISTING SPEED LIMITS



CHANGES TO SPEED LIMITS



RECOMMENDED SPEED LIMITS



SUMMARY

- Revisited analysis for Highland Avenue per TSC direction:
 - #29 N. City Limit to 2nd St – Maintain 30 MPH
 - #30 2nd St to 8th St – Reduce to 25 MPH
 - #31 8th St to 18th St – Reduce to 30 MPH
- Staff recommends TSC approval

