

If you are the victim of a crime...

- Notify the National City Police Department as soon as possible.

Emergency – 911

Non Emergency
619-336-4411

- Provide a detailed description of the crime and any injuries sustained.
- Cooperate and provide as much information about the crime as you can.
- The officer can provide you with the crime report number (case number) and additional information concerning Victim's Rights.

You can request a copy of your police report at the National City Police Department.

Records Division
619-336-4400

Hours of Operation:
Monday – Thursday
7:30am – 5:30pm

About Our Police Department

The National City Police Department has over 125 years of dedicated service. It employs 134 members, both sworn and professional staff, serving approximately 59,000 residents in a nine square mile area. Three major freeways traverse the city which also provide proximity to the International Border, the Mile of Cars, the Bay Marina/Port and the 32nd Street Naval Base. Day-time population is estimated at 100,000. The city has a small town feeling with big town challenges.

Our Mission

In partnership with our community, the National City Police Department is committed to providing the highest level of service and public safety. We will pursue this commitment with an unwavering resolve while always respecting the rights and dignity of those we serve.

Our Values

Professionalism – In community service and the quality of our work through excellence and commitment.

Respect – The rights and needs of all. Treat everyone with dignity and respect.

Integrity – Firm adherence to the Code of Ethics of our profession with open, honest, clear and consistent messages.

Diversity – Is recognized, appreciated and brings strength, and we value our differences.

Employees – Are the foundation of our organization and our greatest asset. We embrace change and challenge ourselves to be the best.

National City Police Department



Robbery/ Theft Prevention

*“Making a difference in the
community”*

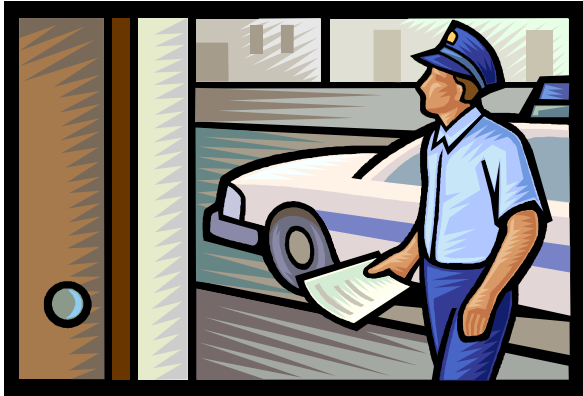
1200 National City Blvd
National City, CA 91950

Telephone: 619-336-4411

Types of Crimes against Community Members

❖ Robbery

❖ Theft



Sign up for Crime Alerts

www.crimemapping.com

Click on 'Sign Up' for crime updates in your neighborhood

Contact Crime Analysis at 619-336-4542 for more information



Prevention Tips

Robbery

Robbery is the felonious taking of personal property in the possession of another, from his person or immediate presence, and against his will, accomplished by means of force or fear.

- Be aware of your surroundings.
- Stay in lighted areas at night.
- Stay with the crowd — there is safety in numbers.
- Be cautious when wearing "flashy" jewelry.
- Do not carry large sums of money, or credit cards on your person.
- Carry your purse close to the front of your body. Put your wallet in an inside coat or front pants pocket.
- Be aware of people around you when you are using your automatic teller machine (ATM) card. When possible, use an ATM that is located inside a business such as a grocery store.
- While driving, keep your vehicle doors locked.
- Avoid parking in isolated areas. Be especially alert in parking lots and garages.
- Walk against the flow of traffic.
- Report any suspicious persons or activity to police.

Theft

Theft is to steal, take, carry, lead, or drive away the personal property of another, or fraudulently appropriate property, or defraud any other person of money, labor or property.

- Don't leave valuables unattended.
- Don't leave purses or other valuables in a shopping cart unattended.
- Lock your bicycle to a rack with a quality hardened lock.
- Engrave property with your driver's license number.
- Record the make, model, and serial number of all valuable items and keep the record in a safe place.
- Be aware of your surroundings.
- Report any suspicious persons or activity to police.

Top 10 Stolen Items

1. Navigation or GPS
2. Laptop Computer/Tablets
3. IPOD/MP3 Player
4. Purse
5. Wallet
6. Camera
7. Cellular Phone
8. Hand Tools
9. Sunglasses
10. Compact Discs