

**MINUTES OF THE ADJOURNED REGULAR MEETING OF THE
CITY COUNCIL AND COMMUNITY DEVELOPMENT COMMISSION
– HOUSING AUTHORITY OF THE CITY OF NATIONAL CITY**

HOMELESSNESS WORKSHOP

April 21, 2015

The Adjourned Regular Meeting of the City Council and Community Development Commission – Housing Authority of the City of National City was called to order at 4:33 p.m. by Mayor / Chairman Ron Morrison.

ROLL CALL

Council / Board members present: Cano, Mendivil, Morrison, Rios, Sotelo-Solis.
Administrative Officials present: Dalla, Deese, Duong, Manganiello, Parra, Raulston, Roberts, Rodriguez, Silva, Stevenson, Tellez, Vergara, Williams, Ybarra.

PLEDGE OF ALLEGIANCE TO THE FLAG BY MAYOR RON MORRISON

HOMELESSNESS WORKSHOP

1. Presentation and discussion of issues and impacts associated with Homelessness in National City.

Following opening comments by City Manager Leslie Deese, Neighborhood Services Director Armando Vergara made introductory remarks, outlined the format of the Workshop and began a PowerPoint presentation on the challenges of Homelessness.

Note: All presentation materials are attached as Exhibit 'A'

Individual presentations were made by Dolores Diaz, Executive Director of the Regional Task Force on Homeless, San Diego State University Professor Christine Mahor and student from the Sage Project. City Staff presenters were Frank Parra, Emergency Services Director, Jose Tellez, Police Department, Jennifer Knight, City Attorney's Office, Alfredo Ybarra, Housing and Grants, Steve Manganiello, Public Works, City and Joe Olson, Neighborhood Services Department.

HOMELESSNESS WORKSHOP (cont.)

Presentation and discussion of issues and impacts associated with Homelessness in National City included: Regional Breakdown of San Diego County Homelessness, Estimate of National City Homeless Population by year, Impacts to Fire, Medical and Police Services, Legal impacts and constraints, Traditional Housing, CDBG and Home Funded Activities, Encampments and Clean-Ups, Current Projects and Culvert Detail and the Sweetwater Riverbed at Plaza Bonita.

San Diego State University SAGE Project participants presented their research and findings on homelessness and various strategies for addressing the issue.

RECOMMENDATIONS

Staff recommended: The City continue research into Pilot Programs with Alpha Project; continue working with Housing & Grants Department to research programs and available funding; Establish a Fiscal Year 2016 budget for Homeless Outreach services and to Enhance and continue involvement with mainstream agencies and organizations involved with homelessness.

PUBLIC COMMENTS

Ed Paniagua, National City, said he deals with problems of homelessness in his job and sees the problems it creates in National City. He believes something needs to be done.

Melanie Cole, San Diego, apologized for interfering with City personnel while attempting to help a homeless family member.

Eddie Perez, San Diego, said he believes in the "tough love" approach and that the County is not doing their part in dealing with homeless problems.

CITY COUNCIL DIRECTION – COMMENTS

Councilmember Mendivil thanked staff, San Diego State SAGE Project students and the residents. He said he believes we can address the problems of homelessness but that it needs to be a collaborative approach with San Diego, Chula Vista, the County, Port District and all churches in the City. If we pool resources and knowledge, the problem is doable. Member Mendivil also recommended a visit to the Dream Center facility in Los Angeles.

CITY COUNCIL DIRECTION – COMMENTS (cont.)

Councilmember Rios thanked staff for all their hard work compiling the information. She believes our homeless numbers have gone down because of the City's ongoing code enforcement efforts; that we need to look at housing as an option and approach the problem as a regional issue.

Councilmember Sotelo-Solis expressed appreciation to staff for a fabulous presentation. She said going forward she believes that it is important to have some determination made of what the benchmark for success would be in dealing with homelessness; what goals are we pursuing and how are we doing in reaching those goals. Member Sotelo-Solis is very interested in the updated homeless census from the Regional Task Force on Homeless.


Vice Mayor Cano also thanked staff for the presentation. One of the things he would like to see is the flow chart that was presented to include a clear indication of who or what agency is responsible for each item on the chart so we can focus our efforts and money to help the most people.

Mayor Morrison said there are so many different kinds of homelessness; it is difficult to know how to best deal with them in a meaningful way with limited resources or to know which government agency is responsible. There is a delicate balance between being human and, at the same time, being sure we are protecting our community. The costs of homelessness are many and varied and there are no easy answers.

ADJOURNMENT

The meeting was adjourned to the next Regular Meeting of the City Council and Community Development Commission – Housing Authority of the City of National City to be held Tuesday, April 21, 2015 at 6:00 p.m. at the Council Chambers, National City, California.

The meeting closed at 6:17 p.m.



City Clerk

The foregoing minutes were approved at the Regular Meeting of February 2, 2016.



Mayor



Homeless Workshop

April 21, 2015

EXHIBIT 'A'

Introduction

- City Manager – Leslie Deese
- Director Neighborhood Services Department (NSD) - Armando Vergara
 - Workshop format
 - Strategic Plan-Homeless Outreach Objective, adopt a comprehensive long term strategy
 - Limitations of city resources, departments like police, fire, code enforcement and public works & parks
 - Impacts to Public Health, Safety and Welfare
 - Availability of existing resources and programs

Definition of Homeless

- Homeless - An unsheltered homeless person residing in a place not meant for human habitation, such as cars, parks sidewalks abandoned buildings (on the street) or a sheltered homeless person residing in an emergency shelter, including temporary emergency shelters only open during severe weather, or a sheltered homeless person residing in transitional or supportive housing for homeless persons who originally came from the streets or emergency shelters.

Challenges

- Homelessness is a critical issue impacting multiple sectors of our community
- Coordination of resources, regionally, statewide and nationally
- Addressing the underlying causes of homelessness
- Lessening the negative impacts of homelessness on individuals, families and our communities

We All Count – Regional Task Force on the Homeless (RTFH)

- Executive Director – Dolores Diaz
- The 2014 San Diego Regional Homeless Point-In-Time Count (PITC) took place on January 23, 2014
 - Annual count of homeless population in the San Diego County region
 - 1,500 Volunteers and community leaders involved
 - Count enables the region to qualify for funding
 - 2014 count estimated about 8,500 homeless
 - PITC 2014 report concluded 17% veterans, 26% suffer from severe mental illness, while 19% are considered chronic substance abusers
- The 2015 San Diego Regional Homeless Point-In-Time Count (PITC) took place on January 23, 2015
 - Results and data to be available by end of April 2015

2014 Regional PITC Summary

Estimates of Homelessness



	2013	2014	CHANGE
Total Homeless	8,879	8,506	-4%
Unsheltered	4,574	3,985	-13%
Sheltered	4,305	4,521	5%

Regional Breakdown of Homelessness in San Diego County 2014

San Diego County Regions	Sheltered Homeless Persons	Unsheltered Homeless Persons	Total	% by Region
City of San Diego	2731	2468	5199	61.1%
North County Inland	761	263	1024	12.0%
South County	187	666	853	10.0%
East County	416	378	794	9.3%
North County Coastal	426	210	636	7.5%
<i>San Diego County</i>	4521	3985	8506	100%

Estimates of Homelessness Regional Trends – San Diego County

	% Change 2013-14	% Change 2011-14
Unsheltered	-13%	-20%
Sheltered	5%	12%
Total Homeless	-4%	-6%

Estimates of Homelessness City of National City

	2012	2013	2014	2015
Unsheltered	143	128	266	Results Pending
Sheltered	18	29	18	Results Pending
Total Homeless	161	157	284	Results Pending
Total % with Cities & Unincorporated	1.6%	1.8%	3.4%	

City of National City

- Introduction of City Departments involved
- History of City Homeless Committee
- Municipal Code
- Encampment Policy
- Partnerships



February 2014 Homeless Encampment Fire



Fire & Medical Services

- 2013 – Fire / Medical responded and assisted with 68 incidents involving identified homeless persons.
 - Substance abuse, sick person, psychiatric problem, trauma, overdose, cardiac-chest pains, alcohol withdrawals, extremity pain, respiratory distress, abdominal pain, dizzy, diabetic problem, altered mental status, heat illness, seizure, medical evaluations for the Police Department
 - Age range 19 – 80 years of age
 - 85% Male gender patient
- 2014 – Fire / Medical responded and assisted with 76 incidents involving identified homeless persons (same types of calls as 2013).
 - Age range 27 – 73 years of age
 - 22% Female gender patients

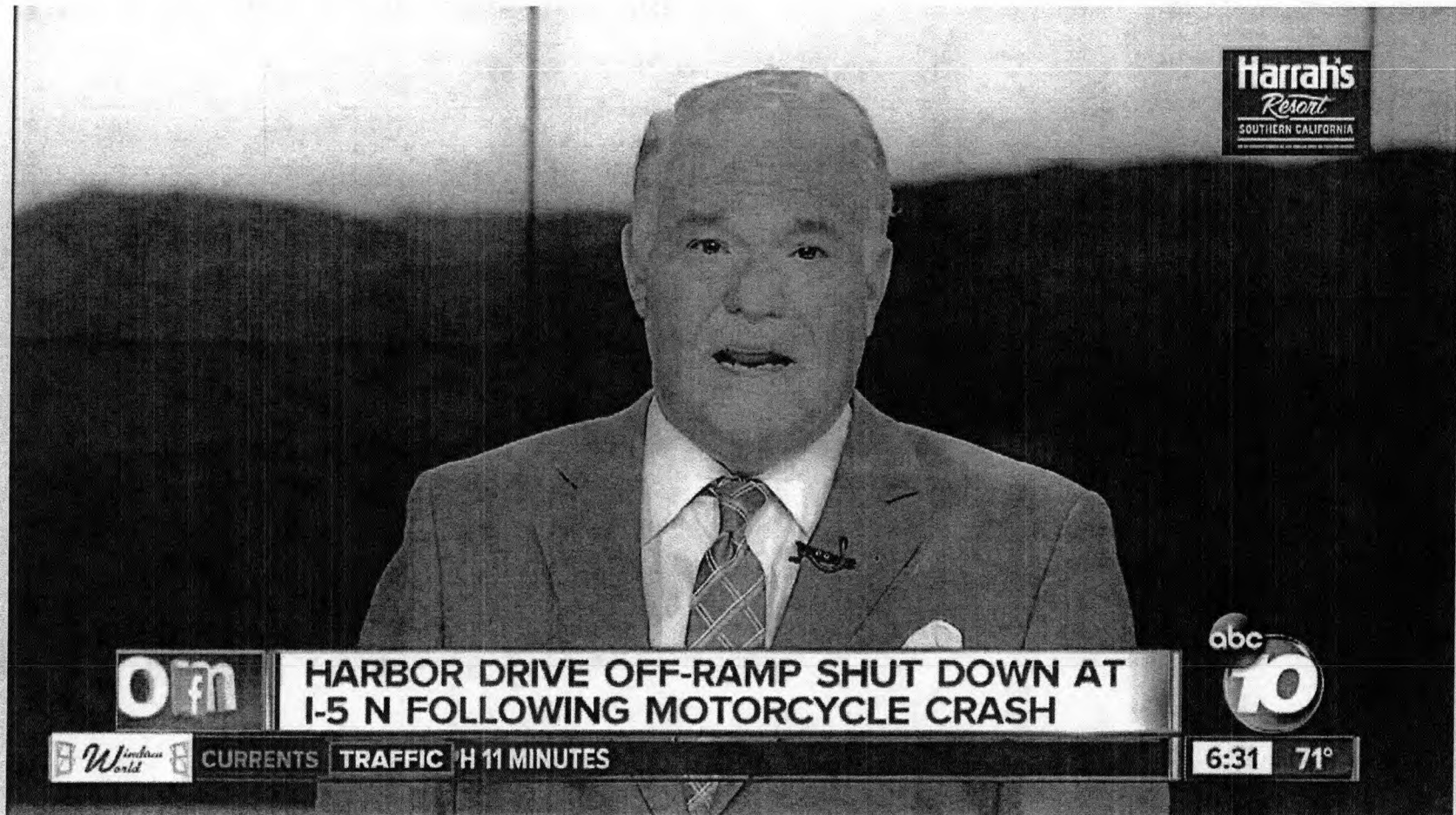
Fire & Medical Services

- 2014 – Fire responded to 11 vegetation / structure fires as a result of homeless encampments or activities.
- 2013 – Fire responded to 10 vegetation / structure fires as a result of homeless encampments or activities.

Fire Impacts and Hazards

- Chemicals, propane, vehicle batteries, hazardous waste
- Human waste, drug paraphernalia

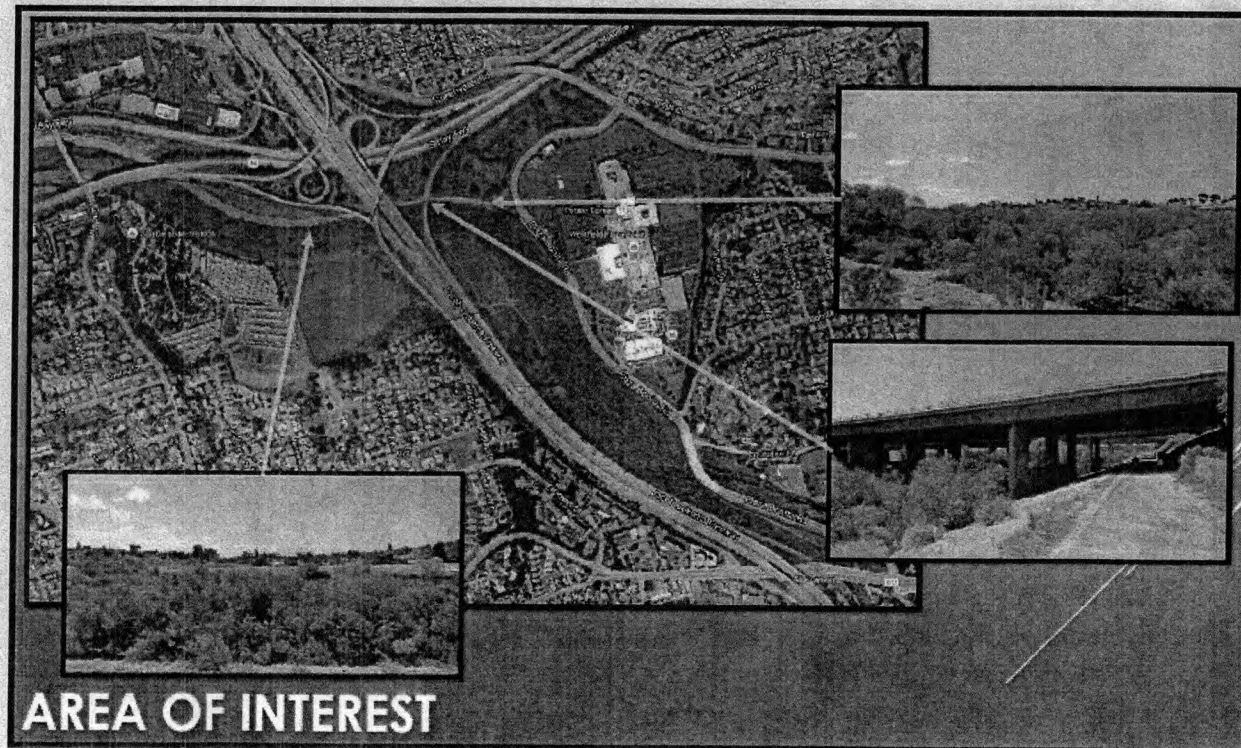
Plaza Bonita Homeless Encampment Clean Up September 2014



Police Services

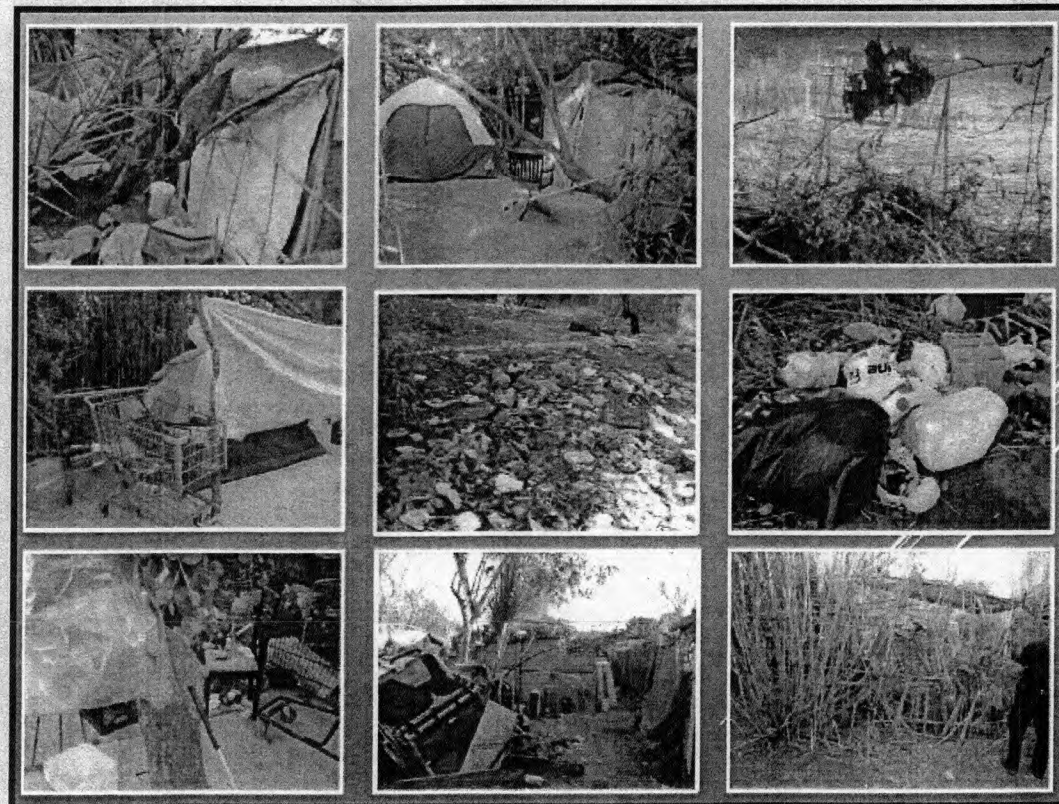
Operation Jungle Book

- On September 22, 2014, the National City Police Department, in conjunction with multiple other law enforcement agencies, conducted an operation in the river bed west of the Plaza Bonita Mall. The area is part of the Sweetwater River Channel and is commonly referred to as “The Jungle.” The purpose of this operation to address the issues of trespassing.



Operation Jungle Book

- This area was selected in order to reduce the criminal activity that spills into the neighboring residential areas and the Plaza Bonita Mall. Prior criminal investigations, including homicide, arson, assaults, theft, drug sales, drug usage, have been a drain on law enforcement and fire protection services.



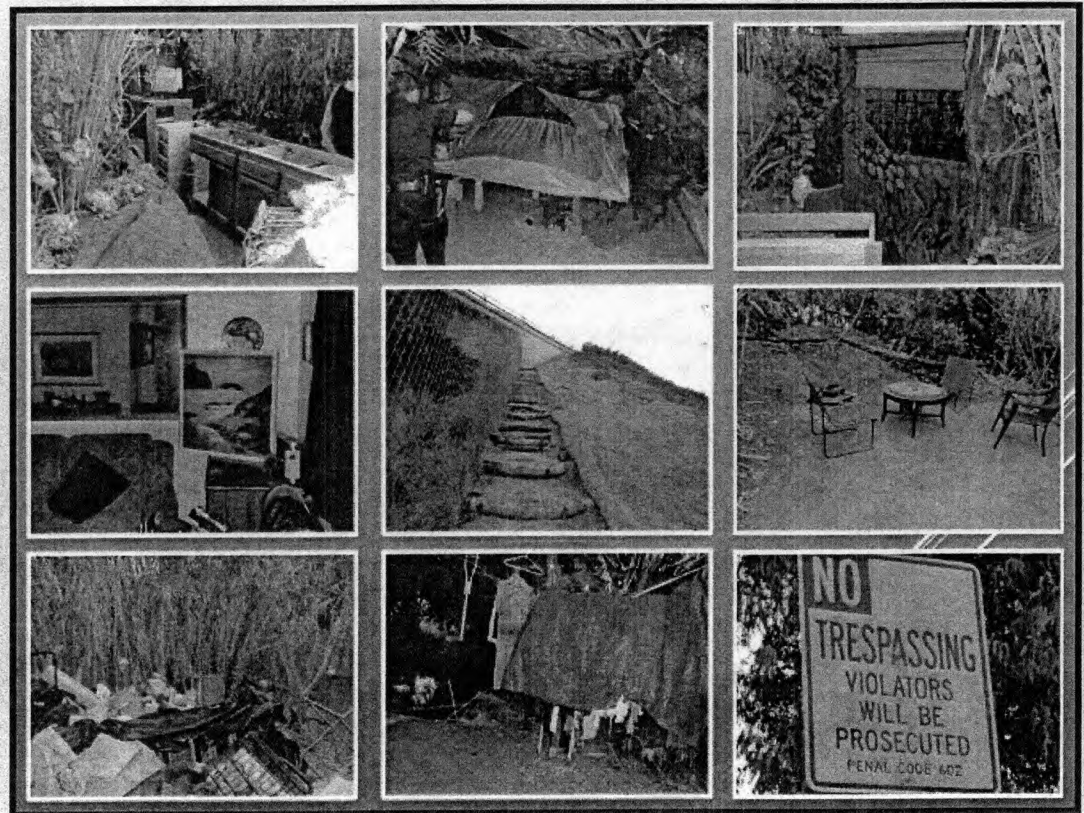
Operation Jungle Book

- In addition to combating the criminal element plaguing this area, the National City Police Department and the City of National City offered services and resources to individuals who have continued to trespass in the river bed.

The operation netted:

- 75 Field Interviews
- 13 arrests. Officers
- ID habitual offenders

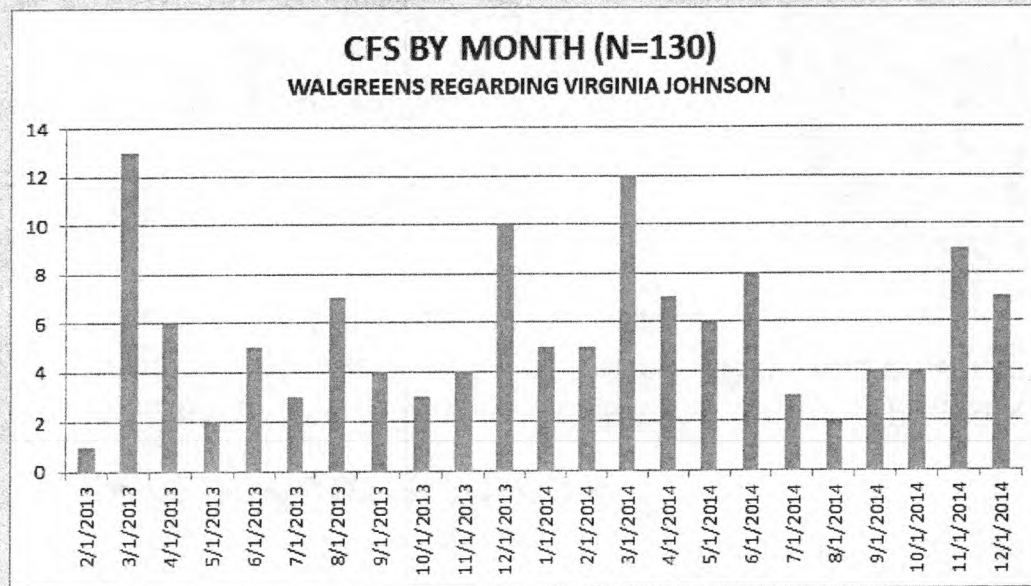
Hazmat areas were quarantined,
and Animal Control was on hand to
aid with any wildlife issues.



CASE STUDY OF HABITUAL TRANSIENT ISSUE

- In the examination of 130 Calls for Service regarding ANONYMOUS at one commercial location between the dates of February 2013 – Dec 2014, NCPD officers have spent approximately 18.5 total hours dealing with ANONYMOUS . The calculation only included the officers' were physically at the location.
- Dispatchers' time spent on the calls was not calculated.
- The final dispositions of the calls breakdown as follows:

ADVISED	20
ADVISED- SENT ON WAY	1
ASSISTED	1
BEAT INFO	2
CHECKED OK	4
CIT & RELEASE	4
FIELD INTERVIEW	3
GONE ON ARRIVAL	28
NO CRIME	1
NO LONGER NEEDED	5
PENDING RECALL	1
REPORT TAKEN	2
SENT ON WAY	60
TRANSPORTED TO JAIL	1

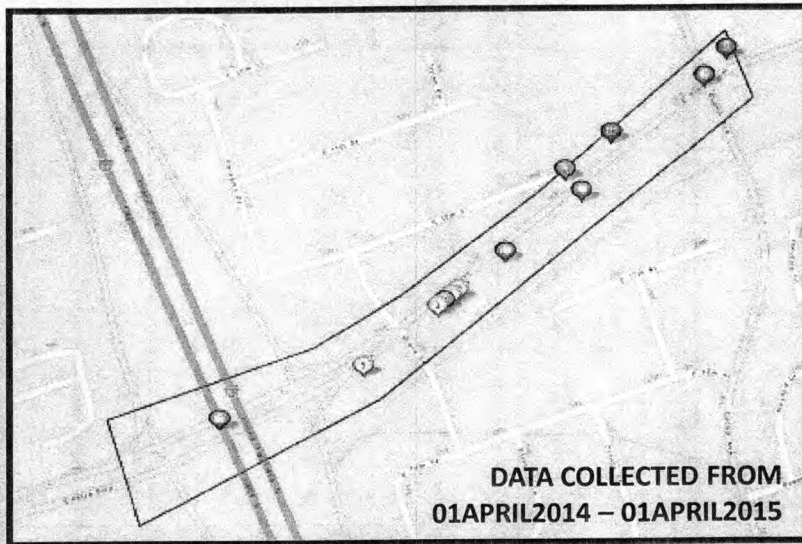


Four calls resulted in case reports:

- 1301187
- 1304993
- 1306414
- 1404838

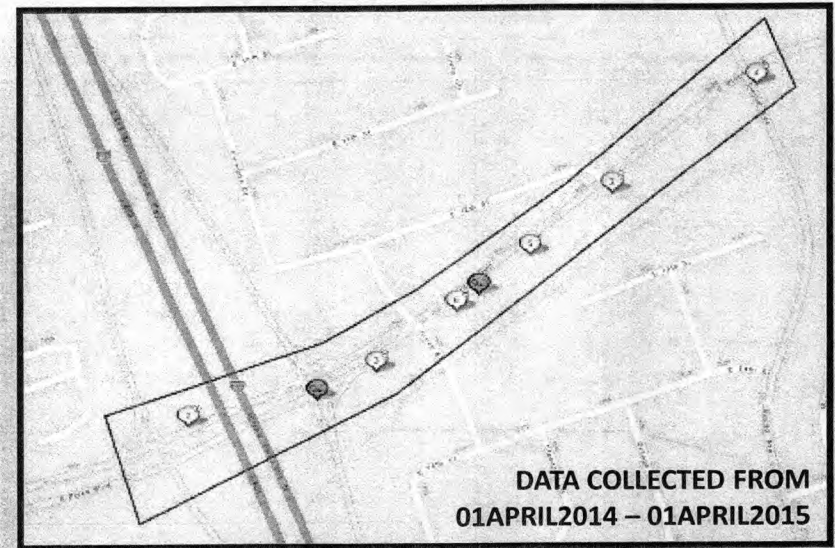
1800-2600 E PLAZA BLVD :: aka "The Tunnels"

CRIME CASES



AGGRAVATED ASSAULT	2
COMMERCIAL BURGLARY	2
LARCENY	10
FAMILY OFFENSE	1
FRAUD	1
MOTOR VEHICLE THEFT	1
SIMPLE ASSAULT	7
VANDALISM	1

ARRESTS



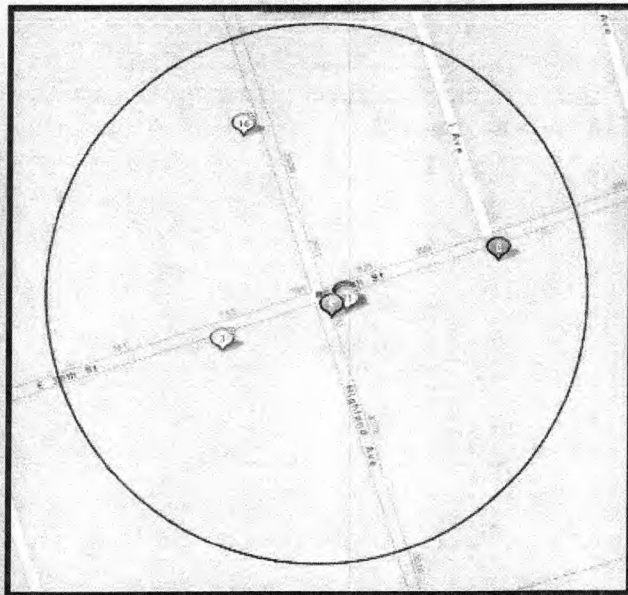
5150 – MENTALLY ILL	6
NARCOTICS	14
ASSAULT	1
DUI / DRUNK IN PUBLIC	3
FELONY WARRANT	5
ROBBERY	1

36 FIELD INTERVIEWS TAKEN IN THIS AREA SPECIFICALLY RELATED TO TRANSIENT ISSUES.

30TH & HIGHLAND

DATA COLLECTED FROM
01APRIL2014 – 01APRIL2015

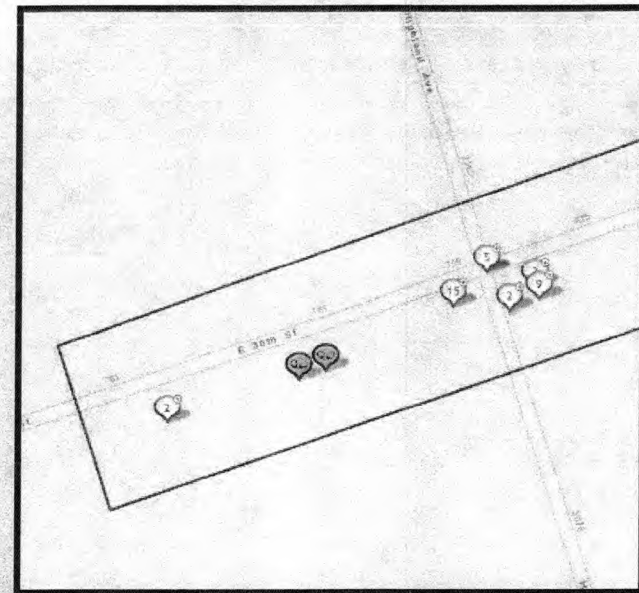
CRIME CASES



COMMERCIAL BURGLARY	8
LARCENY	16
MOTOR VEHICLE THEFT	4
ROBBERY	2
SIMPLE ASSAULT	7
VANDALISM	4
FAMILY OFFENSE	2

*16 cases occurred at High School

ARRESTS

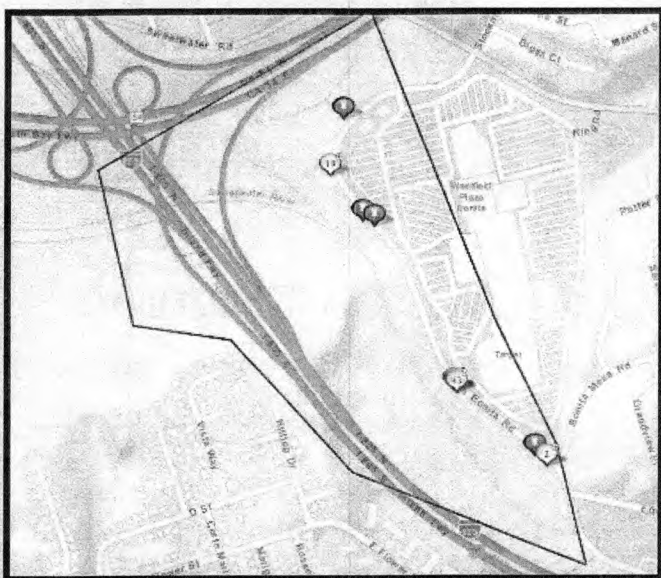


BATTERY (DV)	2
DISORDERLY CONDUCT: ALCOHOL	2
5150: MENTALLY ILL	3
PETTY THEFT	1
WARRANT	1
UNDER INFLUENCE OF CONTROLLED SUBSTANCE	1

*27 of 39 arrests related to Vehicle or DUI charges

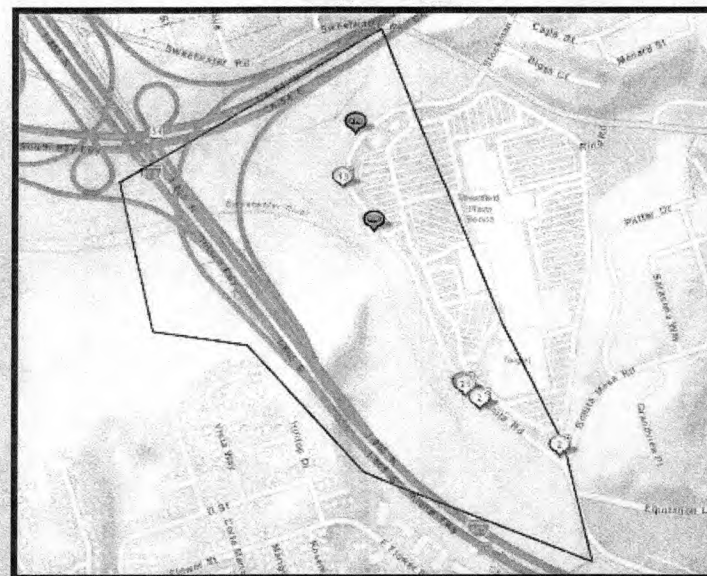
PLAZA BONITA MALL AREA :: The Riverbed

CRIME CASES



BURGLARY	14
LARCENY	21
ASSAULT	8
MOTOR VEHICLE THEFT	24
ROBBERY	8
NARCOTICS	7
FRAUD	4

ARRESTS



PETTY THEFT	133
BURGLARY	31
NARCOTICS	16
ROBBERY	7
LARCENY	7
ASSAULT	3
DRUNK IN PUBLIC	1
MENTALLY ILL	4
WARRANTS	7
MOTOR VEHICLE THEFT	2

85 FIELD INTERVIEWS TAKEN IN THIS AREA SPECIFICALLY RELATED TO TRANSIENT ISSUES.

POLICE - CALLS FOR SERVICE

APRIL 2014 – APRIL 2015

- MONDAY, THURSDAY, FRIDAYS → HIGH VOLUME
- TRESPASSING CALLS FOR SERVICE: 331
- PANHANDLING CALLS FOR SERVICE: 63
- LOITERING CALLS FOR SERVICE: 66
- FIELD INTERVIEWS: 262*

SPECIFICALLY MENTIONS TRANSIENT OR HOMELESS IN NARRATIVE

Legal

- Monitoring Case Law Decisions
- Constitutional Enforcement of Laws
 - E.g. Clean-up Projects
- Monitoring Legislative Developments
 - AB 5
 - SB 608
 - AB 35 & 1335

Transitional Housing

Casa Nueva Vida – 31 4th Avenue, Chula Vista, CA

- Opened in 1993
- 13 unit short term and transitional housing available for residents of National City and Chula Vista – 1-2 bedroom shared units.
- Provides daycare with average stay of families of 90 days
- Average of 2.5 families from National City use transitional housing
- Term agreement is for 30 years starting in 1993

Transitional Housing – Confidential Location

- Opened in 2001
- 8 unit apartment complex (4/2 bdrm, 2/1bdrm, 1/3 bdrm)
- Assist homeless women with children who are domestic violence victims.
- Recommended maximum twenty-four month stay.
- Term agreement is for 30 years starting in 2001

CDBG & HOME Funded Activities

FY	Funding	Activity	Agency
1999	\$ 25,000	Transitional Housing Project	South Bay Community Services (SBCS)
2000	\$ 15,000	Community Food Bank	Community Food Bank of National City
2000	\$321,914	Transitional Housing Project	South Bay Community Services
2006	\$ 10,000	Community Food Bank	Highland Avenue Baptist Church
2008	\$ 2,881	Community Food Bank	Community Food Bank of National City
2009	\$10,000	Community Food Bank	Community Food Bank of National City
2010	\$ 41,203	Homeless Outreach Program and Enforcement	City of National City, Neighborhood Services
2011	\$ 95,000	Homeless Outreach Program and Enforcement	City of National City, Police and SBCS
2012	\$ 32,607	Homeless Assistance Program	City of National City, Neighborhood Services
2015	\$162,633	Tenant Based Rental Assistance	South Bay Community Services
2016	\$200,000	Tenant Based Rental Assistance	South Bay Community Services
Total	\$916,238		

Encampments & Clean-Ups

- Public Works & Parks

- 2013

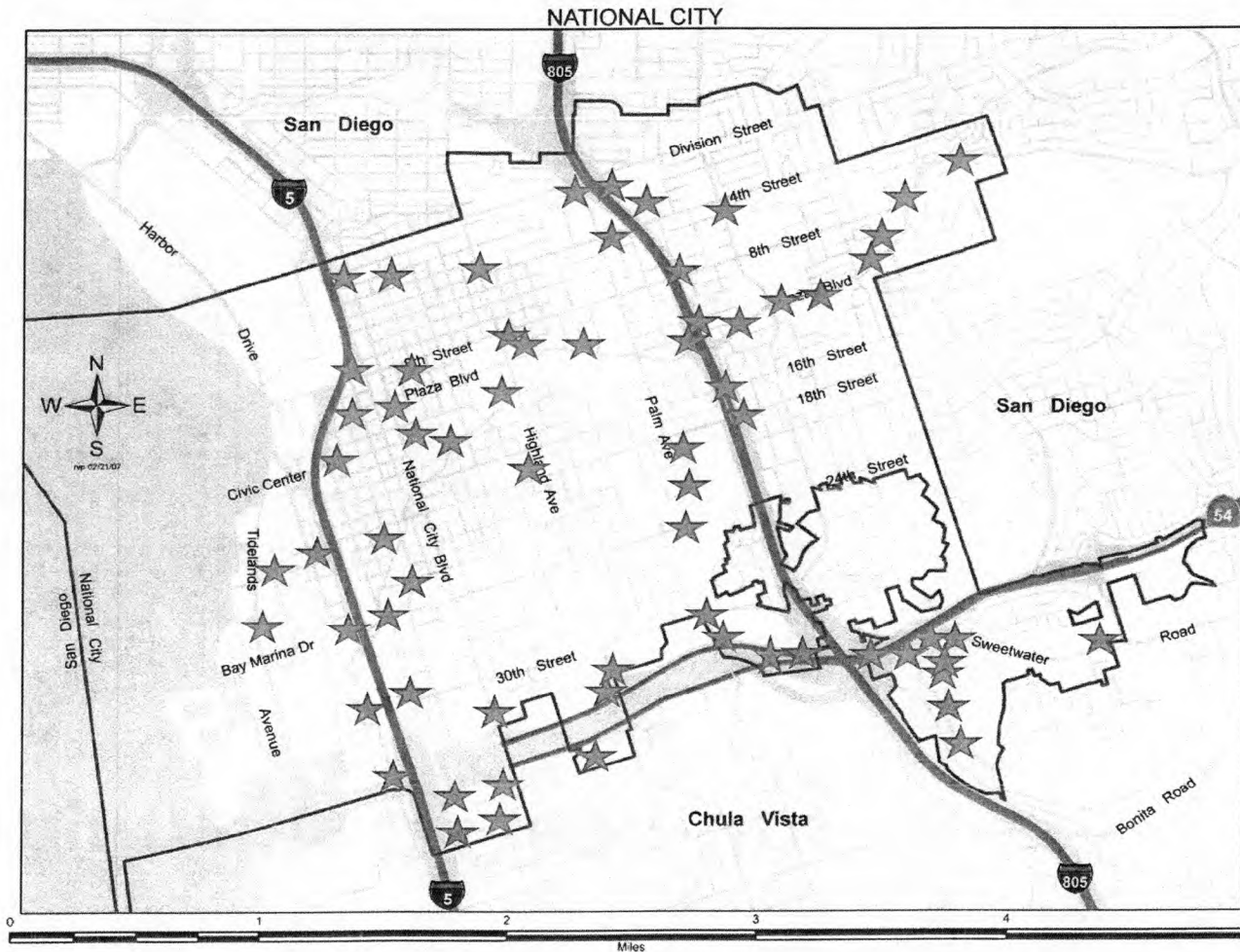
- 47 encampment clean-ups completed
 - 325 yards of trash collected
 - 308 hours of PW & Parks staff

- 2014

- 66 encampment clean-ups completed
 - 520 yards of trash collected
 - 430 hours of PW & Parks staff

- **Estimated cost impacts on PW / Park and Code Enforcement staff hours for addressing homeless encampments: \$ 25,000 FY13-14**

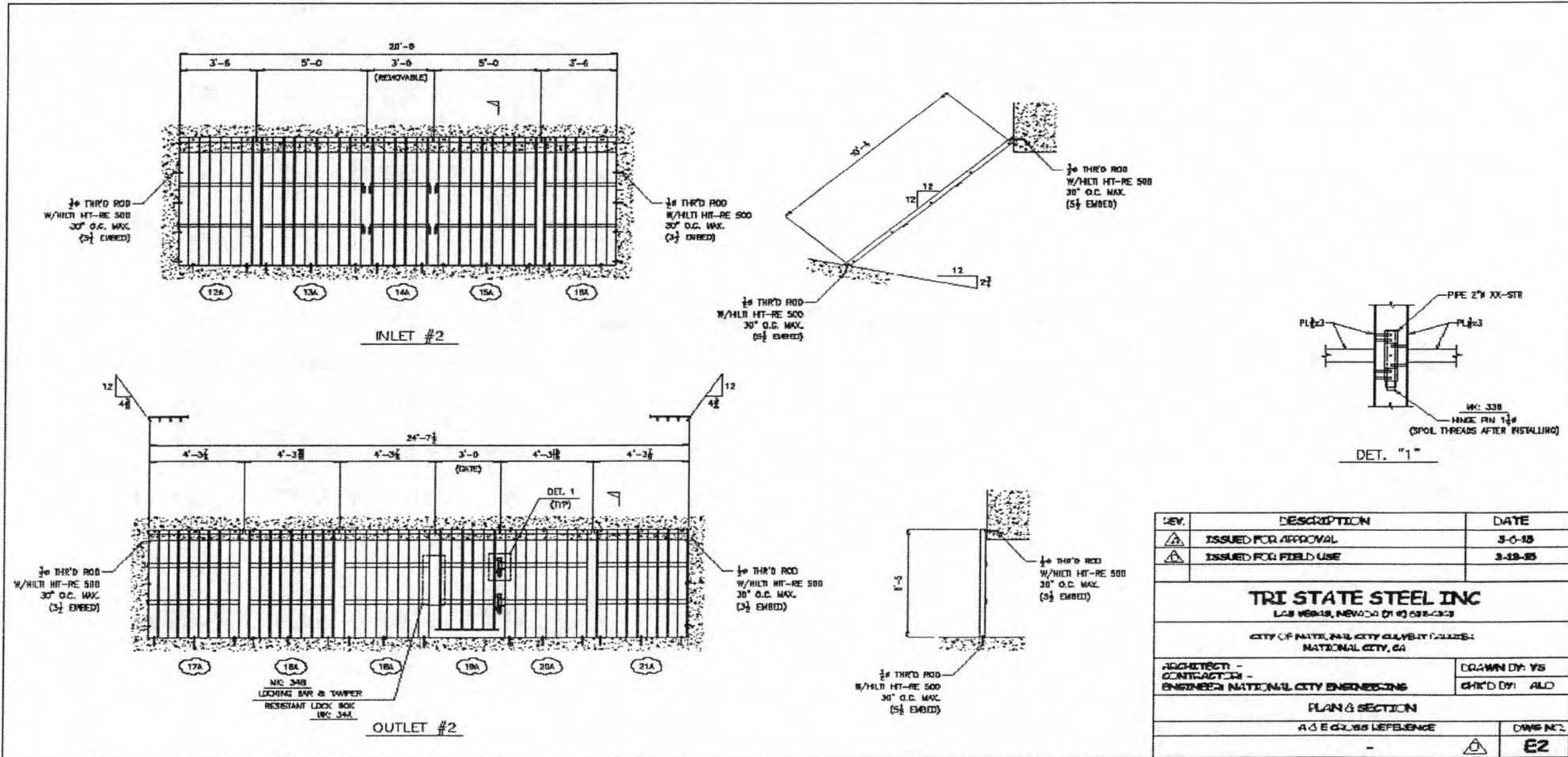
City Map Overview of Homeless Encampments in 2014



Current Projects

- Culvert / Storm Grate Barrier Installation Project
 - 2014 City Manager directed staff to research / implement
 - Contract Approved January 22, 2015
 - Onsite Work to begin April 20, 2015
 - Projected Completion date for all seven locations June, 2015
- Benefits
 - Public Health and Safety
 - Storm Water compliance
 - U.S. Environmental Protection Agency
 - State and Federal Clean Water Acts
 - Safety and welfare of emergency and City staff
 - Minimize calls for service and department impacts

New Culvert / Storm Grate Drawing

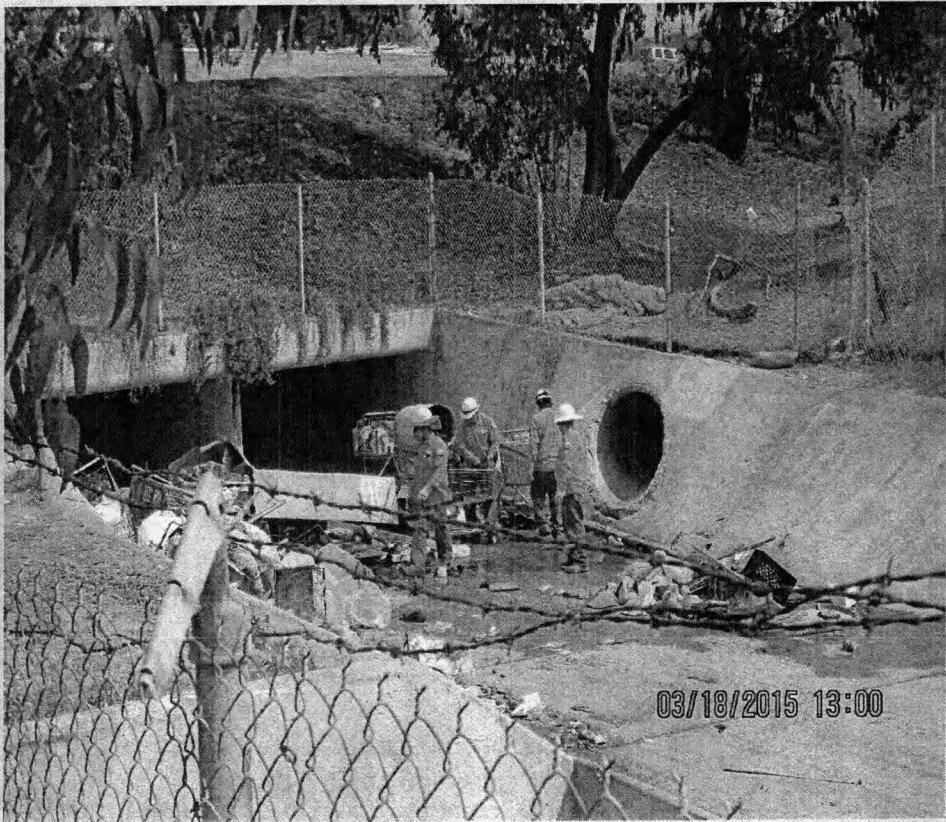
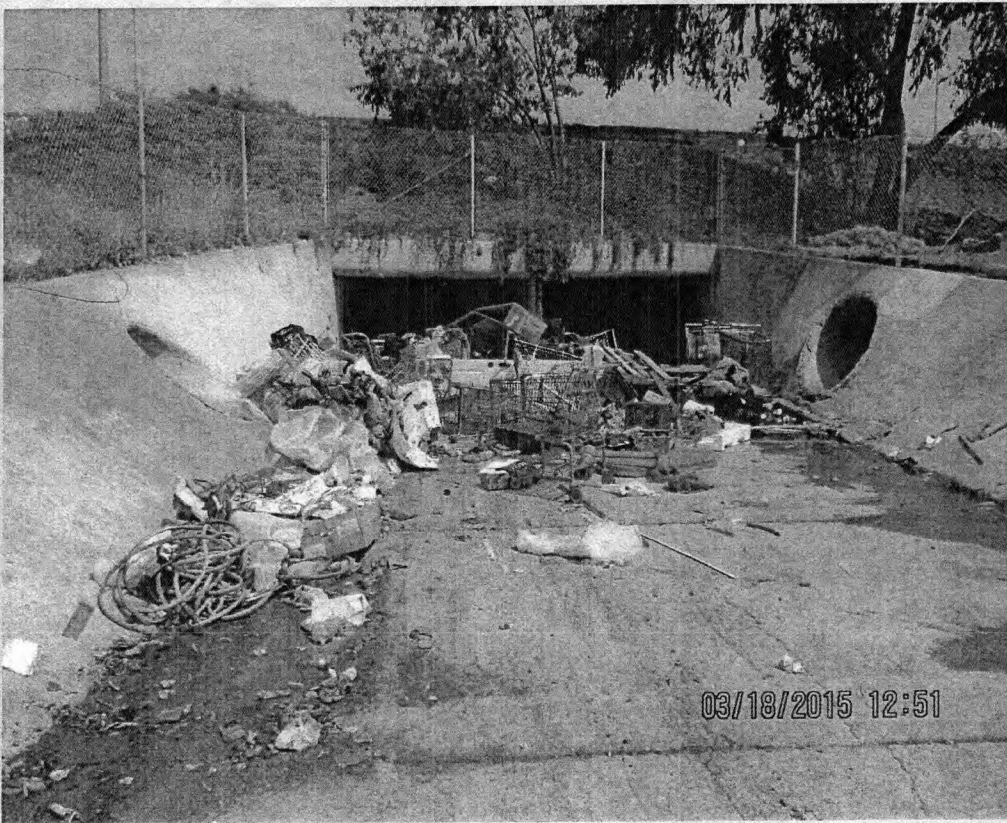


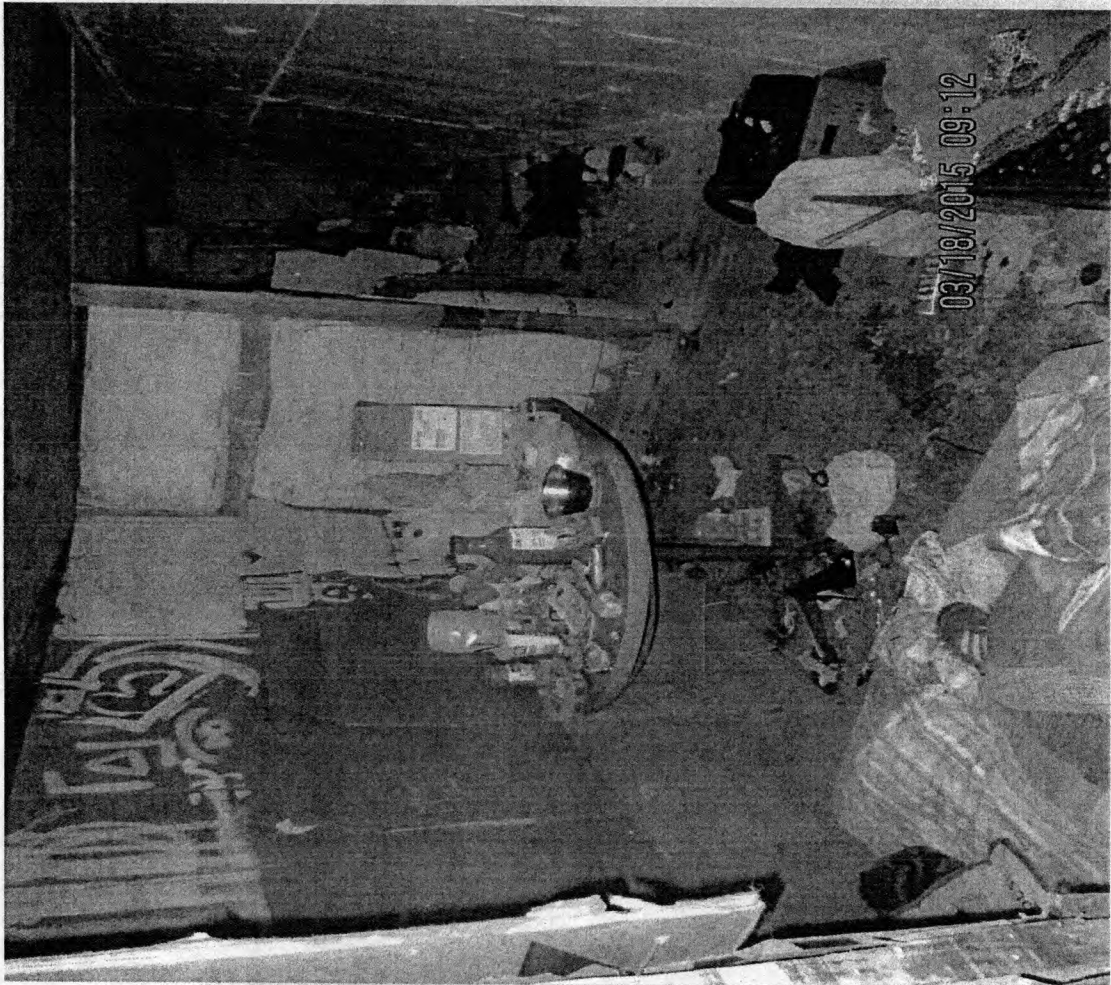
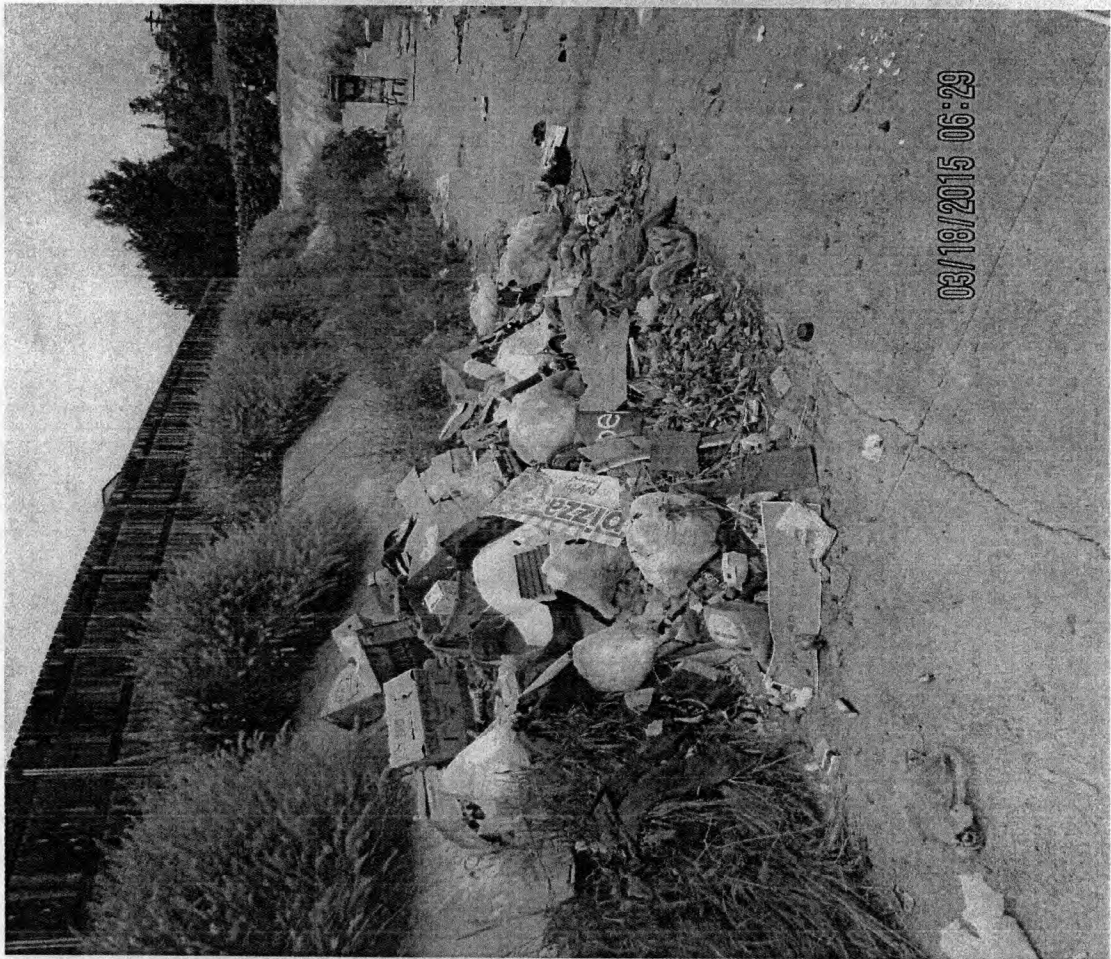
REV.	DESCRIPTION	DATE
△	ISSUED FOR APPROVAL	3-0-85
△	ISSUED FOR FIELD USE	3-18-85
TRI STATE STEEL INC LAS VEGAS, NEVADA (714) 638-6323		
CITY OF NATE, NAIL CITY CULVERT (LARGE) NATIONAL CITY, GA		
ARCHITECT -	CONTRACTOR -	DRAWN BY: VS
ENGINEER NATIONAL CITY ENGINEERING		CHECK'D BY: ALD
PLAN & SECTION		
A & E CROSS REFERENCE		OWNER'S
-		E2

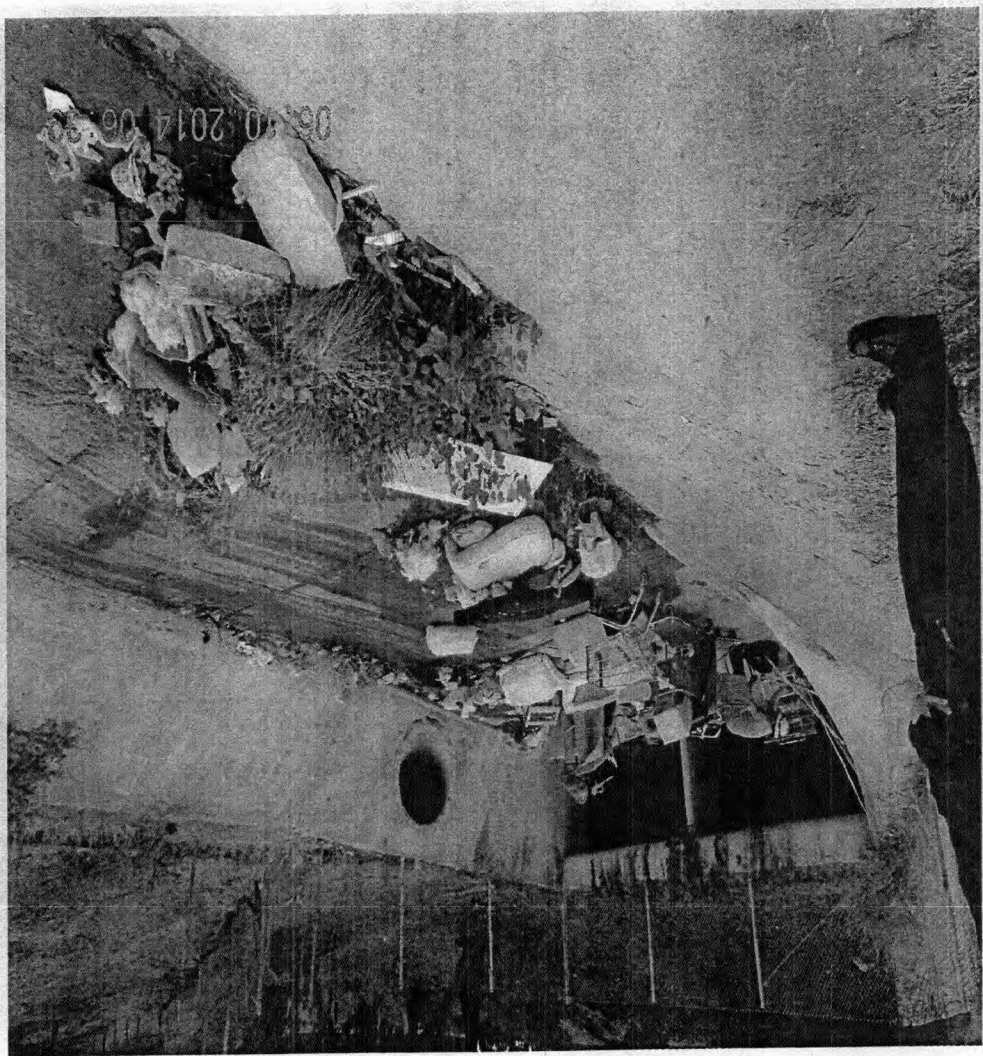
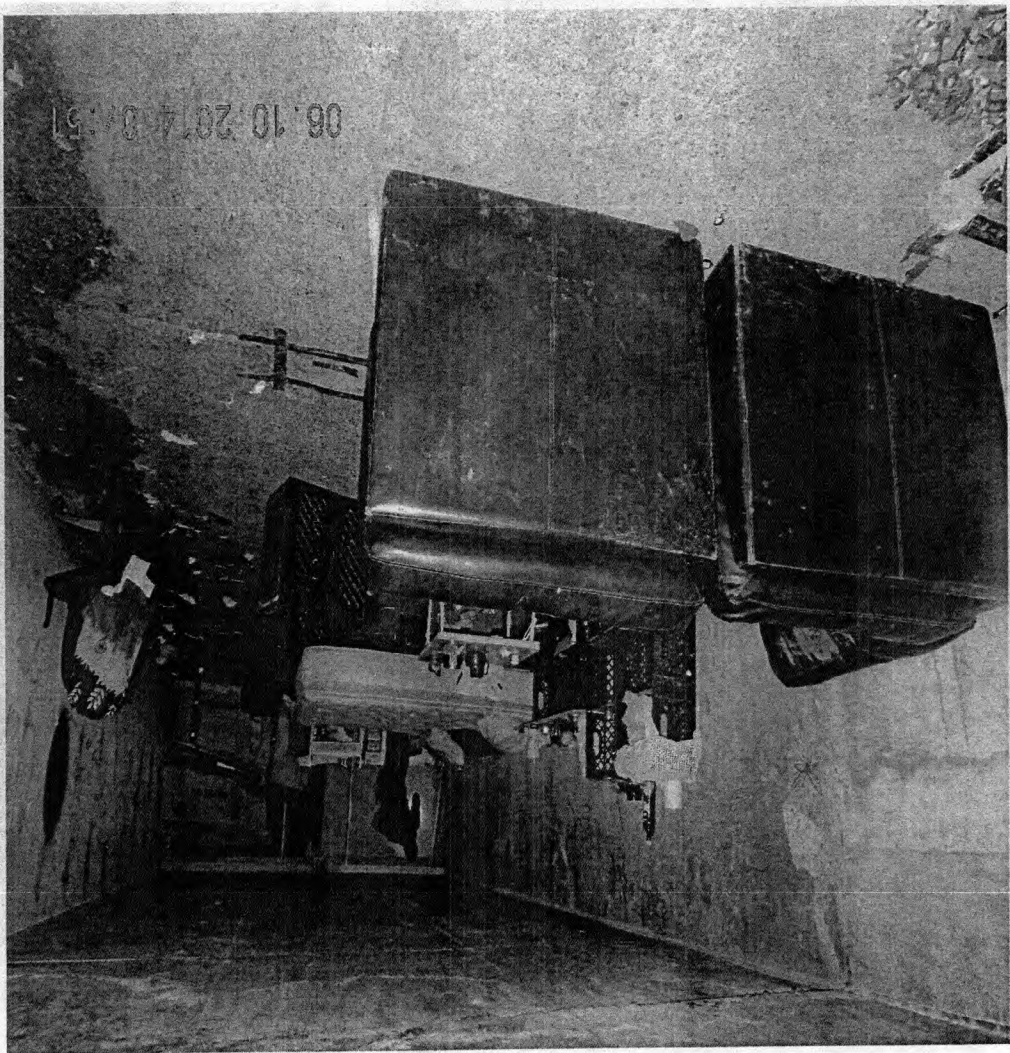
Location Map of Culvert Barrier Project Six Installations

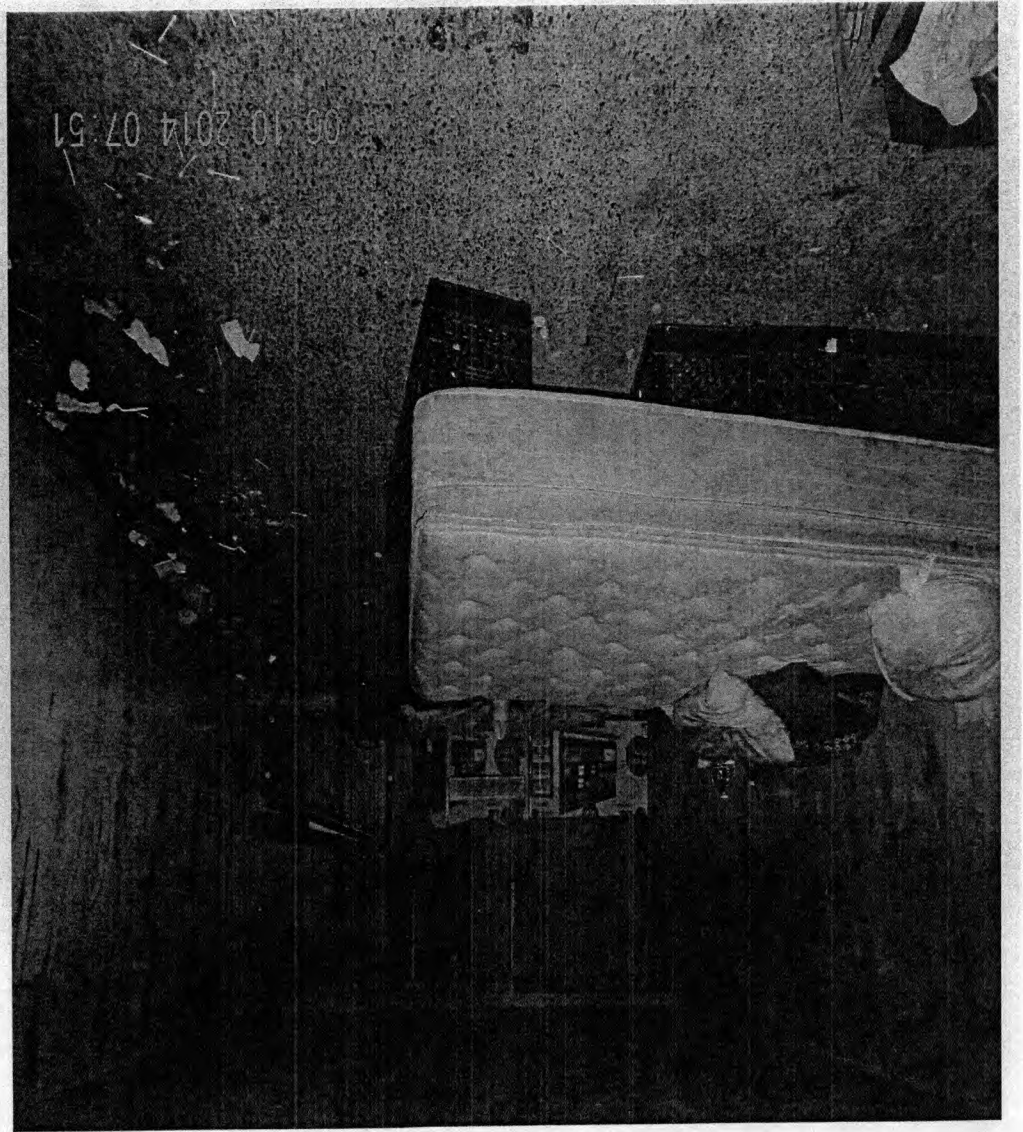


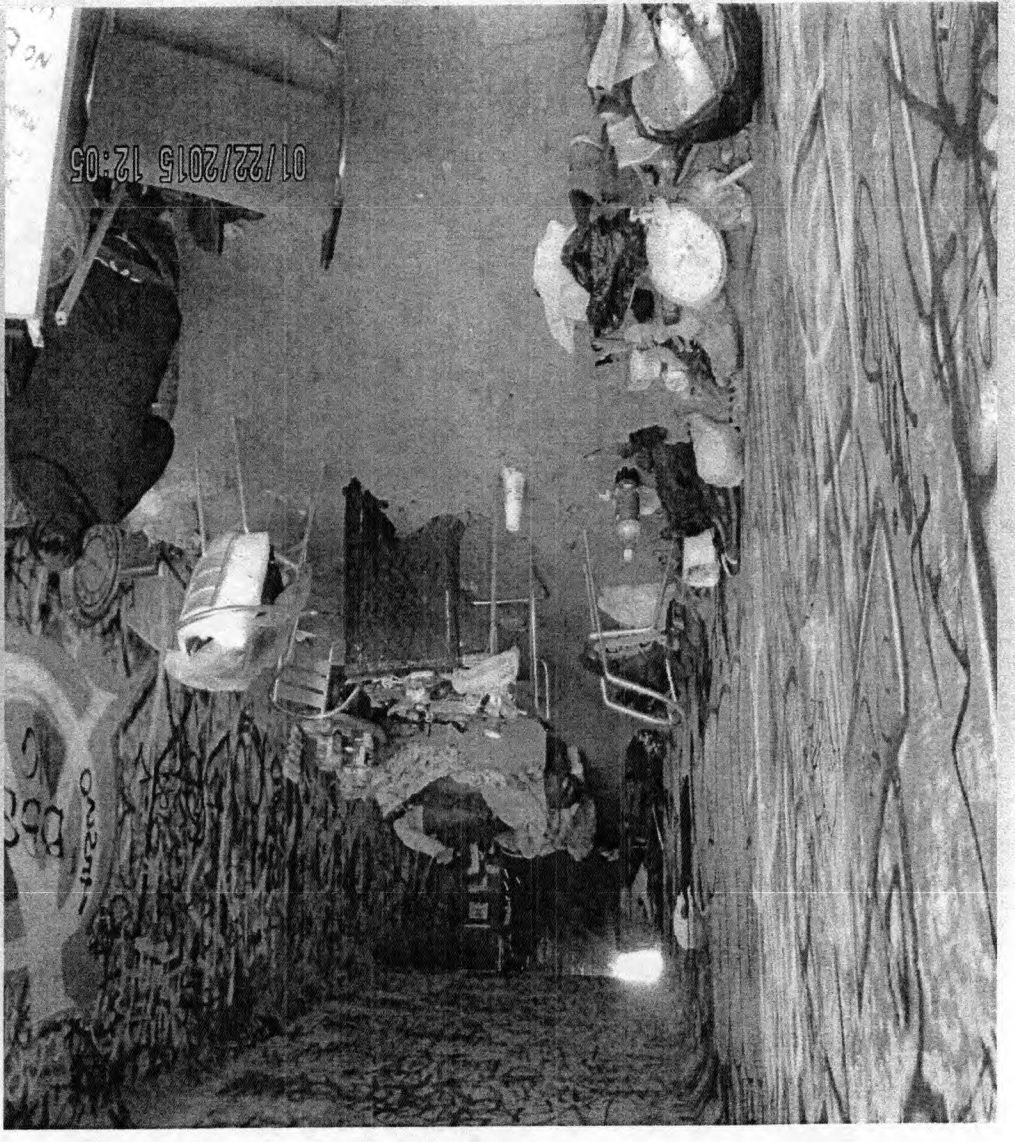
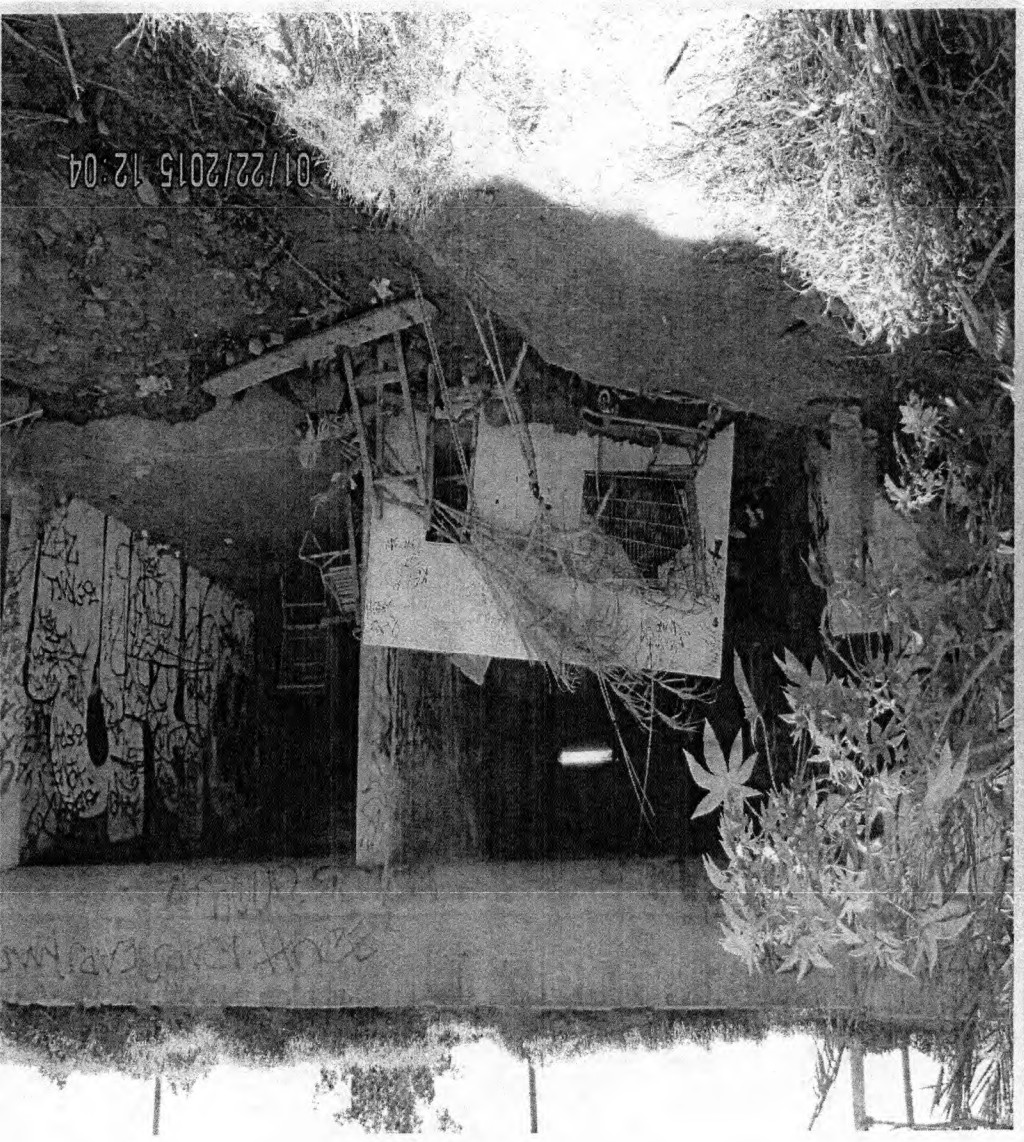
Culvert Encampment Clean-ups



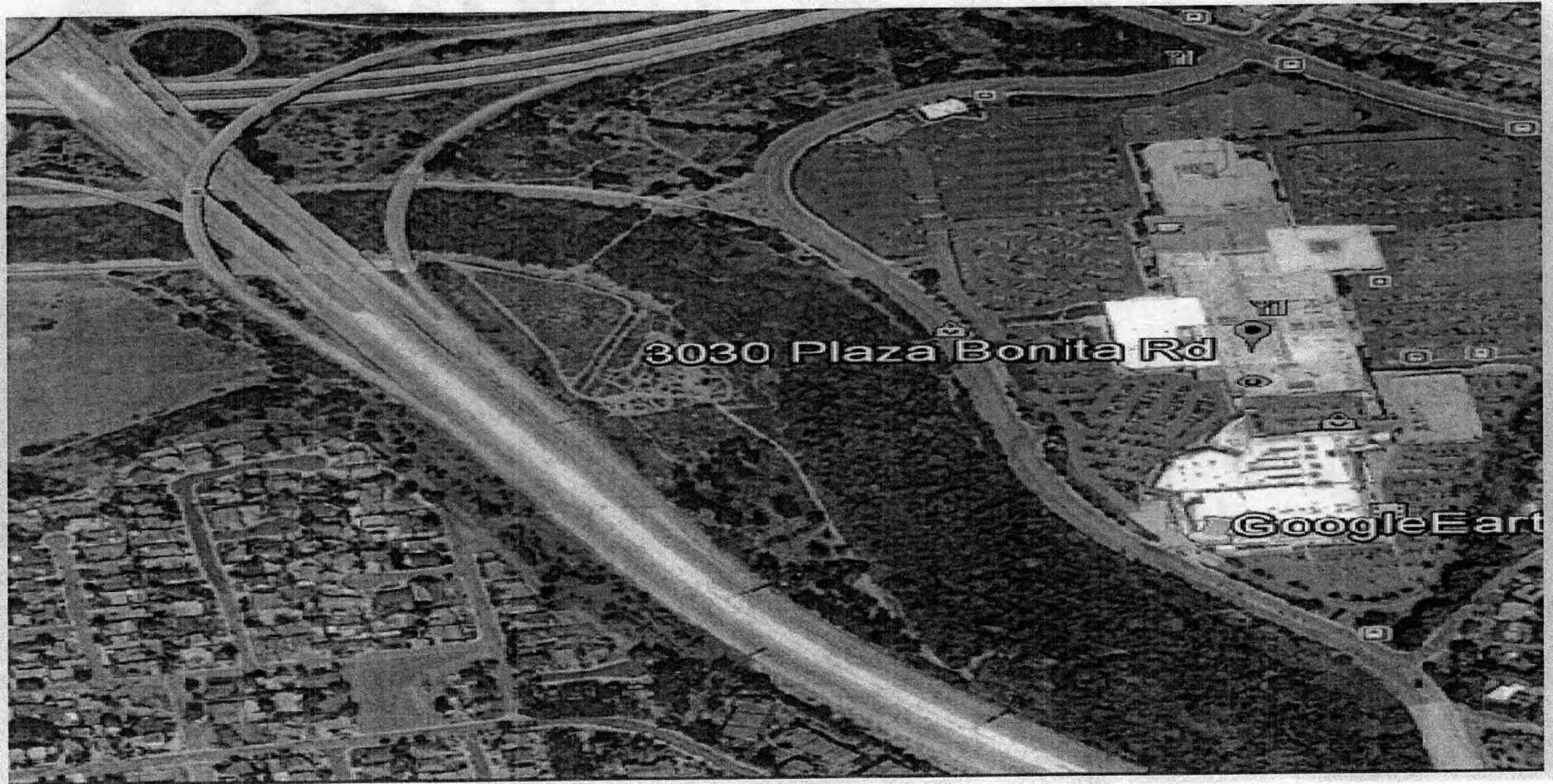








Plaza Bonita - Sweetwater Riverbed



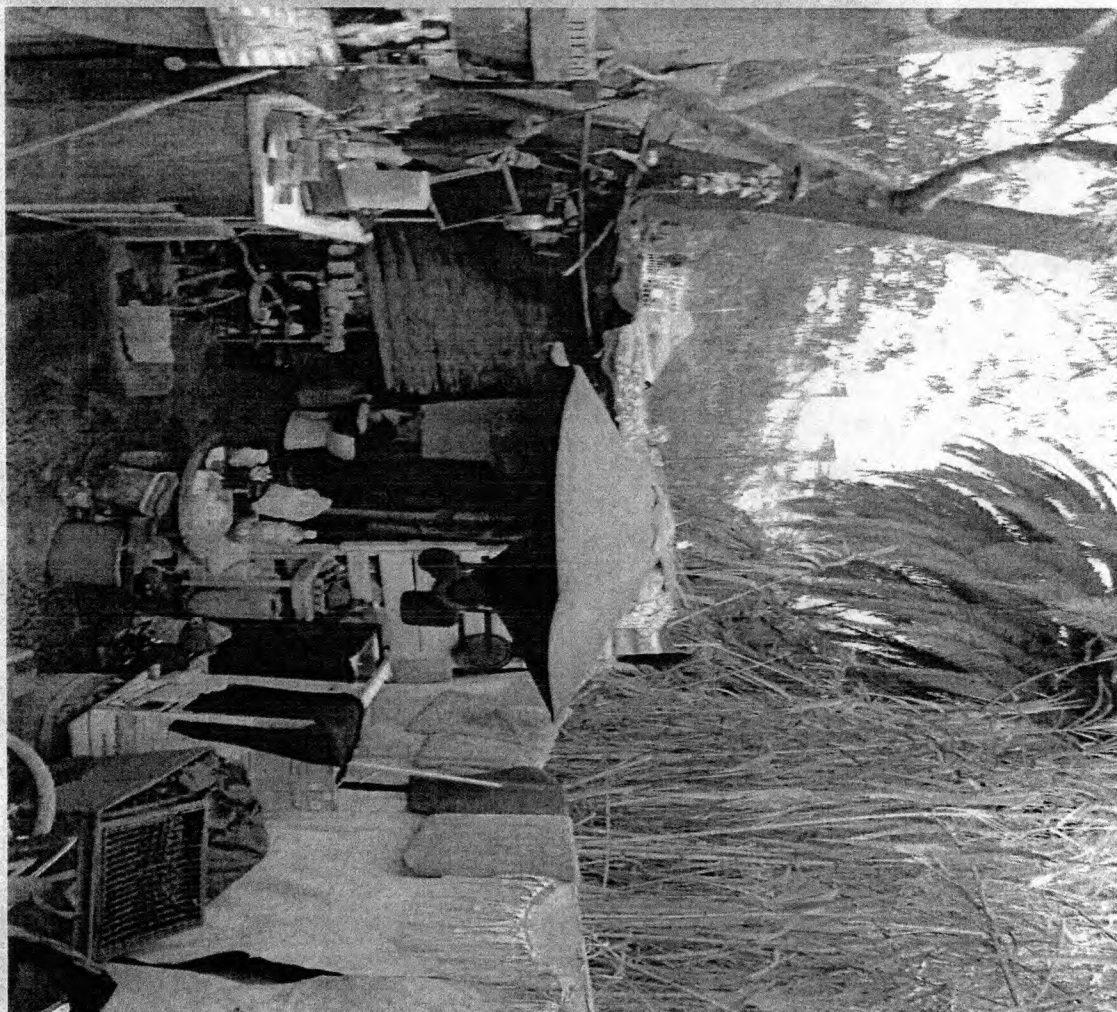
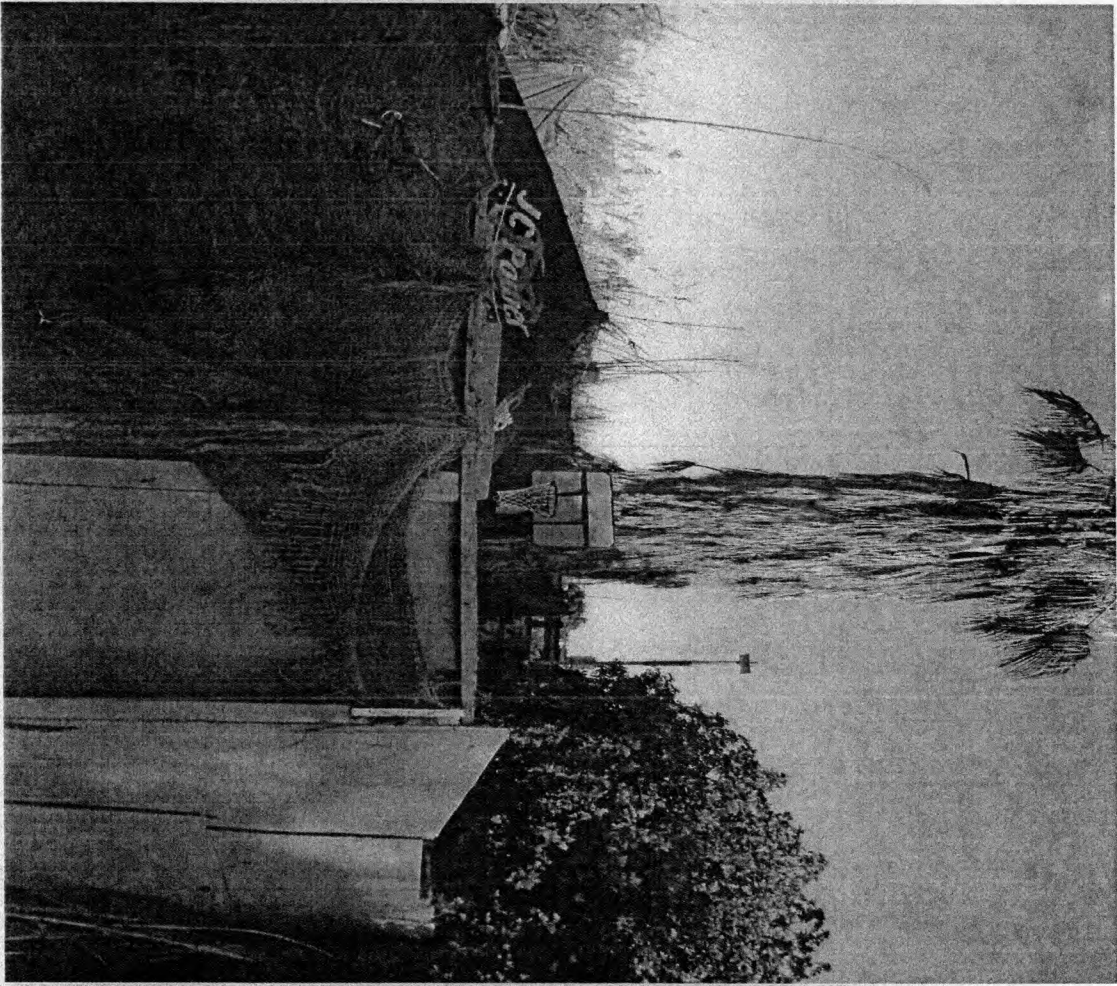


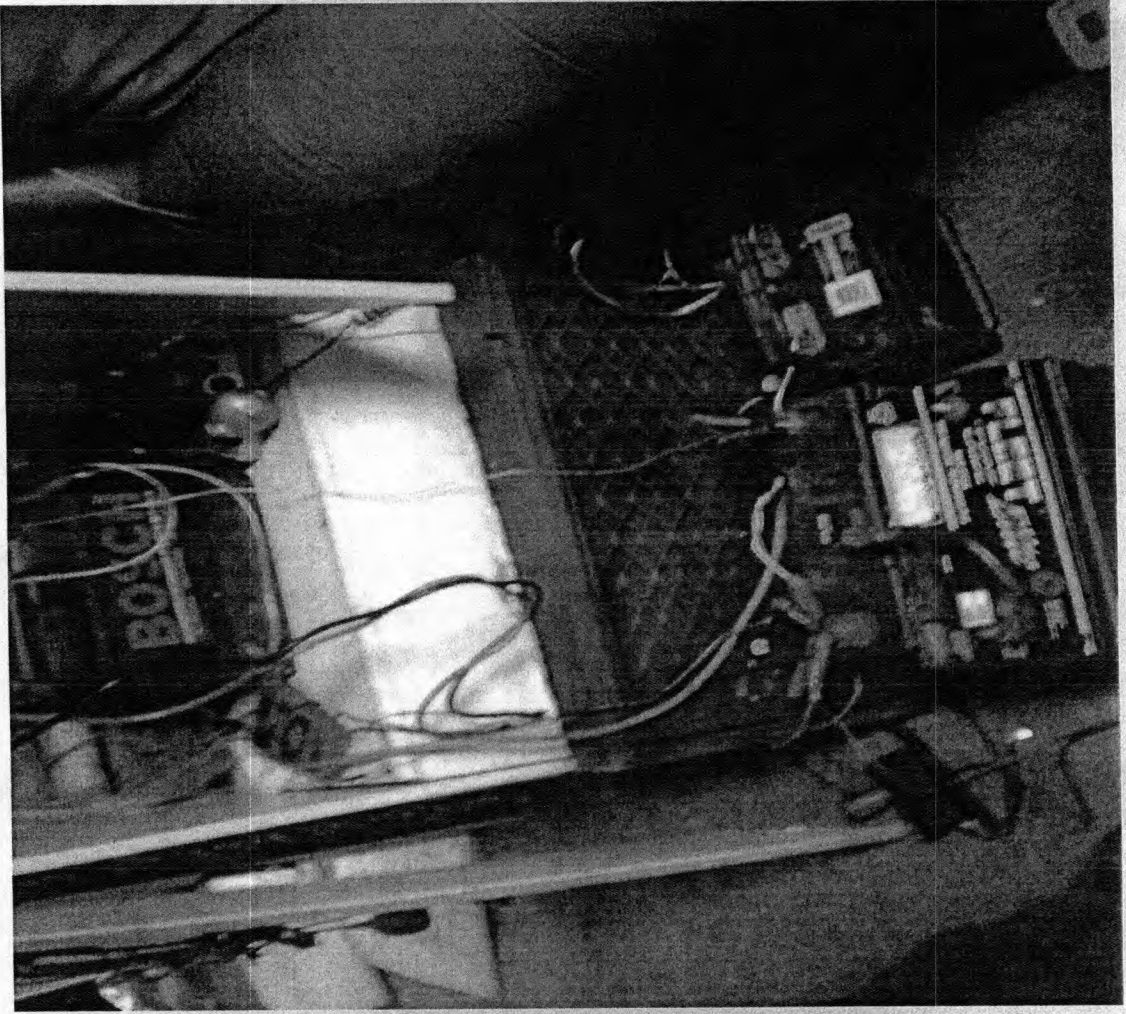
10 News

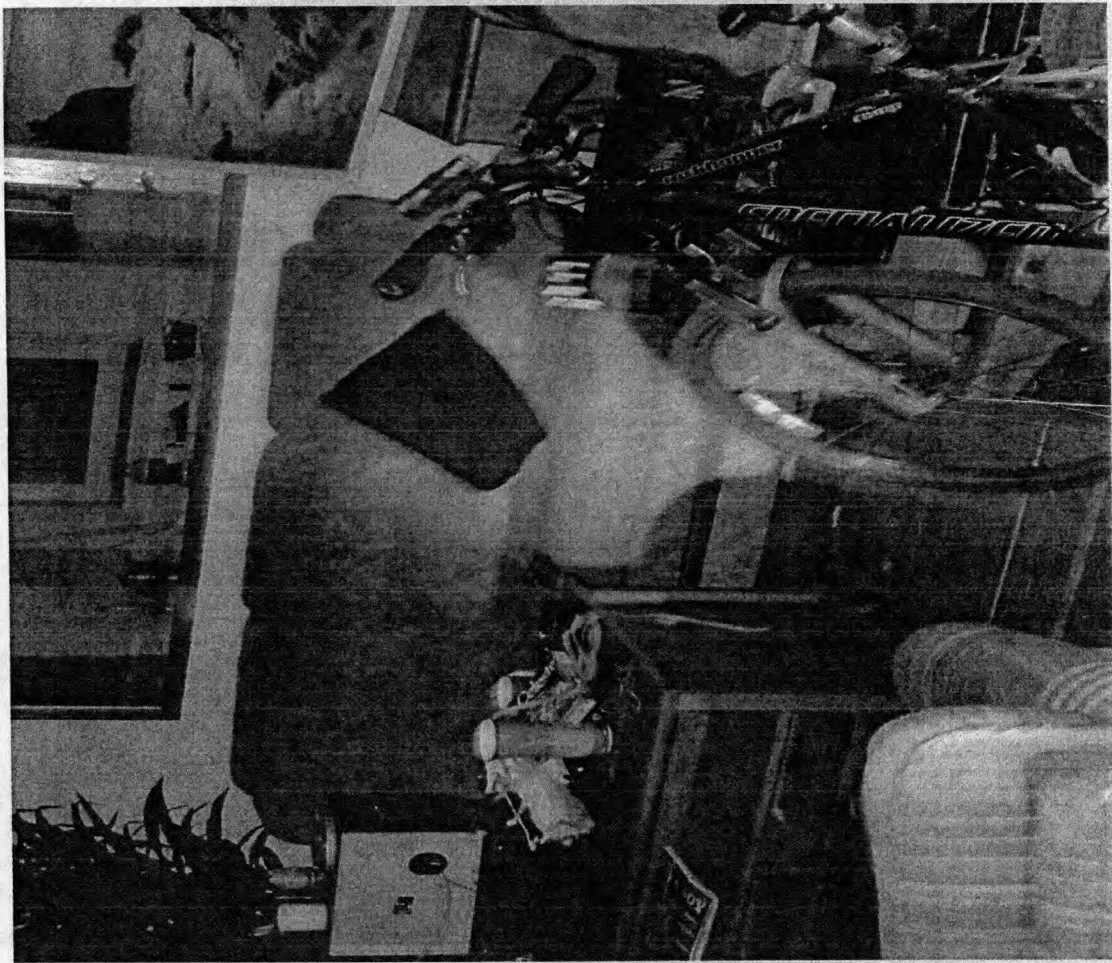
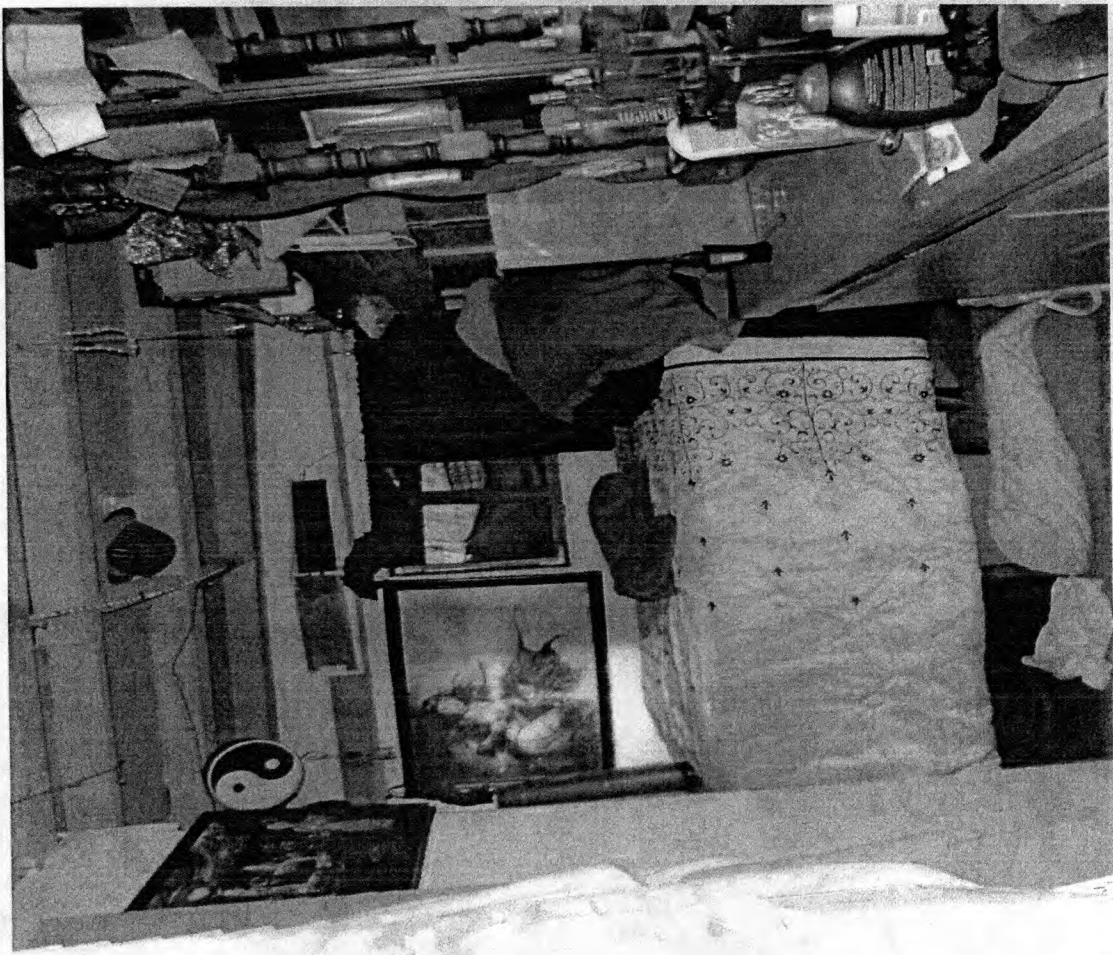
STRONG EARTHQUAKE JOLTS ALASKA
6.2 QUAKE HITS 80 MILES NORTHWEST OF ANCHORAGE

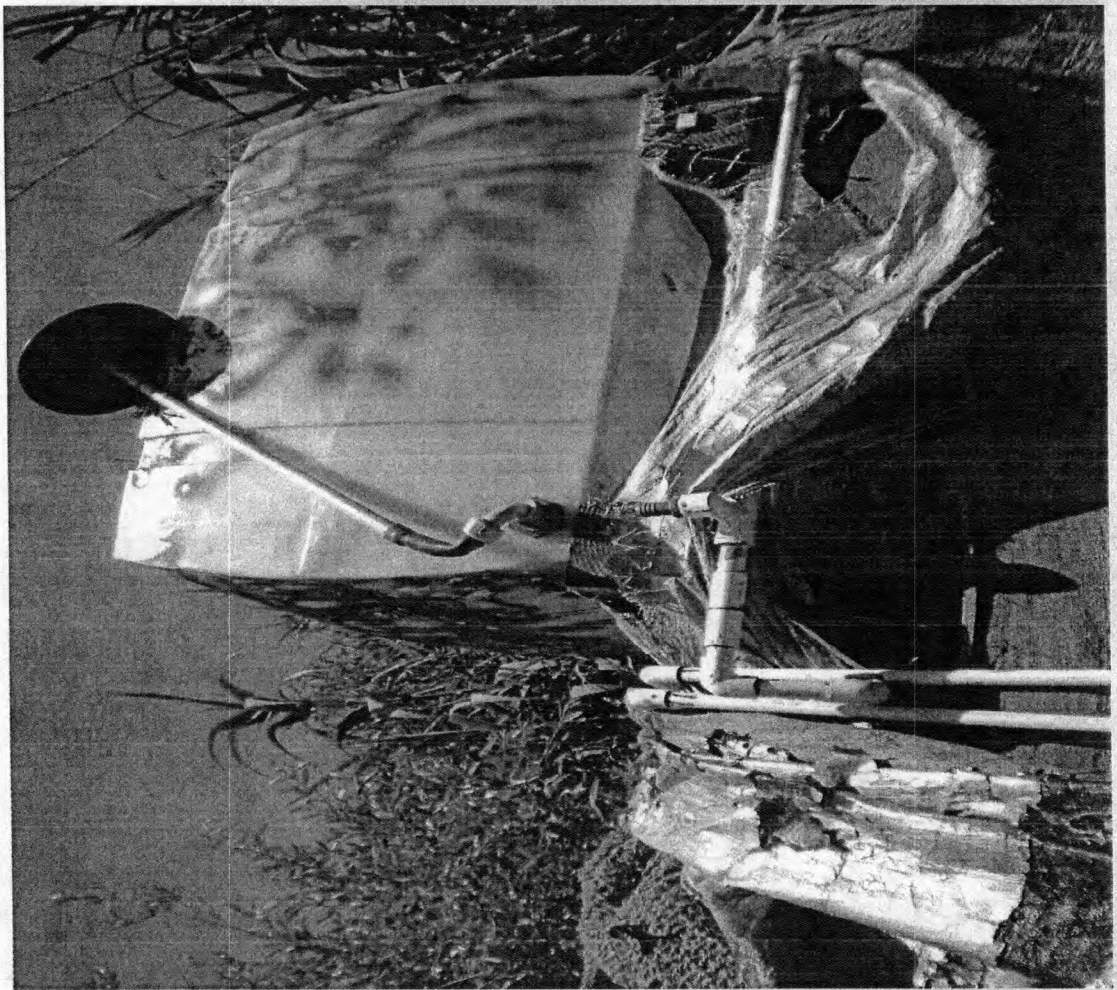
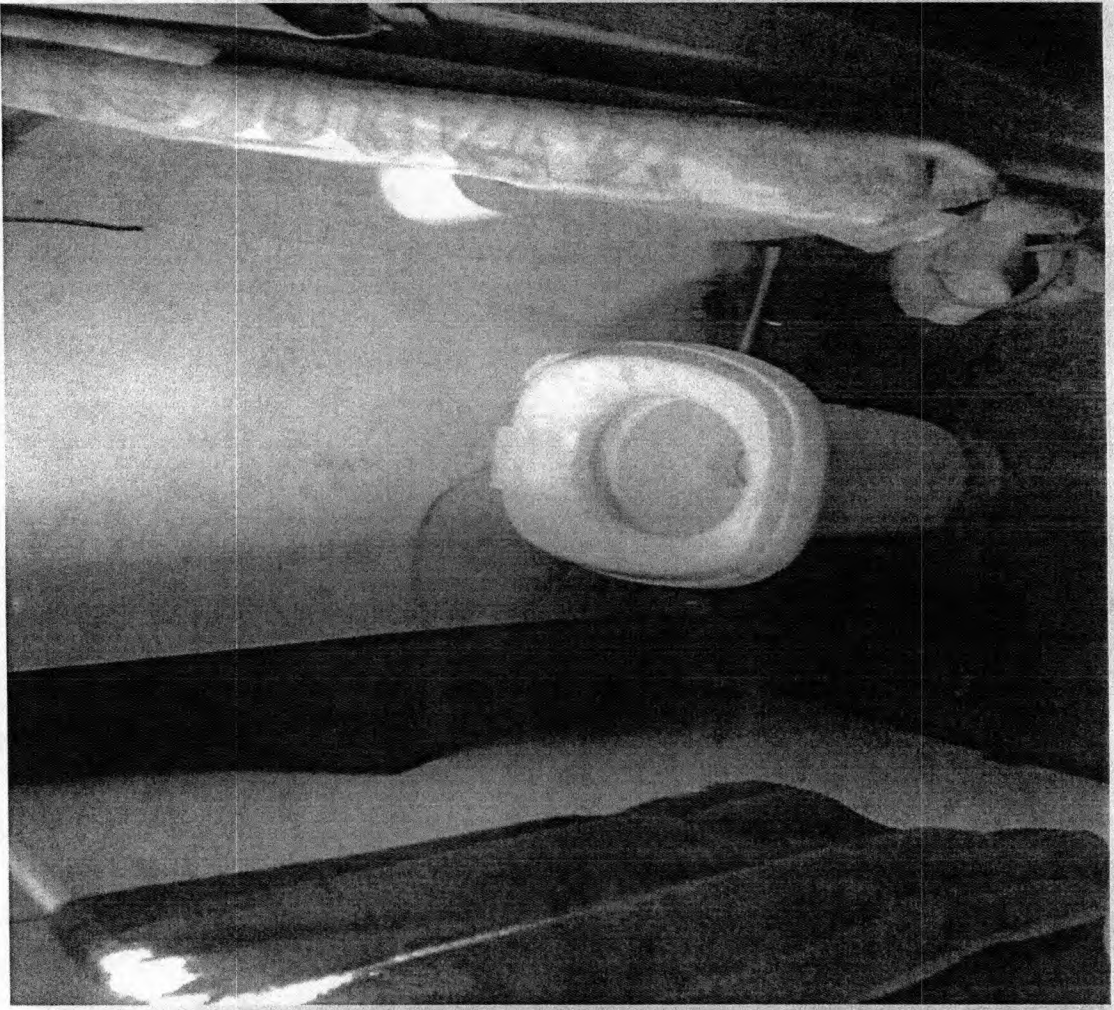


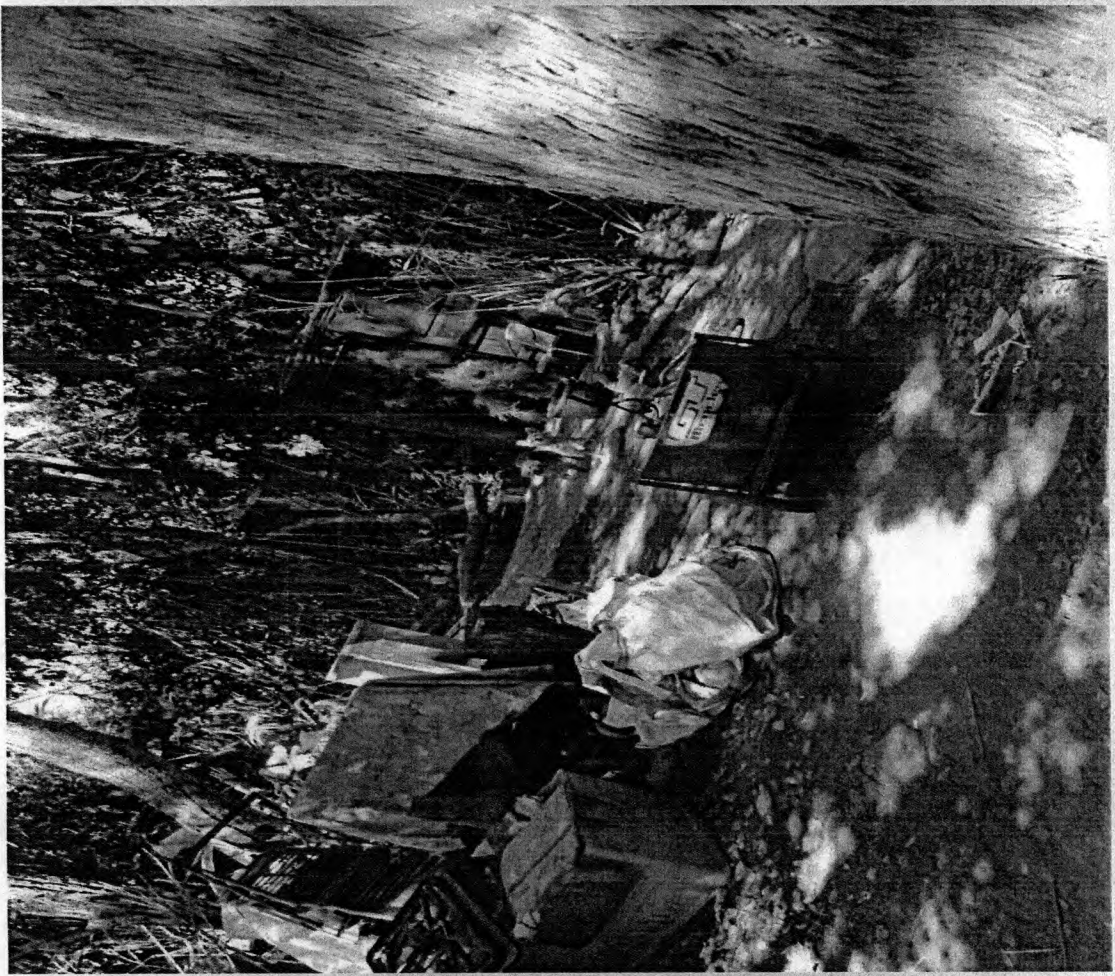
5:11 79°





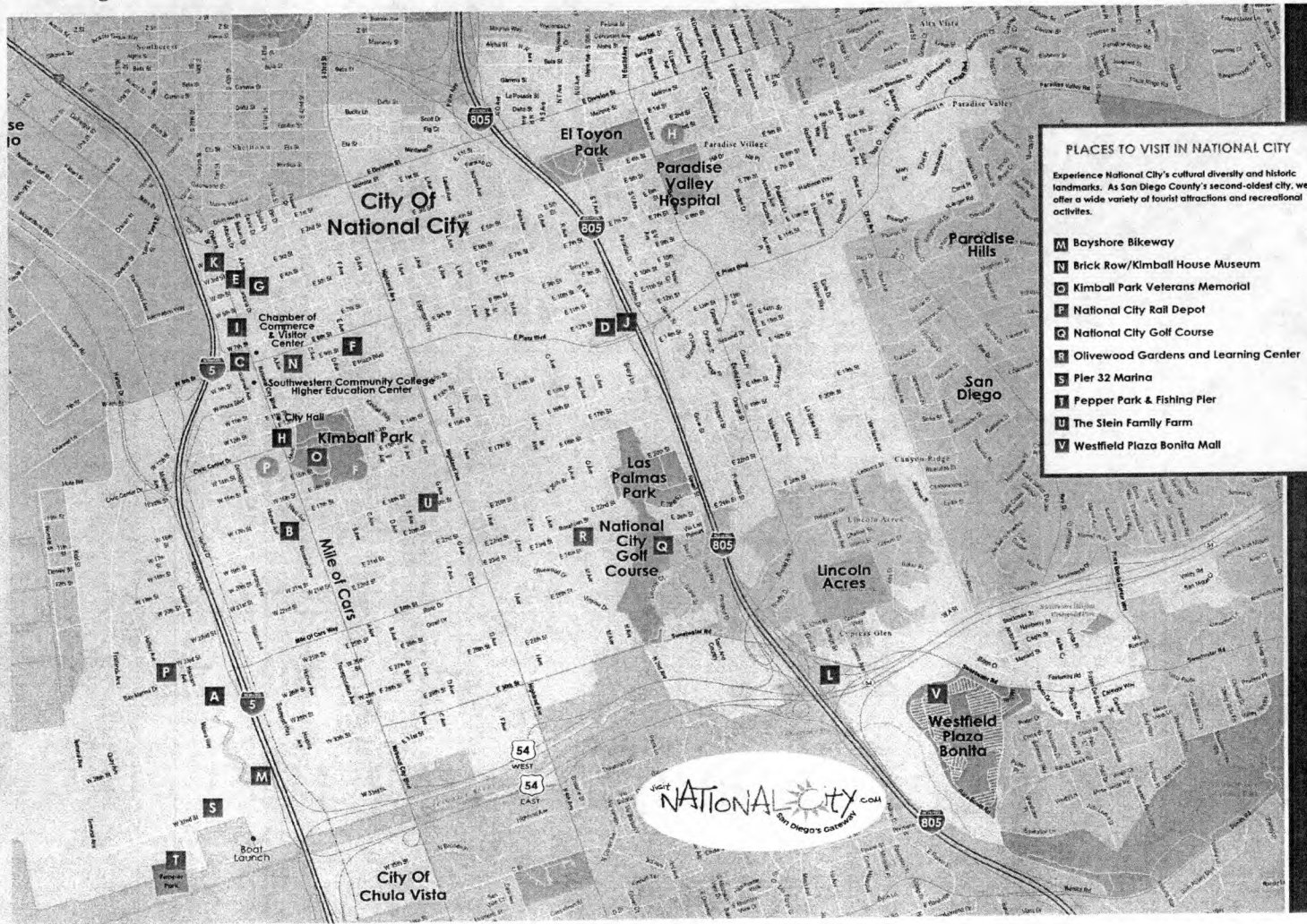








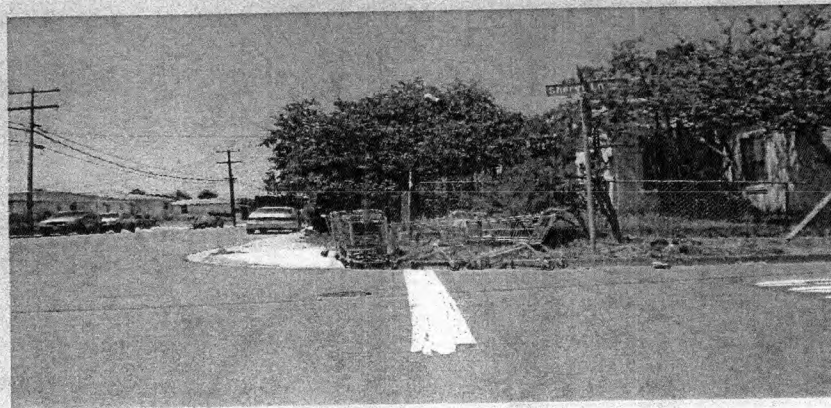
National City – Encampments on Streets, Public & Private Property



- PLACES TO VISIT IN NATIONAL CITY**
- Experience National City's cultural diversity and historic landmarks. As San Diego County's second-oldest city, we offer a wide variety of tourist attractions and recreational activities.
- A** Bayshore Bikeway
 - N** Brick Row/Kimball House Museum
 - C** Kimball Park Veterans Memorial
 - D** National City Rail Depot
 - Q** National City Golf Course
 - R** Olivewood Gardens and Learning Center
 - S** Pier 32 Marina
 - I** Pepper Park & Fishing Pier
 - U** The Stein Family Farm
 - V** Westfield Plaza Bonita Mall

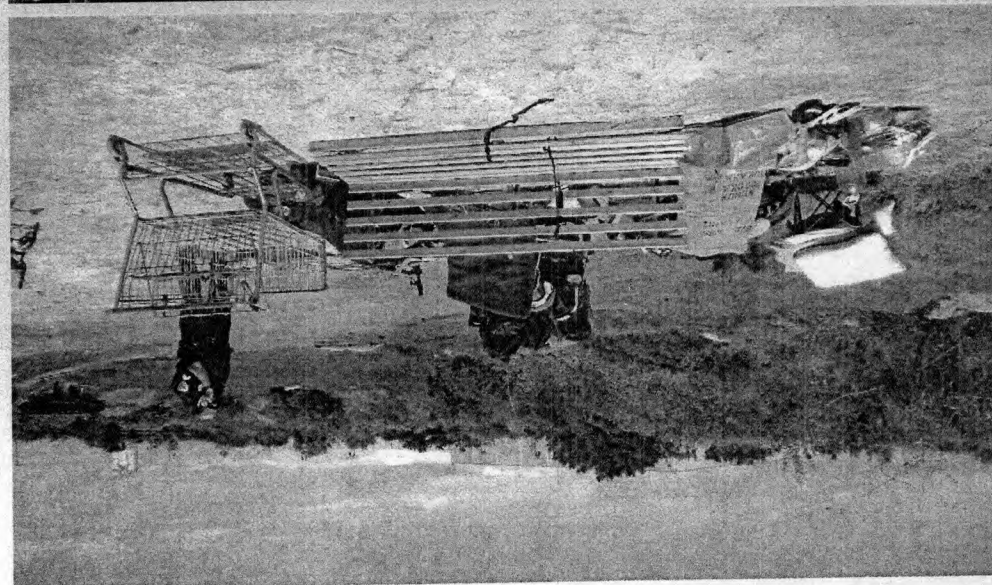
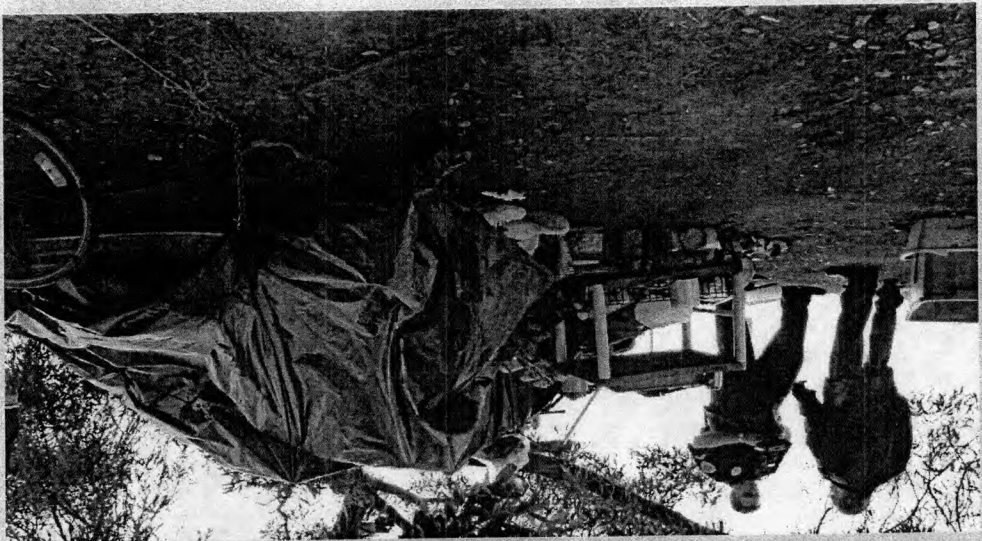
Shopping Cart & Recycling Impacts

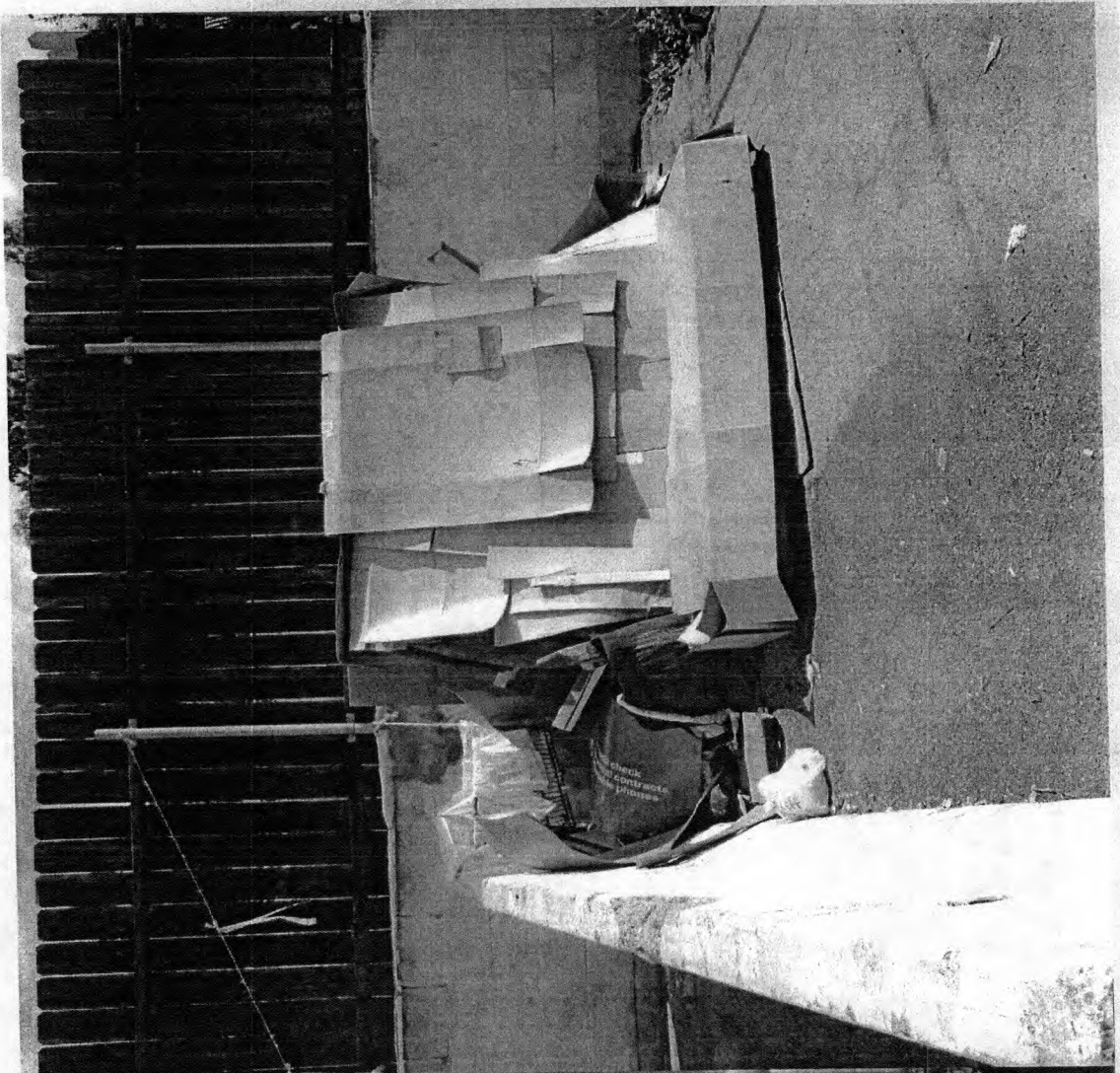
- September 2014-April 2015
- 133 Shopping cart cases

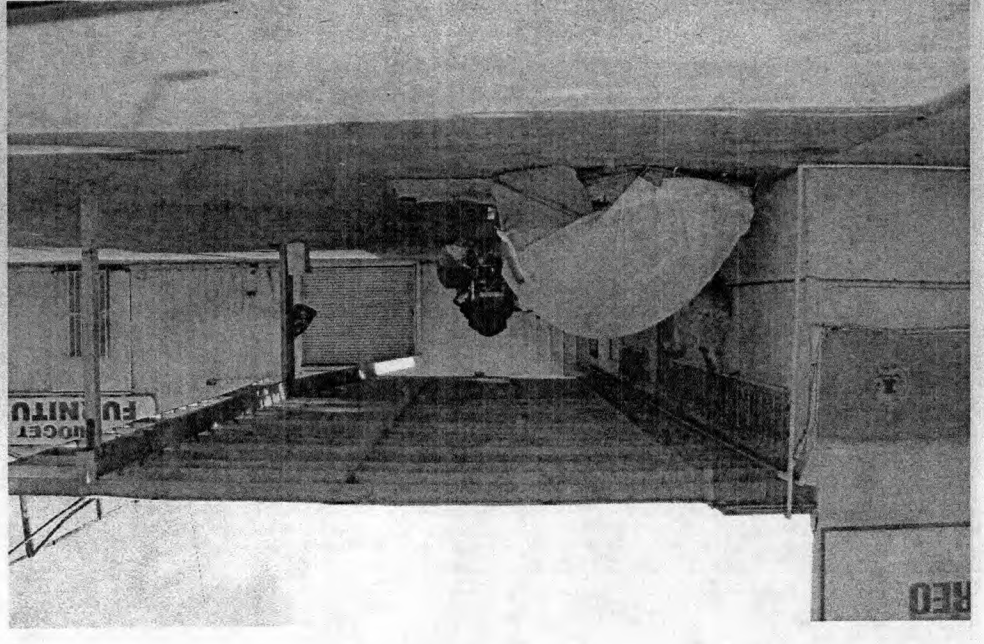
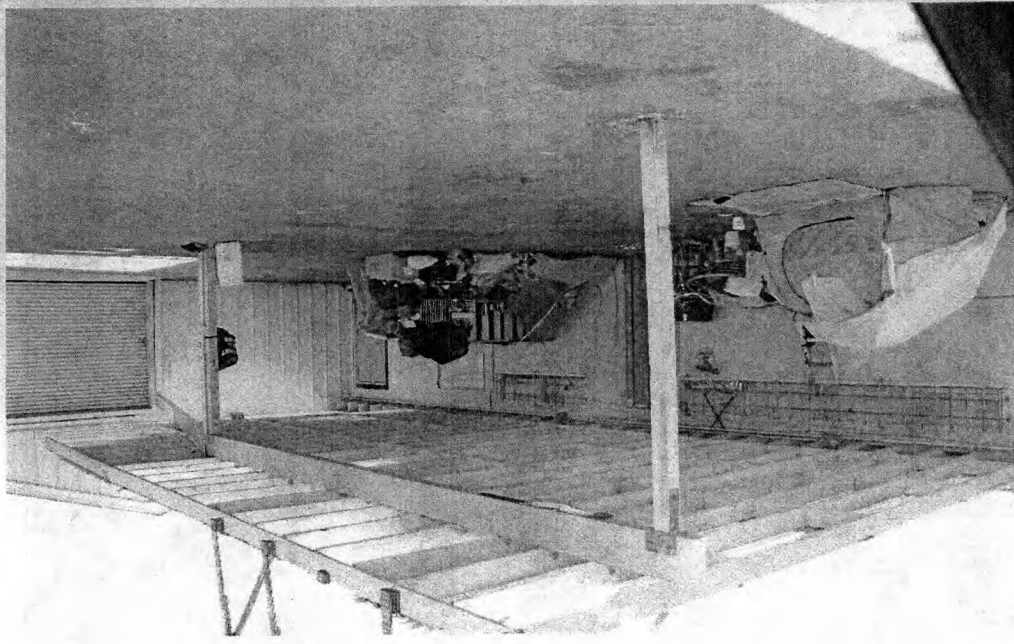
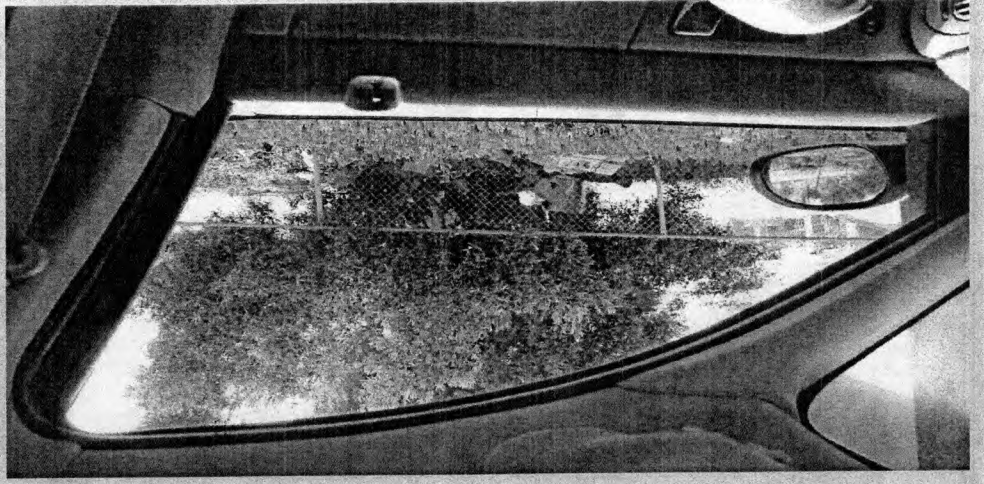
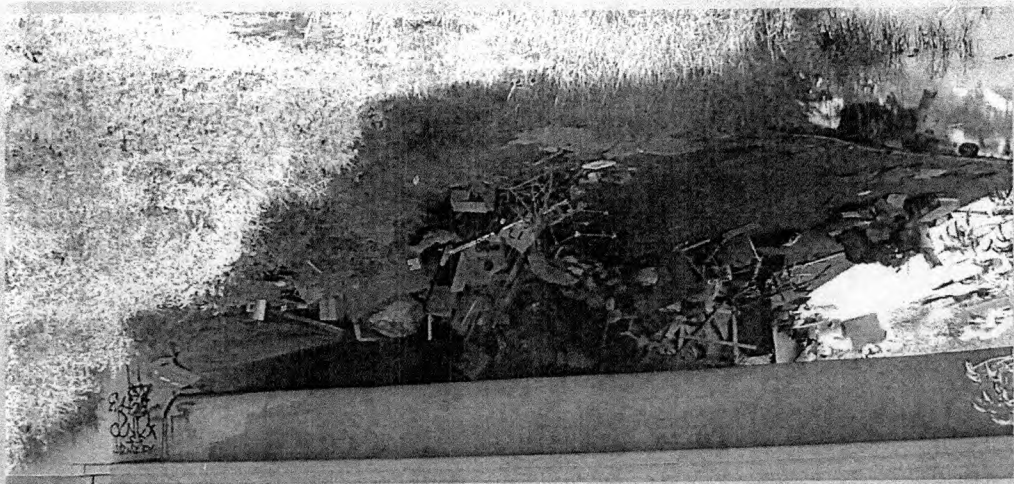


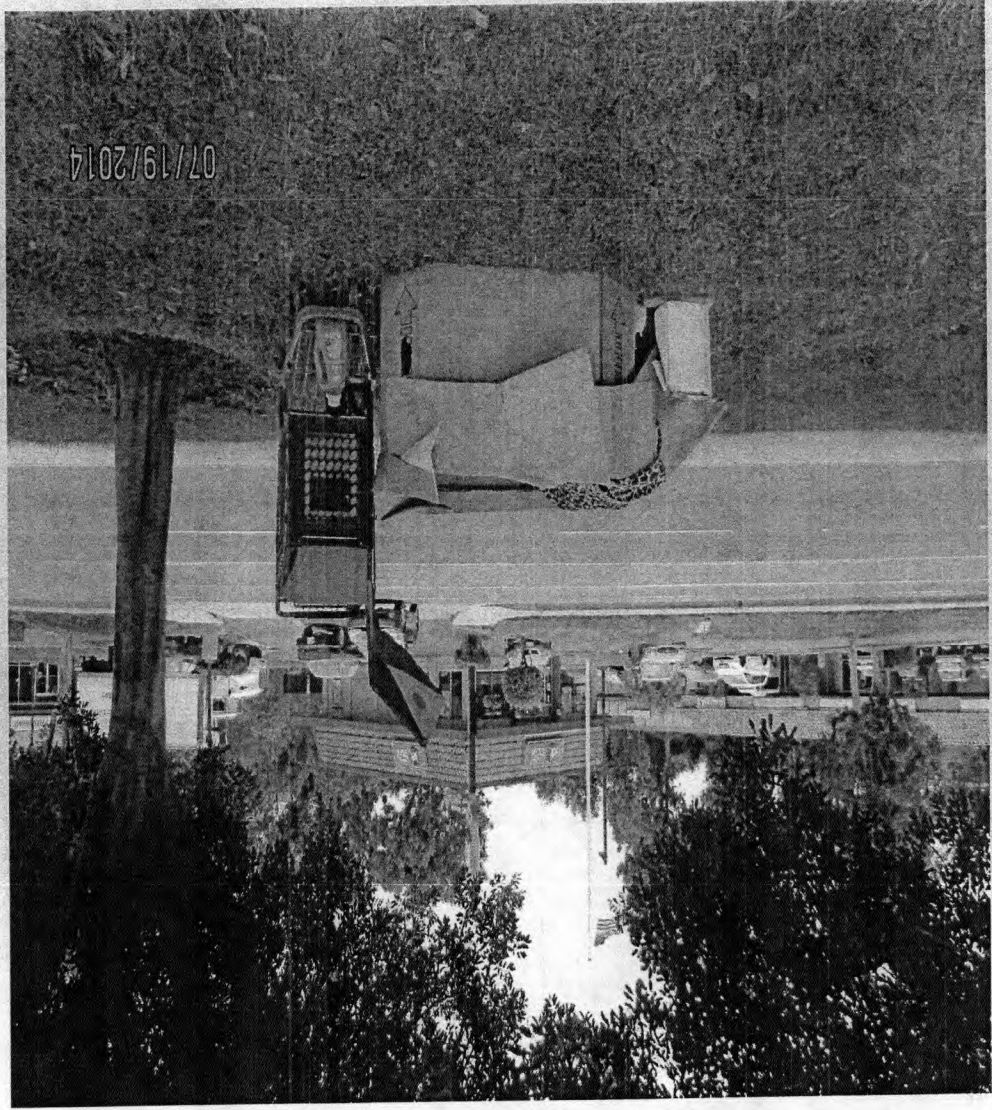
- Municipal Code Chapter 7.34
- Requires cart containment system
- Cart removal warnings
- Cart removal prevention employee training



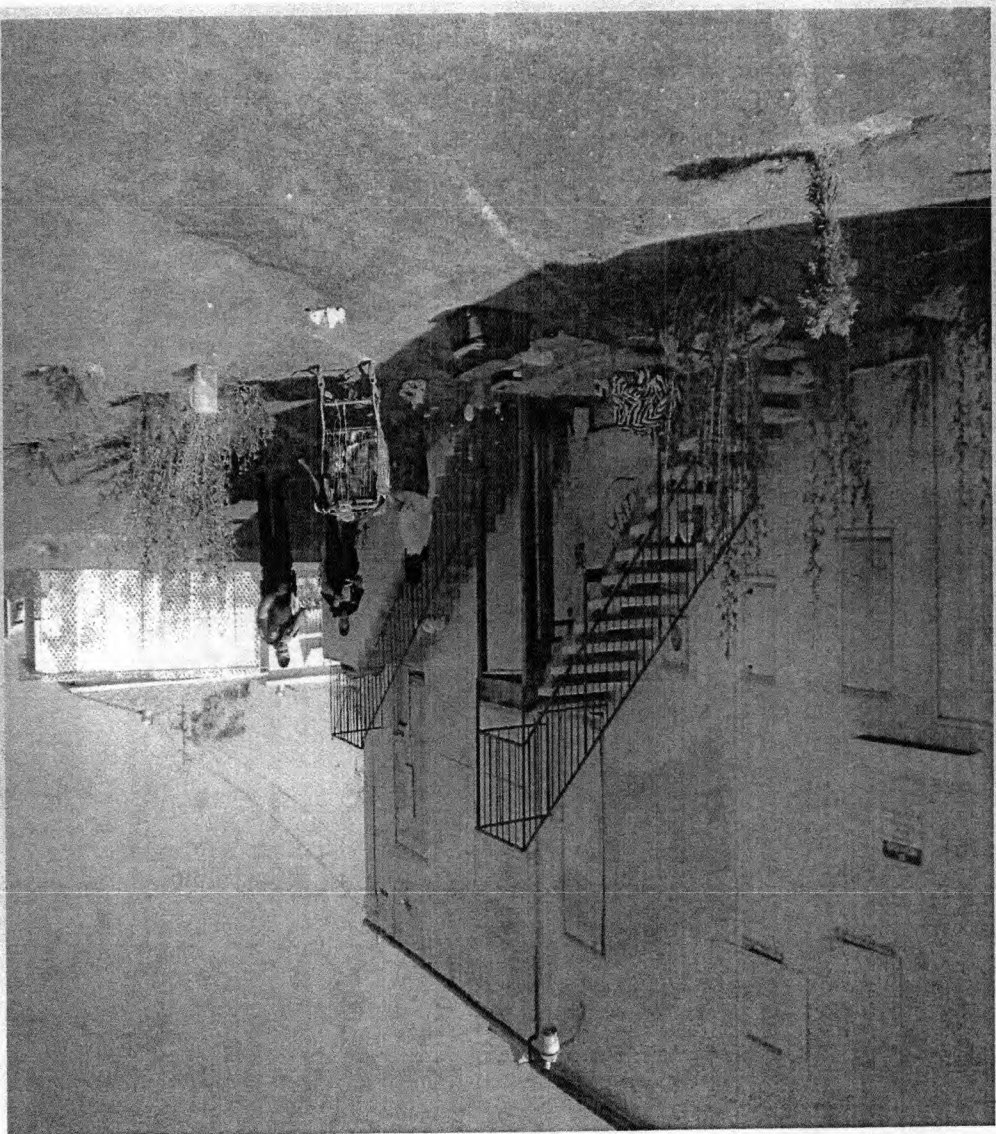


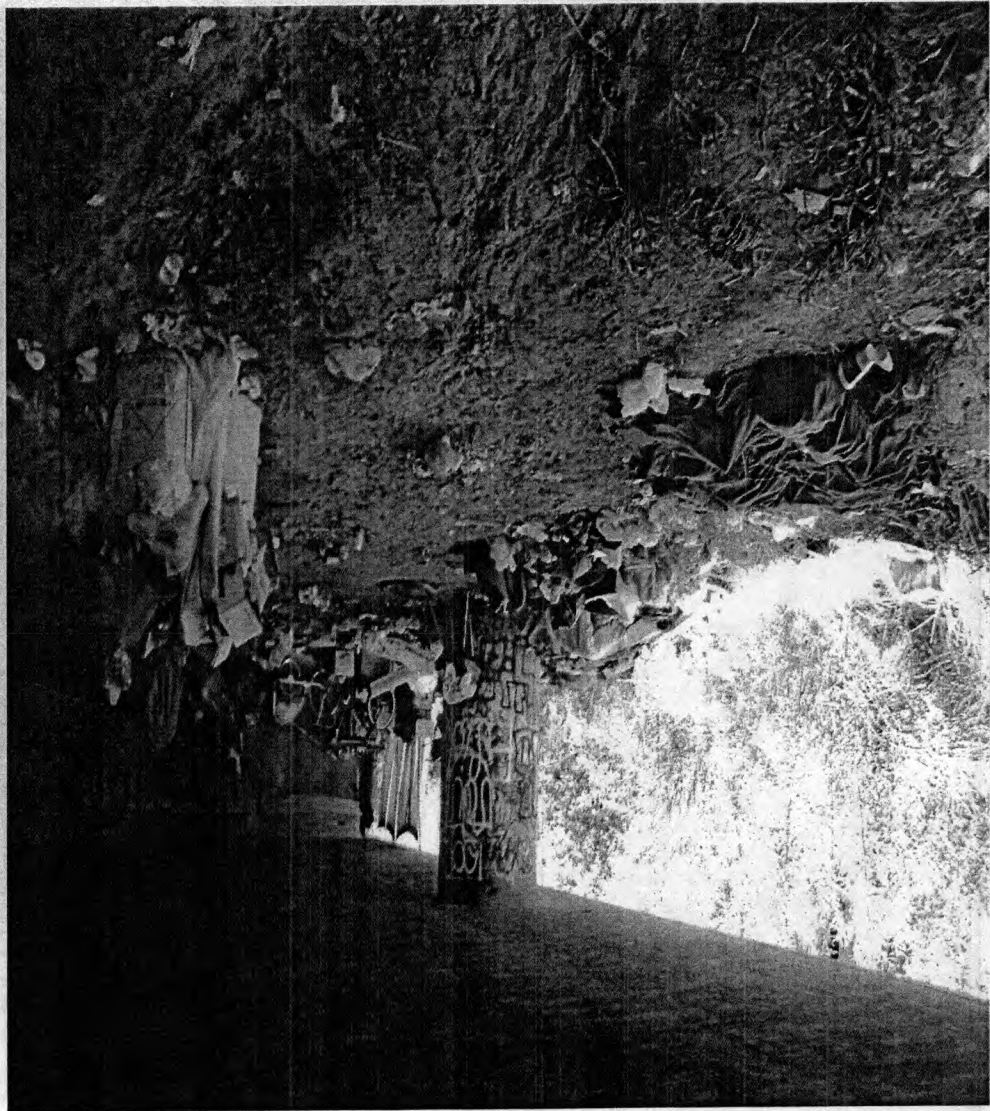
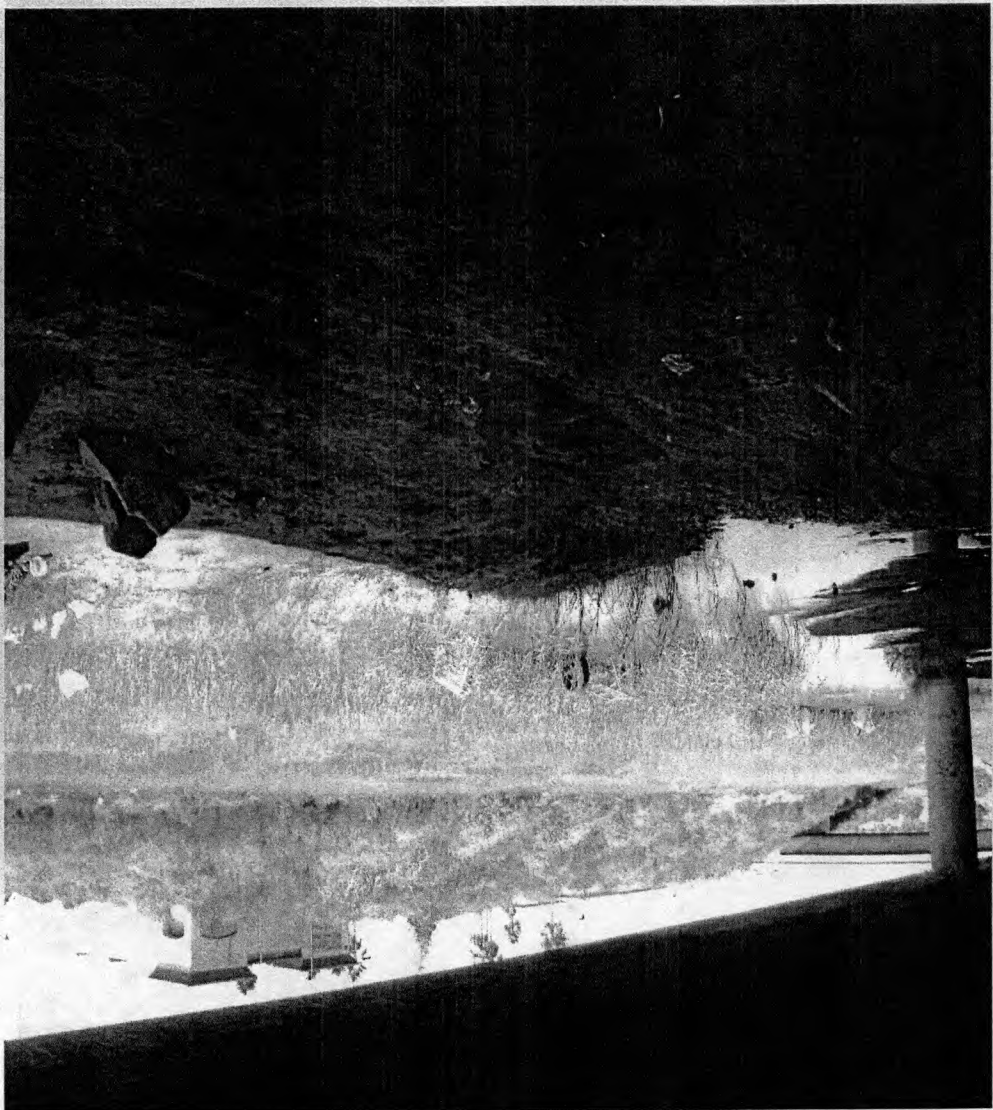


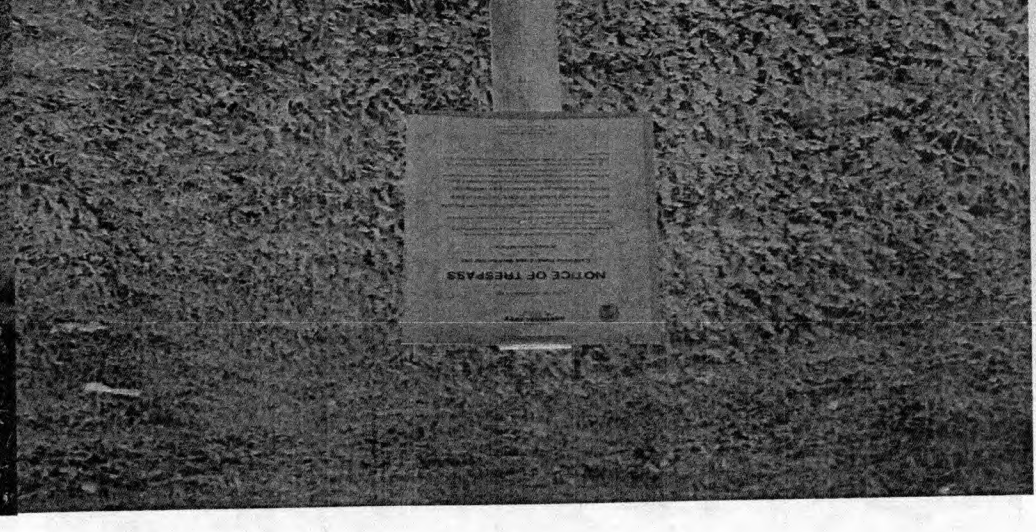
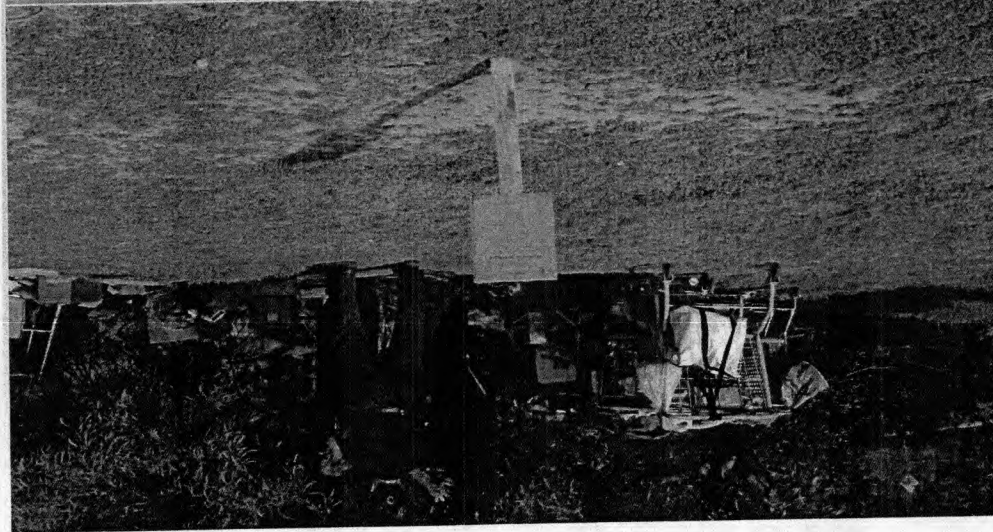
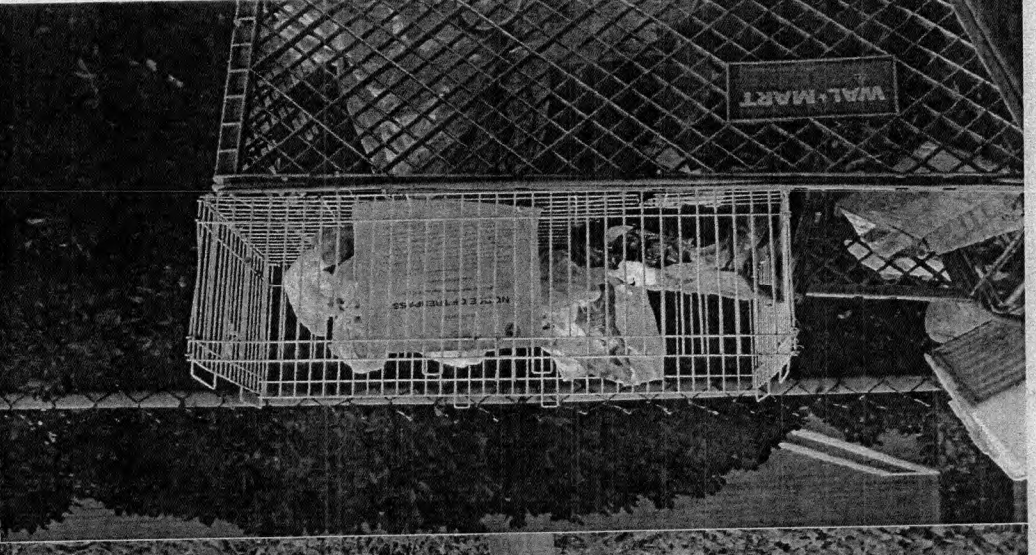
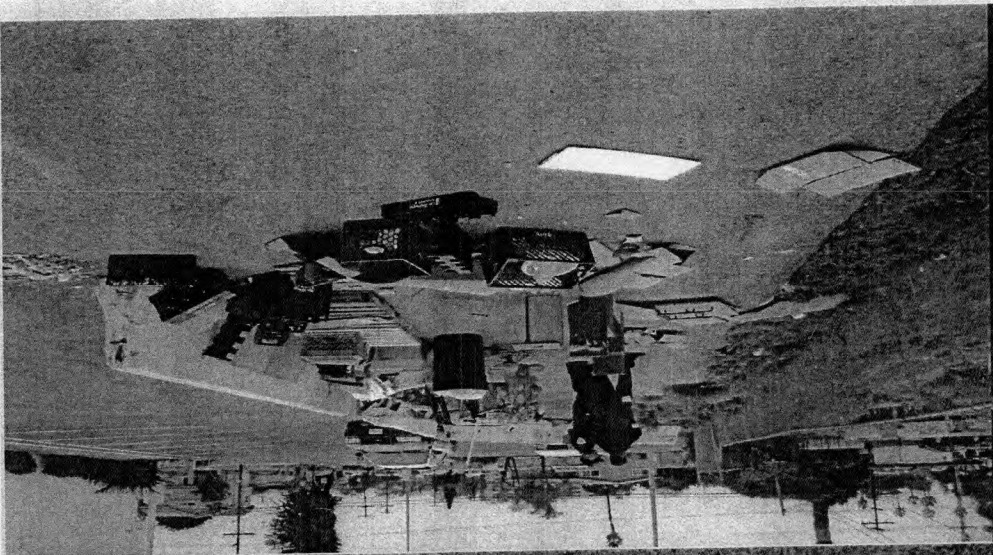


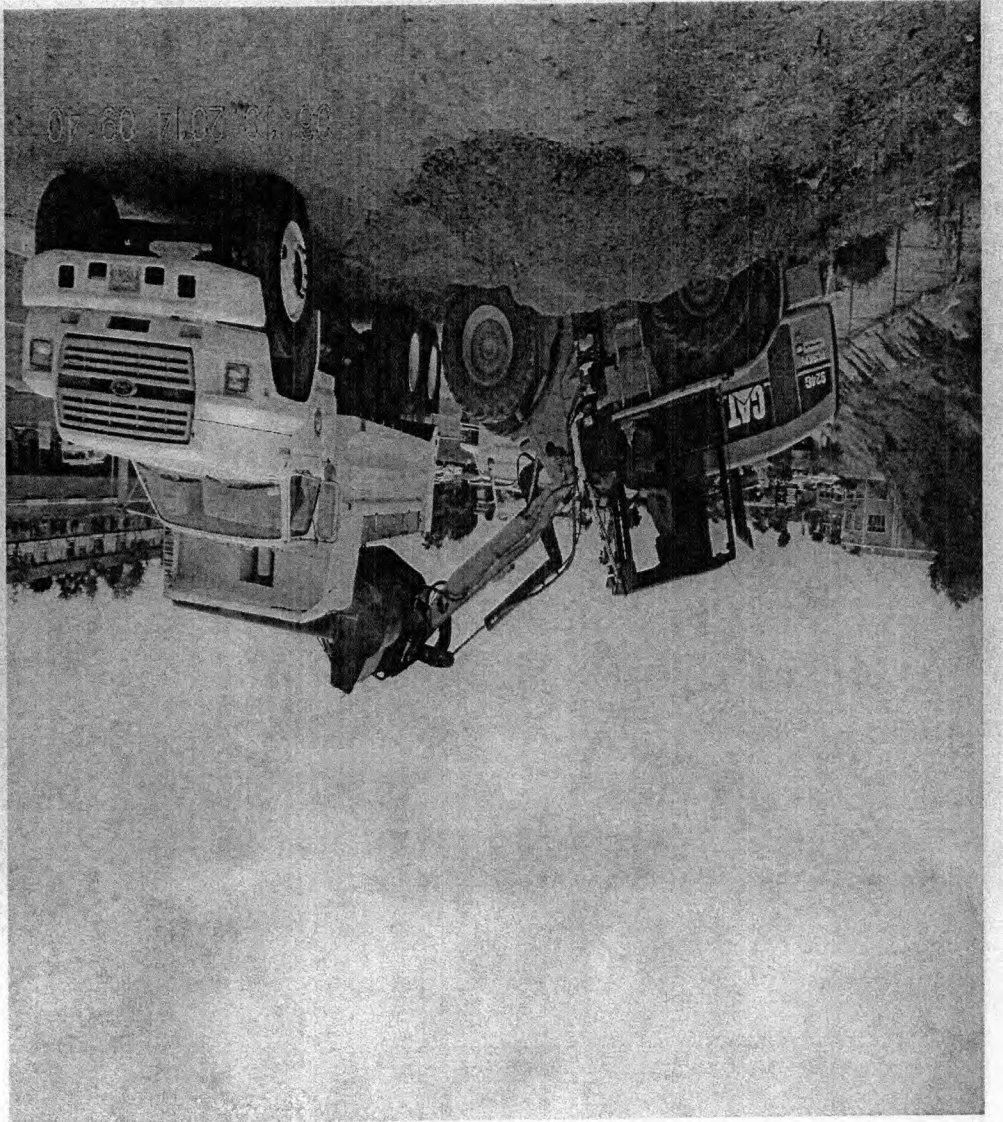
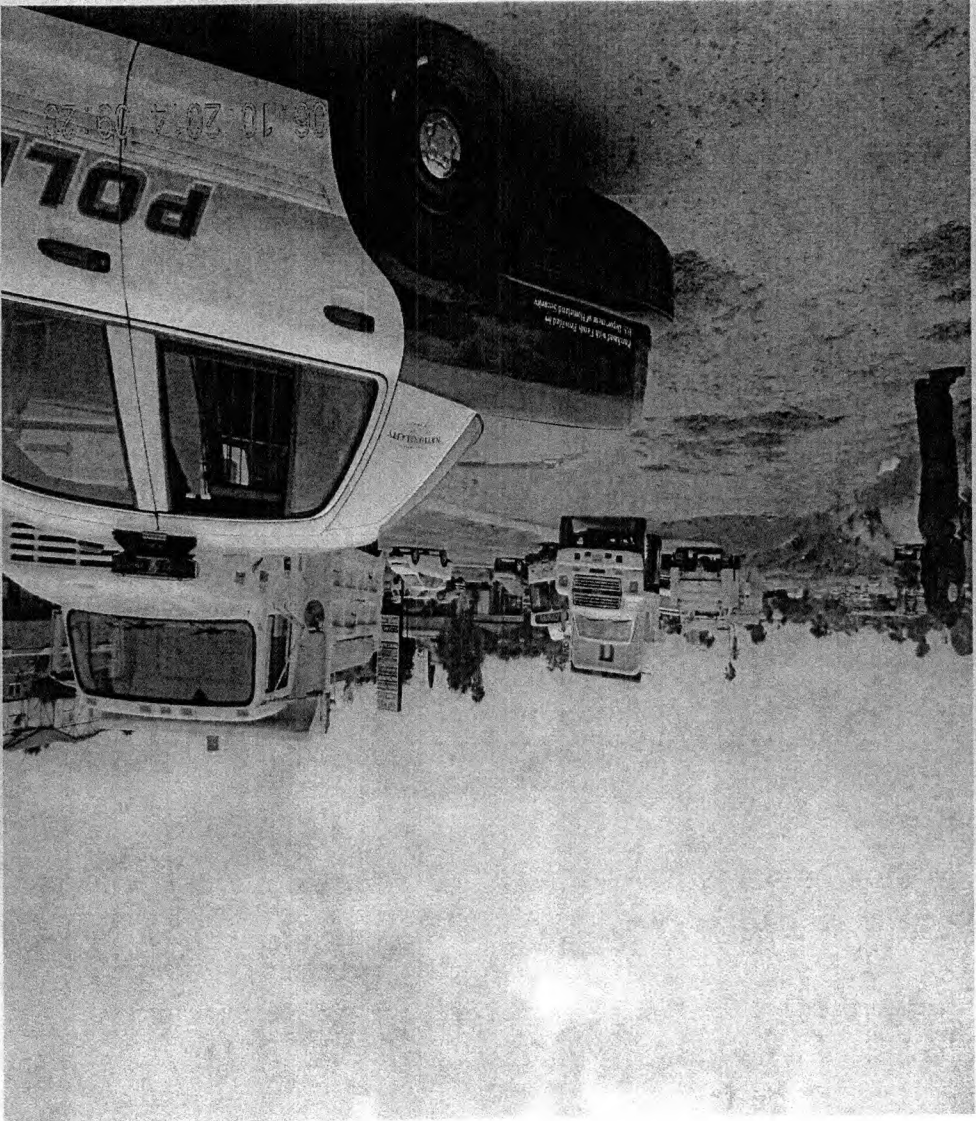


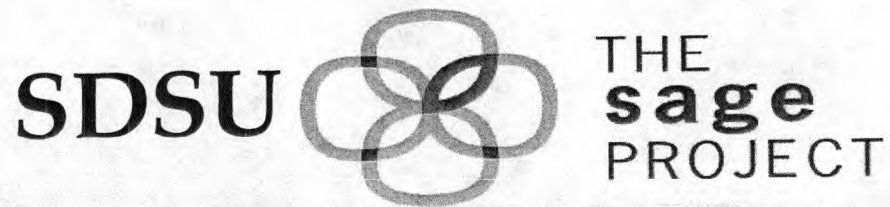






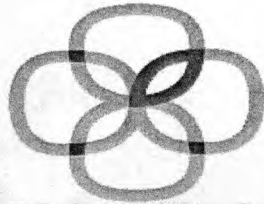






Professor Dr. Kristen Hill Maher
Associate Professor of Political Science
Introduction to Public Policy Analysis
Political Science 603
San Diego State University
• Class Project & Student Research

SDSU



THE
sage
PROJECT

- Student Presentations
 - Lori Jones
 - Aline Scherrer
- Final Class Overview
 - Dr. Kristen Hill Maher

Closing & Staff Recommendations

- Continue Research into Pilot Program with Alpha Project
 - Program would provide the following services
 - Homeless Outreach
 - Mental health and vulnerability assessments
 - Hygiene items, blankets and other engagement incentives
 - Transportation provided to access services
 - Referrals and housing (when available)
 - Access to all Alpha Project Programs
 - Detailed reporting – location, demographics, mental health assessment results, placement rates, referrals and resources given
 - Encampment clean-up services
 - Service contracts vary depending on scope of work, estimated cost for a 6 month period would be approximately \$50,000

Continued -Closing & Staff Recommendations

- Continue working with Housing & Grants Department to research programs and any available funding
- Establish a Fiscal Year 2016 budget for Homeless Outreach services
- Enhance and continue involvement with mainstream agency's and organizations involved with homelessness like- (RTFH) Regional Task Force on the Homeless

Public Comments

Council Questions & Direction