



Homelessness Workshop

April 21, 2015

Introduction

City Manager – Leslie Deese

Director Neighborhood Services Department (NSD) - Armando Vergara

Workshop Overview

- **Data-Review, Challenges and Ground Rules**
 - Strategic Plan-Homeless Outreach Objective, adopt a comprehensive long term strategy
 - Limitations of city resources, departments like police, fire, code enforcement and public works & parks
 - Impacts to Public Health, Safety and Welfare
 - Availability of existing resources and programs
 - SDSU Sage Presentations
- **Public Comment**
- **Council Direction/Comments**

Challenges

- Homelessness is a critical issue impacting multiple sectors of our community
- Coordination of resources, regionally, statewide and nationally
- Addressing the underlying causes of homelessness
- Lessening the negative impacts of homelessness on individuals, families and our communities

Workshop Ground Rules

- Interrupt for clarifying questions
- Hold comments and direction until after public comment
- “Parking Lot” for topics that need longer discussion and further analysis

Definition of Homeless

- Homeless - An unsheltered homeless person residing in a place not meant for human habitation, such as cars, parks sidewalks abandoned buildings (on the street) or a sheltered homeless person residing in an emergency shelter, including temporary emergency shelters only open during severe weather, or a sheltered homeless person residing in transitional or supportive housing for homeless persons who originally came from the streets or emergency shelters.

We All Count – Regional Task Force on the Homeless

- Executive Director – Dolores Diaz
- 2014 San Diego Regional Homeless Point-In-Time Count (PITC)
 - January 23, 2014
 - Annual count of homeless population in the San Diego County region
 - 1,500 volunteers and community leaders involved
 - Count enables the region to qualify for funding
 - 2014 count estimated 8,500 homeless
 - PITC 2014 report concluded 17% veterans, 26% suffer from severe mental illness, 19% are considered chronic substance abusers
- 2015 San Diego Regional Homeless Point-In-Time Count (PITC)
 - January 23, 2015
 - Results and data to be available by end of April 2015

2014 Regional PITC Summary

Estimates of Homelessness



	2013	2014	CHANGE
Total Homeless	8,879	8,506	-4%
Unsheltered	4,574	3,985	-13%
Sheltered	4,305	4,521	5%

Regional Breakdown of Homelessness in San Diego County 2014

San Diego County Regions	Sheltered Homeless Persons	Unsheltered Homeless Persons	Total	% by Region
City of San Diego	2731	2468	5199	61.1%
North County Inland	761	263	1024	12.0%
South County	187	666	853	10.0%
East County	416	378	794	9.3%
North County Coastal	426	210	636	7.5%
<i>San Diego County</i>	4521	3985	8506	100%

Estimates of Homelessness Regional Trends – San Diego County

	% Change 2013-14	% Change 2011-14
Unsheltered	-13%	-20%
Sheltered	5%	12%
Total Homeless	-4%	-6%

Estimates of Homelessness City of National City

	2012	2013	2014	2015
Unsheltered	143	128	266	Results Pending
Sheltered	18	29	18	Results Pending
Total Homeless	161	157	284	Results Pending
Total % with Cities & Unincorporated	1.6%	1.8%	3.4%	

City of National City

- Departments Involved
- City Homeless Committee
- Municipal Code
- City Encampment Policy
- Collaboration & Partnerships



February 2014 Homeless Encampment Fire

<https://www.youtube.com/watch?v=QArzYkI3uw0>



Fire & Medical Services

- 2013 – Fire / Medical responded and assisted with 68 incidents involving identified homeless persons.
 - Substance abuse, sick person, psychiatric problem, trauma, overdose, cardiac-chest pains, alcohol withdrawals, extremity pain, respiratory distress, abdominal pain, dizzy, diabetic problem, altered mental status, heat illness, seizure, medical evaluations for the Police Department
 - Age range 19 – 80 years of age
 - 85% Male gender patient
- 2014 – Fire / Medical responded and assisted with 76 incidents involving identified homeless persons (same types of calls as 2013).
 - Age range 27 – 73 years of age
 - 22% Female gender patients

Fire & Medical Services

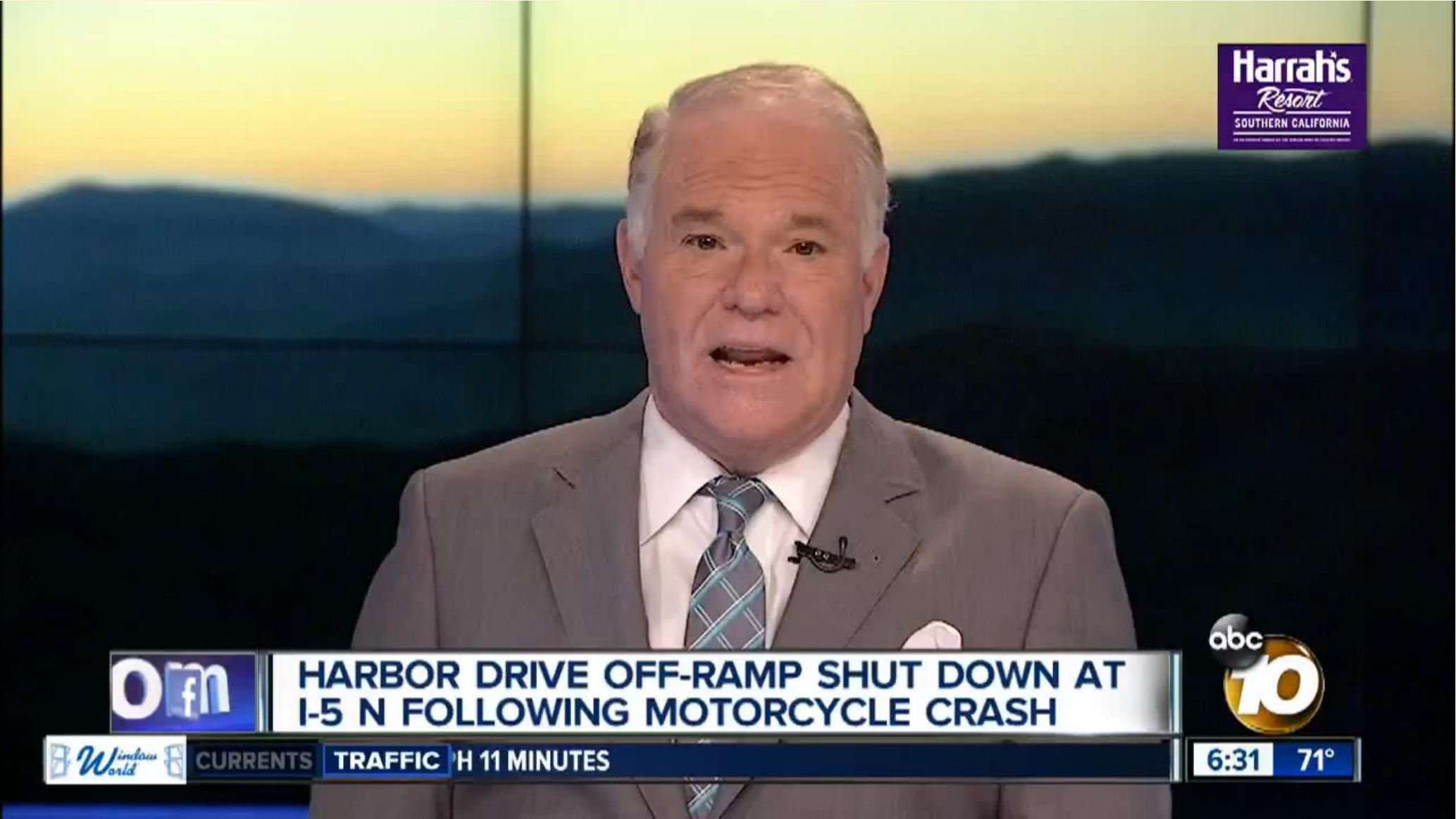
- 2014 – Fire responded to 11 vegetation / structure fires as a result of homeless encampments or activities.
- 2013 – Fire responded to 10 vegetation / structure fires as a result of homeless encampments or activities.

Fire Impacts and Hazards

- Chemicals, propane, vehicle batteries, hazardous waste
- Human waste, drug paraphernalia

Plaza Bonita Homeless Encampment Clean Up September 2014

<https://www.youtube.com/watch?v=oXzwluaJujo>



Police Services

Operation Jungle Book

- September 22, 2014, the National City Police Department, in conjunction with multiple other law enforcement agencies, conducted an operation in the river bed west of the Plaza Bonita Mall. The Sweetwater River Channel commonly referred to as “The Jungle.” Purpose to address the issues of trespassing.



Operation Jungle Book

- Area selected to reduce the criminal activity for the neighboring residential areas & Plaza Bonita Mall. Prior criminal investigations, including homicide, arson, assaults, theft, drug sales, drug usage, have been a drain on law enforcement and fire protection services.



Operation Jungle Book

National City Police Department and the City of National City offered services & resources.

The operation netted:

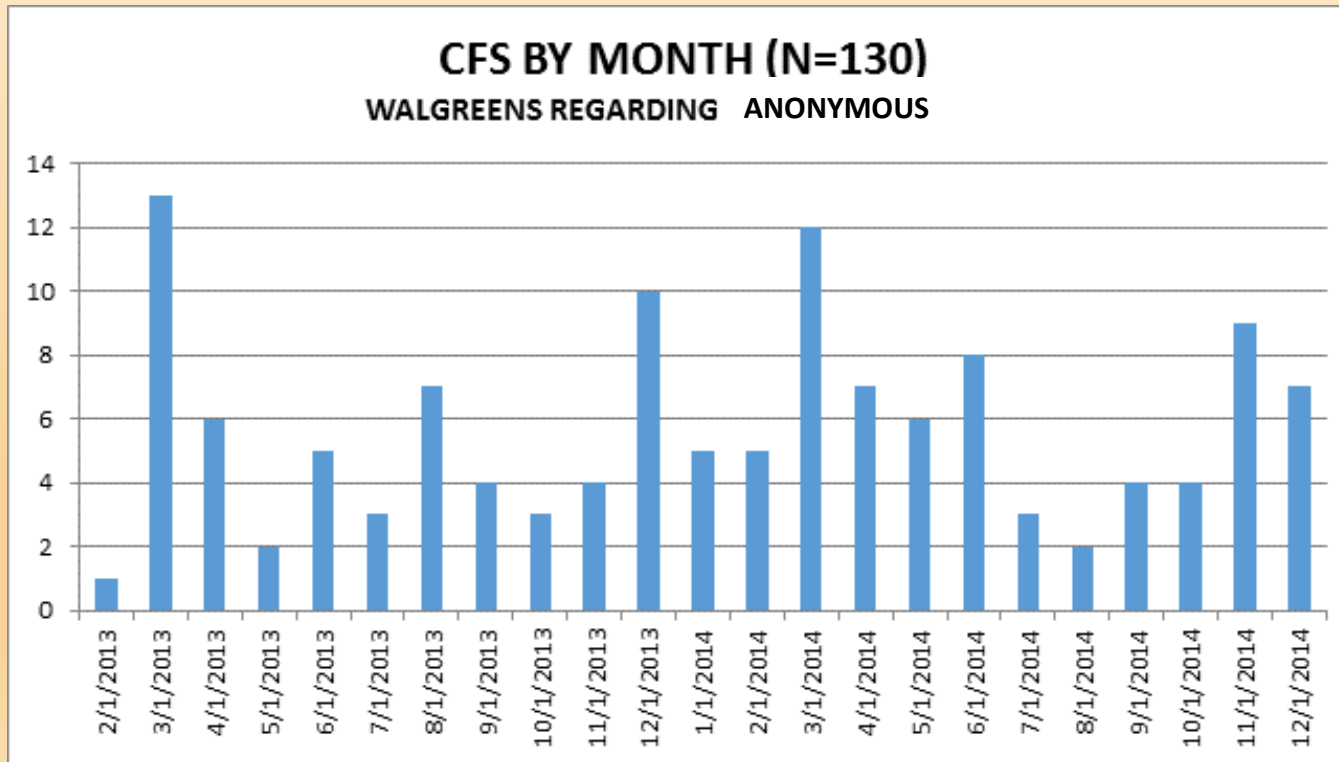
- 75 Field Interviews
- 13 Arrests
- ID Habitual Offenders

Hazmat areas were quarantined,
and Animal Control was on hand to
aid with any wildlife issues.



Case Study of Habitual Transient Issue

- Examination of 130 Calls for Service regarding ANONYMOUS at one commercial location between February 2013 – Dec 2014, NCPD officers have spent approximately **18.5 total hours** dealing with ANONYMOUS .
- Dispatchers' time spent on the calls was not calculated.
- The final dispositions of the calls breakdown as follows:



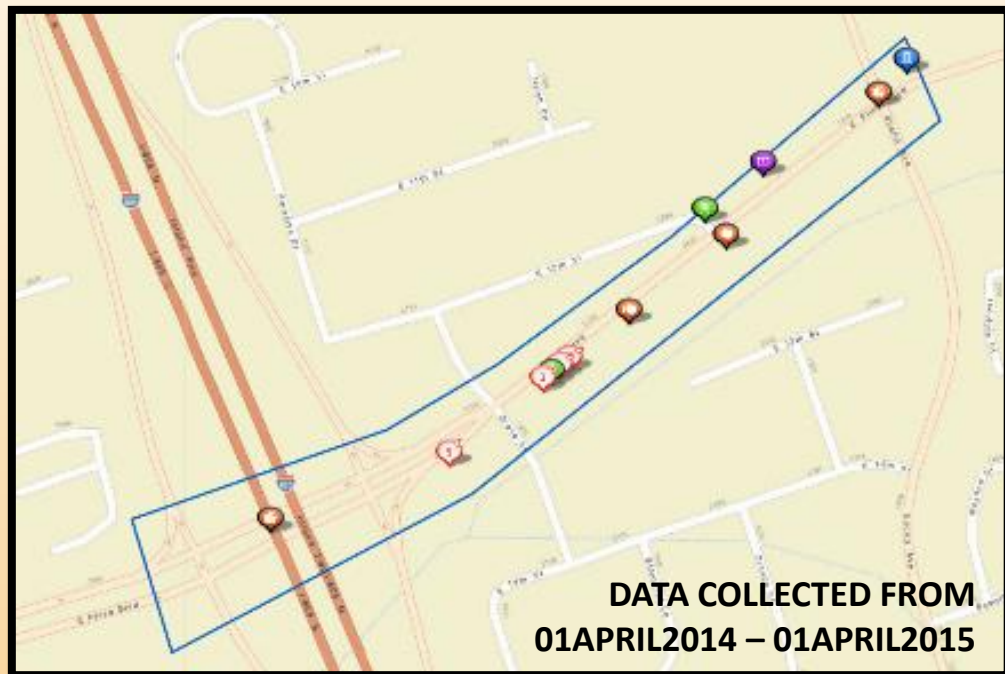
ADVISED	20
ADVISED; SENT ON WAY	1
ASSISTED	1
BEAT INFO	2
CHECKED OK	4
CITE & RELEASE	4
FIELD INTERVIEW	3
GONE ON ARRIVAL	25
NO CRIME	1
NO LONGER NEEDED	5
PENDING RECALL	1
REPORT TAKEN	2
SENT ON WAY	60
TRANSPORTED TO JAIL	1

Four calls resulted in case reports:

1301187
1304993
1306414
1404838

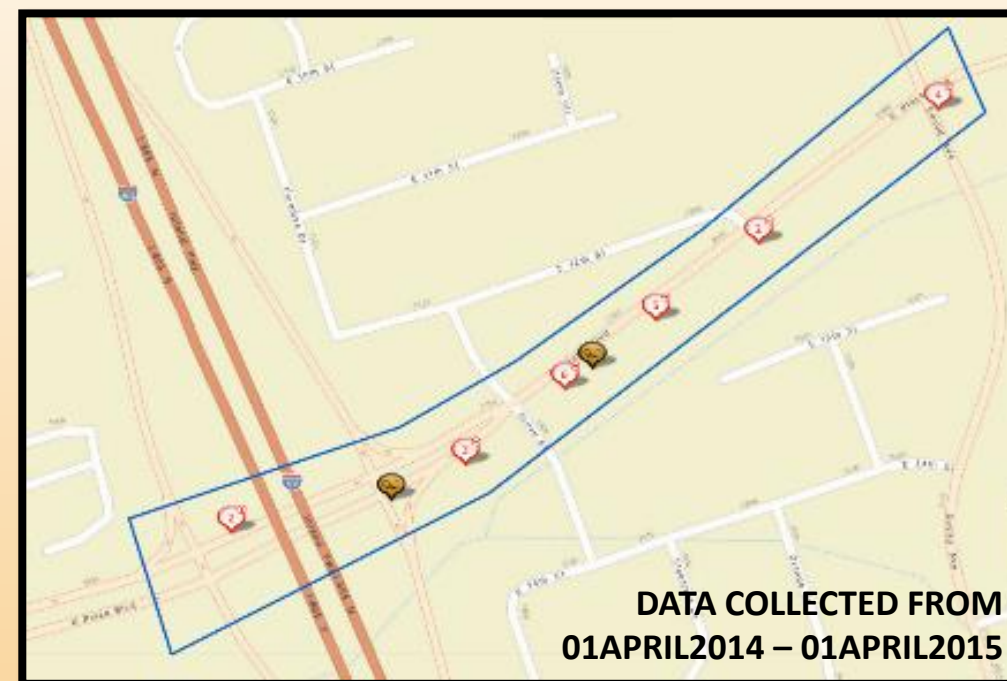
1800-2600 E PLAZA BLVD :: aka “The Tunnels”

CRIME CASES



AGGRAVATED ASSAULT	2
COMMERCIAL BURGLARY	2
LARCENY	10
FAMILY OFFENSE	1
FRAUD	1
MOTOR VEHICLE THEFT	1
SIMPLE ASSAULT	7
VANDALISM	1

ARRESTS



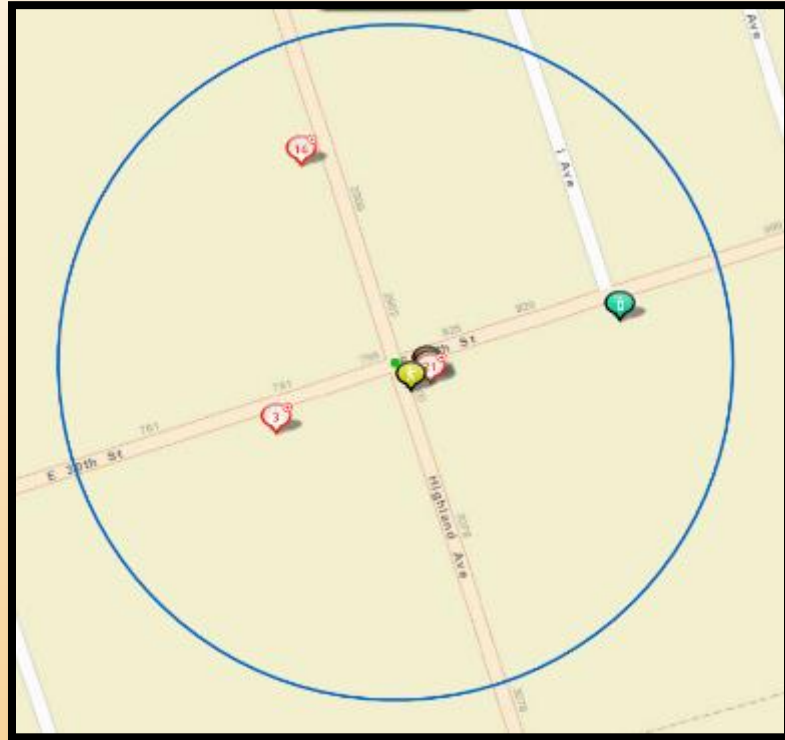
5150 – MENTALLY ILL	6
NARCOTICS	14
ASSAULT	1
DUI / DRUNK IN PUBLIC	3
FELONY WARRANT	5
ROBBERY	1

36 FIELD INTERVIEWS TAKEN IN THIS AREA SPECIFICALLY RELATED TO TRANSIENT ISSUES.

30TH & HIGHLAND

DATA COLLECTED FROM
01APRIL2014 – 01APRIL2015

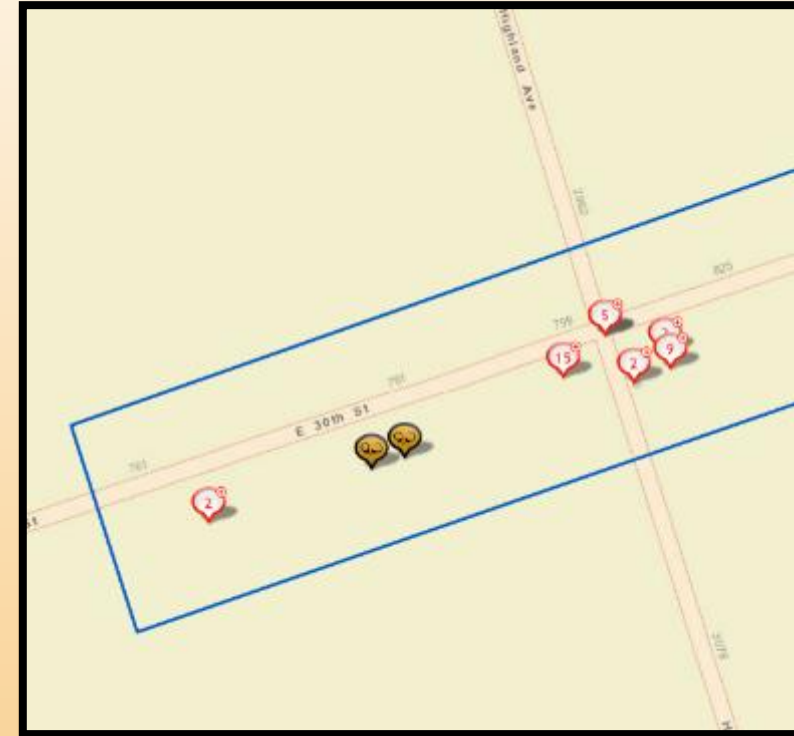
CRIME CASES



COMMERCIAL BURGLARY	8
LARCENY	16
MOTOR VEHICLE THEFT	4
ROBBERY	2
SIMPLE ASSAULT	7
VANDALISM	4
FAMILY OFFENSE	2

*16 cases occurred at High School

ARRESTS



BATTERY (DV)	2
DISORDERLY CONDUCT: ALCOHOL	2
5150: MENTALLY ILL	3
PETTY THEFT	1
WARRANT	1
UNDER INFLUENCE OF CONTROLLED SUBSTANCE	1

*27 of 39 arrests related to Vehicle or DUI charges

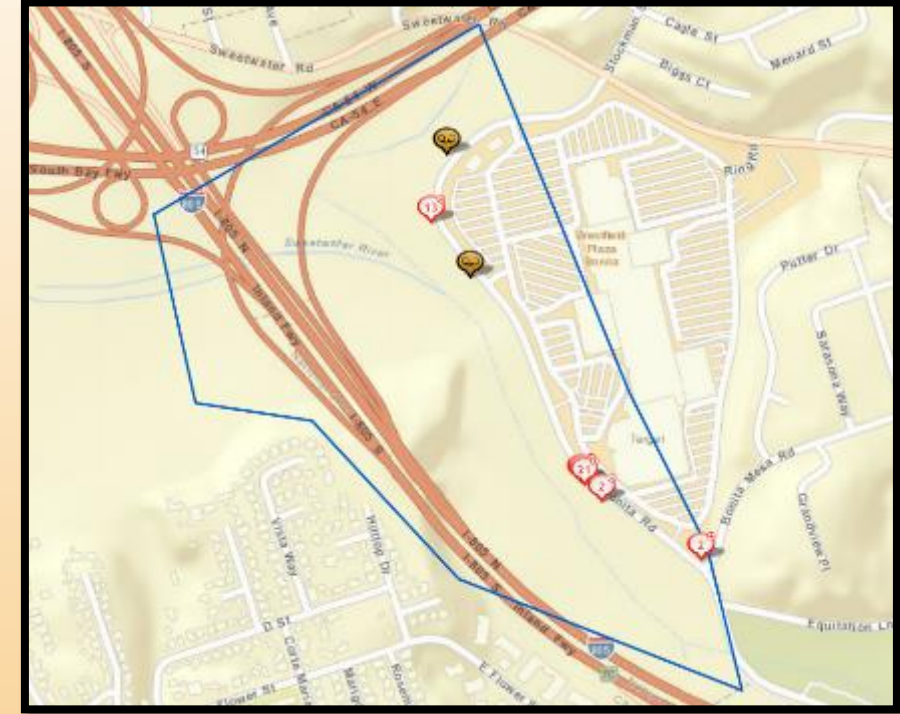
PLAZA BONITA MALL AREA :: The Riverbed

CRIME CASES



BURGLARY	14
LARCENY	211
ASSAULT	8
MOTOR VEHICLE THEFT	24
ROBBERY	8
NARCOTICS	7
FRAUD	4

ARRESTS



PETTY THEFT	133
BURGLARY	51
NARCOTICS	16
ROBBERY	7
LARCENY	7
ASSAULT	3
DRUNK IN PUBLIC	1
MENTALLY ILL	4
WARRANTS	7
MOTOR VEHICLE THEFT	2

****85 FIELD INTERVIEWS TAKEN IN THIS AREA SPECIFICALLY RELATED TO TRANSIENT ISSUES.****

Police - Calls for Service

April 2014 – April 2015

- Monday, Thursday, Fridays → High Volume
- Trespassing: 331
- Panhandling: 63
- Loitering: 66
- Field Interviews: 262*

Specifically Mentions Transient or Homeless in Narrative

Legal Overview

- Monitoring Case Law Decisions
- Constitutional Enforcement of Laws
 - E.g. Clean-up Projects
- Monitoring Legislative Developments
 - AB 5 - Homeless Person's Bill of Rights and Fairness Act
 - SB 608 - Right to Rest Act
 - AB 35 & 1335 – Building Homes and Jobs Act

Transitional Housing

Casa Nueva Vida – 31 4th Avenue, Chula Vista, CA

- Opened in 1993
- 13 unit short term and transitional housing available for residents of National City and Chula Vista – 1-2 bedroom shared units.
- Provides daycare with average stay of families of 90 days
- Average of 2.5 families from National City use transitional housing
- Term agreement is for 30 years starting in 1993

Transitional Housing – Confidential Location

- Opened in 2001
- 8 unit apartment complex (4/2 bdrm, 2/1bdrm, 1/3 bdrm)
- Assist homeless women with children who are domestic violence victims.
- Recommended maximum twenty-four month stay.
- Term agreement is for 30 years starting in 2001

CDBG & HOME Funded Activities

FY	Funding	Activity	Agency
1999	\$ 25,000	Transitional Housing Project	South Bay Community Services (SBCS)
2000	\$ 15,000	Community Food Bank	Community Food Bank of National City
2000	\$321,914	Transitional Housing Project	South Bay Community Services
2006	\$ 10,000	Community Food Bank	Highland Avenue Baptist Church
2008	\$ 2,881	Community Food Bank	Community Food Bank of National City
2009	\$10,000	Community Food Bank	Community Food Bank of National City
2010	\$ 41,203	Homeless Outreach Program and Enforcement	City of National City, Neighborhood Services
2011	\$ 95,000	Homeless Outreach Program and Enforcement	City of National City, Police and SBCS
2012	\$ 32,607	Homeless Assistance Program	City of National City, Neighborhood Services
2015	\$162,633	Tenant Based Rental Assistance	South Bay Community Services
2016	\$200,000	Tenant Based Rental Assistance	South Bay Community Services
Total	\$916,238		

Encampments & Clean-Ups

- Public Works & Parks

- 2013

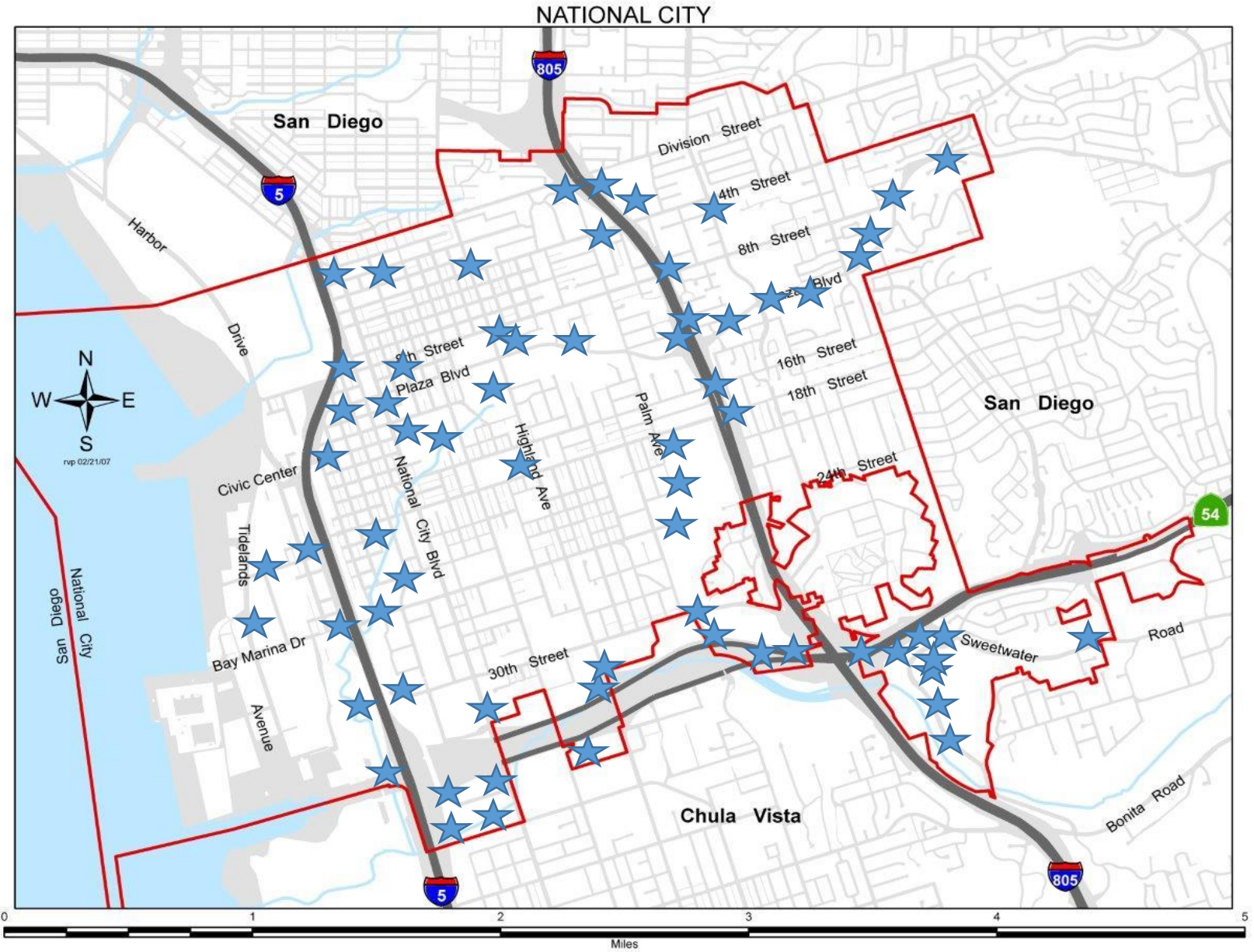
- 47 encampment clean-ups completed
 - 325 yards of trash collected
 - 308 hours of PW & Parks staff

- 2014

- 66 encampment clean-ups completed
 - 520 yards of trash collected
 - 430 hours of PW & Parks staff

- **Estimated cost impacts on PW / Park and Code Enforcement staff hours for addressing homeless encampments: \$ 25,000 FY13-14**

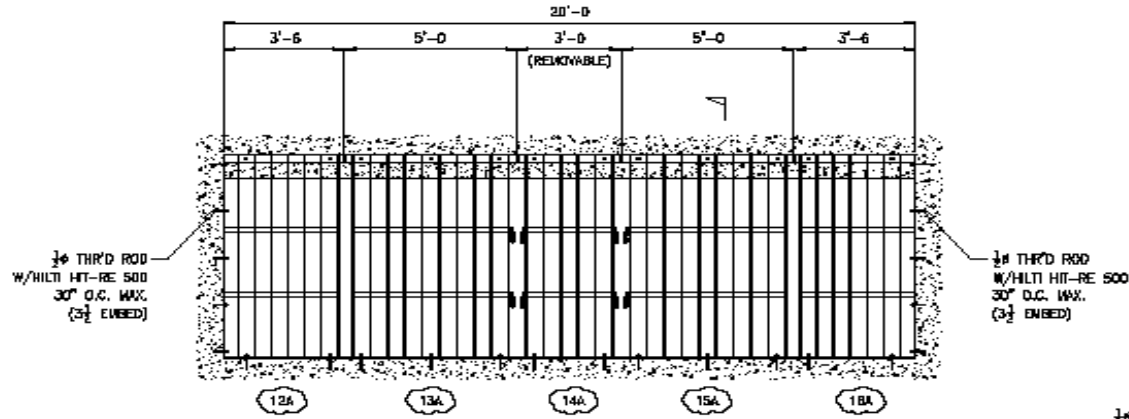
City Map Overview of Homeless Encampments in 2014



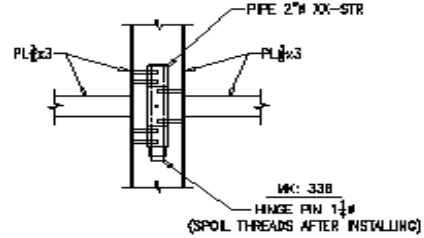
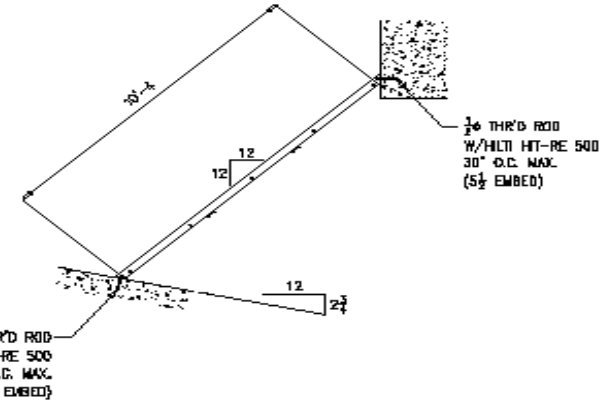
Current Projects

- Culvert / Storm Grate Barrier Installation Project
 - 2014 City Manager directed staff to research / implement
 - Contract Approved January 2015
 - Onsite Work to started April 2015
 - Projected Completion date for all six locations June, 2015
- Benefits
 - Public Health and Safety
 - Storm Water compliance
 - U.S. Environmental Protection Agency
 - State and Federal Clean Water Acts
 - Safety and welfare of emergency and City staff
 - Minimize calls for service and department impacts

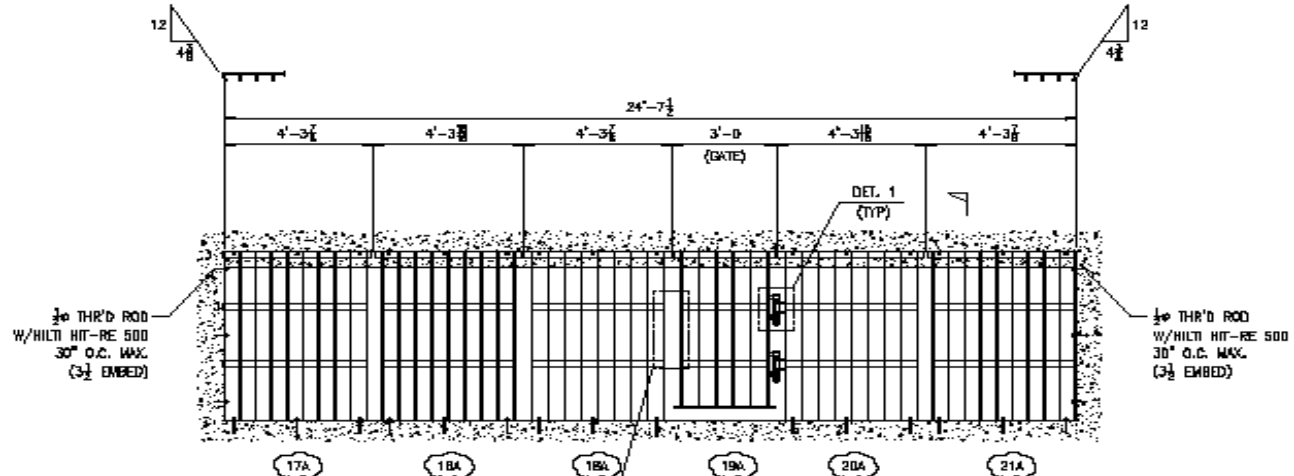
New Culvert / Storm Grate Drawing



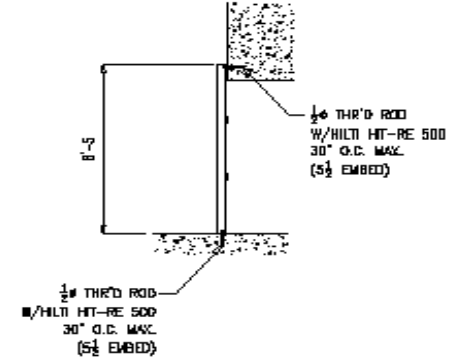
INLET #2



DET. "1"



OUTLET #2



REV.	DESCRIPTION	DATE
1	ISSUED FOR APPROVAL	3-6-15
2	ISSUED FOR FIELD USE	3-18-15

TRI STATE STEEL INC
 LAS VEGAS, NEVADA (714) 632-4323
 CITY OF NATIONAL CITY CULVERT GRATES
 NATIONAL CITY, CA

ARCHITECT: -
 CONTRACTOR: -
 ENGINEER: NATIONAL CITY ENGINEERING

DRAWN BY: YS
 CHK'D BY: ALO

PLAN & SECTION	
A & E GROSS REFERENCE	DWG NO.
-	E2

Location Map of Culvert Barrier Project Six Installations

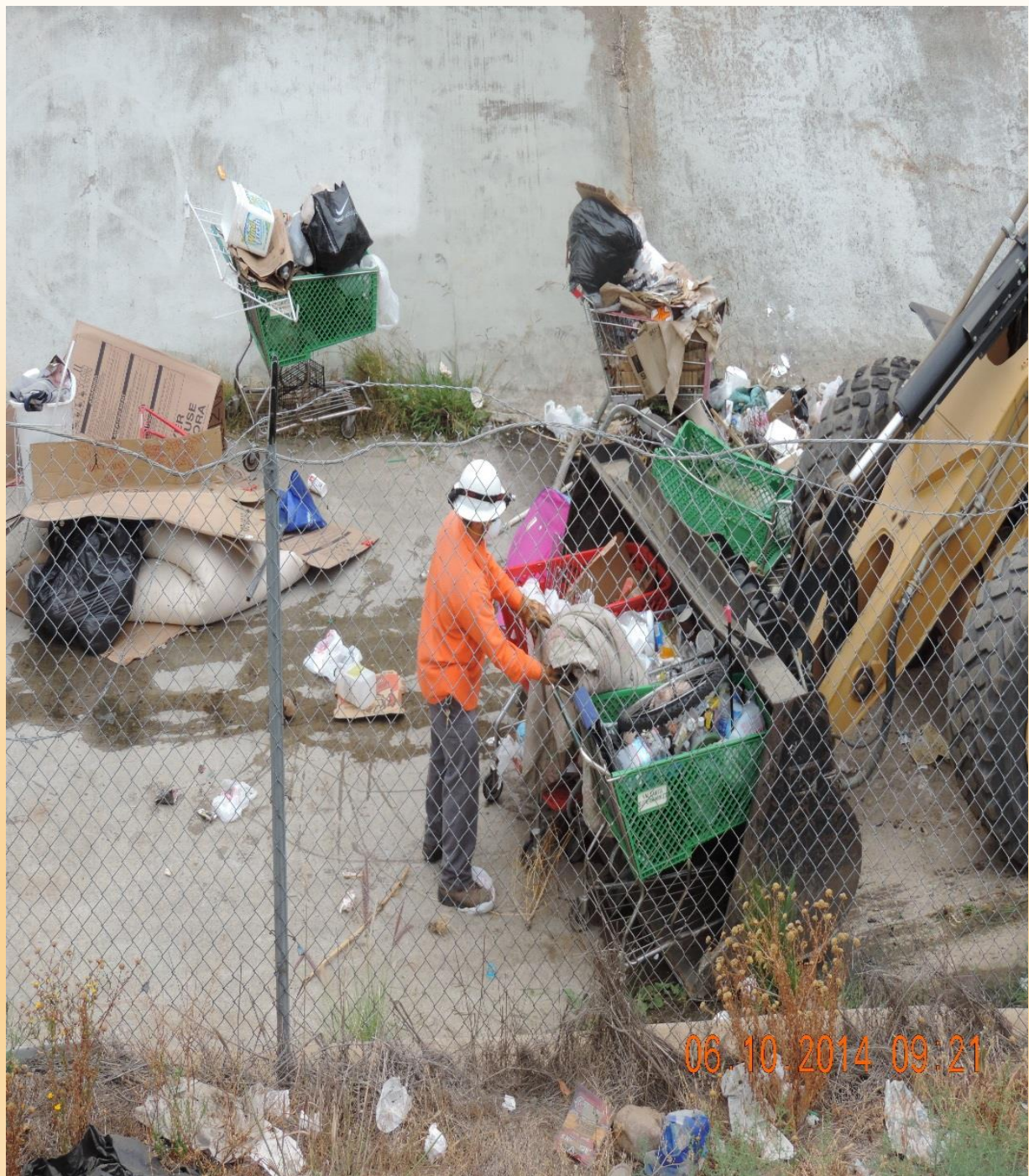


Culvert Encampment Clean-ups



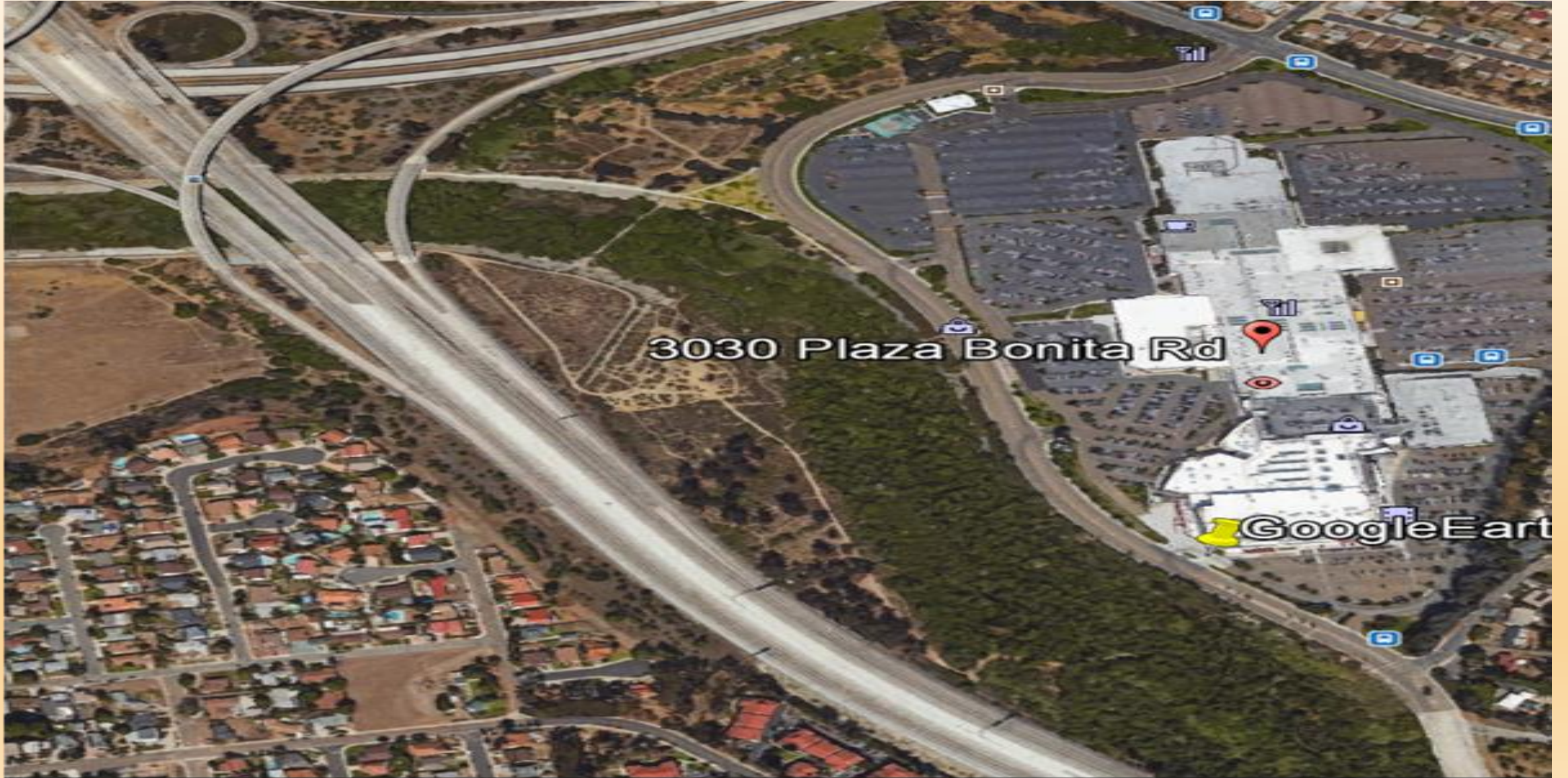








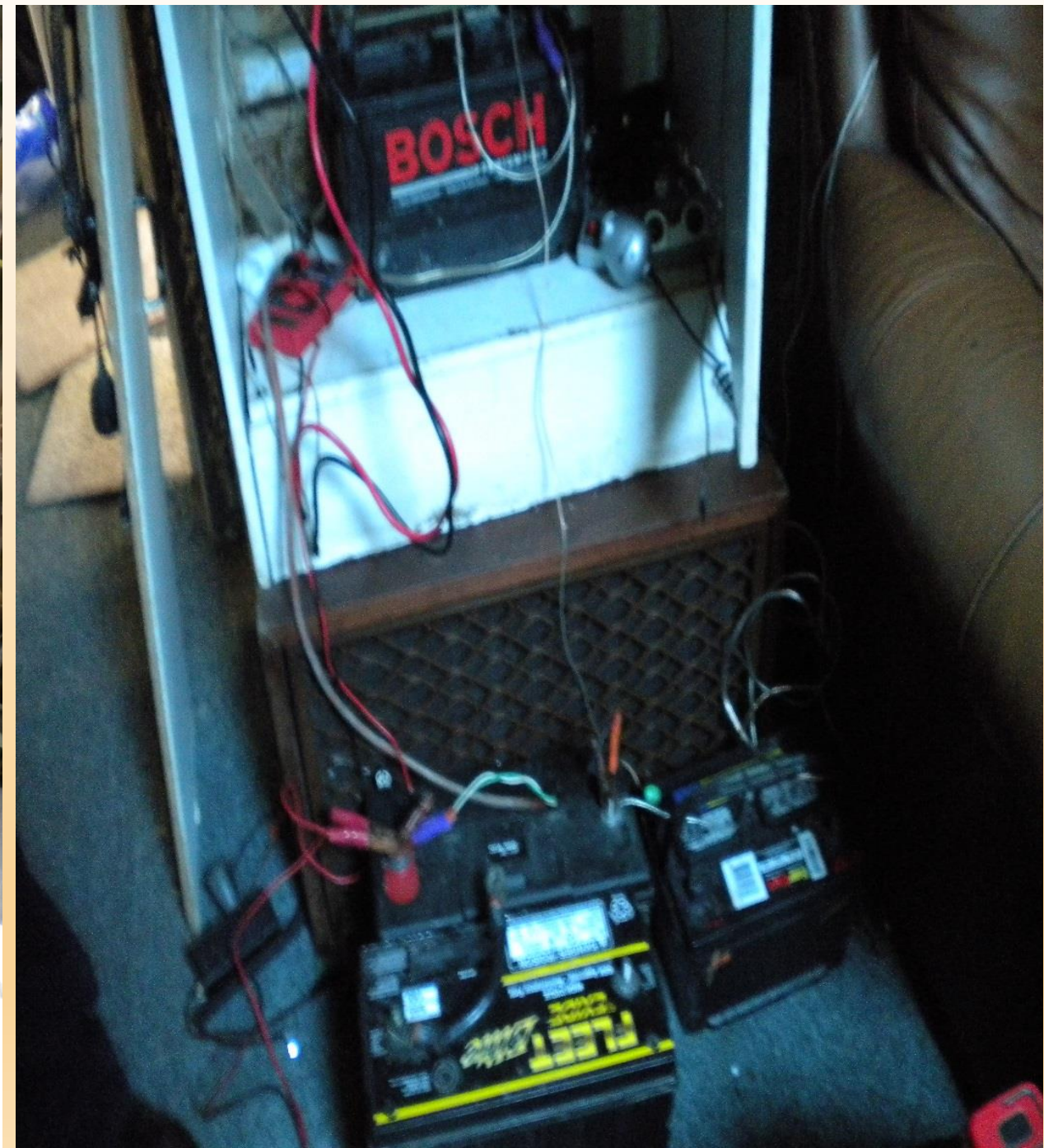
Plaza Bonita - Sweetwater Riverbed



https://www.youtube.com/watch?v=6R2BS_1B7uI

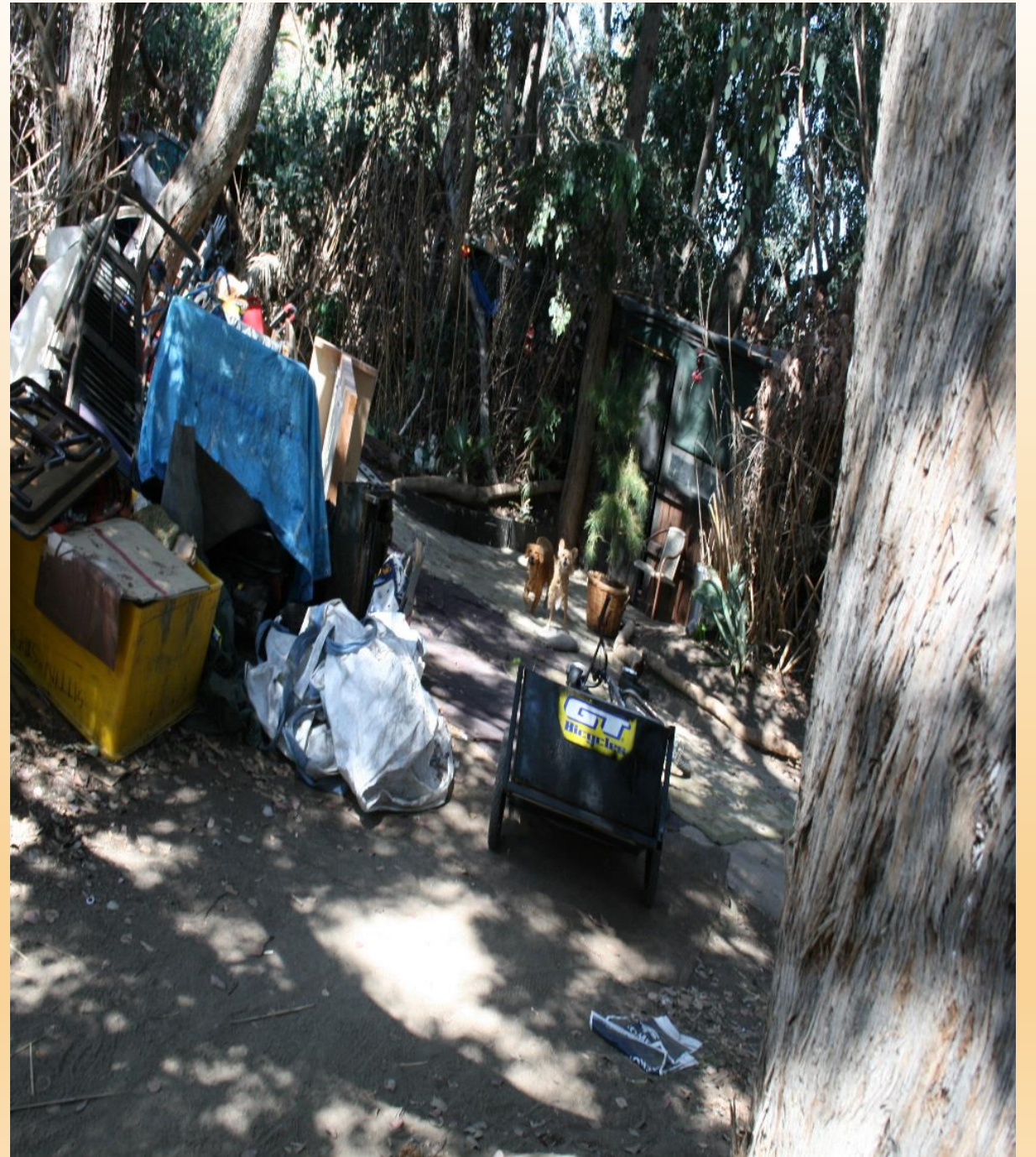






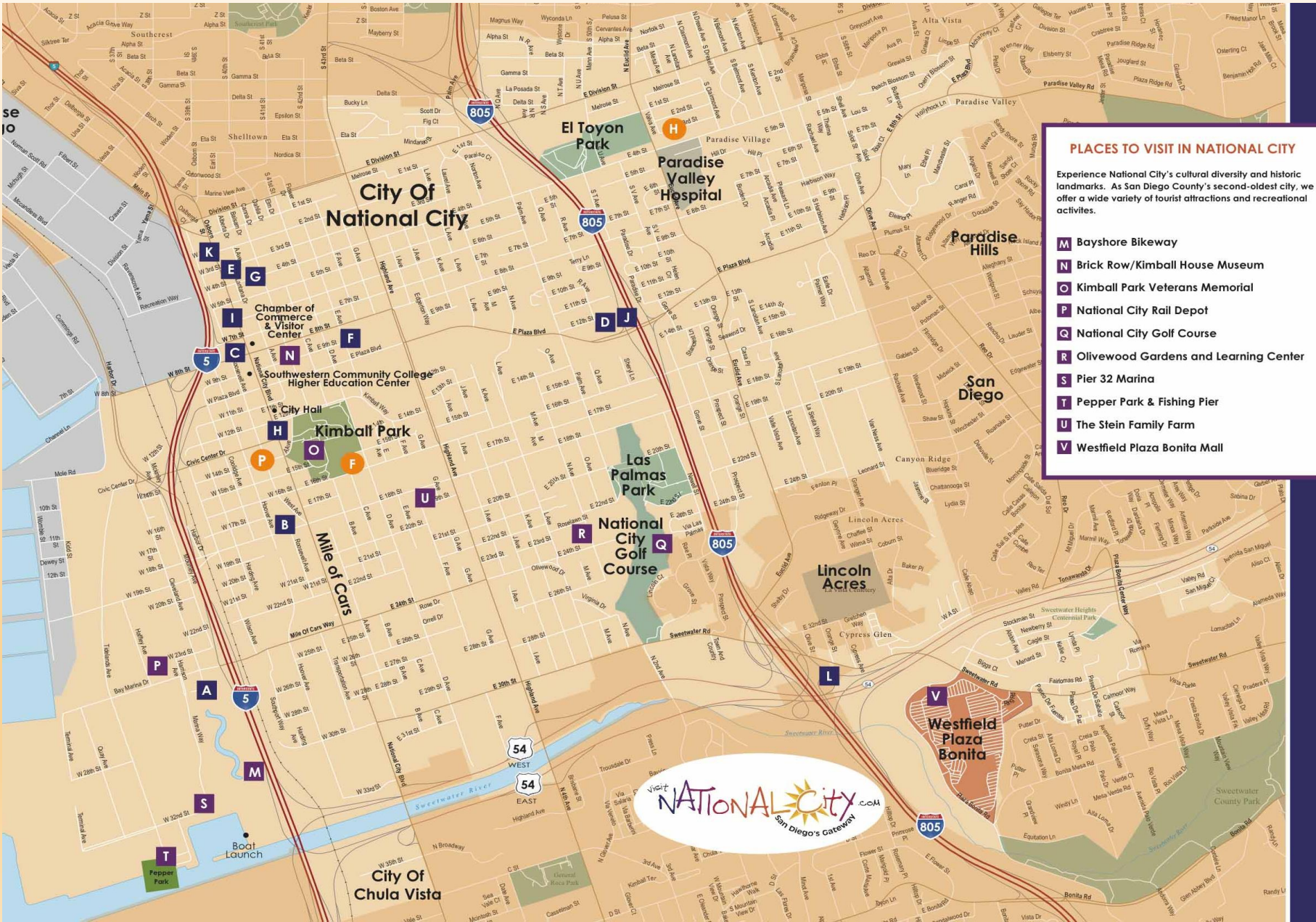






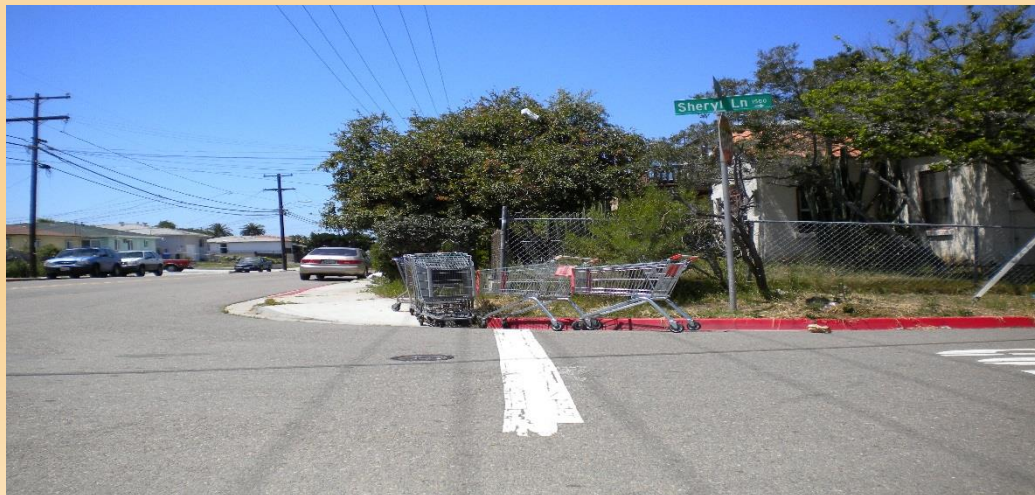


National City – Encampments on Streets, Public & Private Property



Shopping Cart & Recycling Impacts

- September 2014-April 2015
- 133 Shopping cart cases



- Municipal Code Chapter 7.34
- Requires cart containment system
- Cart removal warnings
- Cart removal prevention employee training



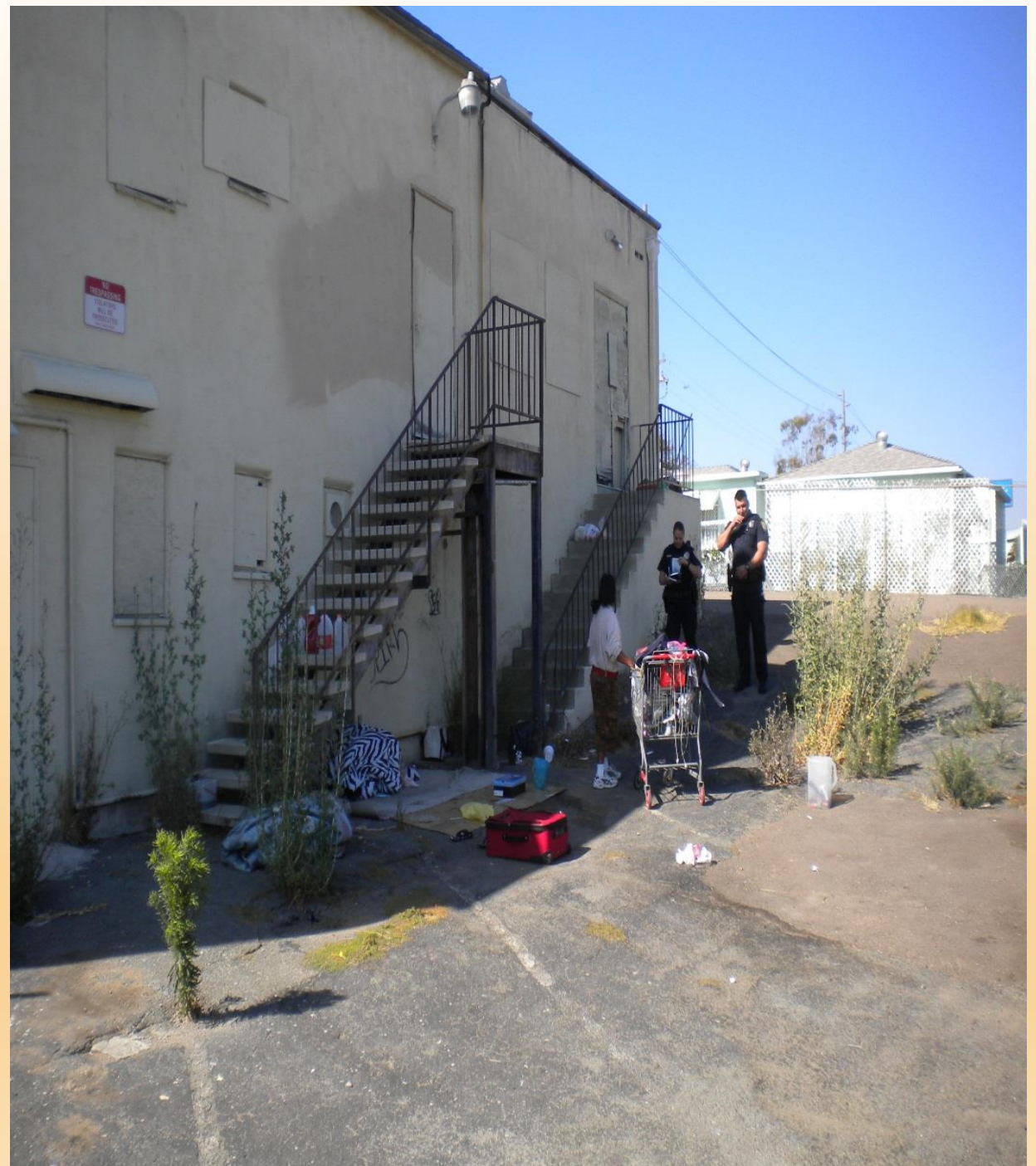


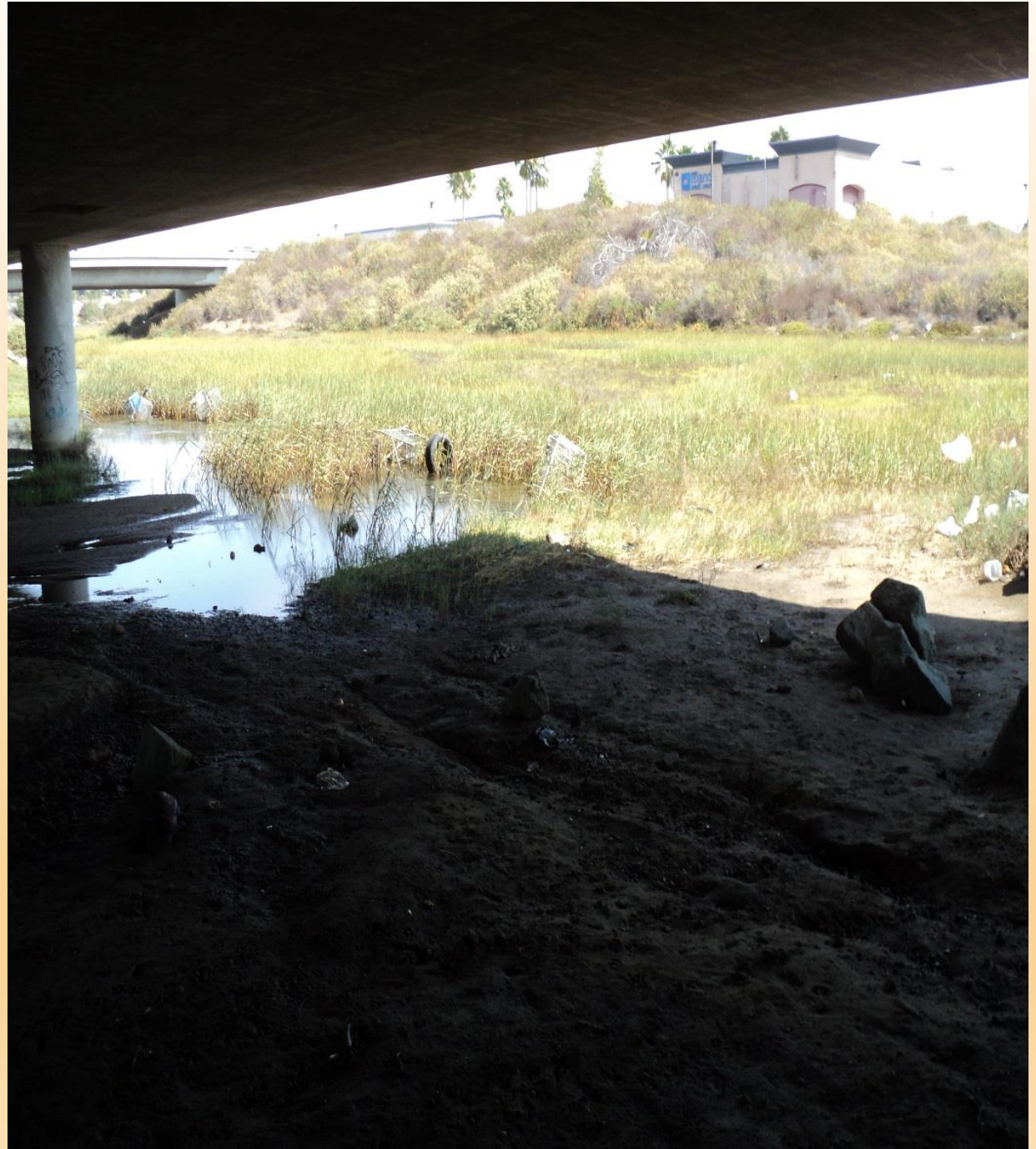
















SDSU



THE
sage
PROJECT

Professor Dr. Kristen Hill Maher

Associate Professor of Political Science

Introduction to Public Policy Analysis

Political Science 603

San Diego State University

- Class Project & Student Research

SDSU



- Student Presentations
 - Lori Jones
 - Aline Scherrer
- Final Class Overview
 - Dr. Kristen Hill Maher

Staff Recommendations

- Pilot Program with Alpha Project
 - Program would provide the following services
 - Homeless Outreach
 - Mental health assessments
 - Hygiene items, blankets, etc.
 - Transportation provided to access services
 - Referrals, shelters & housing (when available)
 - Access to all Alpha Project Programs
 - Detailed reporting – location, demographics, mental health assessment results, placement rates, referrals and resources given
 - Encampment clean-up services
 - Estimated cost for 6-month pilot approximately \$50,000

Staff Recommendations – cont.

- Continue working with Housing & Grants Department to research programs and any available grant funding
- Enhance and continue involvement with community partners and organizations involved with homelessness
 - (RTFH) Regional Task Force on the Homeless
 - South Bay Homeless Coalition
 - Local Faith Based Organizations

Public Comments

Council Questions & Direction